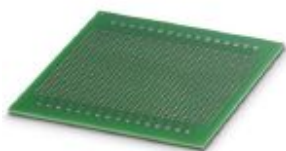


PCB - UM-BASIC 108/32 DEV-PCB - 2202551

Please be informed that the data shown in this PDF Document is generated from our Online Catalog. Please find the complete data in the user's documentation. Our General Terms of Use for Downloads are valid (<http://phoenixcontact.com/download>)

Perfboard for the UM-BASIC 108 DEV-KIT; for SMKDS-terminal blocks; ideal for manual soldering




Your advantages

- Hole matrix PCB for self-assembly
- Assembly area: approx. 10,700 mm²
- Hole matrix dimension: 2.54 mm



Key Commercial Data

Packing unit	1 pc
GTIN	 4 055626 142661
GTIN	4055626142661

Technical data

Product properties

Brief article description	PCB
Type	UM-BASIC 108/32 DEV-PCB
Order No.	2202551
Housing type	Press-drawn section housings

Material specifications

Housing material	FR 4-21
Color (RAL)	green

Ambient conditions

Ambient temperature (operation)	110 °C
---------------------------------	--------

General information

Type of note	Assembly instruction:
Note	Refer to the data sheet for the range in the download area.

PCB - UM-BASIC 108/32 DEV-PCB - 2202551

Technical data

Packaging specifications

Pieces per package	1
Denomination packing units	Pcs.

Environmental Product Compliance

China RoHS	Environmentally friendly use period: unlimited = EFUP-e
	No hazardous substances above threshold values

Classifications

eCl@ss

eCl@ss 10.0.1	27182701
eCl@ss 5.0	27379200
eCl@ss 5.1	27379200
eCl@ss 7.0	27182701
eCl@ss 8.0	27182702
eCl@ss 9.0	27260690

ETIM

ETIM 4.0	EC002498
ETIM 5.0	EC002779
ETIM 6.0	EC002779
ETIM 7.0	EC002779

UNSPSC

UNSPSC 13.2	31261501
UNSPSC 18.0	31261501
UNSPSC 19.0	31261501
UNSPSC 20.0	31261501
UNSPSC 21.0	31261501

Approvals

Approvals

Approvals

EAC

Ex Approvals

Approval details

PCB - UM-BASIC 108/32 DEV-PCB - 2202551

Approvals

EAC



B.01742

Accessories

Additional products

Electronic housing - UM-BASIC 108 100MM DEV-KIT KMGY - 2202528

DEV-KIT UM-BASIC: contains 1 x UM-BASIC 100MM profile housing and PCB terminal blocks (SMKDS), supplied in individual parts



Phoenix Contact 2020 © - all rights reserved
<http://www.phoenixcontact.com>

PHOENIX CONTACT GmbH & Co. KG
Flachsmarktstr. 8
32825 Blomberg
Germany
Tel. +49 5235 300
Fax +49 5235 3 41200
<http://www.phoenixcontact.com>

X-ON Electronics

Largest Supplier of Electrical and Electronic Components

Click to view similar products for [Enclosures, Boxes & Cases](#) *category:*

Click to view products by [Phoenix Contact](#) *manufacturer:*

Other Similar products are found below :

[585-R-WH-PK](#) [M-10-PLATED](#) [60221-01](#) [60566-01-000](#) [HPL-9VB BATT DOOR](#) [M18-PLTD](#) [M-21-PLATED](#) [63310-01-000](#) [6711GSKT](#)
[71884-29-028](#) [LH45-100 Black](#) [72868-510-000](#) [CNS-0000 Black](#) [72883-510-000](#) [CNS-0101 Black](#) [72906-510-000](#) [CNS-0407 Black](#) [73092-](#)
[510-000](#) [CNM-0101 Black](#) [73105-510-000](#) [CNL-0101 Black](#) [73108-510-000](#) [CNL-0303 Black](#) [73395-510-039](#) [CNS-0006 Bone](#) [74257-510-000](#)
[CNL-0004](#) [MDC-1183-PLAIN-ALUM](#) [MDC-1183-PTD](#) [MDC-13104-PTD](#) [MDC-321-PTD](#) [MDC-973-PTD](#) [76](#) [77153-01-028](#) [FLX6030](#)
[83535-01-508](#) [90026-501-000](#) [PS36-200](#) [116-508](#) [120-407](#) [120-910](#) [127-908](#) [130-008](#) [1301170079](#) [1322GSKTEP](#) [1325GSKT3](#) [1434-1210](#)
[EAS-500 \(BLACK ANO\)](#) [1804RP-RB-PK](#) [190-005](#) [2202307](#) [KAB3321 BLACK](#) [KAB3421](#) [2697466](#) [S52213](#) [2901123](#) [2901699](#) [A0645271](#)
[A20P20](#) [2106-IR](#) [PERF-850-PLN](#)