

# Surge protection device - MT-RS485-TTL - 2749398


Please be informed that the data shown in this PDF Document is generated from our Online Catalog. Please find the complete data in the user's documentation. Our General Terms of Use for Downloads are valid (<http://phoenixcontact.com/download>)



Rail-mountable module with surge voltage coarse and fine protection for RS-485 interface, with TTL level, for mounting on NS 35/7.5, housing width: 50 mm



## Key Commercial Data

Packing unit	5 pc
GTIN	 4 017918 104962
GTIN	4017918104962

## Technical data

### Dimensions

Height	77.5 mm
Width	47.6 mm
Depth	54.9 mm

### Ambient conditions

Ambient temperature (operation)	-40 °C ... 80 °C
Degree of protection	IP20

### General

Color	black
Mounting type	DIN rail: 35 mm
Type	DIN rail module, one-piece
Direction of action	Line-Line & Line-Signal Ground/Shield & Signal Ground/Shield-Earth Ground

### Protective circuit

IEC test classification	C2
	C3
	D1
VDE requirement class	C2

## Surge protection device - MT-RS485-TTL - 2749398

### Technical data

#### Protective circuit

	C3
	D1
Nominal voltage $U_N$	5 V DC
Maximum continuous voltage $U_C$	5.8 V DC
Rated current	450 mA (25 °C)
Operating effective current $I_C$ at $U_C$	≤ 2 mA
Nominal discharge current $I_n$ (8/20) μs (line-line)	10 kA
Nominal discharge current $I_n$ (8/20) μs (line-earth)	10 kA
Max. discharge current $I_{max}$ (8/20) μs maximum (line-line)	10 kA
Max. discharge current $I_{max}$ (8/20) μs maximum (line-earth)	10 kA
Max. discharge current $I_{max}$ (8/20) μs maximum (line-signalground)	10 kA
Output voltage limitation at 1 kV/μs (line-line) spike	≤ 9 V
Output voltage limitation at 1 kV/μs (line-earth) spike	≤ 450 V
Output voltage limitation at 1 kV/μs (line-line) static	≤ 9 V
Output voltage limitation at 1 kV/μs (line-earth) static	≤ 450 V
Output voltage limitation at 1 kV/μs (line-signalground) static	≤ 9 V
Residual voltage at $I_n$ (line-line)	≤ 9 V
Residual voltage at $I_n$ (line-signalground)	≤ 9 V
Voltage protection level $U_p$ (line-line)	≤ 9 V
Voltage protection level $U_p$ (line-earth)	≤ 450 V
Voltage protection level $U_p$ (line-signalground)	≤ 9 V
Response time $t_A$ (line-line)	1 ns
Response time $t_A$ (line-signalground)	≤ 1 ns
Response time $t_A$ (line-earth)	≤ 100 ns
Input attenuation aE, sym.	typ. 0.1 dB (up to 40 kHz 150 Ω system)
	typ. 0.1 dB (up to 10 kHz)
Input attenuation aE, asym.	0.5 dB (up to 0.1 MHz 50 Ω system)
	0.1 dB (up to 10 kHz 600 Ω system)
Cut-off frequency $f_g$ (3 dB), asym. (GND) in 50 Ohm system	600 kHz
Cut-off frequency $f_g$ (3 dB), asym. (GND) in 150 Ohm system	200 kHz
Cut-off frequency $f_g$ (3 dB), asym. (GND) in 600 Ohm system	50 kHz
Resistance per path	4.4 Ω
Surge protection fault message	none

#### Connection data

Connection method	Screw connection
Connection method IN	Screw terminal blocks
Connection method OUT	Screw terminal blocks
Screw thread	M3
Stripping length	8 mm

# Surge protection device - MT-RS485-TTL - 2749398

## Technical data

### Connection data

Conductor cross section flexible	0.2 mm <sup>2</sup> ... 2.5 mm <sup>2</sup>
Conductor cross section solid	0.2 mm <sup>2</sup> ... 4 mm <sup>2</sup>
Conductor cross section AWG	24 ... 12

### Standards and Regulations

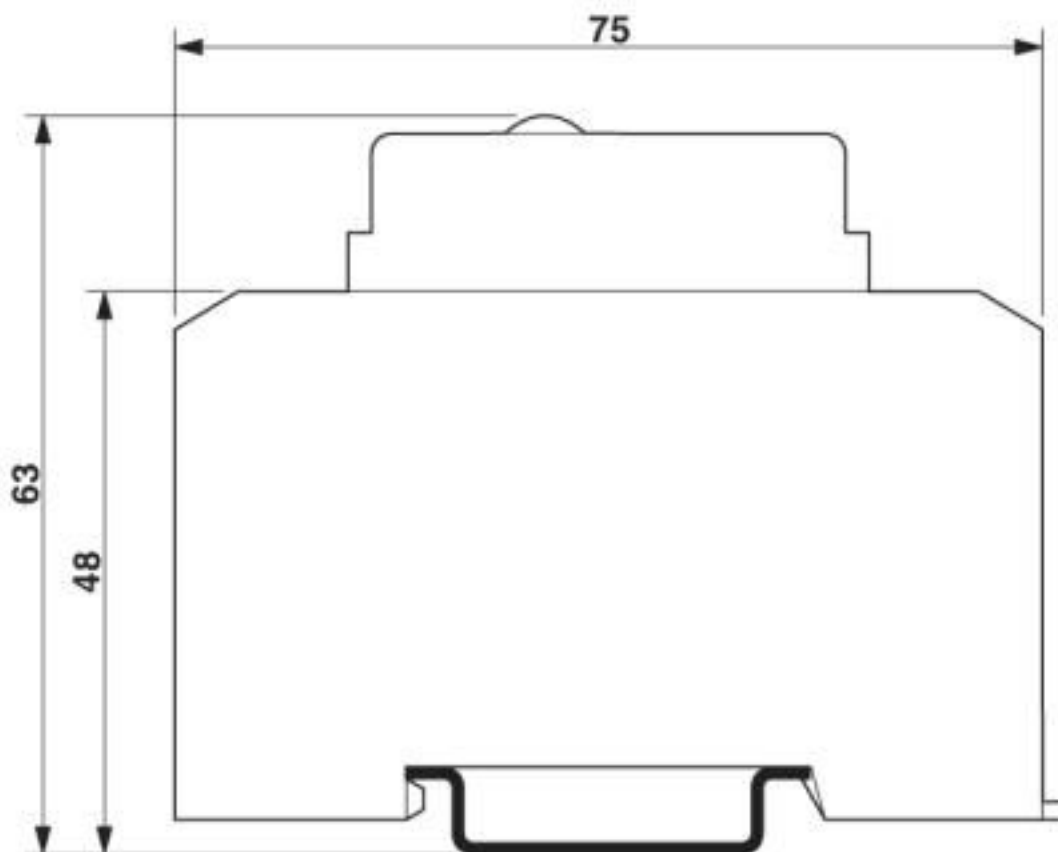
Standards/regulations	Draft IEC 64644-1
	E VDE 0845-3-1

### Environmental Product Compliance

REACH SVHC	Lead 7439-92-1
China RoHS	Environmentally Friendly Use Period = 50 years
	For details about hazardous substances go to tab "Downloads", Category "Manufacturer's declaration"

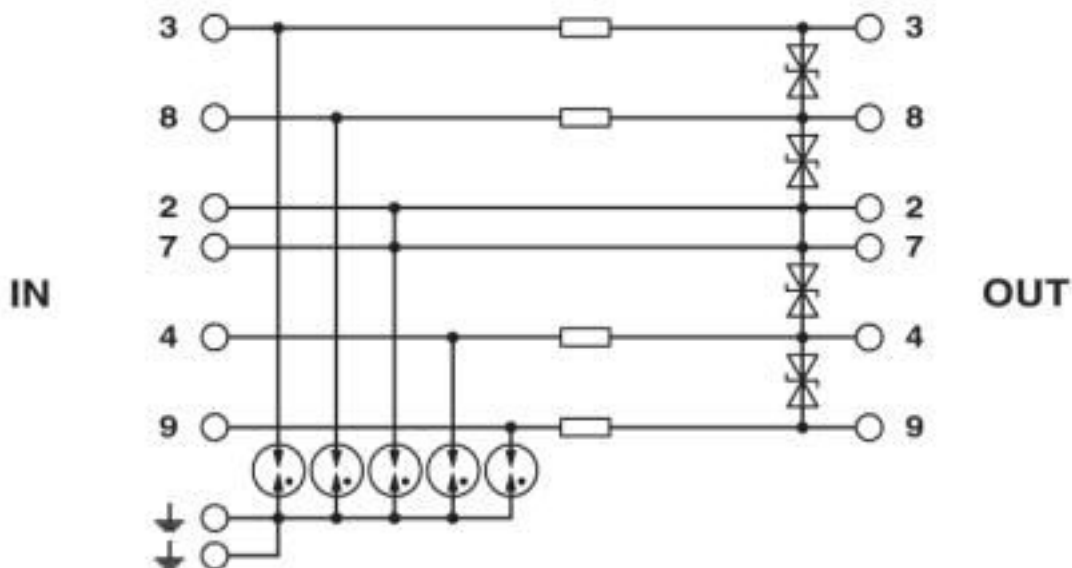
## Drawings

Dimensional drawing



# Surge protection device - MT-RS485-TTL - 2749398

Circuit diagram



## Classifications

### eCl@ss

eCl@ss 10.0.1	27130807
eCl@ss 4.0	27130800
eCl@ss 4.1	27130800
eCl@ss 5.0	27130800
eCl@ss 5.1	27130800
eCl@ss 6.0	27130800
eCl@ss 7.0	27130807
eCl@ss 8.0	27130807
eCl@ss 9.0	27130807

### ETIM

ETIM 2.0	EC000943
ETIM 3.0	EC000943
ETIM 4.0	EC000943
ETIM 5.0	EC000943
ETIM 6.0	EC000943
ETIM 7.0	EC000943

### UNSPSC

UNSPSC 6.01	30212010
UNSPSC 7.0901	39121610
UNSPSC 11	39121610
UNSPSC 12.01	39121610
UNSPSC 13.2	39121620

# Surge protection device - MT-RS485-TTL - 2749398

## Classifications

### UNSPSC

UNSPSC 18.0	39121620
UNSPSC 19.0	39121620
UNSPSC 20.0	39121620
UNSPSC 21.0	39121620

## Approvals

### Approvals

Approvals

EAC / EAC

Ex Approvals

### Approval details

EAC		EAC-Zulassung
-----	--	---------------

EAC		RU C- DE.*09.B.00169
-----	--	-------------------------

## Accessories

### Additional products

Shield connection - SSA 3-6 - 2839295



Shield fast connection for 3 ... 6 mm cable diameter. Potential connecting cable: 200 mm, 1 mm<sup>2</sup>, color: black

Shield connection - SSA 5-10 - 2839512



Shield fast connection for 5 ... 10 mm cable diameter. Potential connecting cable: 200 mm, 1 mm<sup>2</sup>, color: black

## Surge protection device - MT-RS485-TTL - 2749398

### Accessories

---

---

Phoenix Contact 2020 © - all rights reserved  
<http://www.phoenixcontact.com>

PHOENIX CONTACT GmbH & Co. KG  
Flachsmarktstr. 8  
32825 Blomberg  
Germany  
Tel. +49 5235 300  
Fax +49 5235 3 41200  
<http://www.phoenixcontact.com>

## X-ON Electronics

Largest Supplier of Electrical and Electronic Components

*Click to view similar products for [Surge Suppressors](#) category:*

*Click to view products by [Phoenix Contact](#) manufacturer:*

Other Similar products are found below :

[GUS1](#) [GUS12](#) [BSPM1A600D600LVR](#) [2800521](#) [29-2053](#) [GUS11](#) [GUS2](#) [GUS3](#) [GUS4](#) [30460](#) [SRA64C060X](#) [PC642C015](#) [1810-15-A3](#)  
[2713175](#) [4B06B-EC1-150LF](#) [SRA6LC](#) [BPMA75D100LV](#) [CX06M](#) [CCTV1](#) [GUS13](#) [GUS14](#) [GUS5](#) [GUS6](#) [VAL-MS 320/3+0-FM](#) [VAL-US-](#)  
[120/40/1+1-FM](#) [VAL-US-120/65/1+1-FM](#) [VAL-US-480D/30/3+0-FM](#) [VAL-US-120/40/1+0-FM](#) [STCHSP121BT1RU](#) [LP-BFDN-CW](#) [LP-](#)  
[STRL-NFF](#) [LP-STRL-DFE](#) [GUS22](#) [0804111](#) [5053609](#) [5053201](#) [SPD2-150-1P0](#) [SPD2-550-1P0](#) [6720005416](#) [6720005417](#) [1-2191595-2](#)  
[STC-CAT6-P0E-I](#) [SPD2-350-1P0](#) [FLT-CP-350-ST](#) [TTC-6P-3-HF-F-M-12DC-UT-I](#) [SMTPA200](#) [2800989](#) [2906776](#) [2906810](#) [2906847](#)