

Type 3 surge protection device - BT-1S-230AC/O - 2800625

Please be informed that the data shown in this PDF Document is generated from our Online Catalog. Please find the complete data in the user's documentation. Our General Terms of Use for Downloads are valid (<http://phoenixcontact.com/download>)




Type 3 arresters for universal installation in installation boxes, sill-type trunking, underfloor installations or direct installation in the termination device. Circuit with thermal monitoring and visual fault warning. Installation in branch or through wiring. Version: 230 V AC

Your advantages

- With double spring-cage terminal blocks for tool-free conductor connection
- Optical/audible signaling of disconnection
- Side latches for easy fixing

Key Commercial Data

Packing unit	1 pc
GTIN	 4 046356 620437
GTIN	4046356620437

Technical data

Dimensions

Height	43 mm
Width	22.5 mm
Depth	27.4 mm

Ambient conditions

Degree of protection	IP20
Ambient temperature (operation)	-30 °C ... 75 °C
Ambient temperature (storage/transport)	-30 °C ... 75 °C
Altitude	≤ 2000 m (amsl (above mean sea level))
Permissible humidity (operation)	5 % ... 95 %

General

EN type	T3
IEC power supply system	TN-S

Type 3 surge protection device - BT-1S-230AC/O - 2800625

Technical data

General

	TT
	IT with N conductor
Number of ports	One
Mode of protection	L-N
	L-PE
	N-PE
Mounting type	Screw mounting
Color	jet black RAL 9005
Housing material	PA 6.6
Degree of pollution	2
Distance between live and grounded parts	3 mm
Flammability rating according to UL 94	V-0
Type	Installation module
Number of positions	2
Surge protection fault message	optical

Protective circuit

Nominal voltage U_N	230/400 V AC (TN-S)
	230/400 V AC (TT - only in use with RCD)
Nominal frequency f_N	50 Hz (60 Hz)
Maximum continuous operating voltage U_C (L-N)	275 V AC
Maximum continuous operating voltage U_C (L-PE)	440 V AC
Maximum continuous operating voltage U_C (N-PE)	440 V AC
Rated load current I_L	16 A (30 °C)
Residual current I_{PE}	$\leq 3 \mu A$
Nominal discharge current I_n (8/20) μs	3 kA
Standby power consumption P_C	≤ 400 mVA
Reference test voltage U_{REF}	255 V AC
Max. discharge current I_{max} (8/20) μs	8 kA
Combination wave U_{OC}	6 kV
Energy absorption symmetrical	200 J (L-N (L))
Energy absorption, asymmetrical	230 J (L(N)-PE)
Voltage protection level U_p (L-N)	≤ 1.3 kV
Voltage protection level U_p (L-PE)	≤ 1.5 kV
Voltage protection level U_p (N-PE)	≤ 1.5 kV
TOV behavior at U_T (L-N)	335 V AC (5 s / withstand mode)
	440 V AC (120 min / safe failure mode)
TOV behavior at U_T (L-PE)	440 V AC (5 s / withstand mode)
	440 V AC (120 min / withstand mode)
	1455 V AC (200 ms / safe failure mode)

Type 3 surge protection device - BT-1S-230AC/O - 2800625

Technical data

Protective circuit

TOV behavior at U_T (N-PE)	1200 V AC (200 ms / safe failure mode)
Response time t_A (L-N)	≤ 25 ns
Response time t_A (L-PE)	≤ 100 ns
Max. required back-up fuse	16 A (MCB B)
Short-circuit current rating I_{SCCR}	1 kA AC
Max. backup fuse with branch wiring	16 A (MCB B)
Maximum backup fuse for through wiring	16 A (MCB B)

Connection data

Connection method	Spring-cage connection
Conductor cross section flexible	0.2 mm ² ... 2.5 mm ²
Conductor cross section solid	0.2 mm ² ... 2.5 mm ²
Conductor cross section AWG	24 ... 14
Stripping length	10 mm

Standards and Regulations

Standards/specifications	IEC 61643-11 2011
	EN 61643-11 2012

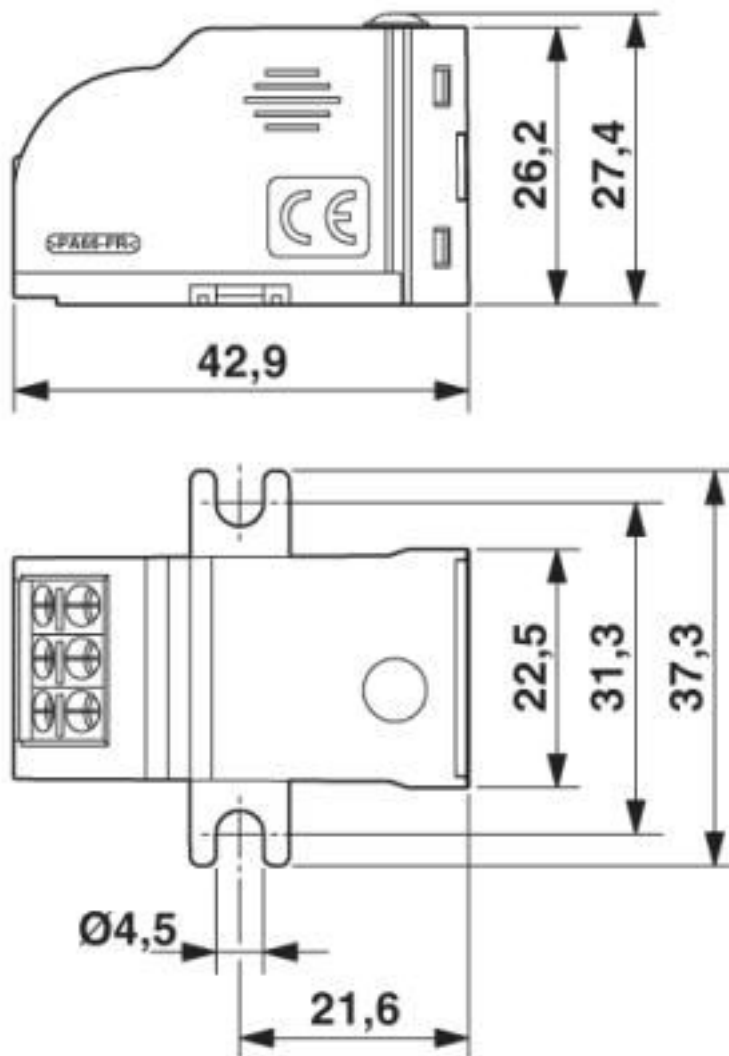
Environmental Product Compliance

China RoHS	Environmentally Friendly Use Period = 50 years
	For details about hazardous substances go to tab "Downloads", Category "Manufacturer's declaration"

Drawings

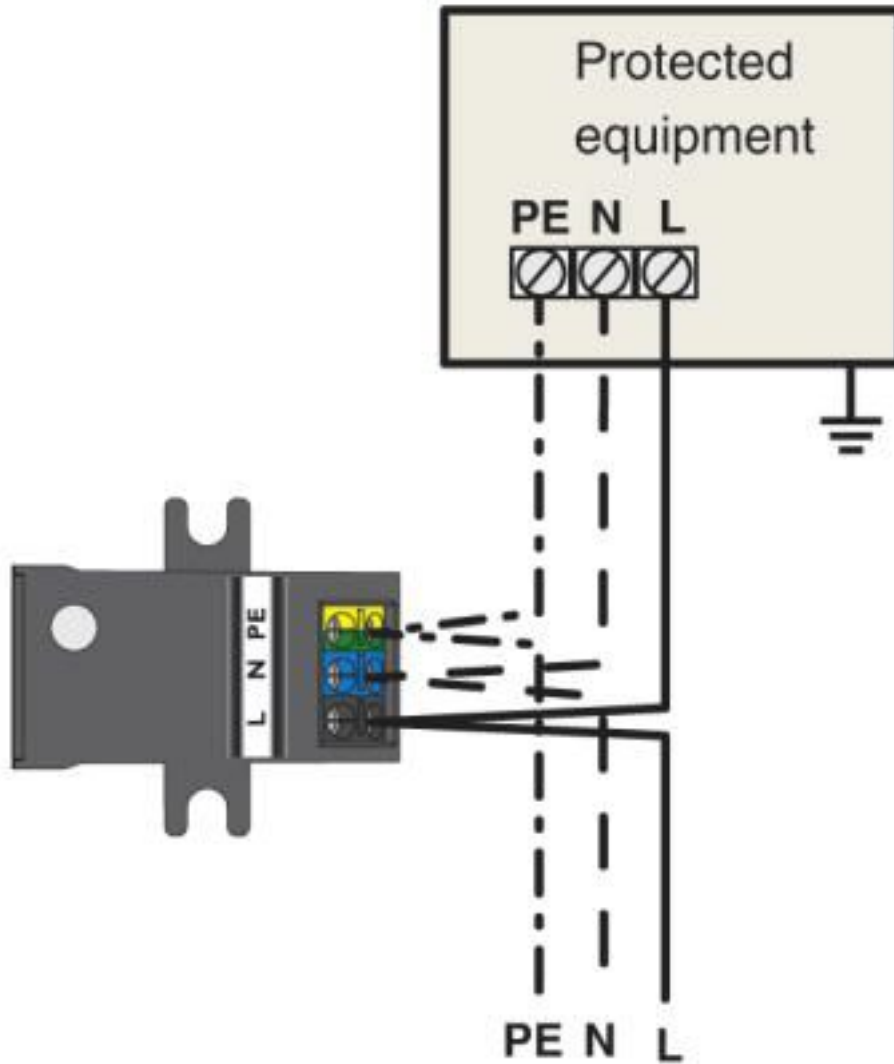
Type 3 surge protection device - BT-1S-230AC/O - 2800625

Dimensional drawing



Type 3 surge protection device - BT-1S-230AC/O - 2800625

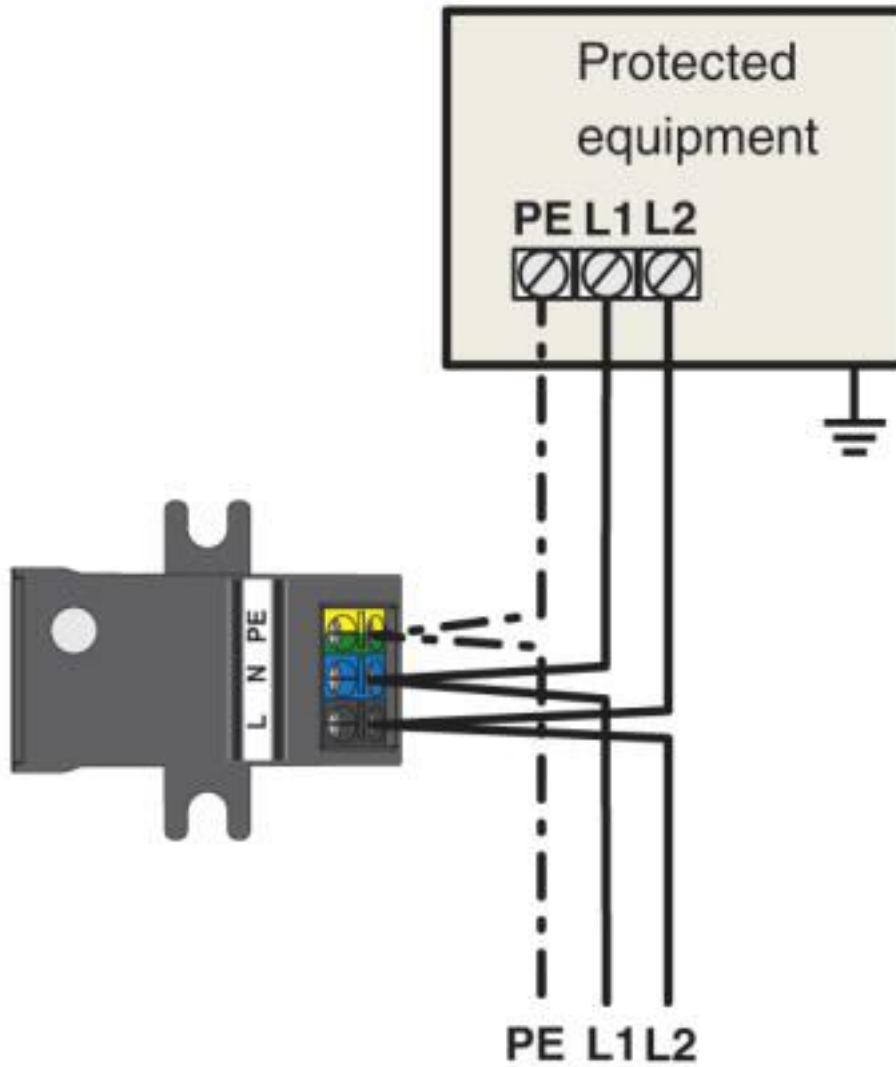
Application drawing



Installation directly in the device to be protected, 230 V TN-S/TT system - through wiring

Type 3 surge protection device - BT-1S-230AC/O - 2800625

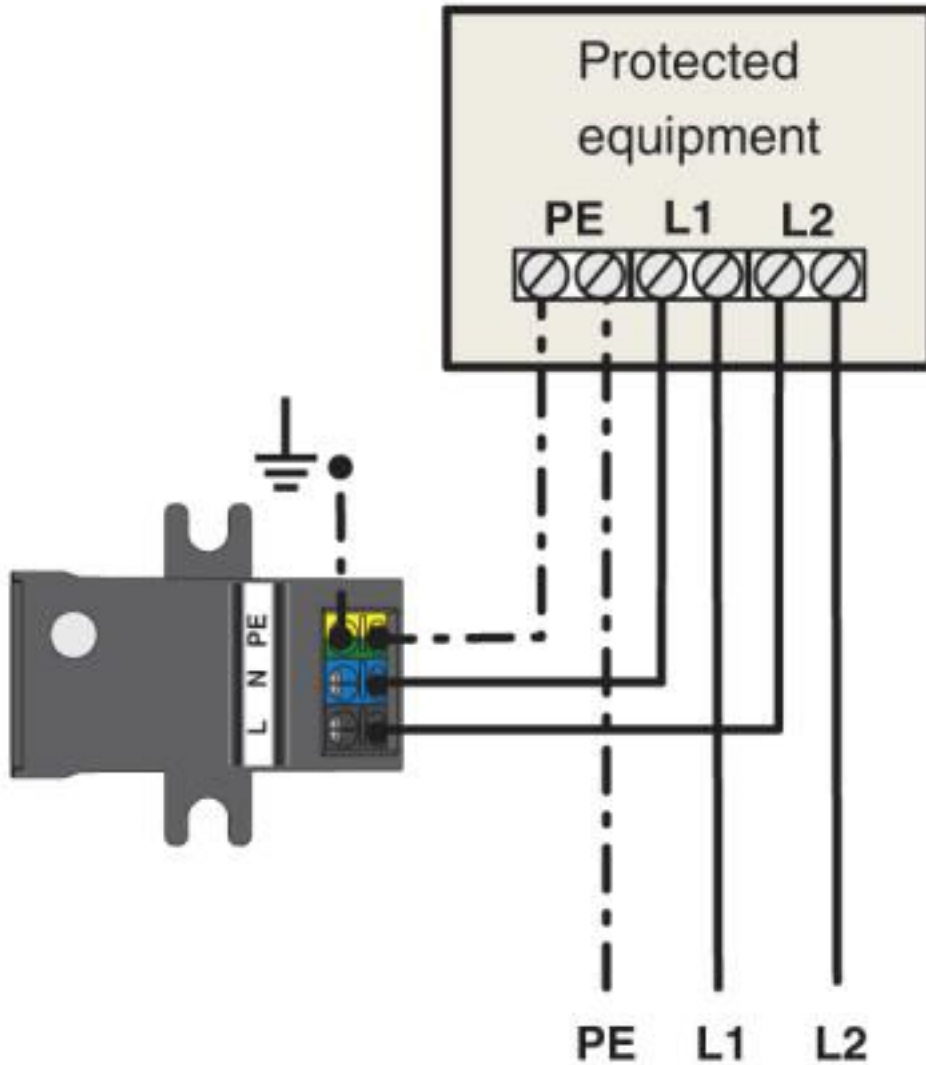
Application drawing



Installation directly in the device to be protected, 230 V IT system - through wiring

Type 3 surge protection device - BT-1S-230AC/O - 2800625

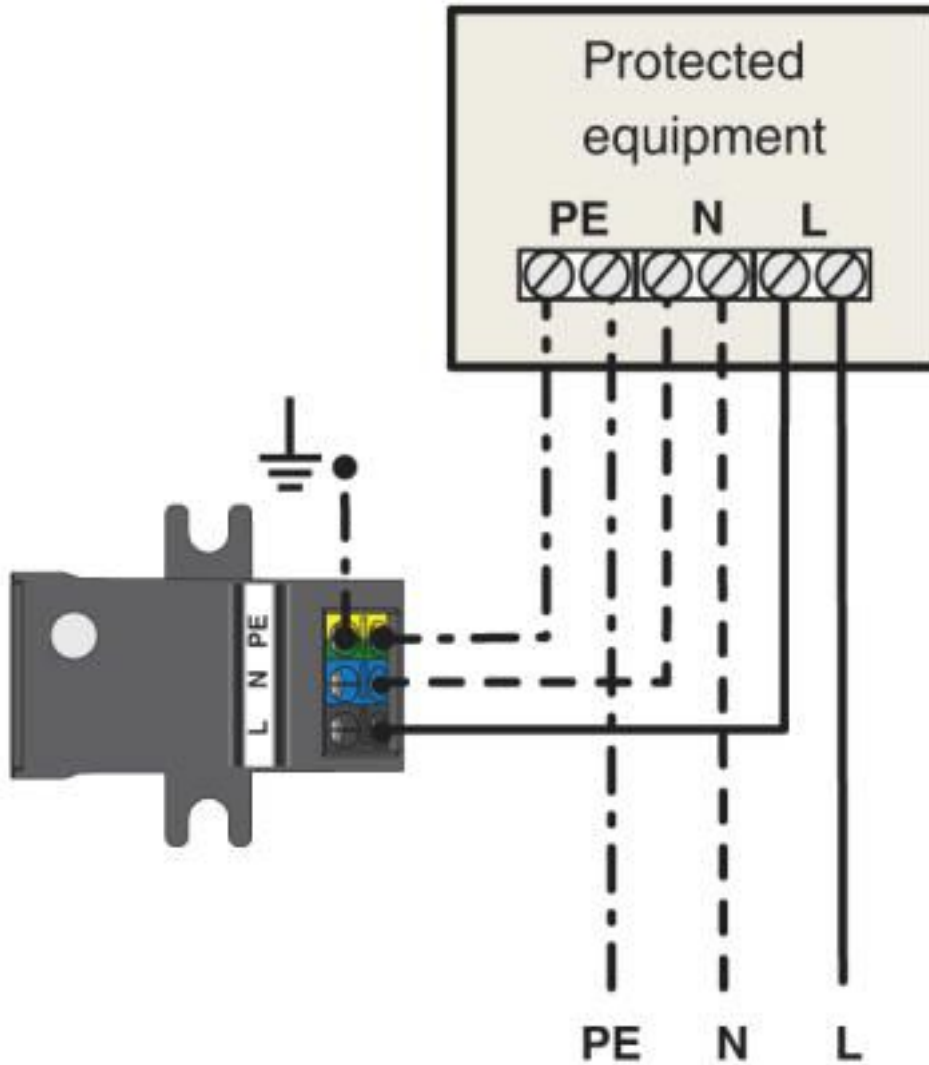
Application drawing



Installation directly in the device to be protected, 230 V IT system - branch wiring

Type 3 surge protection device - BT-1S-230AC/O - 2800625

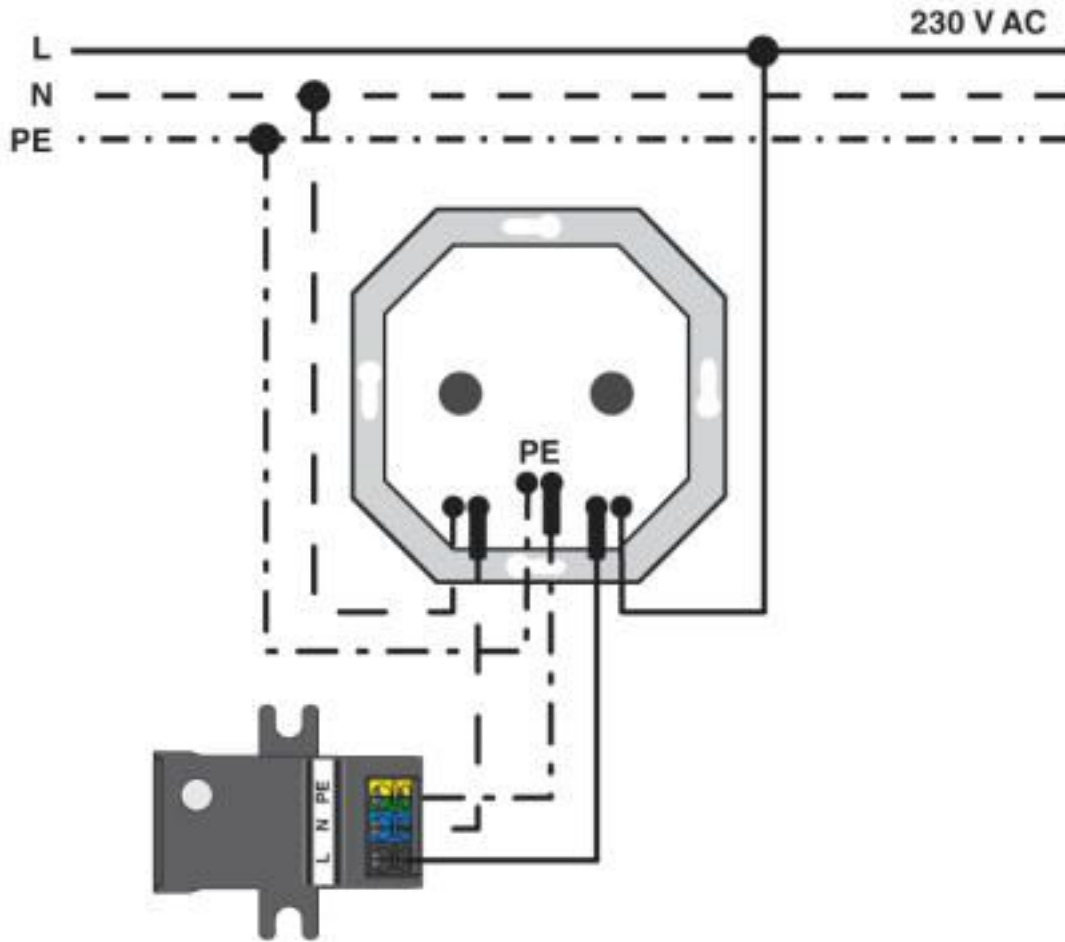
Application drawing



Installation directly in the device to be protected, 230 V TN-S/TT system - branch wiring

Type 3 surge protection device - BT-1S-230AC/O - 2800625

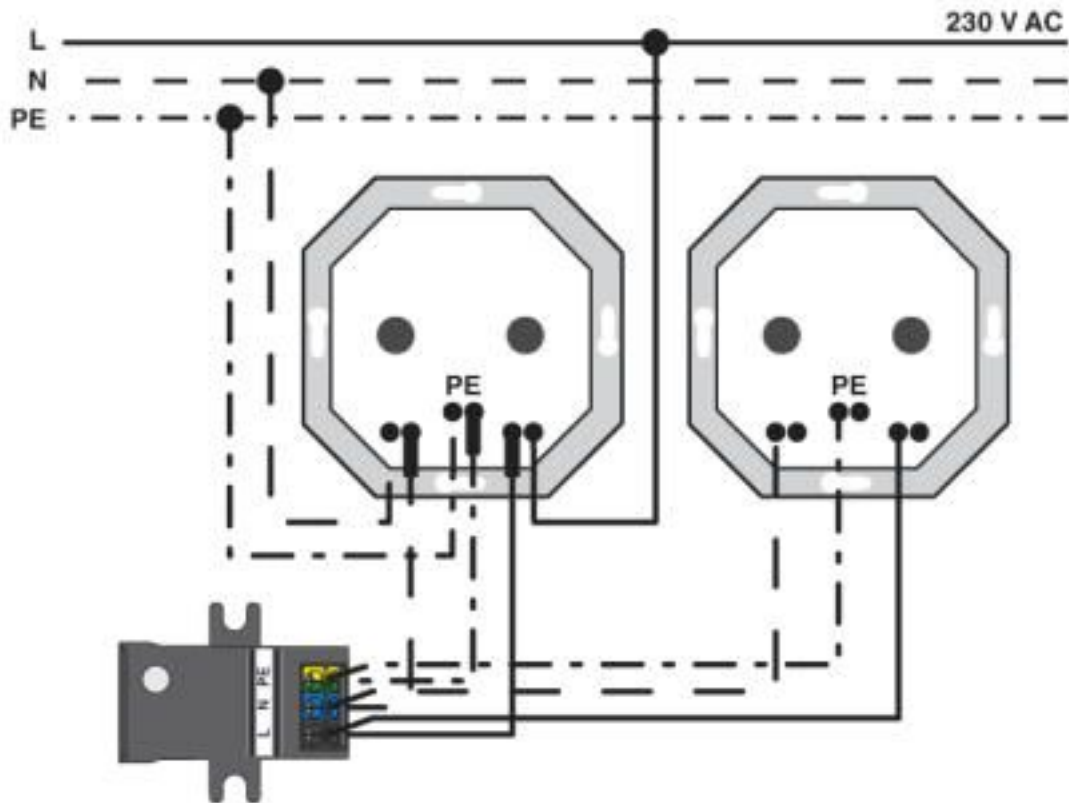
Application drawing



Installation in deep installation box - branch wiring

Type 3 surge protection device - BT-1S-230AC/O - 2800625

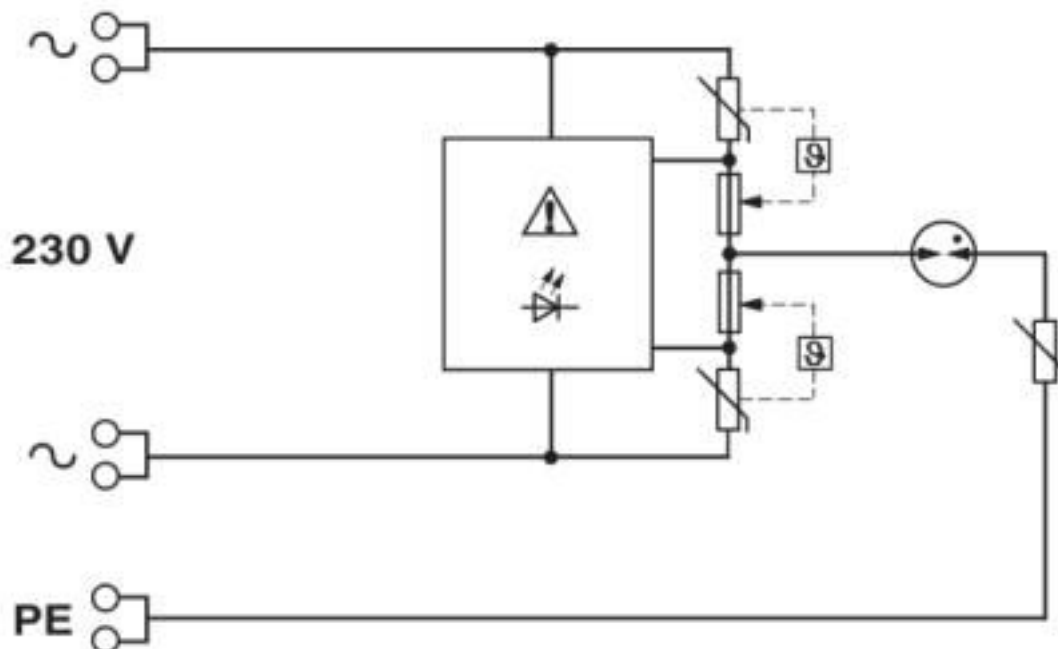
Application drawing



Installation in deep installation box - through wiring

Type 3 surge protection device - BT-1S-230AC/O - 2800625

Circuit diagram



Classifications

eCl@ss

eCl@ss 10.0.1	27130806
eCl@ss 4.0	27130800
eCl@ss 4.1	27130800
eCl@ss 5.0	27130800
eCl@ss 5.1	27130800
eCl@ss 6.0	27130800
eCl@ss 7.0	27130806
eCl@ss 8.0	27130806
eCl@ss 9.0	27130806

ETIM

ETIM 2.0	EC000942
ETIM 3.0	EC000942
ETIM 4.0	EC000942
ETIM 5.0	EC000942
ETIM 6.0	EC000942
ETIM 7.0	EC000942

UNSPSC

UNSPSC 6.01	30212010
UNSPSC 7.0901	39121610

Type 3 surge protection device - BT-1S-230AC/O - 2800625

Classifications

UNSPSC

UNSPSC 11	39121610
UNSPSC 12.01	39121610
UNSPSC 13.2	39121620
UNSPSC 18.0	39121620
UNSPSC 19.0	39121620
UNSPSC 20.0	39121620
UNSPSC 21.0	39121620

Approvals

Approvals

Approvals

EAC

Ex Approvals

Approval details

EAC		RU C- DE.*09.B.00169
-----	---	-------------------------

Phoenix Contact 2020 © - all rights reserved
<http://www.phoenixcontact.com>

PHOENIX CONTACT GmbH & Co. KG
Flachsmarktstr. 8
32825 Blomberg
Germany
Tel. +49 5235 300
Fax +49 5235 3 41200
<http://www.phoenixcontact.com>

X-ON Electronics

Largest Supplier of Electrical and Electronic Components

Click to view similar products for [Surge Suppressors](#) category:

Click to view products by [Phoenix Contact](#) manufacturer:

Other Similar products are found below :

[GUS1](#) [GUS12](#) [BSPM1A600D600LVR](#) [2800521](#) [29-2053](#) [GUS11](#) [GUS2](#) [GUS3](#) [30460](#) [SRA64C060X](#) [PC642C015](#) [1810-15-A3](#) [2713175](#)
[4B06B-EC1-150LF](#) [SRA6LC](#) [BPMA75D100LV](#) [CX06M](#) [CCTV1](#) [GUS13](#) [GUS14](#) [GUS5](#) [GUS6](#) [VAL-MS 320/3+0-FM](#) [VAL-US-](#)
[120/40/1+1-FM](#) [VAL-US-120/65/1+1-FM](#) [VAL-US-480D/30/3+0-FM](#) [VAL-US-120/40/1+0-FM](#) [LP-BFDN-CW](#) [LP-STRL-NFF](#) [LP-STRL-](#)
[DFF](#) [GUS22](#) [0804111](#) [5053609](#) [5053201](#) [SPD2-150-1P0](#) [SPD2-550-1P0](#) [6720005416](#) [6720005417](#) [1-2191595-2](#) [STC-CAT6-P0E-I](#) [SPD2-](#)
[350-1P0](#) [FLT-CP-350-ST](#) [TTC-6P-3-HF-F-M-12DC-UT-I](#) [SMTPA200](#) [2800989](#) [2906776](#) [2906810](#) [2906847](#) [2906848](#) [2906851](#)