

Surge protection device - TT-2/2- 24DC - 2838173

Please be informed that the data shown in this PDF Document is generated from our Online Catalog. Please find the complete data in the user's documentation. Our General Terms of Use for Downloads are valid (<http://phoenixcontact.com/download>)




Modular terminal block with three-stage surge protection for two signal wires with common reference potential, separate ground connection, nominal voltage: 24 V DC, for mounting on NS 35/7.5, terminal width: 6.2 mm, terminal height: 54.6 mm

Why buy this product

- Versions with and without disconnect knife
- Protection of two signal wires with common reference potential
- Multi-stage modular terminal blocks with screw connection technology
- Disconnection of signal circuits by disconnect knife



Key Commercial Data

Packing unit	10 pc
GTIN	 4 017918 172848
GTIN	4017918172848

Technical data

Dimensions

Height	79.6 mm
Width	6.2 mm
Depth	54.6 mm

Ambient conditions

Ambient temperature (operation)	-40 °C ... 85 °C
Altitude	≤ 2000 m
Degree of protection	IP20

General

Housing material	PA 6.6
Flammability rating according to UL 94	V-0

Surge protection device - TT-2/2- 24DC - 2838173

Technical data

General

Color	black
Standards for clearances and creepage distances	IEC 60664-1
Mounting type	DIN rail: 35 mm
Type	Double-level terminal block with PE foot – separate PE connection
Number of positions	2
Direction of action	Line-Earth Ground

Protective circuit

IEC test classification	C1
	C2
	C3
	D1
Nominal voltage U_N	24 V DC
Maximum continuous voltage U_C	30 V DC
Rated current	300 mA (40 °C)
Operating effective current I_C at U_C	$\leq 10 \mu\text{A}$ (per path)
Standby power consumption P_C	$\leq 1430 \text{ mVA}$
Residual current I_{PE}	$\leq 10 \mu\text{A}$ (per path)
Nominal discharge current I_n (8/20) μs (line-earth)	5 kA
Pulse discharge current I_{imp} (10/350) μs	500 A
Total discharge current I_{total} (8/20) μs	10 kA
Nominal pulse current I_{an} (10/1000) μs (line-earth)	100 A
Output voltage limitation at 1 kV/ μs (line-earth) spike	$\leq 50 \text{ V}$
Voltage protection level U_p (line-earth)	$\leq 90 \text{ V}$ (C2 - 10 kV / 5 kA)
	$\leq 55 \text{ V}$ (C1 - 1 kV/500 A)
	$\leq 45 \text{ V}$ (C3 - 10 A)
	$\leq 50 \text{ V}$ (C3 - 100 A)
	$\leq 130 \text{ V}$ (D1 - 500 A)
Response time t_A (line-earth)	$\leq 1 \text{ ns}$
Input attenuation aE , asym.	0.4 dB ($\leq 200 \text{ kHz} / 50 \Omega$)
	0.1 dB ($\leq 30 \text{ kHz} / 150 \Omega$)
Cut-off frequency f_g (3 dB), asym. (PE) in 50 Ohm system	typ. 1.5 MHz
Cut-off frequency f_g (3 dB), asym. (PE) in 150 Ohm system	typ. 550 kHz
Capacity (line-line)	$\leq 4 \text{ nF}$
Resistance in series	6.6 $\Omega \pm 20 \%$
Surge protection fault message	none
Max. required back-up fuse	315 mA (T/IEC 60127-2/3)
Impulse durability (line-earth)	C1 - 1 kV/500 A
	C2 - 10 kV/5 kA
	C3 - 100 A
	D1 - 500 A

Surge protection device - TT-2/2- 24DC - 2838173

Technical data

Protective circuit

Alternating current carrying capacity (line-earth)	0.5 A - 1 s
--	-------------

Connection data

Connection method	Screw connection
Connection method IN	Screw terminal blocks
Connection method OUT	Screw terminal blocks
Screw thread	M3
Tightening torque	0.8 Nm
Stripping length	8 mm
Conductor cross section flexible	0.2 mm ² ... 2.5 mm ²
Conductor cross section solid	0.2 mm ² ... 4 mm ²
Conductor cross section AWG	24 ... 14

Standards and Regulations

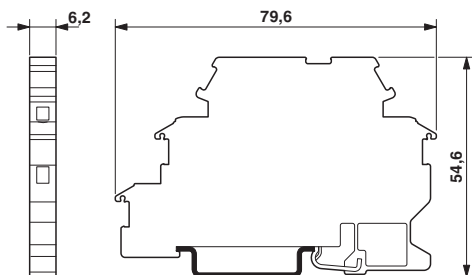
Standards/specifications	IEC 61643-21/A1 2008
	EN 61643-21/A1 2009

Environmental Product Compliance

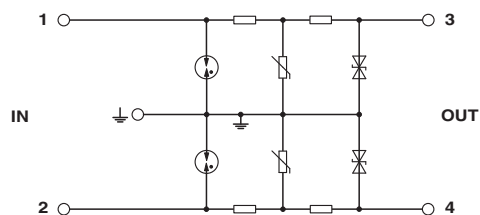
China RoHS	Environmentally Friendly Use Period = 50
	For details about hazardous substances go to tab "Downloads", Category "Manufacturer's declaration"

Drawings

Dimensional drawing



Circuit diagram



Approvals

Approvals

Approvals

UL Listed / EAC / EAC / DNV GL


Ex Approvals

UL Listed / cUL Listed / cULus Listed


Surge protection device - TT-2/2- 24DC - 2838173

Approvals

Approval details

UL Listed		http://database.ul.com/cgi-bin/XYV/template/LISEXT/1FRAME/index.htm	FILE E 138168
-----------	---	---	---------------

EAC			EAC-Zulassung
-----	---	--	---------------

EAC			RU C- DE.A*30.B01561
-----	---	--	-------------------------

DNV GL		http://exchange.dnv.com/tari/	TAE00001N7
--------	--	---	------------

Phoenix Contact 2018 © - all rights reserved
<http://www.phoenixcontact.com>

PHOENIX CONTACT GmbH & Co. KG
Flachsmarktstr. 8
32825 Blomberg
Germany
Tel. +49 5235 300
Fax +49 5235 3 41200
<http://www.phoenixcontact.com>

X-ON Electronics

Largest Supplier of Electrical and Electronic Components

Click to view similar products for [Surge Suppressors](#) category:

Click to view products by [Phoenix Contact](#) manufacturer:

Other Similar products are found below :

[GUS1](#) [GUS12](#) [BSPM1A600D600LVR](#) [2800521](#) [29-2053](#) [GUS11](#) [GUS2](#) [GUS3](#) [GUS4](#) [30460](#) [SRA64C060X](#) [PC642C015](#) [1810-15-A3](#)
[2713175](#) [4B06B-EC1-150LF](#) [SRA6LC](#) [BPMA75D100LV](#) [CX06M](#) [CCTV1](#) [GUS13](#) [GUS14](#) [GUS5](#) [GUS6](#) [VAL-MS 320/3+0-FM](#) [VAL-US-](#)
[120/40/1+1-FM](#) [VAL-US-120/65/1+1-FM](#) [VAL-US-480D/30/3+0-FM](#) [VAL-US-120/40/1+0-FM](#) [STCHSP121BT1RU](#) [LP-BFDN-CW](#) [LP-](#)
[STRL-NFF](#) [LP-STRL-DFE](#) [GUS22](#) [0804111](#) [5053609](#) [5053201](#) [SPD2-150-1P0](#) [SPD2-550-1P0](#) [6720005416](#) [6720005417](#) [1-2191595-2](#)
[STC-CAT6-P0E-I](#) [SPD2-350-1P0](#) [FLT-CP-350-ST](#) [TTC-6P-3-HF-F-M-12DC-UT-I](#) [SMTPA200](#) [2800989](#) [2906776](#) [2906810](#) [2906847](#)