

Surge protection device - TT-2-PE- 24DC - 2838186

Please be informed that the data shown in this PDF Document is generated from our Online Catalog. Please find the complete data in the user's documentation. Our General Terms of Use for Downloads are valid (<http://phoenixcontact.com/download>)




Modular terminal block with three-stage surge protection for a floating double conductor, separate ground connection, nominal voltage: 24 V DC, for mounting on NS 35/7.5, terminal width: 6.2 mm, terminal height: 54,6 mm

Why buy this product

- Versions with and without disconnect knife
- Protection of a floating double wire
- Protection of two signal wires with common reference potential
- Multi-stage modular terminal blocks with screw connection technology
- Disconnection of signal circuits by disconnect knife



Key Commercial Data

Packing unit	10 pc
GTIN	 4 017918 172855
GTIN	4017918172855

Technical data

Dimensions

Height	79.6 mm
Width	6.2 mm
Depth	54.6 mm

Ambient conditions

Ambient temperature (operation)	-40 °C ... 85 °C
Altitude	≤ 2000 m
Degree of protection	IP20

General

Housing material	PA 6.6
------------------	--------

Surge protection device - TT-2-PE- 24DC - 2838186

Technical data

General

Flammability rating according to UL 94	V-0
Color	black
Standards for clearances and creepage distances	IEC 60664-1
Mounting type	DIN rail: 35 mm
Type	Double-level terminal block with PE foot – separate PE connection
Number of positions	2
Direction of action	Line-Line & Line-Earth Ground

Protective circuit

IEC test classification	C1
	C2
	C3
	D1
Nominal voltage U_N	24 V DC
Maximum continuous voltage U_C	30 V DC
Rated current	300 mA (40 °C)
Operating effective current I_C at U_C	$\leq 10 \mu A$
Standby power consumption P_C	≤ 730 mVA
Residual current I_{PE}	$\leq 1 \mu A$
Nominal discharge current I_n (8/20) μs (line-line)	5 kA
Nominal discharge current I_n (8/20) μs (line-earth)	5 kA
Pulse discharge current I_{imp} (10/350) μs	500 A
Total discharge current I_{total} (8/20) μs	10 kA
Nominal pulse current I_{an} (10/1000) μs (line-line)	100 A
Nominal pulse current I_{an} (10/1000) μs (line-earth)	100 A
Output voltage limitation at 1 kV/ μs (line-line) spike	≤ 45 V
Output voltage limitation at 1 kV/ μs (line-earth) spike	≤ 650 V
Voltage protection level U_p (line-line)	≤ 70 V (C2 - 10 kV / 5 kA)
	≤ 55 V (C1 - 1 kV/500 A)
	≤ 45 V (C3 - 10 A)
	≤ 45 V (C3 - 100 A)
Voltage protection level U_p (line-earth)	≤ 850 V (C2 - 10 kV / 5 kA)
	≤ 650 V (C1 - 1 kV/500 A)
	≤ 850 V (C3 - 10 A)
	≤ 900 V (C3 - 100 A)
	≤ 800 V (D1 - 500 A)
Response time t_A (line-line)	≤ 1 ns
Response time t_A (line-earth)	≤ 100 ns
Input attenuation aE, sym.	typ. 0.6 dB (≤ 500 kHz / 50 Ω)
	typ. 0.3 dB (≤ 160 kHz / 150 Ω)

Surge protection device - TT-2-PE- 24DC - 2838186

Technical data

Protective circuit

Cut-off frequency fg (3 dB), sym. in 50 Ohm system	typ. 3 MHz
Cut-off frequency fg (3 dB), sym. in 150 Ohm system	typ. 1 MHz
Capacity (line-line)	≤ 4 nF
Resistance in series	3.7 Ω 10 %
Surge protection fault message	none
Max. required back-up fuse	315 mA (T/IEC 60127-2/3)
Impulse durability (line-line)	C1 - 1 kV/500 A
	C2 - 10 kV/5 kA
	C3 - 100 A
Impulse durability (line-earth)	C1 - 1 kV/500 A
	C2 - 10 kV/5 kA
	C3 - 100 A
	D1 - 500 A
Alternating current carrying capacity (line-line)	0.25 A/1s
Alternating current carrying capacity (line-earth)	0.25 A/1s
Pulse reset time (line-line)	≤ 400 ms, at U _c and 330 mA
Pulse reset time (line-earth)	≤ 400 ms, at U _c and 330 mA

Connection data

Connection method	Screw connection
Connection method IN	Screw terminal blocks
Connection method OUT	Screw terminal blocks
Screw thread	M3
Tightening torque	0.6 Nm
Stripping length	8 mm
Conductor cross section flexible	0.2 mm ² ... 2.5 mm ²
Conductor cross section solid	0.2 mm ² ... 4 mm ²
Conductor cross section AWG	24 ... 12

Standards and Regulations

Standards/regulations	IEC 61643-21
	EN 61643-21
Standards/specifications	IEC 61643-21/A1 2008
	EN 61643-21/A1 2009

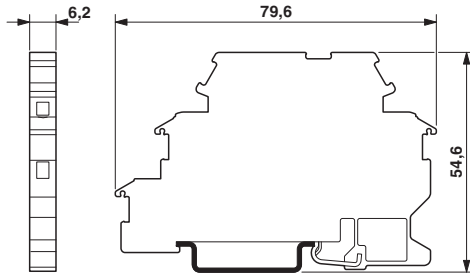
Environmental Product Compliance

China RoHS	Environmentally Friendly Use Period = 50
	For details about hazardous substances go to tab "Downloads", Category "Manufacturer's declaration"

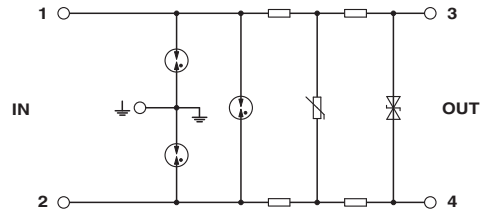
Drawings

Surge protection device - TT-2-PE- 24DC - 2838186

Dimensional drawing



Circuit diagram



Approvals

Approvals

Approvals

UL Listed / EAC / EAC / DNV GL

Ex Approvals

UL Listed / cUL Listed / cULus Listed

Approval details

UL Listed		http://database.ul.com/cgi-bin/XYV/template/LISEXT/1FRAME/index.htm	FILE E 138168
-----------	--	---	---------------

EAC		EAC-Zulassung
-----	--	---------------

EAC		RU C- DE.A*30.B01561
-----	--	-------------------------

DNV GL	http://exchange.dnv.com/tari/	TAE00001N7
--------	---	------------

Phoenix Contact 2018 © - all rights reserved
<http://www.phoenixcontact.com>

PHOENIX CONTACT GmbH & Co. KG
Flachsmarktstr. 8
32825 Blomberg
Germany
Tel. +49 5235 300
Fax +49 5235 3 41200
<http://www.phoenixcontact.com>

X-ON Electronics

Largest Supplier of Electrical and Electronic Components

Click to view similar products for [Surge Suppressors](#) category:

Click to view products by [Phoenix Contact](#) manufacturer:

Other Similar products are found below :

[GUS1](#) [GUS12](#) [BSPM1A600D600LVR](#) [2800521](#) [29-2053](#) [GUS11](#) [GUS2](#) [GUS3](#) [30460](#) [SRA64C060X](#) [PC642C015](#) [1810-15-A3](#) [2713175](#)
[4B06B-EC1-150LF](#) [SRA6LC](#) [BPMA75D100LV](#) [CX06M](#) [CCTV1](#) [GUS13](#) [GUS14](#) [GUS5](#) [GUS6](#) [VAL-MS 320/3+0-FM](#) [VAL-US-](#)
[120/40/1+1-FM](#) [VAL-US-120/65/1+1-FM](#) [VAL-US-480D/30/3+0-FM](#) [VAL-US-120/40/1+0-FM](#) [LP-STRL-NFF](#) [LP-STRL-DFE](#) [GUS22](#)
[0804111](#) [5053609](#) [5053201](#) [SPD2-150-1P0](#) [SPD2-550-1P0](#) [6720005416](#) [6720005417](#) [1-2191595-2](#) [STC-CAT6-P0E-I](#) [SPD2-350-1P0](#) [FLT-](#)
[CP-350-ST](#) [TTC-6P-3-HF-F-M-12DC-UT-I](#) [SMTPA200](#) [2800989](#) [2906776](#) [2906810](#) [2906847](#) [2906848](#) [2906851](#) [2910332](#)