

Surge protection device - TT-2-PE-110AC - 2858483

Please be informed that the data shown in this PDF Document is generated from our Online Catalog. Please find the complete data in the user's documentation. Our General Terms of Use for Downloads are valid (<http://phoenixcontact.com/download>)




Modular terminal block with two-stage surge protection for a floating double conductor, separate PE connection, nominal voltage: 110 V AC, for mounting on NS 35/7.5, terminal block width 6.2 mm, terminal block height: 54.6 mm

Your advantages

- ✓ Versions with and without disconnect knife
- ✓ Protection of a floating double wire
- ✓ Protection of two signal wires with common reference potential
- ✓ Multi-stage modular terminal blocks with screw connection technology
- ✓ Disconnection of signal circuits by disconnect knife



Key Commercial Data

Packing unit	10 pc
GTIN	 4 017918 893156
GTIN	4017918893156

Technical data

Dimensions

Height	79.6 mm
Width	6.2 mm
Depth	54.6 mm

Ambient conditions

Ambient temperature (operation)	-40 °C ... 85 °C
Altitude	≤ 2000 m
Degree of protection	IP20

General

Housing material	PA 6.6
Flammability rating according to UL 94	V-0
Color	black

Surge protection device - TT-2-PE-110AC - 2858483

Technical data

General

Standards for clearances and creepage distances	IEC 60664-1
Mounting type	DIN rail: 35 mm
Type	Double-level terminal block with PE foot – separate PE connection
Number of positions	2
Direction of action	Line-Line & Line-Earth Ground

Protective circuit

IEC test classification	C1
	C2
	C3
	D1
Nominal voltage U_N	110 V AC
Maximum continuous voltage U_C	120 V AC
Rated current	300 mA (30 °C)
Operating effective current I_C at U_C	$\leq 5 \mu\text{A}$
Residual current I_{PE}	$\leq 10 \mu\text{A}$
Nominal discharge current I_n (8/20) μs (line-line)	5 kA
Nominal discharge current I_n (8/20) μs (line-earth)	5 kA
Pulse discharge current I_{imp} (10/350) μs	500 A
Total discharge current I_{total} (8/20) μs	10 kA
Max. discharge current I_{max} (8/20) μs maximum (line-line)	5 kA
Max. discharge current I_{max} (8/20) μs maximum (line-earth)	5 kA
Nominal pulse current I_{an} (10/1000) μs (line-earth)	100 A
Output voltage limitation at 1 kV/ μs (line-line) spike	$\leq 250 \text{ V}$
Output voltage limitation at 1 kV/ μs (line-earth) spike	$\leq 650 \text{ V}$
Voltage protection level U_p (line-line)	$\leq 300 \text{ V}$ (C2 - 10 kV / 5 kA)
	$\leq 250 \text{ V}$ (C1 - 1 kV/500 A)
Voltage protection level U_p (line-earth)	$\leq 900 \text{ V}$ (C2 - 10 kV / 5 kA)
	$\leq 650 \text{ V}$ (C1 - 1 kV/500 A)
	$\leq 850 \text{ V}$ (C3 - 10 A)
	$\leq 900 \text{ V}$ (C3 - 100 A)
	$\leq 800 \text{ V}$ (D1 - 500 A)
Response time t_A (line-line)	$\leq 1 \text{ ns}$
Response time t_A (line-earth)	$\leq 100 \text{ ns}$
Input attenuation aE, sym.	typ. 1.5 dB ($\leq 2 \text{ MHz}$)
	typ. 0.6 dB ($\leq 500 \text{ kHz} / 150 \Omega$)
Cut-off frequency f_g (3 dB), sym. in 50 Ohm system	typ. 15 MHz
Cut-off frequency f_g (3 dB), sym. in 150 Ohm system	typ. 8 MHz
Capacity (line-line)	typ. 600 pF
Capacity (line-earth)	$\leq 2 \text{ pF}$

Surge protection device - TT-2-PE-110AC - 2858483

Technical data

Protective circuit

Resistance per path	9.4 Ω 10 %
Surge protection fault message	none
Max. required back-up fuse	315 mA (T/IEC 60127-2/3)
Impulse durability (line-line)	C1 - 1 kV / 500 A C2 - 10 kV / 5 kA
Impulse durability (line-earth)	C1 - 1 kV / 500 A C2 - 10 kV / 5 kA C3 - 100 A D1 - 500 A
Alternating current carrying capacity (line-line)	0.1 A - 1 s
Alternating current carrying capacity (line-earth)	1 A - 1 s

Connection data

Connection method	Screw connection
Connection method IN	Screw terminal blocks
Connection method OUT	Screw terminal blocks
Screw thread	M3
Tightening torque	0.8 Nm
Stripping length	8 mm
Conductor cross section flexible	0.2 mm ² ... 2.5 mm ²
Conductor cross section solid	0.2 mm ² ... 4 mm ²
Conductor cross section AWG	24 ... 14

Standards and Regulations

Standards/regulations	IEC 61643-21 EN 61643-21
Standards/specifications	IEC 61643-21/A1 2008 EN 61643-21/A1 2009

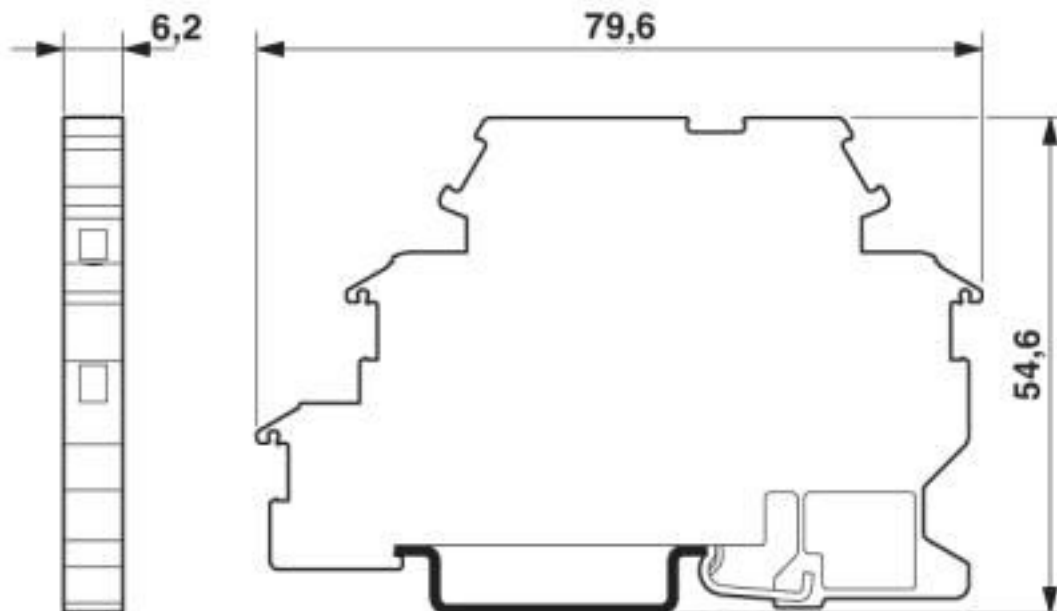
Environmental Product Compliance

China RoHS	Environmentally Friendly Use Period = 50 years
	For details about hazardous substances go to tab "Downloads", Category "Manufacturer's declaration"

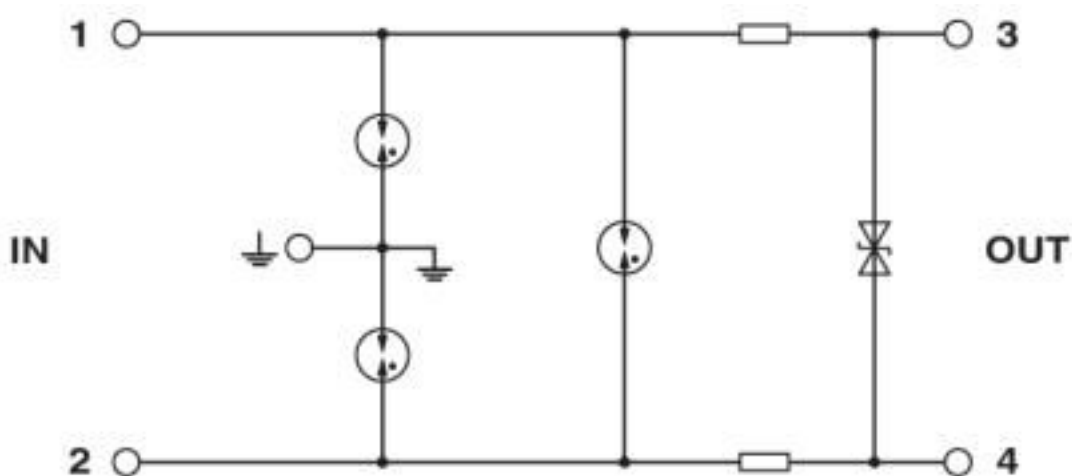
Drawings

Surge protection device - TT-2-PE-110AC - 2858483

Dimensional drawing



Circuit diagram



Classifications

eCl@ss

eCl@ss 10.0.1	27130807
eCl@ss 4.0	27130800
eCl@ss 4.1	27130800
eCl@ss 5.0	27130800
eCl@ss 5.1	27130800
eCl@ss 6.0	27130800
eCl@ss 7.0	27130807

Surge protection device - TT-2-PE-110AC - 2858483

Classifications

eCl@ss

eCl@ss 8.0	27130807
eCl@ss 9.0	27130807

ETIM

ETIM 2.0	EC000943
ETIM 3.0	EC000943
ETIM 4.0	EC000943
ETIM 5.0	EC000943
ETIM 6.0	EC000943
ETIM 7.0	EC000943

UNSPSC

UNSPSC 6.01	30212010
UNSPSC 7.0901	39121610
UNSPSC 11	39121610
UNSPSC 12.01	39121610
UNSPSC 13.2	39121620
UNSPSC 18.0	39121620
UNSPSC 19.0	39121620
UNSPSC 20.0	39121620
UNSPSC 21.0	39121620

Approvals


Approvals


Approvals

EAC / EAC

Ex Approvals

Approval details

EAC		EAC-Zulassung
-----	---	---------------

EAC		RU C- DE.*09.B.00169
-----	---	-------------------------

Surge protection device - TT-2-PE-110AC - 2858483

Accessories

Accessories

End cover

End cover - D-DEK 1,5 BK - 2838995



Cover for setting the end of a TERMITRAB TT-2-PE... and TT-2/2 row of terminal blocks, color: black

Labeled terminal marker

Zack Marker strip, flat - ZBF 6,LGS:FORTL.ZAHLEN - 0808749



Zack Marker strip, flat, Strip, white, labeled, printed horizontally: consecutive numbers 1 ... 10, 11 ... 20, etc. up to 91 ... 100, mounting type: snap into flat marker groove, for terminal block width: 6.2 mm, lettering field size: 5.15 x 6.15 mm, Number of individual labels: 10

Marker pen

Marker pen - B-STIFT - 1051993



Marker pen, for manual labeling of unprinted Zack strips, smear-proof and waterproof, line thickness 0.5 mm

Terminal marking

Zack Marker strip, flat - ZBF 6:UNBEDRUCKT - 0808710



Zack Marker strip, flat, Strip, white, unlabeled, can be labeled with: PLOTMARK, CMS-P1-PLOTTER, mounting type: snap into flat marker groove, for terminal block width: 6.2 mm, lettering field size: 5.15 x 6.15 mm, Number of individual labels: 10

Zack Marker strip, flat - ZBF 6/WH-100:UNBEDRUCKT - 0808736



Zack Marker strip, flat, Strip, white, unlabeled, can be labeled with: PLOTMARK, CMS-P1-PLOTTER, mounting type: snap into flat marker groove, for terminal block width: 6.2 mm, lettering field size: 5.15 x 6.15 mm, Number of individual labels: 10

Surge protection device - TT-2-PE-110AC - 2858483

Accessories

Additional products

End cover - D-DEK 1,5 BK - 2838995



Cover for setting the end of a TERMITRAB TT-2-PE... and TT-2/2 row of terminal blocks, color: black

Shield connection - SSA 3-6 - 2839295



Shield fast connection for 3 ... 6 mm cable diameter. Potential connecting cable: 200 mm, 1 mm², color: black

Shield connection - SSA 5-10 - 2839512



Shield fast connection for 5 ... 10 mm cable diameter. Potential connecting cable: 200 mm, 1 mm², color: black

Phoenix Contact 2020 © - all rights reserved
<http://www.phoenixcontact.com>

PHOENIX CONTACT GmbH & Co. KG
Flachsmarktstr. 8
32825 Blomberg
Germany
Tel. +49 5235 300
Fax +49 5235 3 41200
<http://www.phoenixcontact.com>

X-ON Electronics

Largest Supplier of Electrical and Electronic Components

Click to view similar products for [Surge Suppressors](#) category:

Click to view products by [Phoenix Contact](#) manufacturer:

Other Similar products are found below :

[GUS1](#) [GUS12](#) [BSPM1A600D600LVR](#) [2800521](#) [29-2053](#) [GUS11](#) [GUS2](#) [GUS3](#) [GUS4](#) [30460](#) [SRA64C060X](#) [PC642C015](#) [1810-15-A3](#)
[2713175](#) [4B06B-EC1-150LF](#) [SRA6LC](#) [BPMA75D100LV](#) [CX06M](#) [CCTV1](#) [GUS13](#) [GUS14](#) [GUS5](#) [GUS6](#) [VAL-MS 320/3+0-FM](#) [VAL-US-](#)
[120/40/1+1-FM](#) [VAL-US-120/65/1+1-FM](#) [VAL-US-480D/30/3+0-FM](#) [VAL-US-120/40/1+0-FM](#) [STCHSP121BT1RU](#) [LP-BFDN-CW](#) [LP-](#)
[STRL-NFF](#) [LP-STRL-DFE](#) [GUS22](#) [0804111](#) [5053609](#) [5053201](#) [SPD2-150-1P0](#) [SPD2-550-1P0](#) [6720005416](#) [6720005417](#) [1-2191595-2](#)
[STC-CAT6-P0E-I](#) [SPD2-350-1P0](#) [FLT-CP-350-ST](#) [TTC-6P-3-HF-F-M-12DC-UT-I](#) [SMTPA200](#) [2800989](#) [2906776](#) [2906810](#) [2906847](#)