

Surge protection device - TT-ST-2-PE-24DC - 2858878

Please be informed that the data shown in this PDF Document is generated from our Online Catalog. Please find the complete data in the user's documentation. Our General Terms of Use for Downloads are valid (<http://phoenixcontact.com/download>)




Spring cage modular terminal block with integrated surge protection, for assembly on NS 35/7.5, voltage U_N 24 V DC, terminal width: 6.2 mm, cover width: 2.2 mm

Why buy this product

- Multi-stage modular terminal blocks with spring-cage connection
- Disconnection of signal circuits by disconnect knife



Key Commercial Data

Packing unit	10 pc
GTIN	 4 017918 939120
GTIN	4017918939120

Technical data

Dimensions

Height	100 mm
Width	6.2 mm
Depth	63.5 mm

Ambient conditions

Ambient temperature (operation)	-40 °C ... 85 °C
Altitude	max. 2000 m
Degree of protection	IP20

General

Housing material	PA 6.6
Flammability rating according to UL 94	V-0
Color	black
Standards for clearances and creepage distances	EN 60664-1

Surge protection device - TT-ST-2-PE-24DC - 2858878

Technical data

General

	IEC 60664-1
Overvoltage category	III
Degree of pollution	2
Mounting type	DIN rail: 35 mm
Type	Double-level terminal block
Number of positions	2
Direction of action	Line-Line & Line-Earth Ground

Protective circuit

IEC test classification	C1
	C2
	C3
	D1
VDE requirement class	C1
	C2
	C3
	D1
Nominal voltage U_N	24 V DC
Maximum continuous voltage U_C	30 V DC
	21 V AC
Rated current	350 mA (45°C)
Operating effective current I_C at U_C	$\leq 10 \mu A$
Standby power consumption P_C	$\leq 1.94 VA$
Residual current I_{PE}	$\leq 2 \mu A$
Nominal discharge current I_n (8/20) μs (line-line)	5 kA
Nominal discharge current I_n (8/20) μs (line-earth)	5 kA
Pulse discharge current I_{imp} (10/350) μs	1 kA (per path)
Total discharge current I_{total} (8/20) μs	10 kA
Total discharge current I_{total} (10/350) μs	2 kA
Max. discharge current I_{max} (8/20) μs maximum (line-line)	5 kA
Max. discharge current I_{max} (8/20) μs maximum (line-earth)	5 kA
Nominal pulse current I_{an} (10/1000) μs (line-line)	100 A
Nominal pulse current I_{an} (10/1000) μs (line-earth)	200 A (in total)
Output voltage limitation at 1 kV/ μs (line-line) spike	$\leq 40 V$
Output voltage limitation at 1 kV/ μs (line-earth) spike	$\leq 600 V$
Output voltage limitation at 1 kV/ μs (line-line) static	$\leq 40 V$
Output voltage limitation at 1 kV/ μs (line-earth) static	$\leq 600 V$
Residual voltage at I_n (line-line)	$\leq 40 V$
Voltage protection level U_p (line-line)	$\leq 60 V$ (C2 - 10 kV / 5 kA)
	$\leq 40 V$ (stat.)

Surge protection device - TT-ST-2-PE-24DC - 2858878

Technical data

Protective circuit

Voltage protection level U_p (line-earth)	≤ 600 V (C2 - 10 kV / 5 kA)
Response time t_A (line-line)	≤ 1 ns
Response time t_A (line-earth)	≤ 100 ns
Input attenuation aE, sym.	typ. 1 dB (400 kHz/50 Ω)
	typ. 0.4 dB (150 kHz/150 Ω)
	typ. 0.1 dB (30 kHz/600 Ω)
Cut-off frequency f_g (3 dB), sym. in 50 Ohm system	3 MHz
Cut-off frequency f_g (3 dB), sym. in 150 Ohm system	1 MHz
Cut-off frequency f_g (3 dB), sym. in 600 Ohm system	typ. 250 kHz
Capacity (line-line)	4 nF
Capacity (line-earth)	2 pF
Resistance in series	6.6 $\Omega \pm 20$ %
Surge protection fault message	none
Max. required back-up fuse	370 mA
Impulse durability (line-line)	C2 - 10 kV/5 kA
	C3 - 100 A
Impulse durability (line-earth)	C2 - 10 kV/5 kA
	D1 - 1 kA
	C3 - 100 A

Connection data

Connection method	Spring-cage connection
Connection method IN	Spring-cage
Connection method OUT	Spring-cage
Stripping length	8 mm
Conductor cross section flexible	0.2 mm ² ... 2.5 mm ²
Conductor cross section solid	0.2 mm ² ... 4 mm ²
Conductor cross section AWG	24 ... 14

Standards and Regulations

Standards/specifications	IEC 61643-21/A1 2008
	EN 61643-21/A1 2009

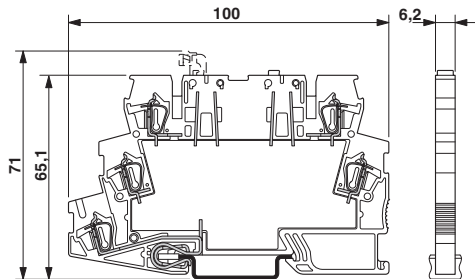
Environmental Product Compliance

REACH SVHC	Lead 7439-92-1
China RoHS	Environmentally friendly use period: unlimited = EFUP-e
	No hazardous substances above threshold values

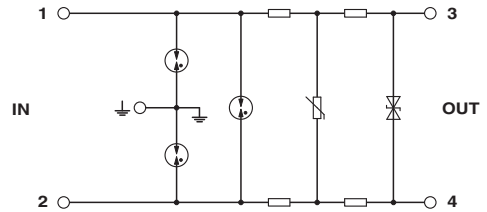
Drawings

Surge protection device - TT-ST-2-PE-24DC - 2858878

Dimensional drawing



Circuit diagram



Approvals

Approvals

Approvals

UL Listed / DNV GL

Ex Approvals

Approval details

UL Listed



<http://database.ul.com/cgi-bin/XYV/template/LISEXT/1FRAME/index.htm>

FILE E 138168

DNV GL

<http://exchange.dnv.com/tari/>

TAE00001N7

Phoenix Contact 2018 © - all rights reserved
<http://www.phoenixcontact.com>

PHOENIX CONTACT GmbH & Co. KG
Flachsmarktstr. 8
32825 Blomberg
Germany
Tel. +49 5235 300
Fax +49 5235 3 41200
<http://www.phoenixcontact.com>

X-ON Electronics

Largest Supplier of Electrical and Electronic Components

Click to view similar products for [Pluggable Terminal Blocks](#) category:

Click to view products by [Phoenix Contact](#) manufacturer:

Other Similar products are found below :

[57.510.0053](#) [MC 1.5/ 6-ST-3.5 GY AU](#) [734-104](#) [734-302](#) [8-141-P](#) [8426620000](#) [860505](#) [860810](#) [GBPACX-12](#) [93.731.4953.0](#) [PV05-5,08-K](#)
[PVP02-5,00](#) [PVP03-3,50](#) [PVP04-3,50](#) [PVS02-5,00](#) [1-1986160-3](#) [1377680000](#) [1531000000](#) [1546228-5](#) [ELFH16150](#) [ELFP03110](#)
[ELFP10210](#) [ELFT06250](#) [ELVP03100](#) [1700101](#) [1700410](#) [1700425](#) [1702246](#) [1705229](#) [1710175](#) [1714537](#) [1717806](#) [1719600](#) [1728941](#)
[1734692](#) [1734795](#) [1736036](#) [1740194](#) [1740291](#) [1740628](#) [1740990](#) [1746952](#) [1750207](#) [1752441](#) [1752865](#) [1754115](#) [1754144](#) [1756913](#)
[1760051](#) [1760336](#)