

Surge protection device - TT-ST-2/2-24DC - 2858881

Please be informed that the data shown in this PDF Document is generated from our Online Catalog. Please find the complete data in the user's documentation. Our General Terms of Use for Downloads are valid (<http://phoenixcontact.com/download>)




Spring cage modular terminal block with integrated surge protection, for assembly on NS 35/7.5, voltage U_N 24 V DC, terminal width: 6.2 mm, cover width: 2.2 mm

Why buy this product

- Multi-stage modular terminal blocks with spring-cage connection
- Disconnection of signal circuits by disconnect knife



Key Commercial Data

Packing unit	10 pc
GTIN	 4 017918 939137
GTIN	4017918939137

Technical data

Dimensions

Height	100 mm
Width	6.2 mm
Depth	63.5 mm (incl. DIN rail 7.5 mm)

Ambient conditions

Ambient temperature (operation)	-40 °C ... 85 °C
Altitude	≤ 2000 m (amsl (above mean sea level))
Degree of protection	IP20

General

Housing material	PA 6.6
Flammability rating according to UL 94	V-0
Color	jet black RAL 9005
Overvoltage category	III

Surge protection device - TT-ST-2/2-24DC - 2858881

Technical data

General

Degree of pollution	2
Mounting type	DIN rail: 35 mm
Type	Double-level terminal block
Number of positions	2
Direction of action	Line-Earth Ground

Protective circuit

IEC test classification	C1
	C2
	C3
	D1
Nominal voltage U_N	24 V DC
Maximum continuous voltage U_C	30 V DC
	21 V AC
Rated current	300 mA (45°C)
Operating effective current I_C at U_C	$\leq 10 \mu\text{A}$ (per path)
Residual current I_{PE}	$\leq 20 \mu\text{A}$
Nominal discharge current I_n (8/20) μs (line-earth)	5 kA (per path)
	10 kA (in total)
Pulse discharge current I_{imp} (10/350) μs (line-earth)	1 kA (per path)
	2 kA (in total)
Total discharge current I_{total} (8/20) μs	10 kA
Total discharge current I_{total} (10/350) μs	2 kA
Max. discharge current I_{max} (8/20) μs maximum (line-earth)	5 kA (per path)
	10 kA (in total)
Nominal pulse current I_{an} (10/1000) μs (line-earth)	100 A (per path)
	200 A (in total)
Output voltage limitation at 1 kV/ μs (line-earth) spike	$\leq 40 \text{ V}$
Output voltage limitation at 1 kV/ μs (line-earth) static	$\leq 40 \text{ V}$
Residual voltage at I_n (line-earth)	$\leq 40 \text{ V}$
Residual voltage with I_{an} (10/1000) μs (line-earth)	$\leq 45 \text{ V}$
Voltage protection level U_p (line-earth)	$\leq 80 \text{ V}$ (C2 - 10 kV / 5 kA)
Voltage protection level U_p static (line-earth)	$\leq 40 \text{ V}$ (C2 - 10 kV / 5 kA)
Response time t_A (line-earth)	$\leq 1 \text{ ns}$
Input attenuation aE, asym.	typ. 0.6 dB (500 kHz/50 Ω)
	typ. 0.1 dB (170 kHz/150 Ω)
	typ. 0.1 dB (40 kHz/600 Ω)
Cut-off frequency f_g (3 dB), asym. (PE) in 50 Ohm system	typ. 3 MHz
Cut-off frequency f_g (3 dB), asym. (PE) in 150 Ohm system	typ. 1 MHz
Cut-off frequency f_g (3 dB), asym. (PE) in 600 Ohm system	typ. 250 kHz

Surge protection device - TT-ST-2/2-24DC - 2858881

Technical data

Protective circuit

Capacity (line-earth)	typ. 2 nF
Resistance in series	9.4 Ω ±20 %
Surge protection fault message	none
Max. required back-up fuse	315 mA (T)
Impulse durability (line-earth)	C2 - 10 kV/5 kA
	C3 - 100 A
	D1 - 1 kA

Connection data

Connection method	Spring-cage connection
Connection method IN	Spring-cage
Connection method OUT	Spring-cage
Stripping length	8 mm
Conductor cross section flexible	0.2 mm ² ... 2.5 mm ²
Conductor cross section solid	0.2 mm ² ... 4 mm ²
Conductor cross section AWG	24 ... 14

Standards and Regulations

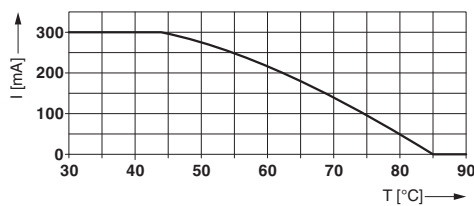
Standards/specifications	IEC 61643-21 2000 + A1:2008, modified
	EN 61643-21 2001 + A1:2009

Environmental Product Compliance

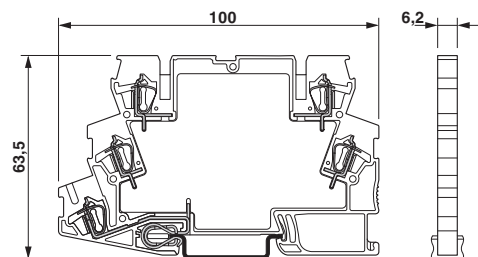
REACH SVHC	Lead 7439-92-1
China RoHS	Environmentally friendly use period: unlimited = EFUP-e
	No hazardous substances above threshold values

Drawings

Diagram

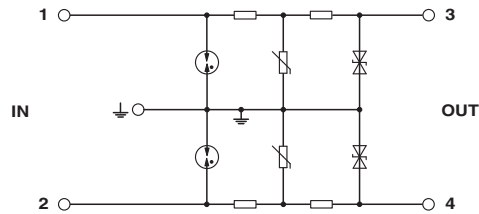


Dimensional drawing



Surge protection device - TT-ST-2/2-24DC - 2858881

Circuit diagram



Approvals

Approvals

Approvals

UL Listed / DNV GL

Ex Approvals

Approval details

UL Listed		http://database.ul.com/cgi-bin/XYV/template/LISEXT/1FRAME/index.htm	FILE E 138168
-----------	--	-------------------------------------------------------------------------------------------------------------------------------------------------------	---------------

DNV GL	http://exchange.dnv.com/tari/	TAE00001N7
--------	---------------------------------------------------------------------------	------------

Phoenix Contact 2018 © - all rights reserved
<http://www.phoenixcontact.com>

PHOENIX CONTACT GmbH & Co. KG
Flachsmarktstr. 8
32825 Blomberg
Germany
Tel. +49 5235 300
Fax +49 5235 3 41200
<http://www.phoenixcontact.com>

X-ON Electronics

Largest Supplier of Electrical and Electronic Components

Click to view similar products for [Pluggable Terminal Blocks](#) category:

Click to view products by [Phoenix Contact](#) manufacturer:

Other Similar products are found below :

[57.510.0053](#) [MC 1.5/ 6-ST-3.5 GY AU](#) [734-104](#) [734-302](#) [8-141-P](#) [8426620000](#) [860505](#) [860810](#) [GBPACX-12](#) [93.731.4953.0](#) [PV05-5,08-K](#)
[PVP02-5,00](#) [PVP03-3,50](#) [PVP04-3,50](#) [PVS02-5,00](#) [1-1986160-3](#) [1377680000](#) [1531000000](#) [1546228-5](#) [ELFH16150](#) [ELFP03110](#)
[ELFP10210](#) [ELFT06250](#) [ELVP03100](#) [1700101](#) [1700410](#) [1700425](#) [1702246](#) [1705229](#) [1710175](#) [1714537](#) [1717806](#) [1719600](#) [1728941](#)
[1734692](#) [1734795](#) [1736036](#) [1740194](#) [1740291](#) [1740628](#) [1740990](#) [1746952](#) [1750207](#) [1752441](#) [1752865](#) [1754115](#) [1754144](#) [1756913](#)
[1760051](#) [1760336](#)