

Surge protection device - C-SAT-BOX - 2880561

Please be informed that the data shown in this PDF Document is generated from our Online Catalog. Please find the complete data in the user's documentation. Our General Terms of Use for Downloads are valid (<http://phoenixcontact.com/download>)




Surge protection for antenna distributors in satellite systems. IN and OUT via F connectors, 5 channels for signals from SAT systems and terrestrial antennas, ground connection on the outside of the housing.

Your advantages

- Wall mounting supported
- Protection for antenna inputs in satellite receiver technology
- Analog and digital SAT signals
- Terrestrial antenna signals
- Use before antenna distributor or multi-switch

Key Commercial Data

Packing unit	1 pc
GTIN	 4 046356 048941
GTIN	4046356048941

Technical data

Dimensions

Height	31.5 mm
Width	144.9 mm
Depth	71.5 mm

Ambient conditions

Ambient temperature (operation)	-25 °C ... 55 °C
Ambient temperature (storage/transport)	-40 °C ... 80 °C
Altitude	≤ 4000 m (amsl (above mean sea level))
Degree of protection	IP40

General

Housing material	Zinc die-cast
Color	silver

Surge protection device - C-SAT-BOX - 2880561

Technical data

General

Overvoltage category	II
Degree of pollution	2
Mounting type	Screw mounting
Type	Housing for surface mounting
Number of positions	5
Direction of action	Line-Shield/Earth Ground

Protective circuit

IEC test classification	B2
	C1
	C2
	C3
	D1
Nominal voltage U_N	14 V DC (vertical)
	18 V DC (horizontal)
Maximum continuous voltage U_C	20 V DC
Rated current	400 mA
Operating effective current I_C at U_C	$\leq 2 \mu\text{A}$ (per channel)
Residual current I_{PE}	$\leq 2 \mu\text{A}$ (per channel)
Nominal discharge current I_n (8/20) μs (line-shield)	2.5 kA
Total discharge current I_{total} (8/20) μs	10 kA
Max. discharge current I_{max} (8/20) μs maximum (line-shield)	2.5 kA
Nominal pulse current I_{an} (10/1000) μs (line-shield)	100 A
Nominal pulse current I_{an} (10/700) μs (Core-Shield)	100 A
Output voltage limitation at 1 kV/ μs (line-shield) static	$\leq 80 \text{ V}$
Voltage protection level U_p (line-shield)	$\leq 500 \text{ V}$ (C2 - 4 kV / 2 kA)
	$\leq 120 \text{ V}$ (C3 - 100 A)
Response time t_A (line-shield)	$\leq 1 \text{ ns}$
Input attenuation aE, asym.	$\leq 1 \text{ dB}$ (5 MHz ... 2,2 GHz / 75 Ω)
	$\leq 3 \text{ dB}$ (5 MHz ... 2,4 GHz / 75 Ω)
Near-end crosstalk attenuation	$\geq 40 \text{ dB}$ (5 MHz ... 2,4 GHz / 75 Ω)
Cut-off frequency f_g (3 dB), asym. (shield) in 75 Ohm system	$> 2.5 \text{ GHz}$
Frequency range	47 MHz ... 2.5 GHz
Inductivity in series	typ. 5 μH (f = 10 kHz)
Resistance per path	3.3 $\Omega \pm 20 \%$
Surge protection fault message	none
Impulse durability (line-shield)	B2 - 4 kV / 100 A
	C1 - 1 kV / 500 A
	C2 - 4 kV/2 kA
	C3 - 100 A
	D1 - 500 A

Surge protection device - C-SAT-BOX - 2880561

Technical data

Protective circuit

Impulse durability (shield-earth)	C2 - 10 kA
	D1 - 5 kA

Connection data

Connection method	F connector
Connection method IN	F connector, female
Connection method OUT	F connector, female

Connection, equipotential bonding

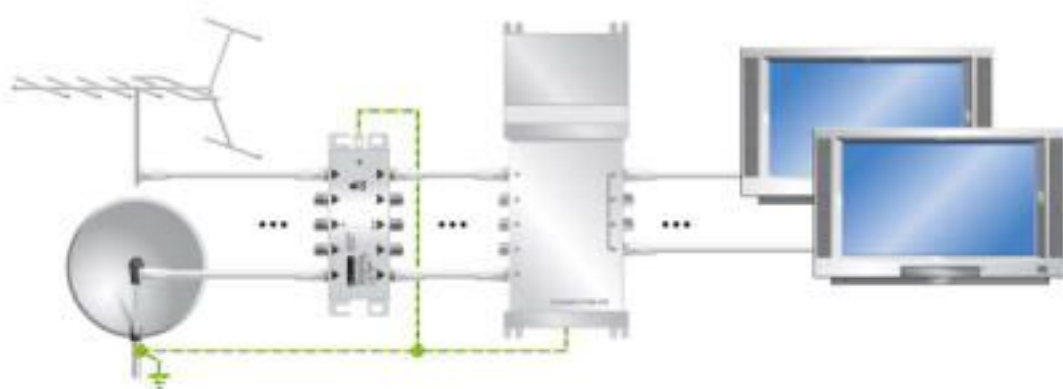
Connection method	Screw connection
-------------------	------------------

Standards and Regulations

Standards/specifications	IEC 61643-21 2000 + A1:2008 + A2:2012
	EN 61643-21 2013
	EN 50083-2 CLASS-A

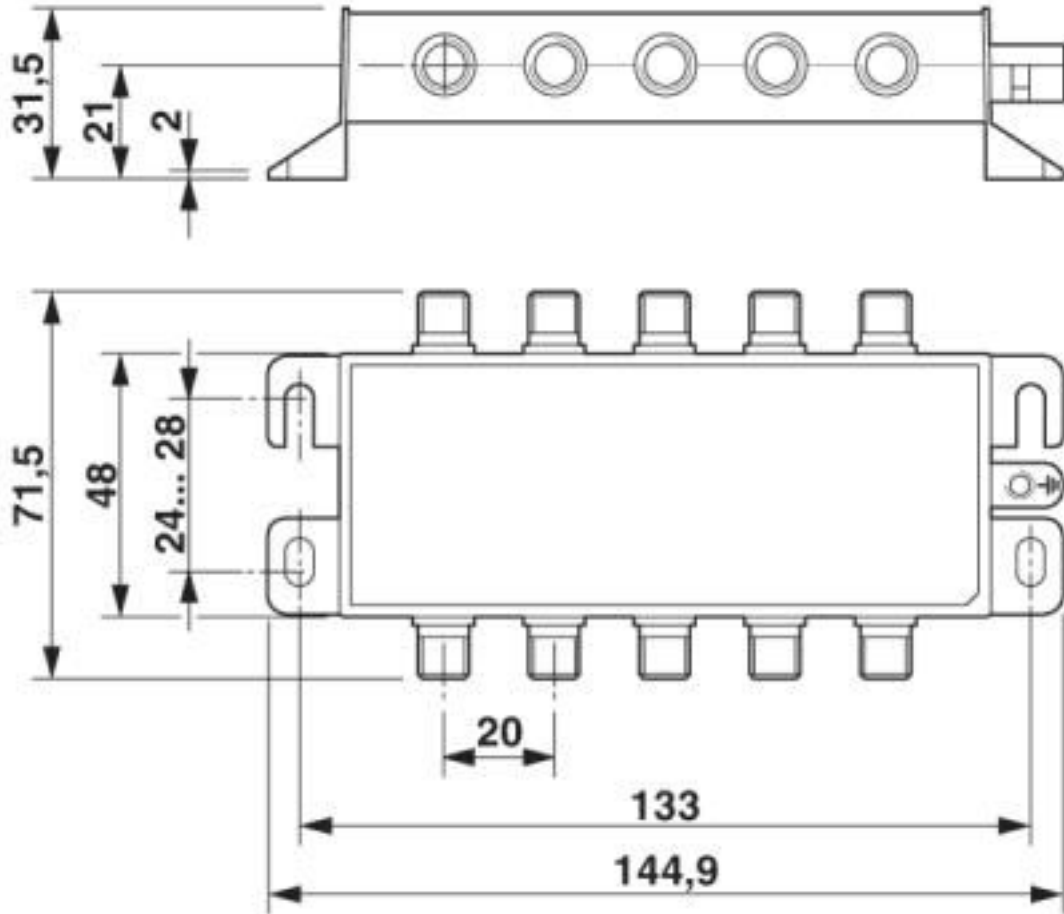
Drawings

Application drawing



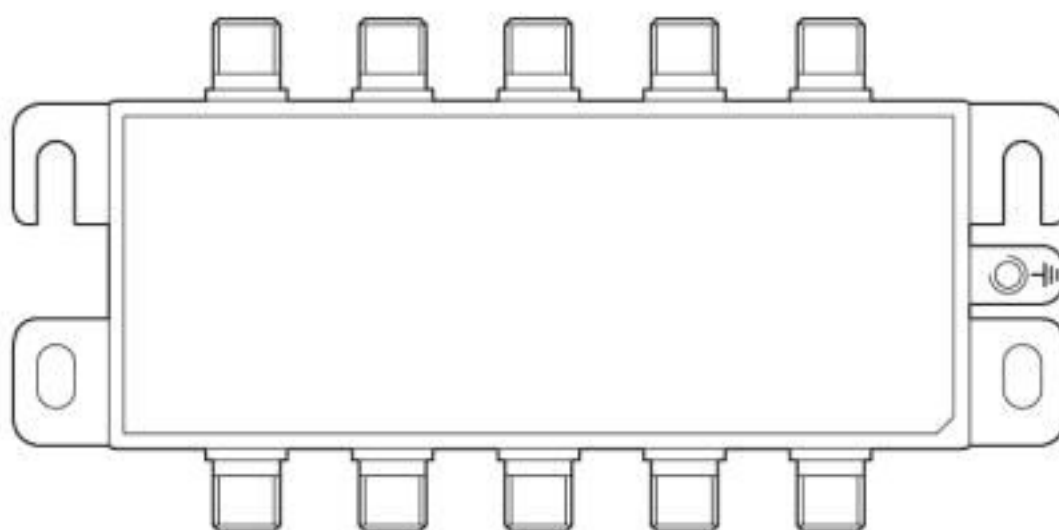
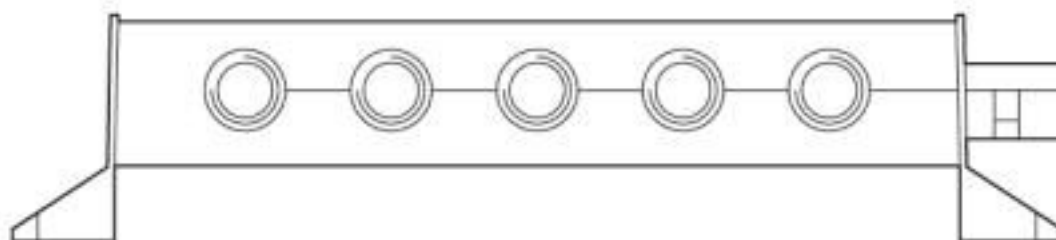
Surge protection device - C-SAT-BOX - 2880561

Dimensional drawing

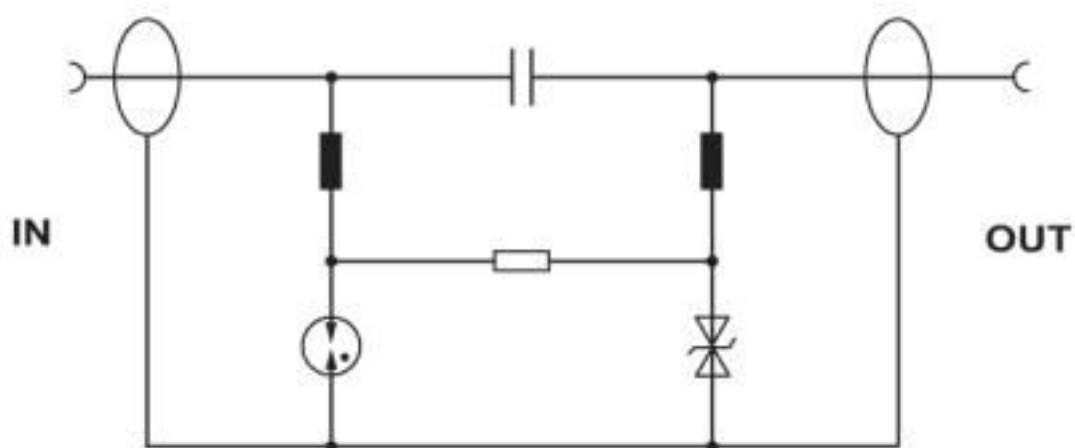


Surge protection device - C-SAT-BOX - 2880561

Product drawing



Circuit diagram



Surge protection device - C-SAT-BOX - 2880561

Classifications

eCl@ss

eCl@ss 10.0.1	27130807
eCl@ss 4.0	27130800
eCl@ss 4.1	27130800
eCl@ss 5.0	27130800
eCl@ss 5.1	27130800
eCl@ss 6.0	27130800
eCl@ss 7.0	27130807
eCl@ss 8.0	27130807
eCl@ss 9.0	27130807

ETIM

ETIM 2.0	EC000943
ETIM 3.0	EC000943
ETIM 4.0	EC000943
ETIM 5.0	EC000943
ETIM 6.0	EC000943
ETIM 7.0	EC000943

UNSPSC

UNSPSC 6.01	30212010
UNSPSC 7.0901	39121610
UNSPSC 11	39121610
UNSPSC 12.01	39121610
UNSPSC 13.2	39121620
UNSPSC 18.0	39121620
UNSPSC 19.0	39121620
UNSPSC 20.0	39121620
UNSPSC 21.0	39121620

Approvals

Approvals

Approvals

EAC

Ex Approvals

Approval details

Surge protection device - C-SAT-BOX - 2880561

Approvals

EAC



RU C-
DE.*09.B.00169

Accessories

Accessories

Coaxial adapter

Adapter - ADAPTER KOAX TYP F - 2880972



F-connector-to-adapter, plug-to-plug, can be plugged without thread.

Coaxial cable

Cable - KBL-SAT/20 - 2880985



Connecting cable 20 cm with F connector, male connector.

Phoenix Contact 2020 © - all rights reserved
<http://www.phoenixcontact.com>

PHOENIX CONTACT GmbH & Co. KG
Flachsmarktstr. 8
32825 Blomberg
Germany
Tel. +49 5235 300
Fax +49 5235 3 41200
<http://www.phoenixcontact.com>

X-ON Electronics

Largest Supplier of Electrical and Electronic Components

Click to view similar products for [Surge Suppressors](#) category:

Click to view products by [Phoenix Contact](#) manufacturer:

Other Similar products are found below :

[GUS1](#) [GUS12](#) [BSPM1A600D600LVR](#) [2800521](#) [29-2053](#) [GUS11](#) [GUS2](#) [GUS3](#) [GUS4](#) [30460](#) [SRA64C060X](#) [PC642C015](#) [1810-15-A3](#)
[2713175](#) [4B06B-EC1-150LF](#) [SRA6LC](#) [BPMA75D100LV](#) [CX06M](#) [CCTV1](#) [GUS13](#) [GUS14](#) [GUS5](#) [GUS6](#) [VAL-MS 320/3+0-FM](#) [VAL-US-](#)
[120/40/1+1-FM](#) [VAL-US-120/65/1+1-FM](#) [VAL-US-480D/30/3+0-FM](#) [VAL-US-120/40/1+0-FM](#) [STCHSP121BT1RU](#) [LP-BFDN-CW](#) [LP-](#)
[STRL-NFF](#) [LP-STRL-DFE](#) [GUS22](#) [0804111](#) [5053609](#) [5053201](#) [SPD2-150-1P0](#) [SPD2-550-1P0](#) [6720005416](#) [6720005417](#) [1-2191595-2](#)
[STC-CAT6-P0E-I](#) [SPD2-350-1P0](#) [FLT-CP-350-ST](#) [TTC-6P-3-HF-F-M-12DC-UT-I](#) [SMTPA200](#) [2800989](#) [2906776](#) [2906810](#) [2906847](#)