

Electronic housing - CM175-LG/H 35/BO/DB/GH BK - 2941507

Please be informed that the data shown in this PDF Document is generated from our Online Catalog. Please find the complete data in the user's documentation. Our General Terms of Use for Downloads are valid (<http://phoenixcontact.com/download>)




Component housing, length: 125 mm, with vents, Complete housing, cross connection: without bus connector, color: black, width: 175 mm, height: 155 mm, number of positions cross connector: not relevant

Your advantages

- Flexible accommodation of different connection elements (from high-position connectors to electronic PCBs)
- Rugged housing technology
- Easy snap-on mounting on symmetrical DIN rails according to EN 60715
- Shock and contamination-proof accommodation of electronic components

Key Commercial Data

Packing unit	5 pc
GTIN	 4 017918 080471
GTIN	4017918080471

Technical data

Item properties

Brief article description	Electronic housing
Type	CM175-LG/H 35/BO/DB/GH BK
Order No.	2941507
Housing type	Component housing
Type	Complete housing

Dimensions

Caption	Dimension A: 155 mm; dimension B: 125 mm; dimension C: 175 mm
Width [w]	175 mm
Depth [d]	125 mm
Length [l]	125 mm

Material data

Electronic housing - CM175-LG/H 35/BO/DB/GH BK - 2941507

Technical data

Material data

Housing material	Polycarbonate fiber reinforced
------------------	--------------------------------

Ambient conditions

Ambient temperature (operation)	-40 °C ... 105 °C (depending on power dissipation)
---------------------------------	--

Packaging information

Pieces per package	5
Denomination packing units	Pcs.

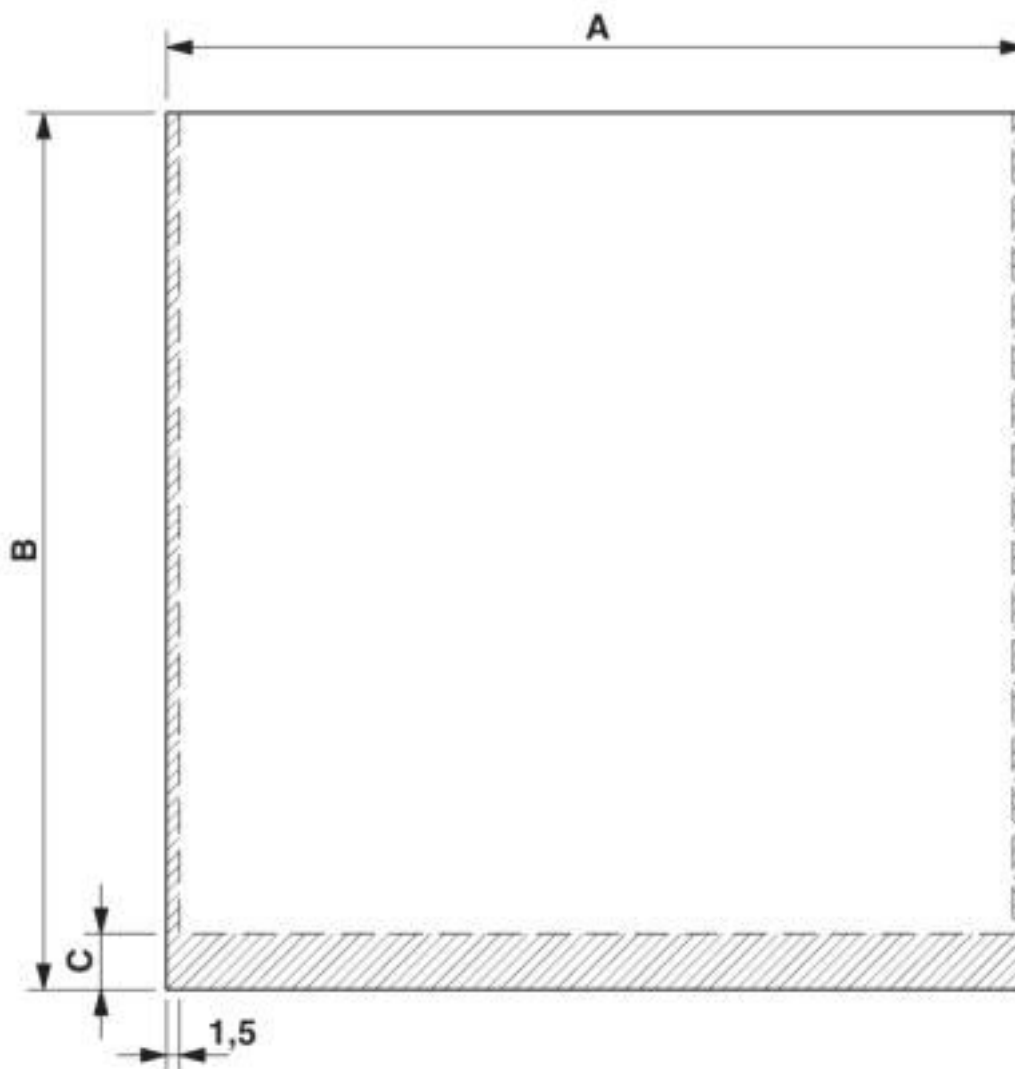
Environmental Product Compliance

China RoHS	Environmentally friendly use period: unlimited = EFUP-e
	No hazardous substances above threshold values

Drawings

Electronic housing - CM175-LG/H 35/BO/DB/GH BK - 2941507

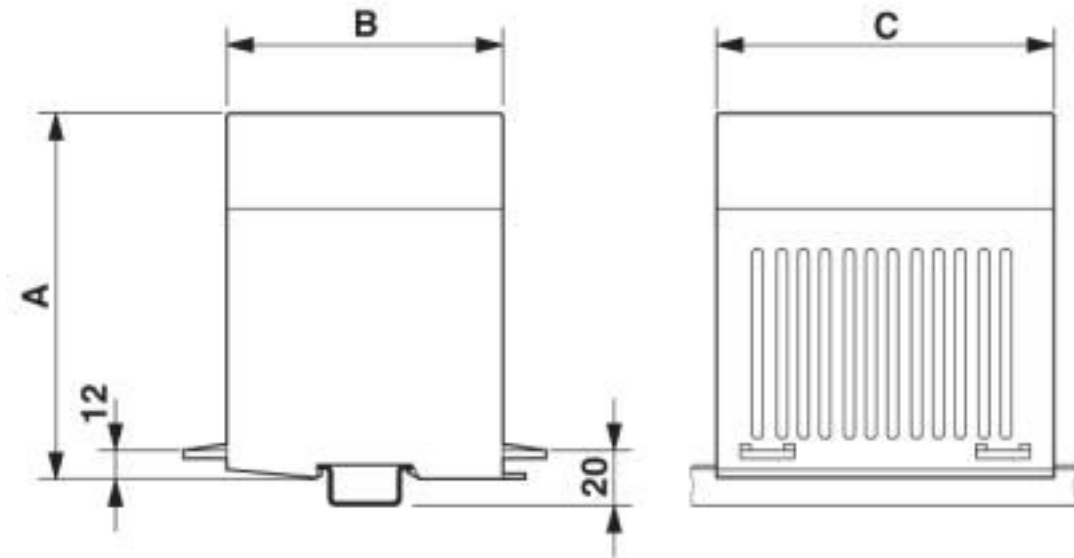
Dimensional drawing



PCB 1, 7: Dimension A: 165.5 mm; B: 131.5 mm; C: 0 mm
PCB 8, 10, 11, 13: Dimension A: 115.5 mm; B: 139.0 mm; C: 0 mm

Electronic housing - CM175-LG/H 35/BO/DB/GH BK - 2941507

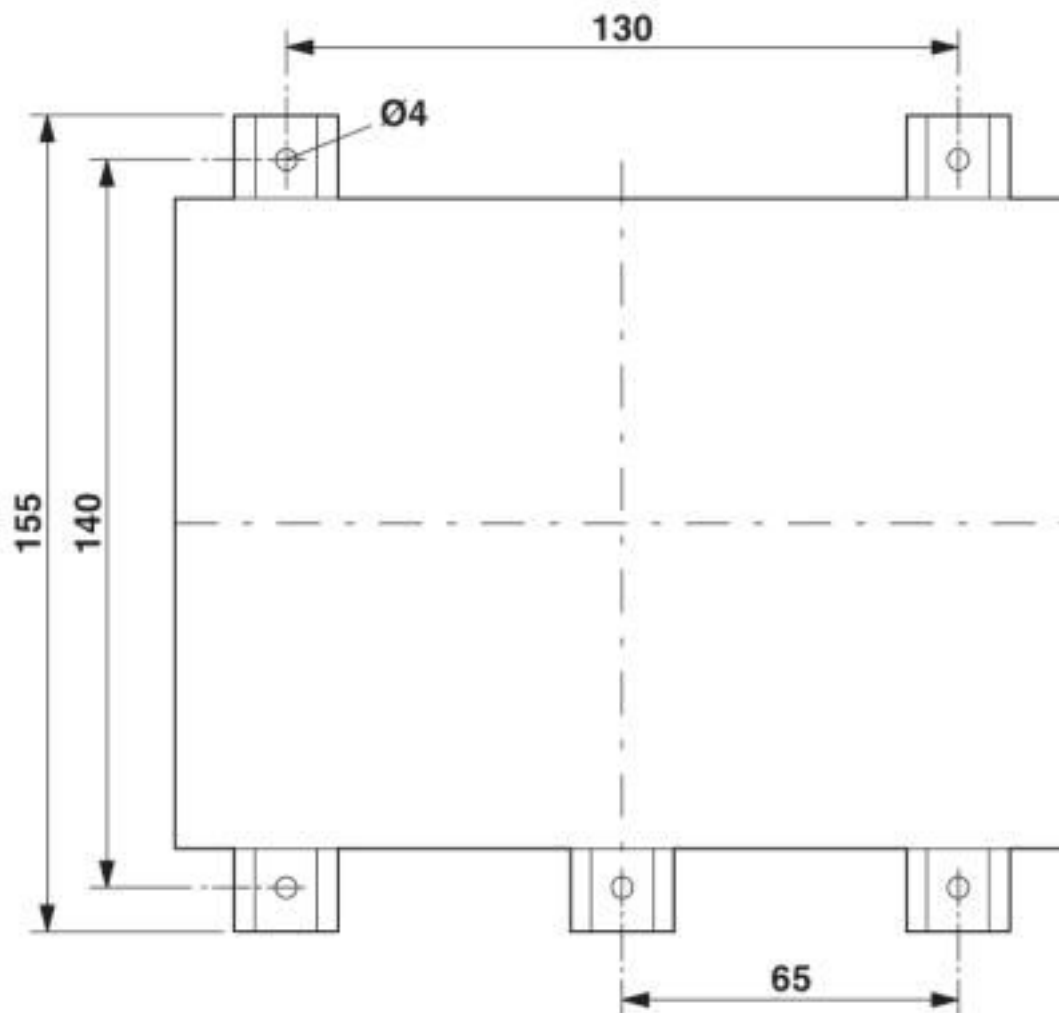
Dimensional drawing



Dimension A: 155 mm; dimension B: 125 mm; dimension C: 175 mm

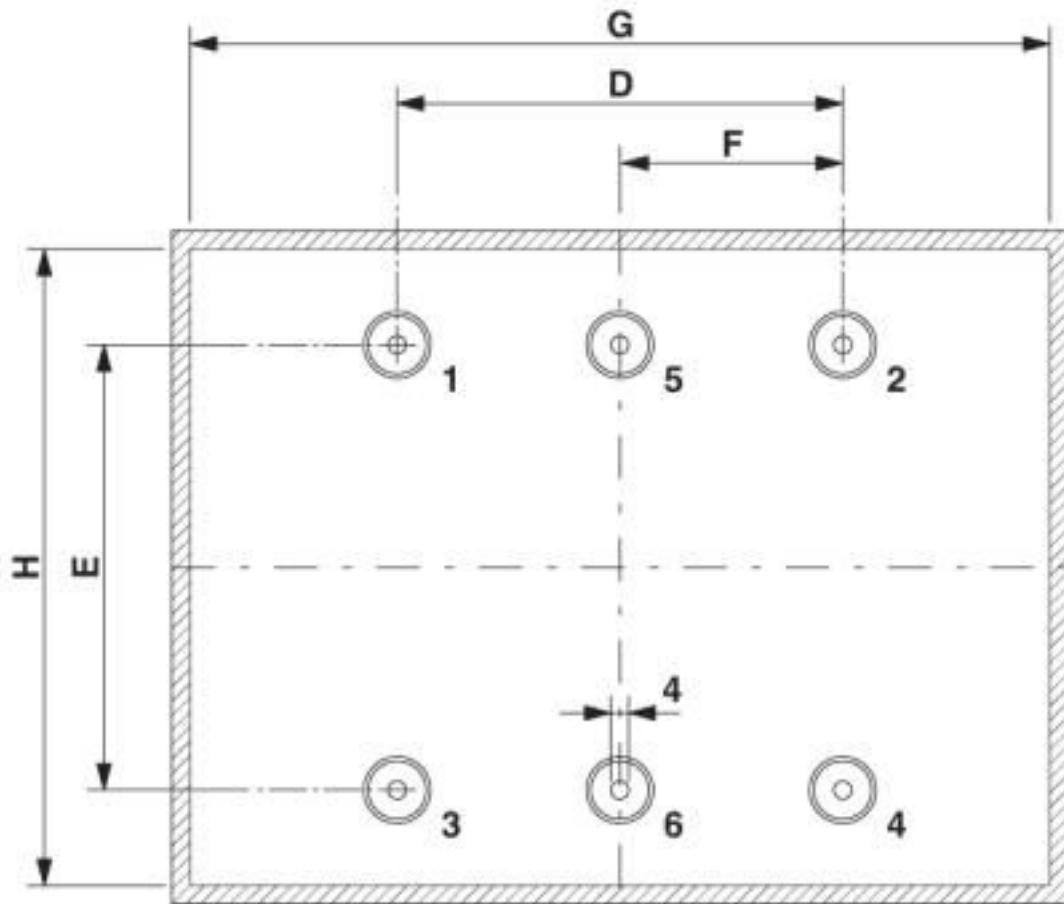
Electronic housing - CM175-LG/H 35/BO/DB/GH BK - 2941507

Dimensional drawing



Electronic housing - CM175-LG/H 35/BO/DB/GH BK - 2941507

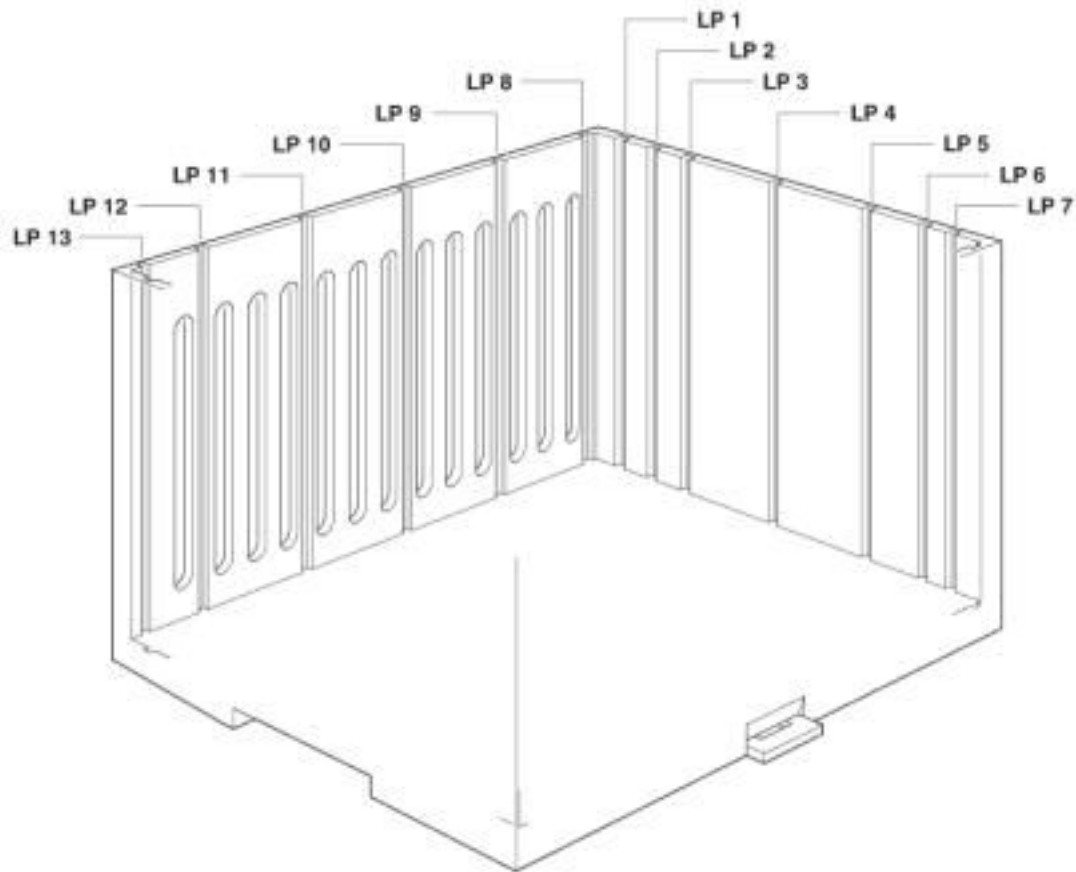
Dimensional drawing



Dimension D: 100.0 mm; E: 80.0 mm; G: 160.0 mm; H: 112.0 mm
Spacer pins 1 - 4: Height 25 mm; \varnothing 4 mm

Electronic housing - CM175-LG/H 35/BO/DB/GH BK - 2941507

Schematic diagram



Classifications

eCl@ss

eCl@ss 10.0.1	27182702
eCl@ss 4.0	27180400
eCl@ss 4.1	27180400
eCl@ss 5.0	27180500
eCl@ss 5.1	27180500
eCl@ss 6.0	27180800
eCl@ss 7.0	27182702
eCl@ss 8.0	27182702
eCl@ss 9.0	27182702

ETIM

ETIM 2.0	EC001031
ETIM 3.0	EC001031
ETIM 4.0	EC001031
ETIM 5.0	EC001031
ETIM 6.0	EC001031

Electronic housing - CM175-LG/H 35/BO/DB/GH BK - 2941507

Classifications

ETIM

ETIM 7.0	EC001031
----------	----------

UNSPSC

UNSPSC 6.01	31261501
UNSPSC 7.0901	31261501
UNSPSC 11	31261501
UNSPSC 12.01	31261501
UNSPSC 13.2	31261501
UNSPSC 18.0	31261501
UNSPSC 19.0	31261501
UNSPSC 20.0	31261501
UNSPSC 21.0	31261501

Approvals

Approvals

Approvals

EAC

Ex Approvals

Approval details

EAC		B.01742
-----	---	---------

Phoenix Contact 2020 © - all rights reserved
<http://www.phoenixcontact.com>

PHOENIX CONTACT GmbH & Co. KG
Flachmarktstr. 8
32825 Blomberg
Germany
Tel. +49 5235 300
Fax +49 5235 3 41200
<http://www.phoenixcontact.com>

X-ON Electronics

Largest Supplier of Electrical and Electronic Components

Click to view similar products for [Terminal Block Tools & Accessories](#) category:

Click to view products by [Phoenix Contact](#) manufacturer:

Other Similar products are found below :

[00171430102](#) [00171420102](#) [600HL](#) [600RJ-07](#) [600RJ-11](#) [600RJ-14](#) [600RJS-10](#) [600RJS-12](#) [600RJS-15](#) [600RJS-21](#) [601RJ-09](#) [602SP](#) [602Z](#)
[604J](#) [CSTSPC1-2](#) [7B941-7](#) [88943-2100](#) [QC102](#) [1437403-6](#) [1437403-9](#) [1437403-8](#) [1453128-1](#) [147832-1](#) [EC0037-000](#) [MT2/H--](#) [MT6/H-N](#)
[MT6/V-GRND](#) [MT8/H-51-60](#) [BC2-12](#) [BCC-1-8/10](#) [EP2.5/4UN/BG](#) [1707755](#) [1735590](#) [1755480](#) [1789281](#) [1840227](#) [1840230](#) [2-1437402-1](#)
[JA2-03](#) [JB1-03/J](#) [JB2-04](#) [JB2-05](#) [JB2-07](#) [JB2-09/J](#) [PARALLELJUMPERLINK](#) [JS601](#) [2204082](#) [2302463](#) [2305949](#) [8PCV-BUSHING](#)