

Electronic housing - CM200-LG/H 55/BO/DB/GH BK - 2941853

Please be informed that the data shown in this PDF Document is generated from our Online Catalog. Please find the complete data in the user's documentation. Our General Terms of Use for Downloads are valid (<http://phoenixcontact.com/download>)



Complete housing, Complete housing, with vents, width: 200 mm, depth: 149 mm, cross connection: without bus connector, number of positions cross connector: not relevant, color: black

Your advantages

- Rugged housing technology
- Easy snap-on mounting on symmetrical DIN rails according to EN 60715
- Flexible accommodation of different connection elements (from high-position connectors to electronic PCBs)
- Shock and contamination-proof accommodation of electronic components

Key Commercial Data

Packing unit	1 pc
GTIN	
GTIN	4017918107703

Technical data

Item properties

Brief article description	Electronic housing
Type	CM200-LG/H 55/BO/DB/GH BK
Order No.	2941853
Housing type	Complete housing
Type	Complete housing

Dimensions

Caption	Dimension A: 165 mm; dimension B: 149 mm; dimension C: 200 mm
Width [w]	200 mm
Depth [d]	149 mm

Material data

Housing material	Polycarbonate fiber reinforced
------------------	--------------------------------

Electronic housing - CM200-LG/H 55/BO/DB/GH BK - 2941853

Technical data

Material data

Color (RAL)	black
Flammability rating according to UL 94	V0

Ambient conditions

Ambient temperature (operation)	-40 °C ... 105 °C (depending on power dissipation)
---------------------------------	--

Packaging information

Pieces per package	1
Denomination packing units	Pcs.

Standards and regulations

Flammability rating according to UL 94	V0
--	----

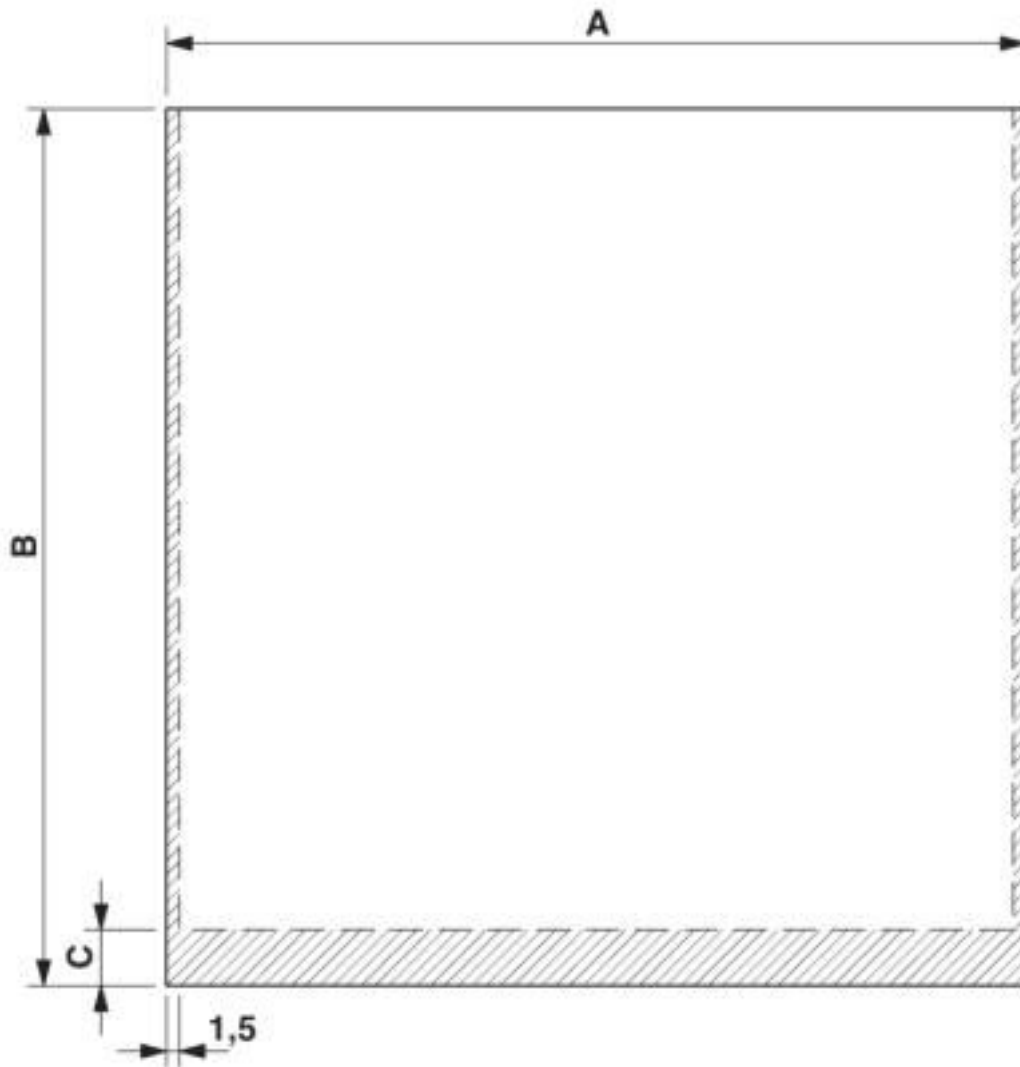
Environmental Product Compliance

China RoHS	Environmentally friendly use period: unlimited = EFUP-e
	No hazardous substances above threshold values

Drawings

Electronic housing - CM200-LG/H 55/BO/DB/GH BK - 2941853

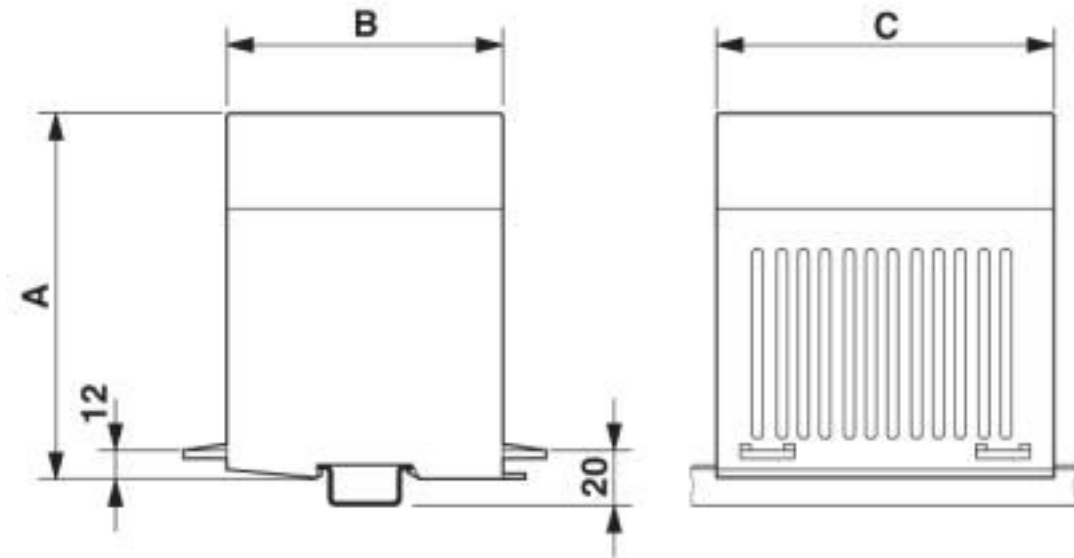
Dimensional drawing



PCB 8, 13: Dimension A: 141.0 mm; B: 140.5 mm; C: 0 mm

Electronic housing - CM200-LG/H 55/BO/DB/GH BK - 2941853

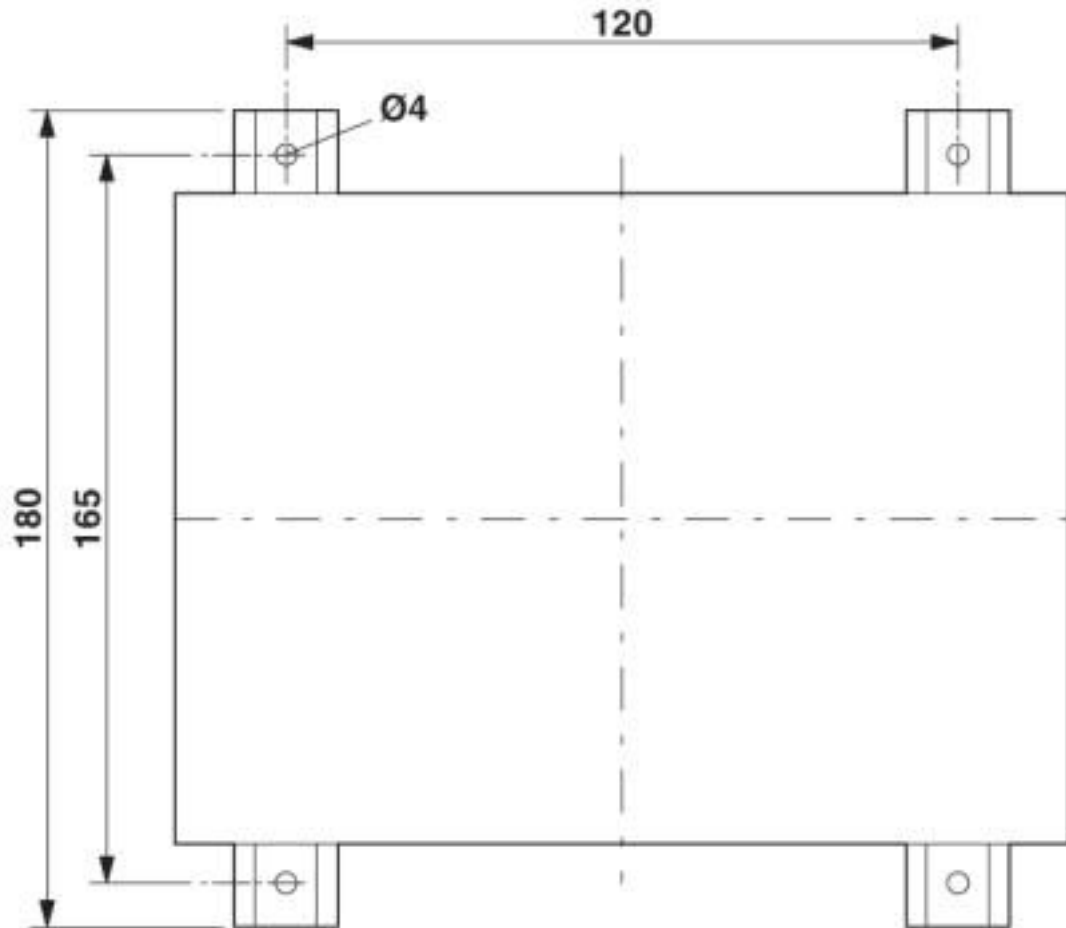
Dimensional drawing



Dimension A: 165 mm; dimension B: 149 mm; dimension C: 200 mm

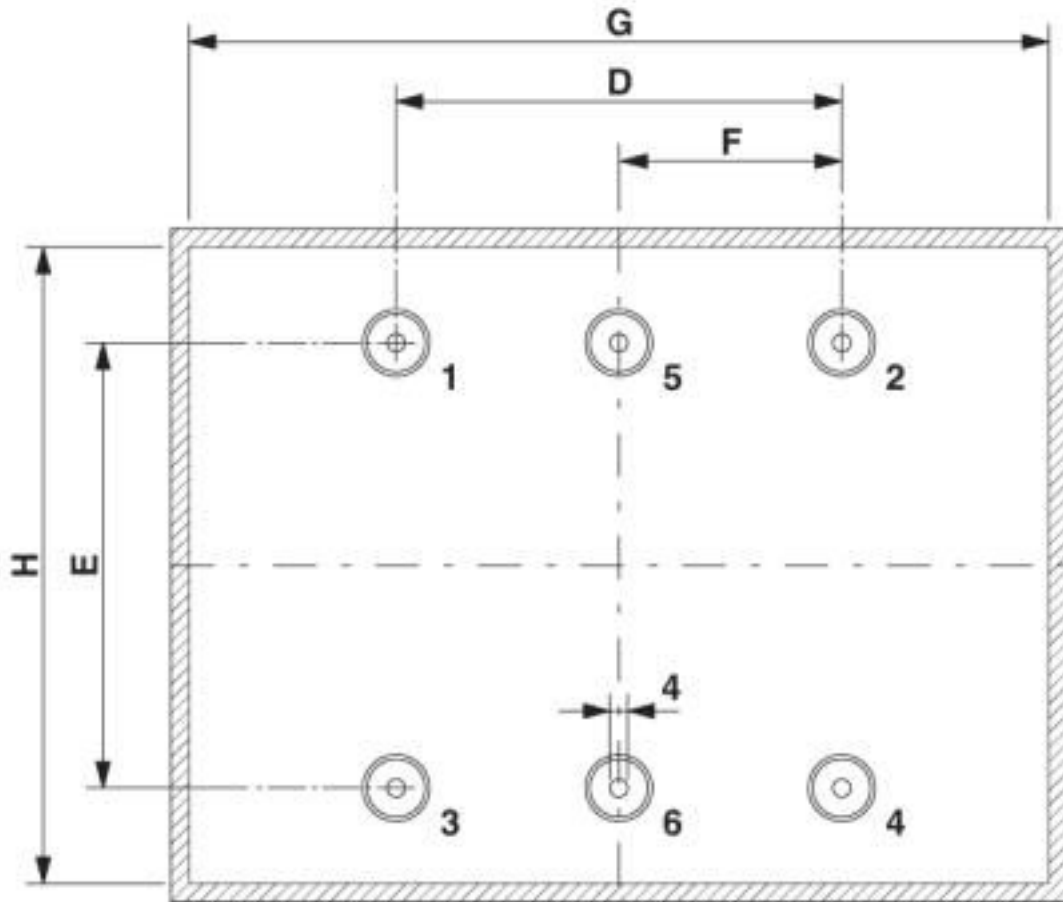
Electronic housing - CM200-LG/H 55/BO/DB/GH BK - 2941853

Dimensional drawing



Electronic housing - CM200-LG/H 55/BO/DB/GH BK - 2941853

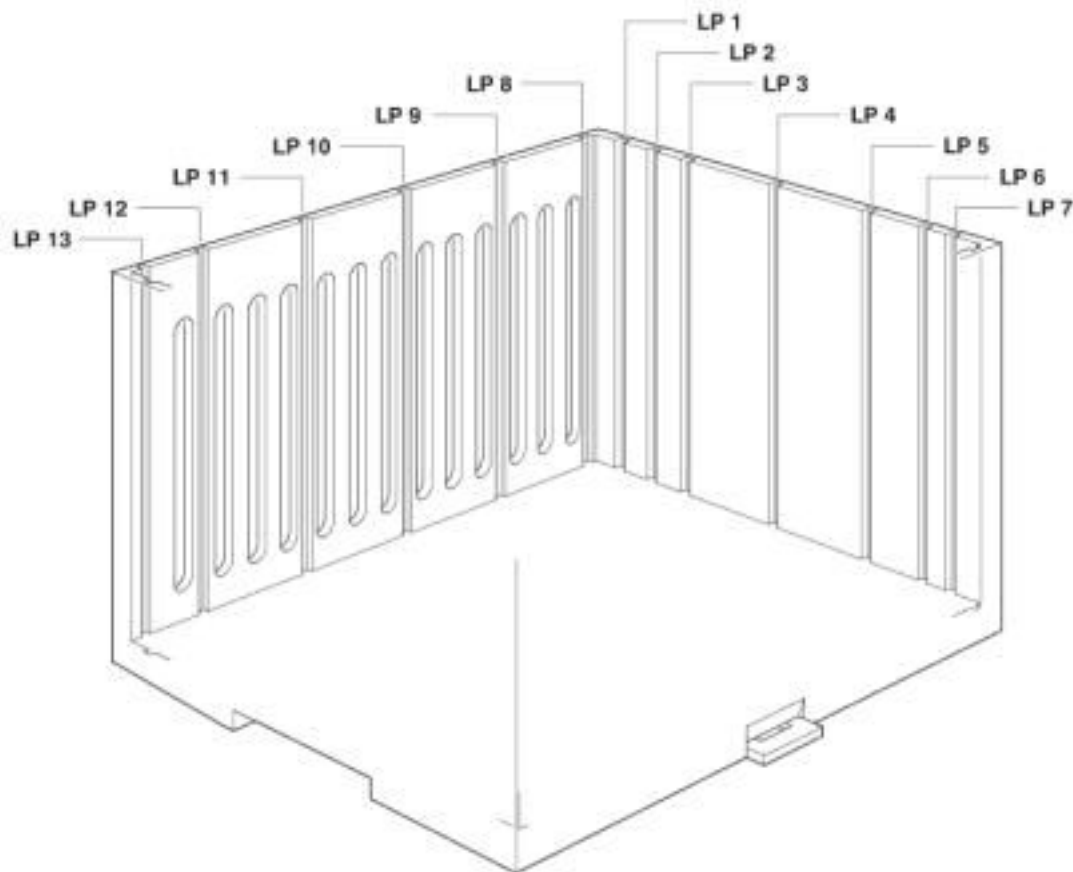
Dimensional drawing



Dimension D: 100.0 mm; E: 100.0 mm; F: 50.0; G: 190.0 mm; H: 138.0 mm
Spacer pins 1 - 6: Height 20 mm; \varnothing 4 mm

Electronic housing - CM200-LG/H 55/BO/DB/GH BK - 2941853

Schematic diagram



Classifications

eCl@ss

eCl@ss 10.0.1	27182702
eCl@ss 4.0	27180400
eCl@ss 4.1	27180400
eCl@ss 5.0	27180500
eCl@ss 5.1	27180500
eCl@ss 6.0	27180800
eCl@ss 7.0	27182702
eCl@ss 8.0	27182702
eCl@ss 9.0	27182702

ETIM

ETIM 2.0	EC001031
ETIM 3.0	EC001031
ETIM 4.0	EC001031
ETIM 5.0	EC001031
ETIM 6.0	EC001031

Electronic housing - CM200-LG/H 55/BO/DB/GH BK - 2941853

Classifications

ETIM

ETIM 7.0	EC001031
----------	----------

UNSPSC

UNSPSC 6.01	31261501
UNSPSC 7.0901	31261501
UNSPSC 11	31261501
UNSPSC 12.01	31261501
UNSPSC 13.2	31261501
UNSPSC 18.0	31261501
UNSPSC 19.0	31261501
UNSPSC 20.0	31261501
UNSPSC 21.0	31261501

Approvals

Approvals

Approvals

EAC

Ex Approvals

Approval details

EAC		B.01742
-----	---	---------

Phoenix Contact 2020 © - all rights reserved
<http://www.phoenixcontact.com>

PHOENIX CONTACT GmbH & Co. KG
Flachsmarktstr. 8
32825 Blomberg
Germany
Tel. +49 5235 300
Fax +49 5235 3 41200
<http://www.phoenixcontact.com>

X-ON Electronics

Largest Supplier of Electrical and Electronic Components

Click to view similar products for [Terminal Block Tools & Accessories](#) category:

Click to view products by [Phoenix Contact](#) manufacturer:

Other Similar products are found below :

[00171430102](#) [00171420102](#) [600HL](#) [600RJ-07](#) [600RJ-11](#) [600RJ-14](#) [600RJS-10](#) [600RJS-12](#) [600RJS-15](#) [600RJS-21](#) [601RJ-09](#) [602SP](#) [602Z](#)
[604J](#) [CSTSPC1-2](#) [7B941-7](#) [88943-2100](#) [QC102](#) [1437403-6](#) [1437403-9](#) [1437403-8](#) [1453128-1](#) [147832-1](#) [EC0037-000](#) [MT2/H--](#) [MT6/H-N](#)
[MT6/V-GRND](#) [MT8/H-51-60](#) [BC2-12](#) [BCC-1-8/10](#) [EP2.5/4UN/BG](#) [1707755](#) [1735590](#) [1755480](#) [1789281](#) [1840227](#) [1840230](#) [2-1437402-1](#)
[JA2-03](#) [JB1-03/J](#) [JB2-04](#) [JB2-05](#) [JB2-07](#) [JB2-09/J](#) [PARALLELJUMPERLINK](#) [JS601](#) [2204082](#) [2302463](#) [2305949](#) [8PCV-BUSHING](#)