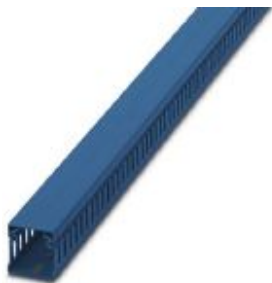


Cable duct - CD-HF 40X40 BU - 3240590

Please be informed that the data shown in this PDF Document is generated from our Online Catalog. Please find the complete data in the user's documentation. Our General Terms of Use for Downloads are valid (<http://phoenixcontact.com/download>)



Cable duct for installation and mounting in control cabinets, blue, halogen-free, comprising upper part and mounting base, width: 40 mm, height: 40 mm, length: 2000 mm



Key Commercial Data

Packing unit	25 pc
Minimum order quantity	25 pc
GTIN	
GTIN	4046356630085

Technical data

Dimensions

Length (b)	2000 mm
Width (a)	40 mm
Height (c)	40 mm

Ambient conditions

Ambient temperature (operation)	-40 °C ... 90 °C
---------------------------------	------------------

General

Color	blue
Components	halogen-free
Flammability rating according to UL 94	V0
Material	PC/ABS
Nominal cross section	749 mm ²

Standards and Regulations

Connection in acc. with standard	CSA
Flammability rating according to UL 94	V0

Environmental Product Compliance

Cable duct - CD-HF 40X40 BU - 3240590

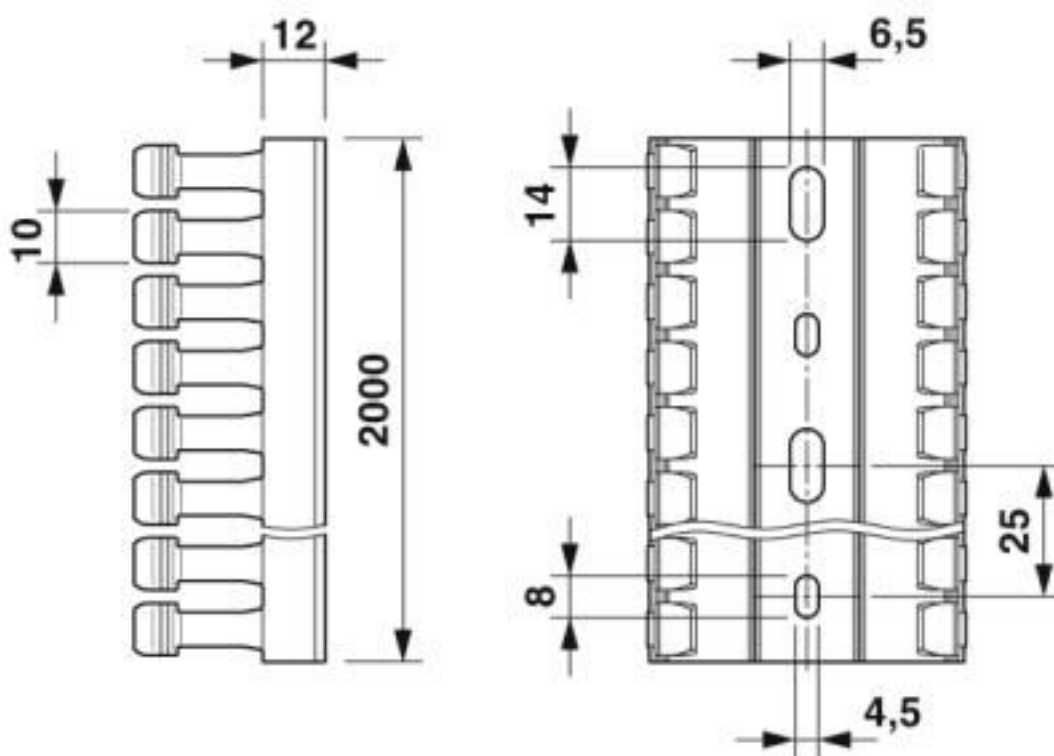
Technical data

Environmental Product Compliance

China RoHS	Environmentally friendly use period: unlimited = EFUP-e
	No hazardous substances above threshold values

Drawings

Dimensional drawing



Base perforation according to DIN EN 50085

Classifications

eCl@ss

eCl@ss 10.0.1	27400703
eCl@ss 4.0	27140602
eCl@ss 4.1	27140602
eCl@ss 5.0	27140602
eCl@ss 5.1	27140602
eCl@ss 6.0	27400700
eCl@ss 7.0	27400703
eCl@ss 8.0	27400703
eCl@ss 9.0	27400703

Cable duct - CD-HF 40X40 BU - 3240590

Classifications

ETIM

ETIM 4.0	EC000012
ETIM 5.0	EC000012
ETIM 6.0	EC000012
ETIM 7.0	EC000012

UNSPSC

UNSPSC 6.01	30101815
UNSPSC 7.0901	30101815
UNSPSC 11	30101815
UNSPSC 12.01	30101815
UNSPSC 13.2	39131712
UNSPSC 18.0	39131712
UNSPSC 19.0	39131712
UNSPSC 20.0	39131712
UNSPSC 21.0	39131712

Approvals

Approvals

Approvals

CSA / VDE Zeichengenehmigung

Ex Approvals

Approval details

CSA		http://www.csagroup.org/services-industries/product-listing/	248269
-----	--	---	--------

VDE Zeichengenehmigung		http://www2.vde.com/de/Institut/Online-Service/VDE-gepruefteProdukte/Seiten/Online-Suche.aspx	40028972
------------------------	--	---	----------

Accessories

Accessories

Filler plug

Cable duct - CD-HF 40X40 BU - 3240590

Accessories

Fastening clip - RVT-PA 4 - 3240498



Plastic body-bound rivet, for hole diameter of 4 mm and a material thickness of 1.5 ... 6 mm

Fastening clip - RVT-PA 6 - 3240499



Plastic body-bound rivet, for hole diameter of 6 mm and a material thickness of 1.5 ... 6 mm

Riveting tools

Tool - UNIFOX-RVT P 4 - 1212478



Rivet setting tool, for use with RVT-PA 4 plastic body-bound rivets

Tool - UNIFOX-RVT P 6 - 1212509



Rivet setting tool, for use with RVT-PA 6 plastic body-bound rivets

Phoenix Contact 2020 © - all rights reserved
<http://www.phoenixcontact.com>

PHOENIX CONTACT GmbH & Co. KG
Flachsmarktstr. 8
32825 Blomberg
Germany
Tel. +49 5235 300
Fax +49 5235 3 41200
<http://www.phoenixcontact.com>

X-ON Electronics

Largest Supplier of Electrical and Electronic Components

Click to view similar products for [Wire Ducting & Raceways](#) category:

Click to view products by [Phoenix Contact](#) manufacturer:

Other Similar products are found below :

[800A-LB](#) [801I-LSP](#) [802A-ECSP](#) [802I-ICSP](#) [923223-000](#) [PRAF6WH-X](#) [A0405538](#) [1301150342](#) [1301160034](#) [1301170070](#) [1301180011](#)
[1301230083](#) [1301230153](#) [1301240273](#) [1301250006](#) [1302261238](#) [1302261321](#) [1302262552](#) [1302263103](#) [1302263178](#) [1302263259](#)
[1302263816](#) [1302263860](#) [1302264375](#) [1302264390](#) [1301150343](#) [1301160030](#) [1301170050](#) [1301170051](#) [1301170061](#) [1301180013](#)
[1301230086](#) [1301230130](#) [1301240054](#) [1302260055](#) [1302260376](#) [1302261343](#) [1302261344](#) [1302262674](#) [1302263095](#) [1302263166](#)
[1302263209](#) [1302263513](#) [1302263851](#) [1302263870](#) [1302264137](#) [1302264218](#) [DD1/J](#) [AX101472](#) [AX102007](#)