

## Base strip - MSTB 2,5/ 3-G - 1754452

Please be informed that the data shown in this PDF Document is generated from our Online Catalog. Please find the complete data in the user's documentation. Our General Terms of Use for Downloads are valid (<http://phoenixcontact.com/download>)

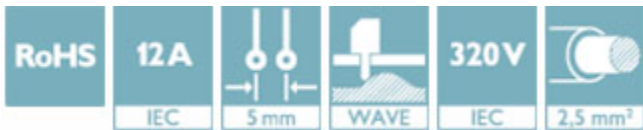
Header, nominal current: 12 A, rated voltage (III/2): 320 V, number of positions: 3, pitch: 5 mm, Color: green, contact surface: Tin, mounting: Wave soldering




The figure shows a 10-position version of the product

### Why buy this product

- ✓ Maximum flexibility when it comes to device design – one header for connectors with different connection technologies
- ✓ Easy PCB replacement thanks to plug-in modules
- ✓ Well-known mounting principle allows worldwide use
- ✓ Items that can be aligned in various pitches support flexible and space-saving PCB assembly



### Key Commercial Data

Packing unit	1 STK
GTIN	 4 017918 028626
GTIN	4017918028626
Weight per Piece (excluding packing)	5.200 g
Custom tariff number	85366930
Country of origin	Germany

### Technical data

#### Dimensions

Length [ l ]	12 mm
Pitch	5 mm
Dimension a	10 mm
Width [ w ]	15 mm
Constructional height	8.6 mm

## Base strip - MSTB 2,5/ 3-G - 1754452

### Technical data

#### Dimensions

Height [ h ]	12.1 mm
Length of the solder pin	3.5 mm
Pin dimensions	1 x 1 mm
Hole diameter	1.4 mm

#### General

Range of articles	MSTB 2,5/..-G
Insulating material group	I
Rated surge voltage (III/3)	4 kV
Rated surge voltage (III/2)	4 kV
Rated surge voltage (II/2)	4 kV
Rated voltage (III/3)	250 V
Rated voltage (III/2)	320 V
Rated voltage (II/2)	400 V
Connection in acc. with standard	EN-VDE
Nominal current $I_N$	12 A
Maximum load current	12 A
Insulating material	PA
Flammability rating according to UL 94	V0
Color	green
Number of positions	3

#### Standards and Regulations

Connection in acc. with standard	EN-VDE
	CSA
Flammability rating according to UL 94	V0

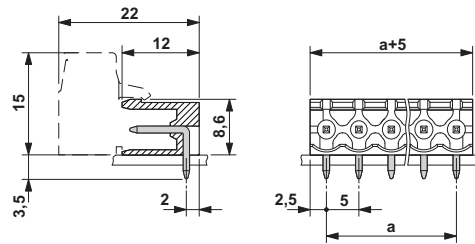
#### Environmental Product Compliance

China RoHS	Environmentally friendly use period: unlimited = EFUP-e
	No hazardous substances above threshold values

### Drawings

# Base strip - MSTB 2,5/ 3-G - 1754452

Dimensional drawing



## Classifications

### eCl@ss

eCl@ss 4.0	272607xx
eCl@ss 4.1	27260701
eCl@ss 5.0	27260701
eCl@ss 5.1	27260701
eCl@ss 6.0	27260704
eCl@ss 7.0	27440402
eCl@ss 8.0	27440402
eCl@ss 9.0	27440402

### ETIM

ETIM 3.0	EC001121
ETIM 4.0	EC002637
ETIM 5.0	EC002637
ETIM 6.0	EC002637

### UNSPSC

UNSPSC 6.01	30211810
UNSPSC 7.0901	39121409
UNSPSC 11	39121409
UNSPSC 12.01	39121409
UNSPSC 13.2	39121409

## Approvals

### Approvals

#### Approvals


CSA / VDE Gutachten mit Fertigungsüberwachung / IECCEB Scheme / cULus Recognized / EAC


## Base strip - MSTB 2,5/ 3-G - 1754452


### Approvals


Ex Approvals

#### Approval details

CSA		<a href="http://www.csagroup.org/services/testing-and-certification/certified-product-listing/">http://www.csagroup.org/services/testing-and-certification/certified-product-listing/</a>	13631
		B	D
Nominal current I <sub>N</sub>		10 A	10 A
Nominal voltage U <sub>N</sub>		300 V	300 V

VDE Gutachten mit Fertigungsüberwachung		<a href="http://www.vde.com/en/Institute/OnlineService/VDE-approved-products/Pages/Online-Search.aspx">http://www.vde.com/en/Institute/OnlineService/VDE-approved-products/Pages/Online-Search.aspx</a>	40004701
Nominal current I <sub>N</sub>		12 A	
Nominal voltage U <sub>N</sub>		250 V	

IECEE CB Scheme		<a href="http://www.iecee.org/">http://www.iecee.org/</a>	DE1-58978-B1B2
Nominal current I <sub>N</sub>		12 A	
Nominal voltage U <sub>N</sub>		250 V	

cULus Recognized		<a href="http://database.ul.com/cgi-bin/XYV/template/LISEXT/1FRAME/index.htm">http://database.ul.com/cgi-bin/XYV/template/LISEXT/1FRAME/index.htm</a>	E60425-19931011
		B	D
Nominal current I <sub>N</sub>		15 A	15 A
Nominal voltage U <sub>N</sub>		300 V	150 V

EAC			B.01742
-----	---	--	---------

## Base strip - MSTB 2,5/ 3-G - 1754452

### Accessories

#### Accessories

#### Coding element

Coding star - CR-MSTB - 1734401



Coding section, inserted into the recess in the header or the inverted plug, red insulating material

---

### Filler plug

Accessories - MSTB-BL - 1755477



Keying cap, for forming sections, plugs onto header pin, green insulating material

---

### Flange

Accessories - MSTB-BF - 1759981



Mounting flange, for fixing both ends of the header onto the PCB, green insulating material, with M 2 x 14 screws and nuts.

---

### Labeled terminal marker

Marker card - SK 5/3,8:FORTL.ZAHLEN - 0804183



Marker card, Card, white, labeled, Horizontal: Consecutive numbers 1 - 10, 11 - 20, etc. up to 91 - (99)100, Mounting type: adhesive, for terminal block width: 5 mm, Lettering field: 5 x 3.8 mm

---

### Marker pen

## Base strip - MSTB 2,5/ 3-G - 1754452

### Accessories

Marker pen - B-STIFT - 1051993



Marker pen, for manual labeling of unprinted Zack strips, smear-proof and waterproof, line thickness 0.5 mm

---

### Terminal marking

Marker card - SK 5/3,8:UNBEDRUCKT - 0805409

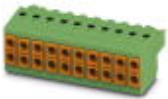


Marker card, Card, white, unlabeled, can be labeled with: Marker pen, Mounting type: adhesive, for terminal block width: 5 mm, Lettering field: 5 x 3.8 mm

---

### Additional products

Printed-circuit board connector - TVFKC 1,5/ 3-ST - 1713842



Plug component, nominal current: 10 A, rated voltage (III/2): 320 V, number of positions: 3, pitch: 5 mm, connection method: Push-in spring connection, Color: green, contact surface: Tin

---

Printed-circuit board connector - TVFKCL 1,5/ 3-ST - 1715934



Plug component, nominal current: 10 A, rated voltage (III/2): 320 V, number of positions: 3, pitch: 5 mm, connection method: Push-in spring connection, Color: green, contact surface: Tin

---

Plug - QC 1,5/ 3-ST - 1717974



Plug component, nominal current: 12 A, rated voltage (III/2): 630 V, number of positions: 3, pitch: 5 mm, connection method: Displacement connection, Color: green, contact surface: Tin

## Base strip - MSTB 2,5/ 3-G - 1754452

### Accessories

---

#### Printed-circuit board connector - FKCN 2,5/ 3-ST - 1732755

Plug component, nominal current: 12 A, rated voltage (III/2): 320 V, number of positions: 3, pitch: 5 mm, connection method: Push-in spring connection, Color: green, contact surface: Tin



#### Printed-circuit board connector - MSTB 2,5/ 3-ST - 1754465

Plug component, nominal current: 12 A, rated voltage (III/2): 320 V, number of positions: 3, pitch: 5 mm, connection method: Screw connection with tension sleeve, Color: green, contact surface: Tin



#### Printed-circuit board connector - MSTBP 2,5/ 3-ST - 1765784

Plug component, nominal current: 12 A, rated voltage (III/2): 320 V, number of positions: 3, pitch: 5 mm, connection method: Screw connection with tension sleeve, Color: green, contact surface: Tin



#### Printed-circuit board connector - SMSTB 2,5/ 3-ST - 1768778

Plug component, nominal current: 12 A, rated voltage (III/2): 320 V, number of positions: 3, pitch: 5 mm, connection method: Screw connection with tension sleeve, Color: green, contact surface: Tin



#### Printed-circuit board connector - FRONT-MSTB 2,5/ 3-ST - 1779424

Plug component, nominal current: 12 A, rated voltage (III/2): 320 V, number of positions: 3, pitch: 5 mm, connection method: Front screw connection, Color: green, contact surface: Tin



## Base strip - MSTB 2,5/ 3-G - 1754452

### Accessories

#### Printed-circuit board connector - MSTBT 2,5/ 3-ST - 1779848



Plug component, nominal current: 12 A, rated voltage (III/2): 320 V, number of positions: 3, pitch: 5 mm, connection method: Screw connection with tension sleeve, Color: green, contact surface: Tin

#### Printed-circuit board connector - MVSTBR 2,5/ 3-ST - 1792029



Plug component, nominal current: 12 A, rated voltage (III/2): 320 V, number of positions: 3, pitch: 5 mm, connection method: Screw connection with tension sleeve, Color: green, contact surface: Tin

#### Printed-circuit board connector - MVSTBW 2,5/ 3-ST - 1792537



Plug component, nominal current: 12 A, rated voltage (III/2): 320 V, number of positions: 3, pitch: 5 mm, connection method: Screw connection with tension sleeve, Color: green, contact surface: Tin

#### Printed-circuit board connector - FKCT 2,5/ 3-ST - 1909223



Plug component, nominal current: 12 A, rated voltage (III/2): 320 V, number of positions: 3, pitch: 5 mm, connection method: Push-in spring connection, Color: green, contact surface: Tin

#### Printed-circuit board connector - FKCVR 2,5/ 3-ST - 1909728



Plug component, nominal current: 12 A, rated voltage (III/2): 320 V, number of positions: 3, pitch: 5 mm, connection method: Push-in spring connection, Color: green, contact surface: Tin



## Base strip - MSTB 2,5/ 3-G - 1754452

### Accessories

Printed-circuit board connector - FKCVW 2,5/ 3-ST - 1910047



Plug component, nominal current: 12 A, rated voltage (III/2): 320 V, number of positions: 3, pitch: 5 mm, connection method: Push-in spring connection, Color: green, contact surface: Tin

---

Printed-circuit board connector - FKC 2,5/ 3-ST - 1910364



Plug component, nominal current: 12 A, rated voltage (III/2): 320 V, number of positions: 3, pitch: 5 mm, connection method: Push-in spring connection, Color: green, contact surface: Tin

---

Printed-circuit board connector - QC 1/ 3-ST-BUS - 1921683



Plug component, nominal current: 10 A, rated voltage (III/2): 630 V, number of positions: 3, pitch: 5 mm, connection method: Displacement connection, Color: green, contact surface: Tin, The plug allows conductors to be looped through from module to module, without interruption

---

Printed-circuit board connector - FKCS 2,5/ 3-ST - 1974740



Plug component, nominal current: 12 A, rated voltage (III/2): 320 V, number of positions: 3, pitch: 5 mm, connection method: Push-in spring connection, Color: green, contact surface: Tin

---

## X-ON Electronics

Largest Supplier of Electrical and Electronic Components

*Click to view similar products for [Headers & Wire Housings](#) category:*

*Click to view products by [Phoenix Contact](#) manufacturer:*

Other Similar products are found below :

[57102-F02-18ULF](#) [58102-G61-06LF](#) [582553-1](#) [009176003701906](#) [01.001.5753.1](#) [0050291907](#) [02.125.8002.8](#) [609-3404](#) [61062-3](#)  
[CSU011177004](#) [622-0430](#) [622-3653LF](#) [63453-116](#) [636-1030](#) [636-1427](#) [636-3427](#) [636-4007](#) [641938-9](#) [644827-2](#) [65495-038](#) [65692-001LF](#)  
[65781-018](#) [65781-047](#) [65817-015LF](#) [66207-023LF](#) [67095-007LF](#) [68631-112](#) [68645-018](#) [699319-000](#) [M90C108951C](#) [70.362.1628.0](#) [70-](#)  
[4210](#) [70-4226B](#) [70-4853B](#) [707-5020](#) [707-5028](#) [71.350.2428.0](#) [71961-016LF](#) [733-134](#) [754199-000](#) [760-3052](#) [80.063.4001.1](#) [800-90-001-10-](#)  
[001000](#) [801-43-002-10-013000](#) [801-43-006-10-002000](#) [803-41-018-10-001000](#) [803-43-014-20-001000](#) [803-43-024-10-001000](#) [803-93-012-](#)  
[10-001000](#) [8-1437020-4](#)