



USB TC-08

Temperature Logger

User's Guide



Contents

1 Introduction	1
1 Overview	1
2 Legal information	1
3 Safety warning	2
4 Company details	3
2 Getting Started	4
1 Installing the driver	4
2 Connecting the USB TC-08	4
3 Product information	7
1 Specifications	7
2 How a thermocouple works	8
4 Glossary	9
Index	11



1 Introduction

1.1 Overview

The USB TC-08 is a temperature and voltage logger designed to support multiple thermocouples. With the accompanying PicoLog software, the unit can be used with any laptop or PC running Windows XP SP2, Vista or Windows 7.

The driver provides cold junction compensation for thermocouples. PicoLog supports up to 20 USB TC-08 devices and the driver can support more (as many as 64, if you have a high-specification PC).

This manual describes the physical and electrical properties of the USB TC-08. For an explanation of how to use the software drivers please refer to the "USB TC-08 Programmer's Guide", and "PicoLog User's Guide".

1.2 Legal information

The material contained in this release is licensed, not sold. Pico Technology Limited grants a licence to the person who installs this software, subject to the conditions listed below.

Access

The licensee agrees to allow access to this software only to persons who have been informed of these conditions and agree to abide by them.

Usage

The software in this release is for use only with Pico products or with data collected using Pico products.

Copyright

Pico Technology Limited claims the copyright of, and retains the rights to, all material (software, documents etc.) contained in this release. You may copy and distribute the entire release in its original state, but must not copy individual items within the release other than for backup purposes.

Liability

Pico Technology and its agents shall not be liable for any loss, damage or injury, howsoever caused, related to the use of Pico Technology equipment or software, unless excluded by statute.

Fitness for purpose

No two applications are the same: Pico Technology cannot guarantee that its equipment or software is suitable for a given application. It is your responsibility, therefore, to ensure that the product is suitable for your application.

Mission-critical applications

This software is intended for use on a computer that may be running other software products. For this reason, one of the conditions of the licence is that it excludes usage in mission critical applications, for example life support systems.

Viruses

This software was continuously monitored for viruses during production, however you are responsible for virus-checking the software once it is installed.

Support

If you are unsatisfied with the performance of this software, please contact our technical support staff, who will try to fix the problem within a reasonable time scale. If you are still unsatisfied, please return the product and software to your supplier within 28 days of purchase for a full refund.

Upgrades

We provide upgrades, free of charge, from our web site at www.picotech.com. We reserve the right to charge for updates or replacements sent out on physical media.

Trademarks

Windows is a registered trademark of Microsoft Corporation in the USA and other countries. Pico Technology Limited and PicoLog are internationally registered trademarks.

1.3 Safety warning

We strongly recommend that you read the general safety information below before using your product for the first time. If the equipment is not used in the manner specified, then the protection provided may be impaired. This could result in damage to your computer and/or injury to yourself or others.

Maximum input range

The USB TC-08 is designed to measure voltages in the range of ± 70 mV. Any voltages in excess of ± 30 V may cause permanent damage to the unit.

Mains voltages

Pico products are not designed for use with mains voltages.

Safety grounding

The ground of every product is connected directly to the ground of your computer through the interconnecting cable provided. This is done in order to minimise interference. If the PC (especially laptop) is not grounded, reading stability cannot be guaranteed and it may be necessary to manually ground the equipment.

Take care to avoid connecting the inputs of the product to anything which may be at a hazardous voltage. If in doubt, use a meter to check that there is no hazardous AC or DC voltage. Failure to check may cause damage to the product and/or computer and could cause injury to yourself or others.

Take great care when measuring temperatures near mains equipment. If a sensor is accidentally connected to mains voltages, you risk damage to the converter or your computer and your computer chassis may become live.

You should assume that the product does not have a protective safety earth. Incorrect configuration or use of the device to measure voltages outside the maximum input range can be hazardous.

Repairs

The unit contains no user-serviceable parts: repair or calibration of the unit requires specialised test equipment and must be performed by Pico Technology Limited or their authorised distributors.

1.4 Company details

Address: Pico Technology Limited
James House,
Colmworth Business Park,
Eaton Socon,
St Neots,
Cambridgeshire PE19 8YP
United Kingdom

Phone: +44 (0)1480 396395

Fax: +44 (0)1480 396296

Email:
Technical Support: support@picotech.com
Sales: sales@picotech.com

Web site: www.picotech.com

2 Getting Started

2.1 Installing the driver

The driver is installed automatically when you install the PicoLog software. Alternatively, you can download the driver from our website at <http://www.picotech.com>.

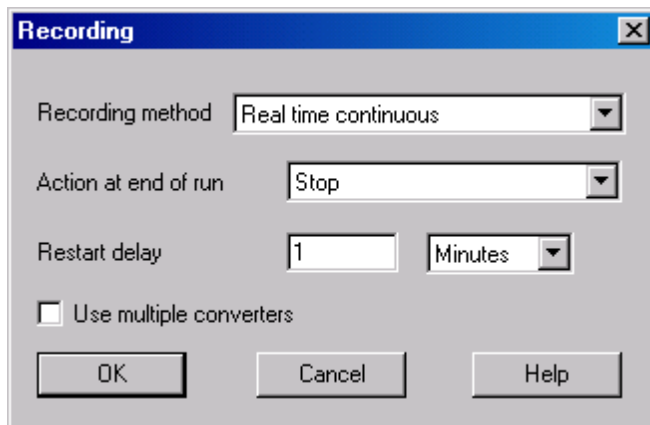
2.2 Connecting the USB TC-08

Please note: do not connect the USB TC-08 until you have installed the software and restarted your PC.

To begin using the USB TC-08, connect it to the USB port on your computer using the cable provided. Next, connect a thermocouple to one of the thermocouple input connectors. To complete the installation, select the USB TC-08 unit and thermocouple type in PicoLog as follows:

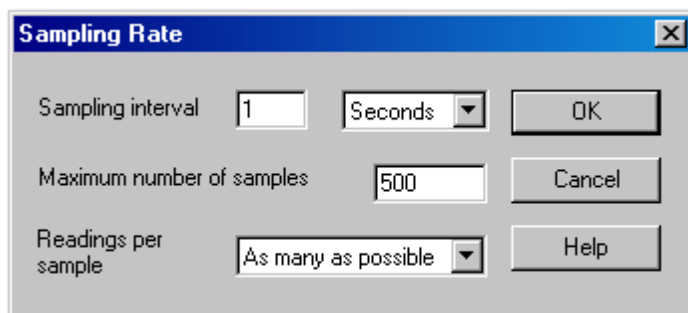
1. Start up PicoLog Recorder
2. Select **New Settings** from the **File** menu.

The **Recording** dialog box appears:



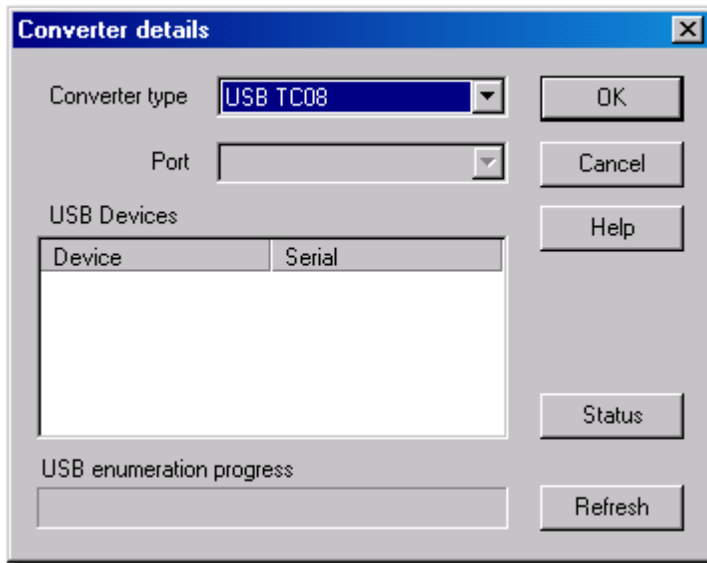
3. Click the **OK** button.

The **Sampling Rate** dialog box appears



4. Click the **OK** button.

The **Converter details** dialog box appears

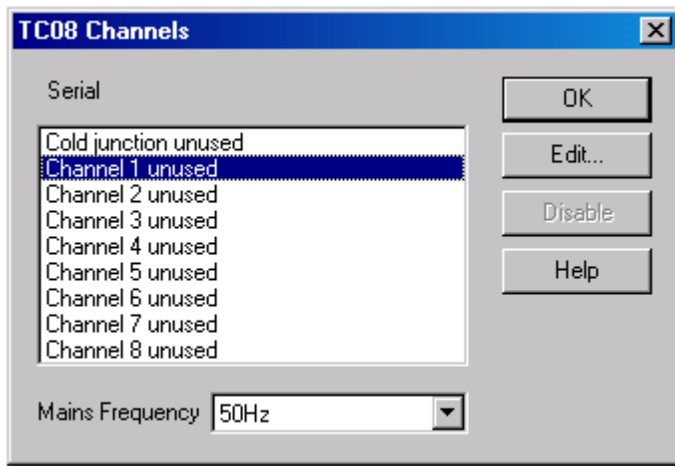


5. Select **USB TC-08** from the drop-down list of converters.

The device name and serial number should appear in the **USB Devices** pane and the USB enumeration progress bar gradually expand to 100%. If the progress bar does not start moving, disconnect and reconnect the USB TC-08, then click **Refresh**.

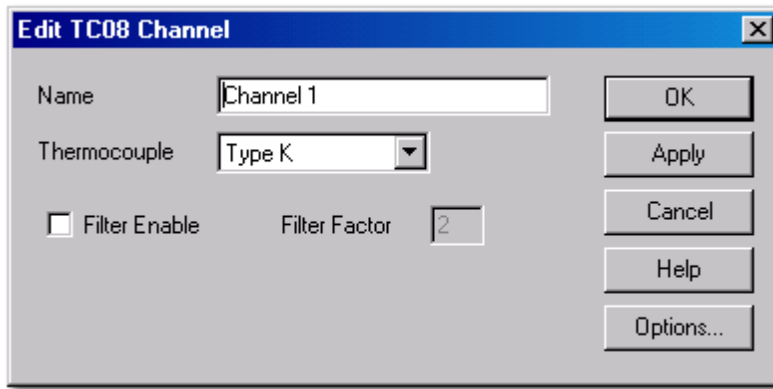
6. In the **USB Devices** pane, select the **USB TC-08**. If you are using more than one USB TC-08, check the serial number on the bottom of the device so that you know which one to select from the list
7. Click the **OK** button.

The following dialog box appears



8. In the **TC-08 Channels** window, double-click on **Channel 1 unused**.

The **Edit TC-08 Channel** dialog box appears



9. From the **Thermocouple** drop-down list, select the type of thermocouple you are using and click **OK**.

The **TC-08 Channels** dialog box reappears.

10. Click **OK**.

Channel 1 should now appear in the monitor window with the current temperature reading.



TIP: Front panel LED

- When a connection to the device has been established, the LED will be green.
- When readings are being captured, the LED will change to alternating red and green.

3 Product information

Note: Do not expose the USB TC-08 to a direct heat source (e.g. sunlight) as heating/cooling of the device may cause inaccurate readings.

3.1 Specifications

Resolution	20 bits (16.25 NFR)
Thermocouple types	B,E,J,K,N,R,S,T
Number of input channels	8
Conversion time - per active channel	100 ms
Conversion time - CJC	100 ms
Uncalibrated accuracy	The sum of $\pm 0.2\%$ and $\pm 0.5^\circ\text{C}$
Full scale input	± 70 mV
Common mode range	± 7.5 V
Overvoltage protection	± 30 V
Input impedance	2 M Ω
Input connectors	8 x miniature thermocouple
Output connector	USB upstream connector
Power requirements	No power supply required
Environmental conditions	
Operating temperature:	0 to 50°C (for stated accuracy 20 to 30°C)
Humidity (operating):	5% to 80% RH non-condensing,
Humidity (storage):	5% to 95%
	NOT water-resistant

Note: The resolution and accuracy depend upon the thermocouple type and the temperature range. Below is a list of the thermocouples and temperature ranges supported by the USB TC-08.

	Actual measurable range	Theoretical ranges
CJC	-5°C to 70°C	N/A
Type B	20°C to 1820°C (CJC must be $>20^\circ\text{C}$)	0°C to 1820°C
Type E	-270°C to 910°C	-270°C to 1000°C
Type J	-210°C to 1200°C	-210°C to 1200°C
Type K	-270°C to 1370°C	-270°C to 1370°C
Type N	-270°C to 1300°C	-270°C to 1300°C
Type R	-50°C to 1760°C	-50°C to 1760°C
Type S	-50°C to 1760°C	-50°C to 1760°C
Type T	-270°C to 400°C	-270°C to 400°C

3.2 How a thermocouple works

In a closed circuit of two dissimilar metals (a thermocouple), an electric current flows when one of the two junctions is heated with respect to the other. The current continues to flow as long as the two junctions are at different temperatures. The magnitude and direction of the current is a function of the temperature difference between the junctions and of the thermal properties of the metals used in the circuit. This phenomenon is known as the Seebeck Effect.

The conductors can be made of any two dissimilar metals, and when the hot junction is heated the current flow can be observed. If the positions of the hot and cold junctions are reversed, current flows in the opposite direction.

A thermocouple circuit actually generates a measurable, low-voltage output that is almost directly proportional to the temperature difference between the hot junction and the cold junction. A change in this temperature difference produces some net change in the voltage.

Note: More information on choosing and using thermocouples can be found [at this page on our website](#).

4 Glossary

Cold junction compensation (CJC). A method of compensating for ambient temperature variations in thermocouple circuits.

Common mode range. The voltage range, relative to the ground of the data logger, within which both inputs of a differential measurement must lie in order to achieve an accurate measurement.

DLL. Dynamic Link Library. Files with this file extension contain a collection of Windows functions designed to perform a specific class of operations.

Input impedance. The resistance measured between the input terminals of a circuit.

NFR. Noise-Free Resolution. The effective number of bits of resolution that can be considered noise-free.

Overvoltage protection. The maximum input voltage that can be applied without damaging the unit.

Resolution. A value in bits, related to the number of increments of an analog input signal that can be detected by a digital measurement system. A high-resolution measurement system detects smaller signal increments than a low-resolution measurement system.

Thermocouple. A device consisting of two dissimilar metals joined together. The thermoelectric voltage developed between the two junctions is proportional to the temperature difference between the junctions.

Type B thermocouple. Type B thermocouples are made from platinum and rhodium and are suitable for high temperature measurements of up to 1820°C. Unusually, due to the shape of their temperature / voltage curve, type B thermocouples give the same output at 0°C as at 42°C.

Type E thermocouple. Type E thermocouples are made from chromel and constantan. They have a high output (68 $\mu\text{V}/^\circ\text{C}$), making them well suited to low-temperature (cryogenic) use. They are non-magnetic.

Type J thermocouple. Type J thermocouples are made from iron and constantan. They measure temperatures in the range -210 to +1200°C. The main application is with old equipment that can not accept the more modern thermocouple. J types should not be used above 760°C, as an abrupt magnetic transformation will cause permanent decalibration.

Type K thermocouple. Type K thermocouples are low-cost, general-purpose thermocouples, made from chromel and alumel, operating in the -270°C to +1370°C temperature range. Sensitivity is approx 41 $\mu\text{V}/^\circ\text{C}$.

Type N thermocouple. Type N thermocouples are made from nicrosil and nisil. The high stability and resistance to high-temperature oxidation of these thermocouples make them suitable for measuring high temperatures. They are less expensive than platinum types B,R, and S and were designed to be an improved type K.

Type R thermocouple. Type R thermocouples are made from platinum and rhodium, and are suitable for high-temperature measurements of up to 1760°C. Low sensitivity (10 $\mu\text{V}/^\circ\text{C}$) and high cost make them unsuitable for general purpose use.

Type S thermocouple. Type S thermocouples are made from platinum and rhodium, and are suitable for high-temperature measurements of up to 1760°C. Low sensitivity (10 $\mu\text{V}/^\circ\text{C}$) and high cost make these thermocouples unsuitable for general purpose use. Due to their high stability, type S thermocouples are used as the standard of calibration for the melting point of gold.

Type T thermocouple. Type T thermocouples are made from copper and constantan, are highly accurate, and operate in the -270°C to $+400^\circ\text{C}$ temperature range.

USB. Universal Serial Bus. This is a standard port that enables you to connect external devices to PCs. A typical USB 1.1 port supports a data transfer rate of 12 Mbps (12 megabits per second), and is much faster than a COM port.

Index

C

- Cold junction 8
- Connection 4
- Contact details 3

H

- Hot junction 8

I

- Impedance 7
- Installation 4

R

- Repairs 2
- Resolution 7

S

- Safety 2
- Specification 7

T

- Thermocouple 8





Pico Technology

James House
Colmworth Business Park
ST. NEOTS
Cambridgeshire
PE19 8YP
United Kingdom
Tel: +44 (0) 1480 396 395
Fax: +44 (0) 1480 396 296
www.picotech.com

usbtc08.en r7 24.04.13

Copyright © 2005-2013 Pico Technology Limited. All rights reserved.

X-ON Electronics

Largest Supplier of Electrical and Electronic Components

Click to view similar products for [pico manufacturer](#):

Other Similar products are found below :

[TA041](#) [TA139](#) [MI136](#) [PICO CONNECT 442](#) [PICOCONNECT 910 KIT](#) [TA328](#) [TA155](#) [81170](#) [MI106](#) [TA384](#) [TA385](#) [100501](#)
[44740M2735659](#) [TA313](#) [PICOLOG 1216](#) [PICOSCOPE 5442D](#) [TA018](#) [TA090](#) [TA050](#) [42345M2735662](#) [TA089](#) [75005](#) [PS010](#) [TA058](#)
[SE028](#) [TC-08](#) [PICOSCOPE 2204A](#)