

Bushless version

FEATURES

- Carbon resistive element
- Dust proof enclosure
- Polyester substrate
- Modular gang type (up to 4)
- Self extinguishable material UL 94-V0
- Upon request:
 - Metallic support
 - Stereo matching
 - Switch
 - Nut & washer
 - Bushless option available

MECHANICAL SPECIFICATIONS

- Mechanical rotation angle: $300^\circ \pm 5^\circ$
- Electrical rotation angle: $280^\circ \pm 20^\circ$
- Torque: 0.5 to 1.5 Ncm. (0.7 to 2.1 in-oz)
- Stop torque: > 40 Ncm. (> 56 in-oz)
- Max. torque nut (binding out): < 80 Ncm. (112 in-oz)
- Thrust and pull in the shaft: > 25 N

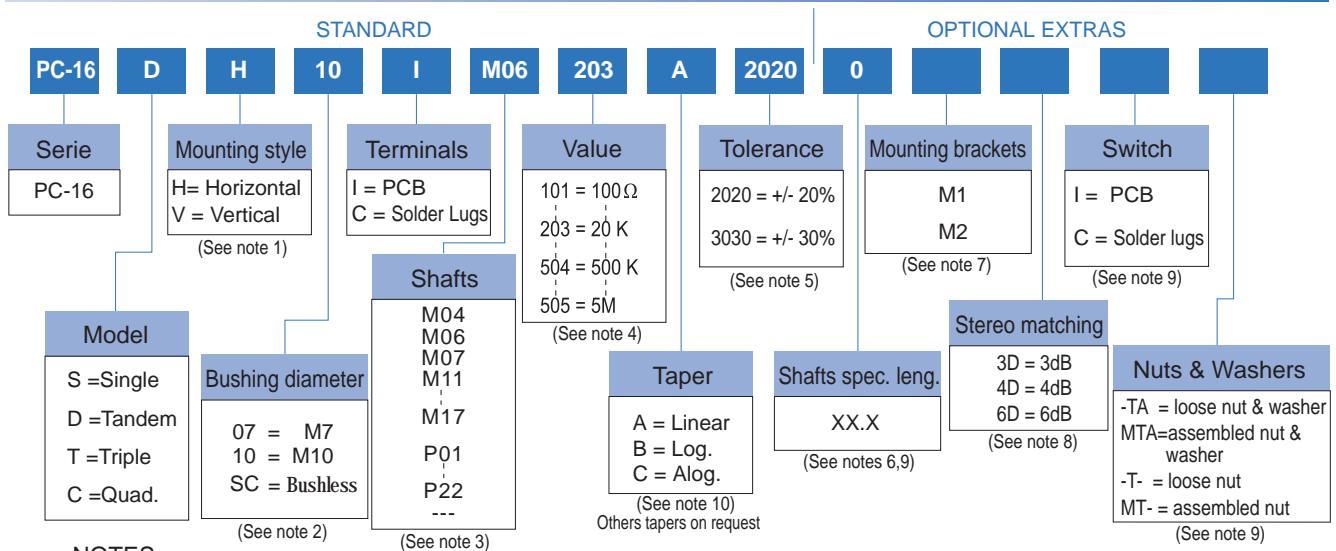
ELECTRICAL SPECIFICATIONS

- Range of values (*) $100\Omega \leq R_n \leq 5$ M (Decad. 1.0 - 2.0 - 2.2 - 2.5 - 4.7 - 5.0)
- Tolerance (*): $100\Omega \leq R_n \leq 1$ M Ω $\pm 20\%$
 1 M $\Omega < R_n \leq 5$ M Ω $\pm 30\%$
- Max. Voltage: 250 VDC (lin) 125 VDC (no lin)
- Nominal Power 50°C (122°F) (see power rating curve) 0.2 W (lin) 0.1 W (no lin)
- Taper (*) (Log. & Alog. only $R_n > 1$ K) Lin ; Log; Alog.
- Residual resistance: $\leq 0.1\%$ R_n (2 Ω min.)
- Equivalent Noise Resistance: $\leq 3\%$ R_n (3 Ω min.)
- Operating temperature**: $-25^\circ\text{C} + 70^\circ\text{C}$ ($-13^\circ\text{F} + 158^\circ\text{F}$)

* Others upon request

** Up to 85°C depending on application

HOW TO ORDER

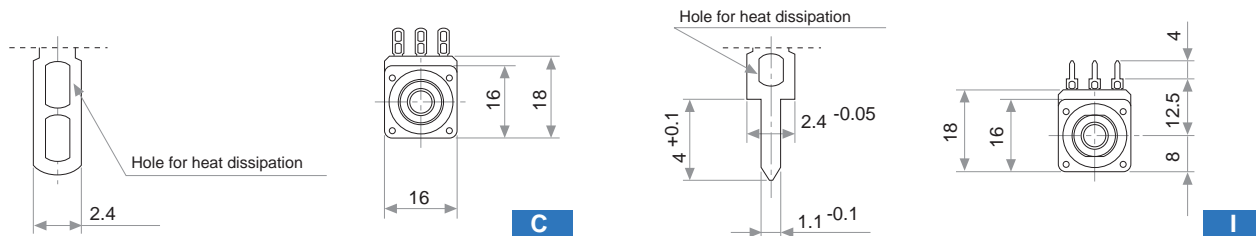


NOTES:

- (1) Mounting style: Type "V" is only available in model "S" potentiometer and with printed circuit terminals.
- (2) Bushings: Type "10" has two parallel flat surfaces for avoiding rotation. Bushless option only available for single model.
- (3) M07 shaft is only available with M10 bushing. --- = no shaft
- (4) Value:
 - Code: 10 1 100 Ω
 - 10: Number of zeros
 - 1: 2 first digits of the value.
 - In models "D", "T", "C", with different values, they will be asked by drawings.
- (5) Tolerance (non standard), upon request. Example: +7% Code: 07 05
 -5% Code: 07 05
 - 07: negative tolerance
 - 05: positive tolerance
- (6) Shaft special length:
 - Only for special length and plain shafts (not knurled). Example: Shaft $\varnothing 6.35$ L= 24.5 M07 24.5
 - NOTE: Maximum length recommended: L = 45
- (7) Mounting brackets: Only applicable for model "S", mounting "H" and without switch.
- (8) Stereo matching: not available for single models. Maximum will be: • 3dB for model "D" • 4dB for model "T" • 6dB for model "C"
- (9) Not available for Bushless version.
- (10) Switch option not available with antilog taper.

NOTE: The information contained here should be used for reference purposes only.

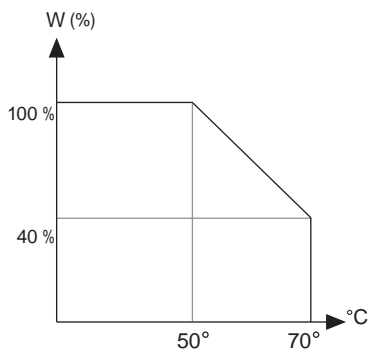
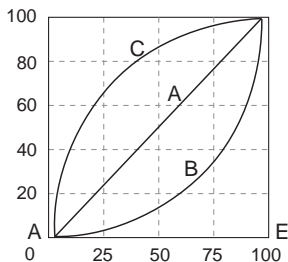
TERMINALS



TAPERS

Standard

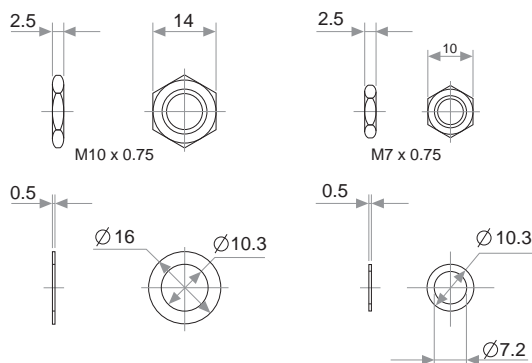
A = Linear
B = Log.
C = Alog.



NUTS & WASHERS

Bushing 10

Bushing 07



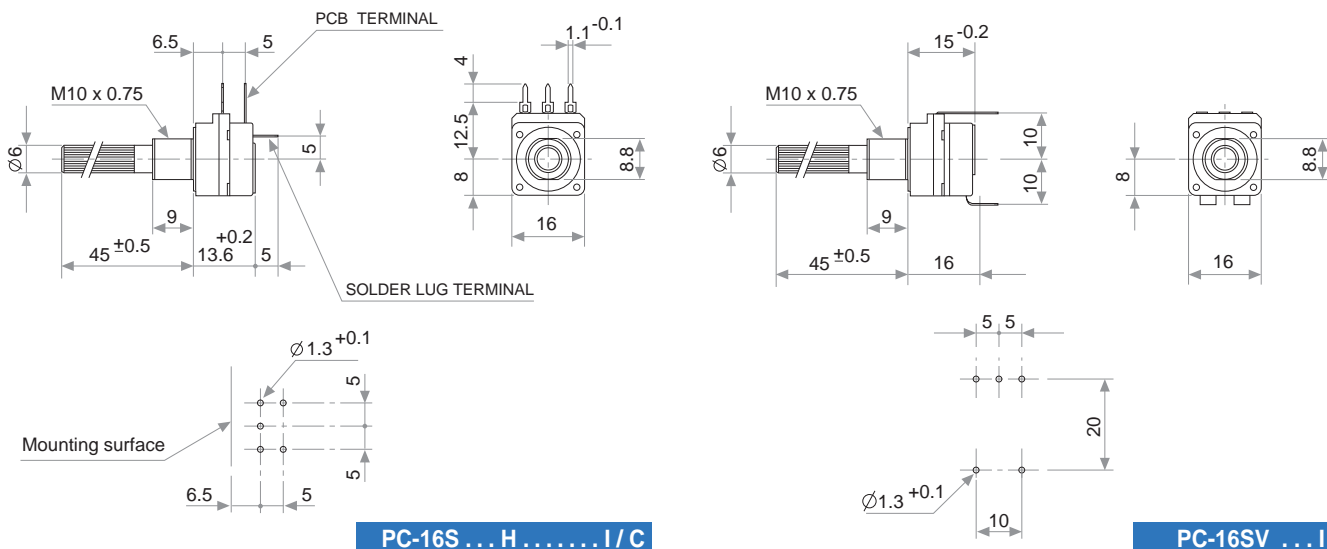
NOTE = Please note relative terminal positions when ordering non linear tapers.

TESTS

TYPICAL VARIATIONS

TESTS		TYPICAL VARIATIONS
ELECTRICAL LIFE	1.000 h. @ 50°C; 0.2 W	±5 %
MECHANICAL LIFE : POT. SWITCH	25.000 (10-15 CPM) 10.000 (1 A, 50 VAC)	±3 % (Rn < 1 MΩ)
TEMPERATURE COEFFICIENT	-25°C; +70°C	±300 ppm/°C (Rn < 100 KΩ)
THERMAL CYCLING	16 h. @ 85°C; 2h. @ -25°C	±2.5 %
DAMP HEAT	500 h. @ 40°C @ 95% HR	±5 %
VIBRATION (for each plane X,Y,Z)	2 h. @ 10 Hz. ... 55 Hz.	±2 %

SWITCH



PC-16S ... H ... I / C

PC-16SV ... I

SWITCH SPECIFICATIONS

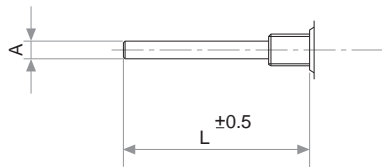
NOMINAL CURRENT	1A, 250 VAC
CONTACT RESISTANCE (initial)	10 m Ω
OPERATING TORQUE	1 to 3 Ncm (1.4 to 4.2 in oz)
OPERATING ANGLE	30° \pm 5°
TEST VOLTAGE	500 V

PACKAGING

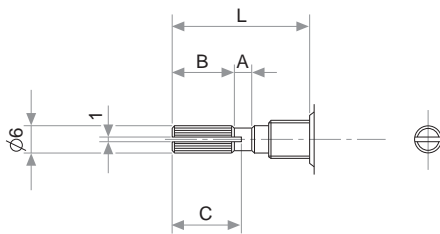
Boxes of 50 pieces (160 x 110 x 85 mm.)

METALIC SHAFTS

STANDARD

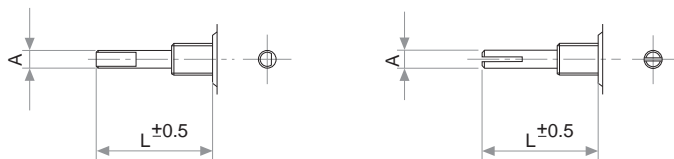


A	L	CODE
4	45	M04
6	45	M06
6.35	45	M07



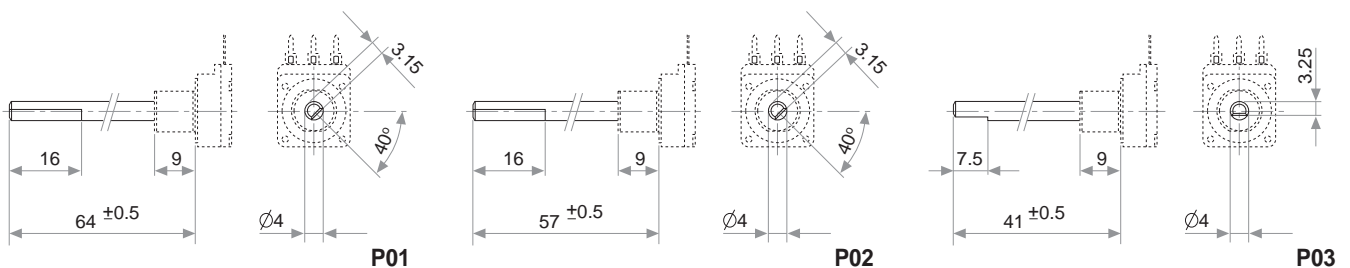
A	B	C	L	CODE
2	5	7	15	M11
2	10	11	20	M12
4	12	14	25	M13
4	12	14	30	M14
4	12	14	35	M15
4	12	14	40	M16
4	12	14	45	M17

SPECIAL

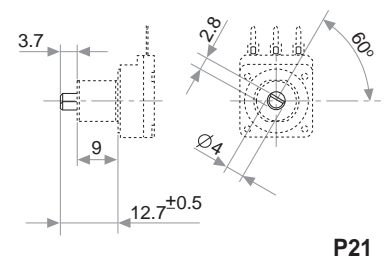
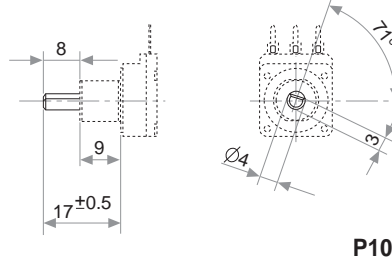
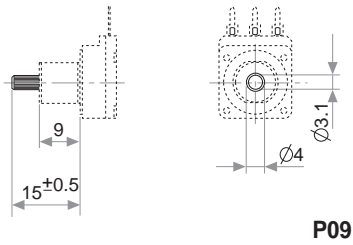
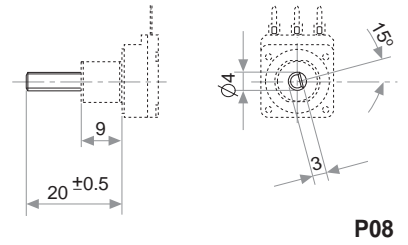
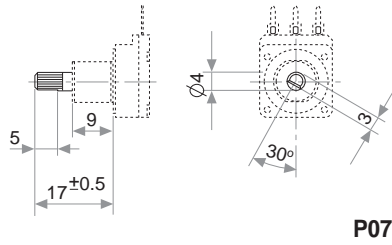
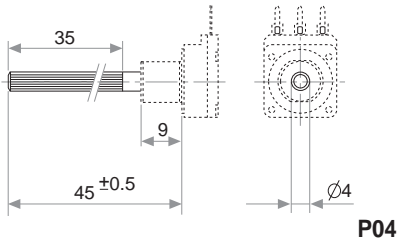


A
4
6
6.35

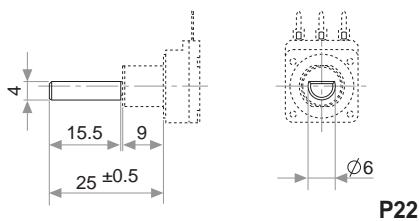
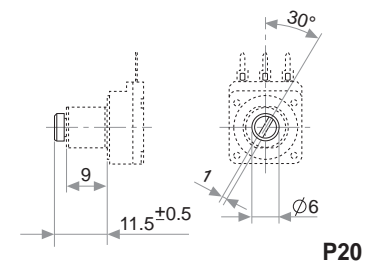
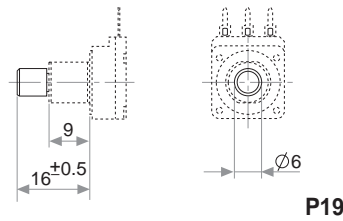
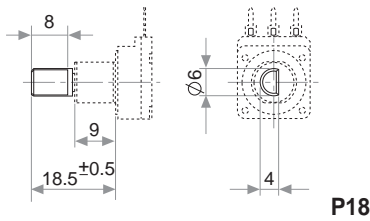
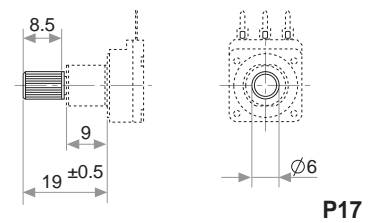
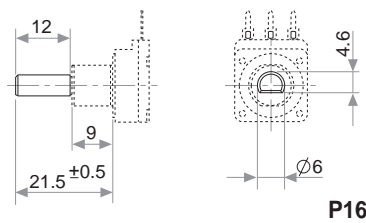
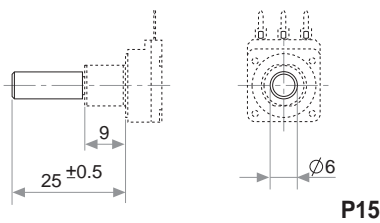
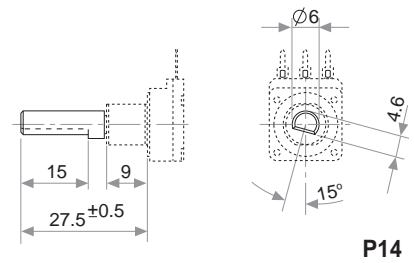
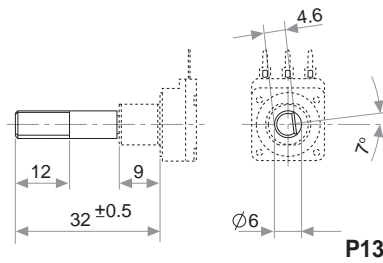
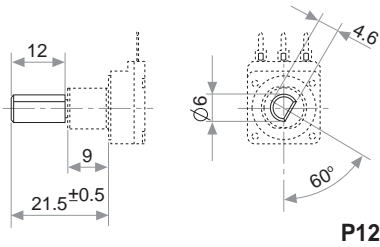
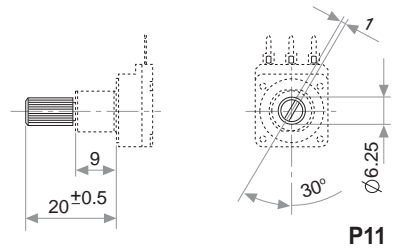
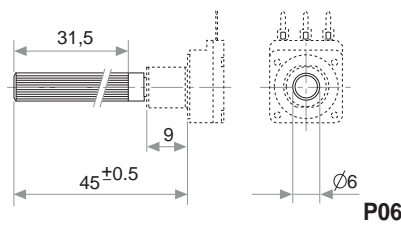
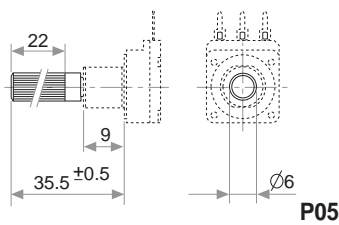
PLASTIC SHAFTS $\varnothing 4$



PLASTIC SHAFTS Ø 4



PLASTIC SHAFTS Ø 6



NOTE: Shaft position shown full CCW. Any other position for plastic shafts has to be shifted n times 24°
Other positions upon request.

X-ON Electronics

Largest Supplier of Electrical and Electronic Components

Click to view similar products for [piher](#) manufacturer:

Other Similar products are found below :

[5034CR](#) [T16SH-M04N502A2020MTA](#) [MTS360-1A-W-360-0000-E](#) [T21TH-M0607102A2020MTA](#) [PT10-V-250](#) [T21TH-M0607502A2020MTA](#) [T16SH-M04N252A2020MTA](#) [PT10LH01-102A2020-PM-S](#) [T16SH-M04N103A2020MTA](#) [PT15NV18-104A20205208](#) [PT15NV18-303A2020](#) [PT6KH252A2020](#) [PST360-11302-1P-C0000-ERA360-24E-F100](#) [MTS-360-1A-C0000-ERA360-05E](#) [PT10LH01504A2020S](#) [T-16 DHM06 10KA](#) [PT15LV02105A2020S](#) [PT15NH05252A2020S](#) [PC16DH10IP06474B2020MTA](#) [PT15LV18-101A2020](#) [PC16SH07IP21335A1010](#) [T16SH-M04N102A2020MTA](#) [PC16DH07CP06102A2020TA](#) [PT15LV02503A2020S](#) [PT15LH05105A2020S](#) [809550X](#) [PT10MV10-253A2020](#) [PT15LV02502A2020S](#) [PTC15MV18-105A1010](#) [PT10LV10105A2020S](#) [PC-16SH10IP06 100KB](#) [PC16DH07CP06104A2020TA](#) [PT10LH01-104A2020](#) [PT6KV-472A2020](#) [PT15LV02251A2020S](#) [453089C](#) [PT15YV15-104A2020-04RO-PM](#) [PT10LH01-252A2020PM-S](#) [PT15LV02101A2020S](#) [PC16SH10IP06101A2020TA](#) [PT15NH05105A2020S](#) [PT15LV02102A2020S](#) [PT15LV02253A2020S](#) [PTC10LV10-253A2020](#) [PT15LV18-505A3030](#) [5371](#) [PC16DH10IP06103A2020TA](#) [PT15LH05501A2020S](#) [T-21AHM0607104A2020](#)