

Category 4, EN 954-1 PNOZ X4



EMERGENCY STOP switchgear and safety gate monitor according to VDE 0113-1, 11/98, EN 60204-1, 12/97 and IEC 60204-1, 11/98

Features

- either monitored, unmonitored or automatic start possible
- 1-channel or 2-channel wiring with or without shorts across contacts detection

Approvals

	PNOZ X4
	●
	●
	●

Technical data	PNOZ X4
Electrical data	
Power supply	AC: 24, 110, 115, 120, 230, 240 V DC: 24 V
Tolerance	85 ... 110 %
Power consumption	Approx. 4.5 VA/2.5 W
Voltage and current at input, start and feedback loop	24 V DC, 40 mA
Output contacts	3 safety contacts (NO) 1 auxiliary contact (NC)
Switching capability according to EN 60947-4-1, 02/01	AC1: 240 V/8 A/2000 VA DC1: 24 V/8 A/200 W
EN 60947-5-1, 11/97 (DC13:6 cycles/min)	AC15: 230 V/5 A; DC13: 24 V/7 A
Contact protection according to EN 60947-5-1, 08/00	10 A quick or 6 A slow
Times	
Pickup delay	monitored start: max. 100 ms auto./man. start: max. 0,35 s
Delay-on de-energisation	at EMERGENCY STOP: max. 50 ms at mains off: max. 0,5 s
Recovery time	approx. 1 s
Simultaneity channel 1 and 2	∞
Power failure buffer	approx. 25 ms
Mechanical data	
Max. cross-section of outer conductor single wire or multi-wire with end ferrule	2 x 1.5 mm ² oder 1 x 2.5 mm ²
Dimensions (H x W x D)	87 x 45 x 121 mm
Weight	AC: 360 g, DC: 265 g

Description

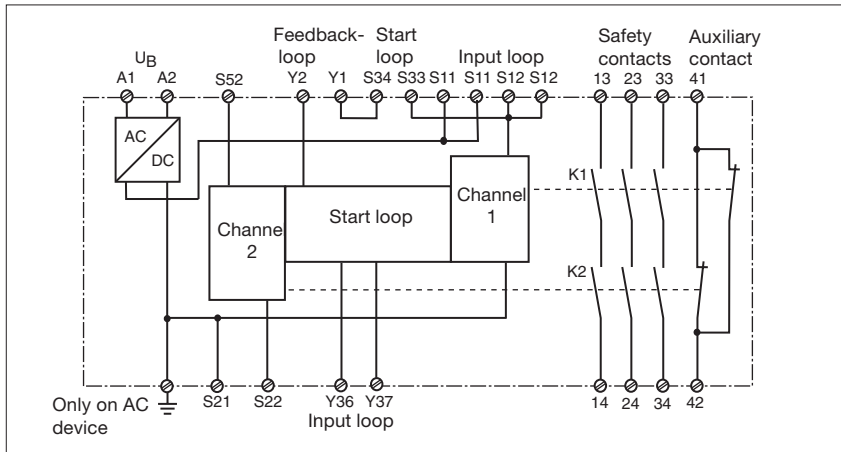
- 45 mm P-97 housing, on standard rail, snap-on
- Relay outputs, positive-guided:
 - 3 safety contacts (NO)
 - 1 auxiliary contact (NC)
- Connection possibilities for
 - EMERGENCY STOP switch
 - Safety gate limit switch
 - Start switch
- LEDs for switching status Channel 1 and 2 and power supply
- Contact multiplication and Contact amplification possible by external contactors

Operating modes

- Single channel mode
- Dual channel mode without shorts across contacts detection
- Dual channel mode with shorts across contacts detection
- Automatic start
- Manual start without monitoring
- Manual start with monitoring

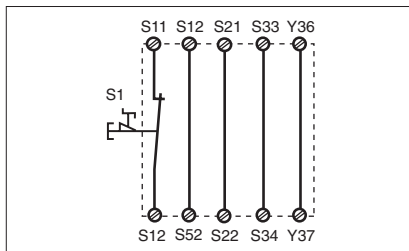
Category 4, EN 954-1 PNOZ X4

Schematic interior diagram

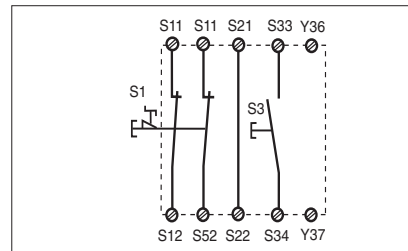


External wiring

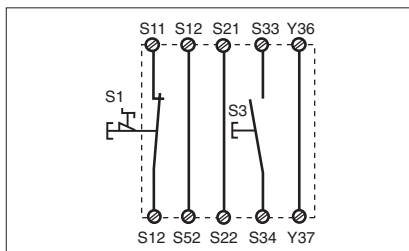
● Example 1
Single-channel EMERGENCY STOP wiring with automatic start



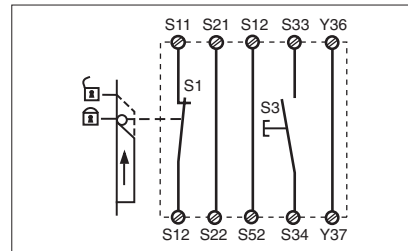
● Example 3
Dual-channel EMERGENCY STOP wiring without shorts across contacts detection with monitored start



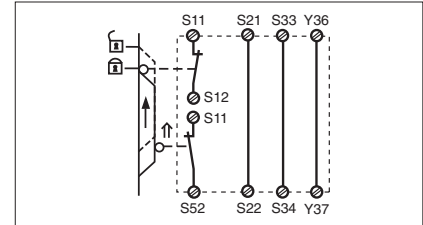
● Example 2
Single-channel EMERGENCY STOP wiring with unmonitored start



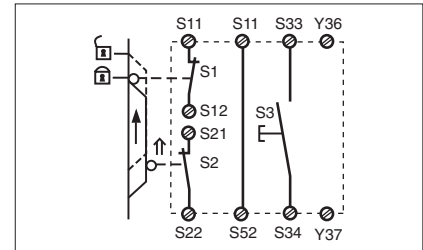
● Example 4
Single-channel safety gate control with unmonitored start



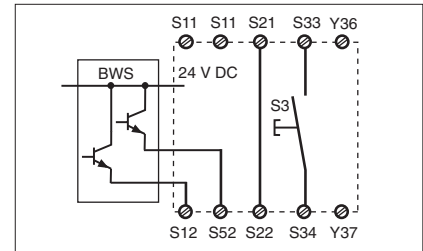
● Example 5
Dual-channel safety gate control without shorts across contacts detection with automatic start



● Example 6
Dual-channel safety gate control with shorts across contacts detection and monitored start



● Example 7
Dual channel light barrier control with shorts across contacts detection by BWS, with monitored start



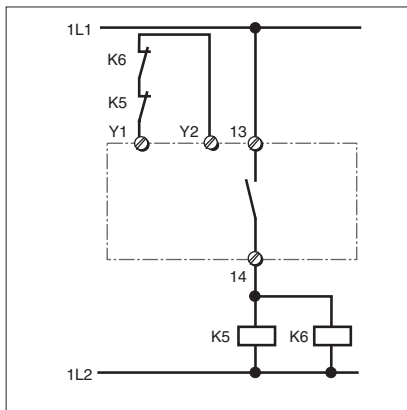
- Legend

- S1/S2: EMERGENCY STOP or safety gate switch
- S3: Start switch
- ↑ actuated element
- ⬇ gate not closed
- ⬆ gate closed

Category 4, EN 954-1 PNOZ X4

- Contact multiplication

The output contacts can be amplified or multiplied by external contactors with positive-guided contacts if necessary.



Category 4, EN 954-1 PNOZ X4

General Technical Data

Unless stated otherwise in the technical details for the specific unit

Electrical Data

Frequency Range AC	50 ... 60 Hz
Residual Ripple DC	160 %
Contact Material	AgSnO ₂
Continuous Duty	100 %

Environmental Data

EMC	EN 50081-1, 01/92, EN 50082-2, 03/00
Vibration in accordance with EN 60068-2-6, 01/00	Frequency: 10 ... 55 Hz, Amplitude: 0.35 mm
Climatic Suitability	DIN IEC 60068-2-3, 12/86
Airgap Creepage	DIN VDE 0110 part 1, 04/97
Ambient Temperature	-10 ... +55 °C
Storage Temperature	-40 ... +85 °C

Mechanical Data

Torque Setting on Connection Terminals	0.6 Nm (screws)
Mounting Position	Any
Housing Material	Thermoplast Noryl SE 100
Protection	Mounting: IP 54 Housing: IP 40 Terminal Range: IP 20

The units were tested in accordance with the relevant standards current at the time of development.

Order References

Type	U _B	Order No.
PNOZ X4	24 V DC	774 730
PNOZ X4	24 V AC	774 731
PNOZ X4	110 V AC	774 734
PNOZ X4	115 V AC	774 735
PNOZ X4	120 V AC	774 736
PNOZ X4	230 V AC	774 738
PNOZ X4	240 V AC	774 739

X-ON Electronics

Largest Supplier of Electrical and Electronic Components

Click to view similar products for [Safety Relays](#) category:

Click to view products by [Pilz](#) manufacturer:

Other Similar products are found below :

[7-1618103-5](#) [1351-1X](#) [1618089-2](#) [C200HDA003](#) [C200HMR432](#) [C200HMR832](#) [C200HMR833](#) [20-050-36X](#) [C500OD415CN](#) [2-1618068-0](#)
[25994](#) [9-1618103-2](#) [SP10-ETL01](#) [21-890](#) [3-1618060-0](#) [C200HNC112](#) [C200HOD214](#) [C500CN812N](#) [1100X](#) [1100-42X](#) [1-1618062-0](#) [7-](#)
[1618103-6](#) [50.12.9.110.1000](#) [SP16DRD](#) [SP16DRA](#) [XPSAXE5120P](#) [XPSECPE5131P](#) [C500-CE243](#) [607.5111.020](#) [439390016](#) [607.5111.009](#)
[607.5111.010](#) [PSR-MM25-1NO-2DO-24DC-SC](#) [NXSL5500](#) [600PSR-165/300-CU](#) [SR4D4110](#) [J73KN-AM-22](#) [G7SA-3A1B DC12](#) [G7SA-](#)
[4A2B DC12](#) [G7SA-3A1B DC48](#) [G7SA-2A2B DC48](#) [ES-FA-9AA](#) [50.12.9.024.5000](#) [44510-2310](#) [V23047-A1036-A501](#) [44510-1081](#) [44510-](#)
[2021](#) [44510-2232](#) [WUF-12-5060-T](#) [SR4M4021](#)