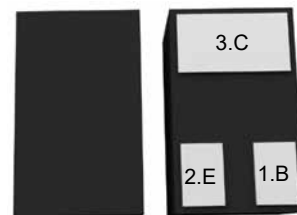


### Features

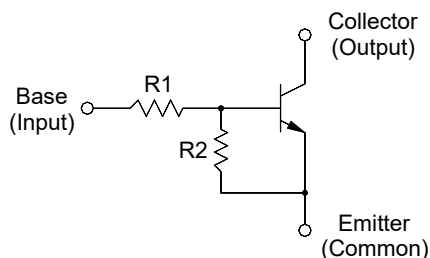
- With built-in bias resistors
- Simplify circuit design
- Reduce a quantity of parts and manufacturing process

### DFN1x0.6-3L



1.Base 2.Emitter 3.Collector

### Equivalent Circuit



### Resistor Values/Marking Code

Type	R1 (KΩ)	R2 (KΩ)	Marking Code
DTC123JDC	2.2	47	6E

### Absolute Maximum Ratings (T<sub>A</sub>=25°C)

Parameter	Symbol	Value	Unit
Output Voltage	V <sub>O</sub>	50	V
Input Voltage	V <sub>I</sub>	12,-5	V
Output Current	I <sub>O</sub>	100	mA
Maximum Power Dissipation	P <sub>D</sub>	200	mW
Junction Temperature	T <sub>J</sub>	150	°C
Storage Temperature Range	T <sub>STG</sub>	-55 to +150	°C



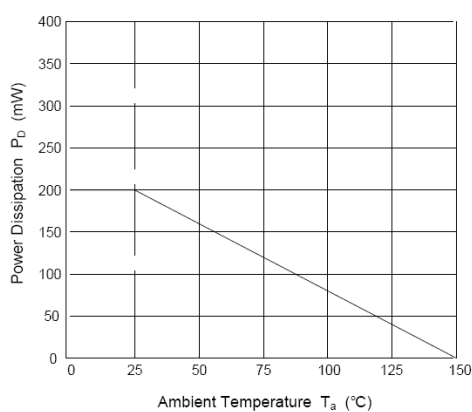
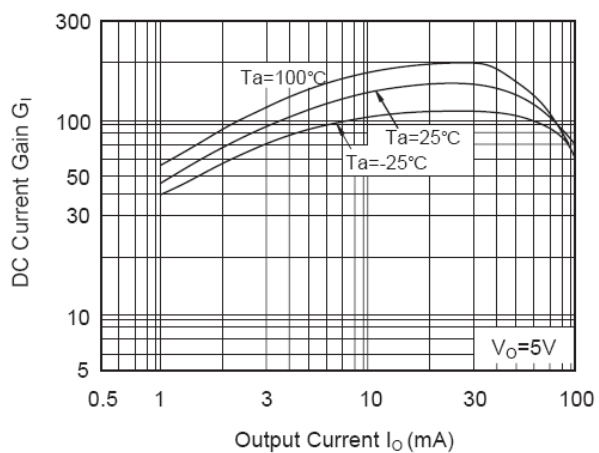
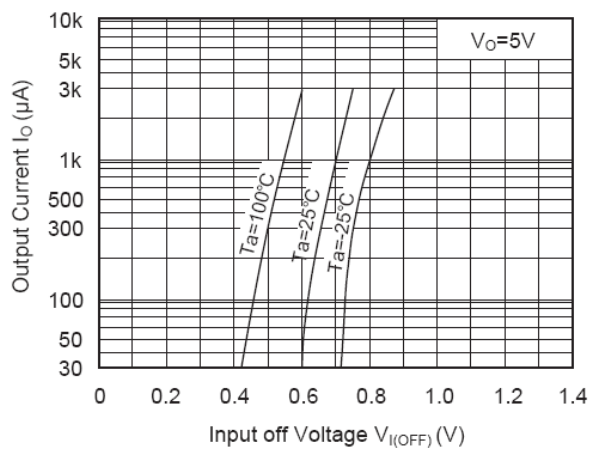
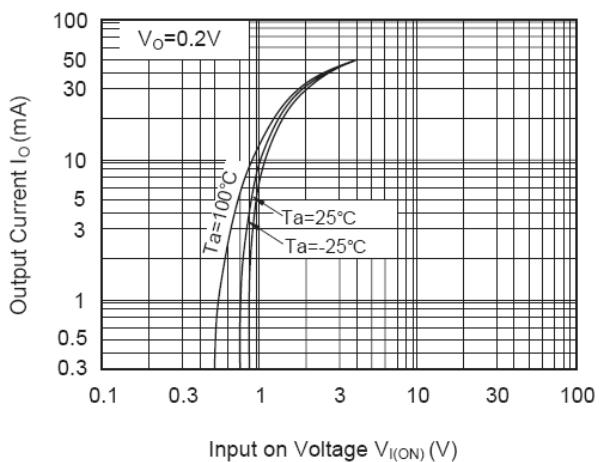
# DTC123JDC

## NPN Digital Transistor

### Electrical Characteristics (T<sub>A</sub>=25°C)

Parameter	Symbol	Min.	Typ.	Max.	Unit
DC Current Gain at V <sub>O</sub> = 5 V, I <sub>O</sub> = 10 mA	G <sub>I</sub>	80	--	--	--
Output Cutoff Current at V <sub>O</sub> = 50 V	I <sub>O(OFF)</sub>	--	--	500	nA
Input Cutoff Current at V <sub>I</sub> = 5 V	I <sub>I</sub>	--	--	3.6	mA
Output Voltage (ON) at I <sub>O</sub> = -10 mA, I <sub>I</sub> = 0.5 mA	V <sub>O(ON)</sub>	--	--	0.3	V
Input Voltage (ON) at V <sub>O</sub> = 0.2 V, I <sub>O</sub> = 5 mA	V <sub>I(ON)</sub>	--	--	1.1	V
Input Voltage (OFF) at V <sub>CC</sub> = 5 V, I <sub>O</sub> = 0.1 mA	V <sub>I(OFF)</sub>	0.5	--	--	V
Transition Frequency at V <sub>O</sub> = 10 V, I <sub>O</sub> = 5 mA	f <sub>T</sub>	--	200	--	MHz

### Typical Characteristic Curves





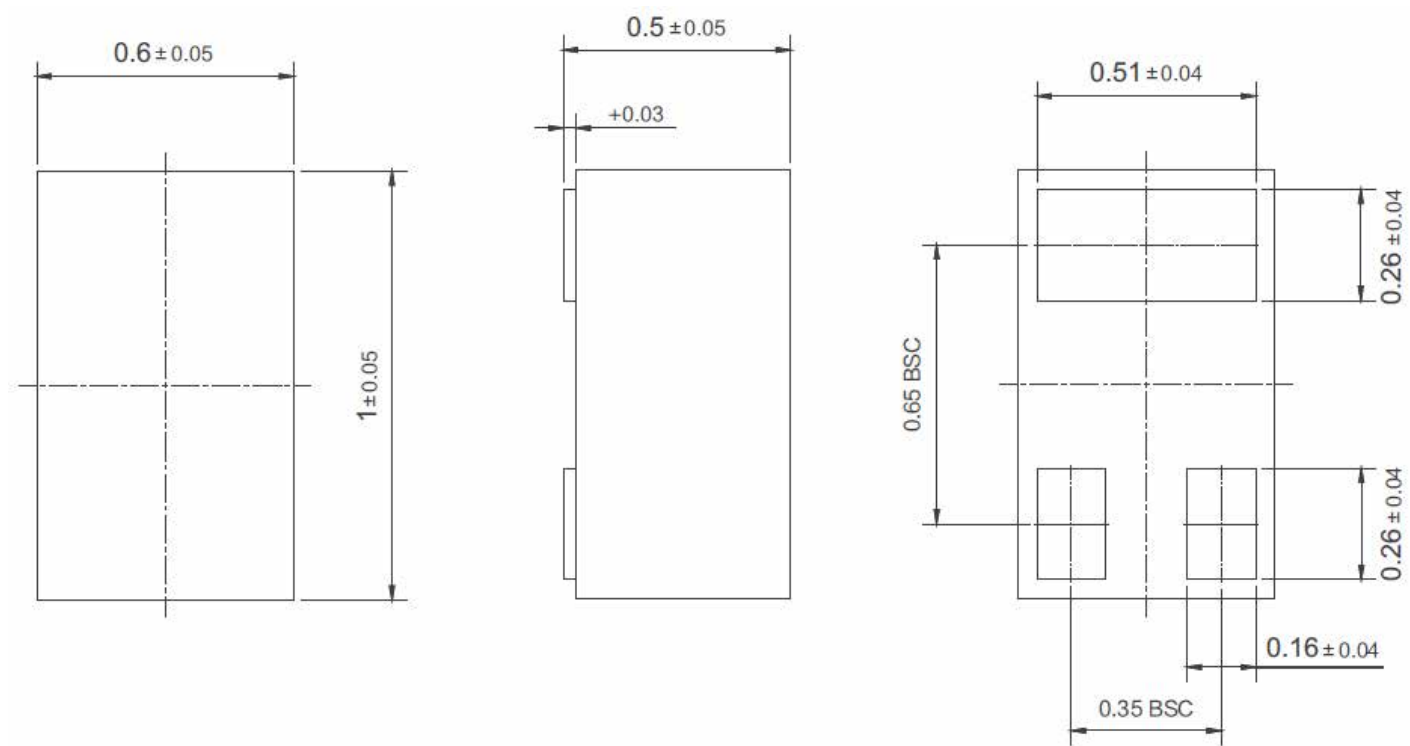
# DTC123JDC

## NPN Digital Transistor

### Package Outline

DFN1x0.6-3L-0009

Dimensions in mm



### Ordering Information

Device	Package	Shipping
DTC123JDC	DFN1x0.6-3L	3,000PCS/Reel&7inches

## X-ON Electronics

Largest Supplier of Electrical and Electronic Components

*Click to view similar products for [Bipolar Transistors - Pre-Biased](#) category:*

*Click to view products by [Pingjingsemi](#) manufacturer:*

Other Similar products are found below :

[RN1607\(TE85L,F\)](#) [DRC9A14E0L](#) [DTA124GKAT146](#) [DTA144WETL](#) [DTA144WKAT146](#) [DTC113EET1G](#) [DTC115TETL](#)  
[DTC115TKAT146](#) [DTC124TETL](#) [DTC144VUAT106](#) [MUN5241T1G](#) [BCR158WH6327XTSA1](#) [NSBA114TDP6T5G](#) [NSBA123EF3T5G](#)  
[NSBA143TF3T5G](#) [NSBA144TF3T5G](#) [NSBC113EF3T5G](#) [NSBC124XF3T5G](#) [SMUN5330DW1T1G](#) [SSVMUN5312DW1T2G](#)  
[RN1303\(TE85L,F\)](#) [RN1306\(TE85L,F\)](#) [RN4605\(TE85L,F\)](#) [TTEPROTOTYPE79](#) [EMH15T2R](#) [SMUN2214T3G](#) [SMUN5335DW1T1G](#)  
[NSBC143ZPDP6T5G](#) [NSVDTA143ZET1G](#) [NSVDTC143ZET1G](#) [NSVMUN5113DW1T3G](#) [SMUN2214T1G](#) [FMA7AT148](#) [DTC114EUA-TP](#)  
[SMUN5237DW1T1G](#) [SMUN5213DW1T1G](#) [SMUN5114DW1T1G](#) [SMUN2111T1G](#) [DTC124ECA-TP](#) [DTC123TM3T5G](#) [DTA114ECA-TP](#)  
[DTA113EM3T5G](#) [DTC113EM3T5G](#) [NSVMUN5135DW1T1G](#) [NSVMUN2237T1G](#) [NSVDTC143ZM3T5G](#) [SMUN5335DW1T2G](#)  
[SMUN5216DW1T1G](#) [NSVMUN5316DW1T1G](#) [NSVMUN5215DW1T1G](#)