



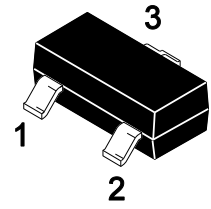
# MMBD4148

## Silicon Epitaxial Planar Switching Diode

### Features

- High voltage
- Small package
- Small capacitance

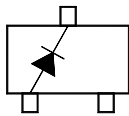
SOT-23



### Equivalent Circuit

**MMBD4148**

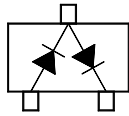
3.Cathode



1.Anode 2.NC

**MMBD4148SE**

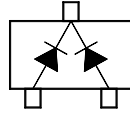
3.Cathode1、 Anode2



1.Anode1 2.Cathode2

**MMBD4148CC**

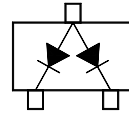
3.Cathode1、 Cathode2



1.Anode1 2.Anode2

**MMBD4148CA**

3.Anode1、 Anode2



1.Cathode1 2.Cathode2

**Marking Code :**

MMBD4148 : 5D

MMBD4148SE : A7

MMBD4148CC : A3

MMBD4148CA : A1

### Absolute Maximum Ratings ( $T_A=25^\circ\text{C}$ )

Parameter	Symbol	Value	Unit
Maximum Repetitive Reverse Voltage	$V_{RRM}$	100	V
Reverse Voltage	$V_R$	75	V
Average Rectified Forward Current	$I_{F(AV)}$	200	mA
DC Forward Current	$I_{FM}$	600	mA
Repetitive Peak Forward Current	$I_{FRM}$	700	mA
Non-repetitive Peak Forward Surge Current	$I_{FSM}$	1 4	A
		at t = 1 s at t = 1 $\mu$ s	
Power Dissipation	$P_D$	350	mW
Junction Temperature	$T_J$	150	$^\circ\text{C}$
Storage Temperature Range	$T_{STG}$	-55 to +150	$^\circ\text{C}$



# MMBD4148

## Silicon Epitaxial Planar Switching Diode

### Electrical Characteristics ( $T_A=25^\circ\text{C}$ )

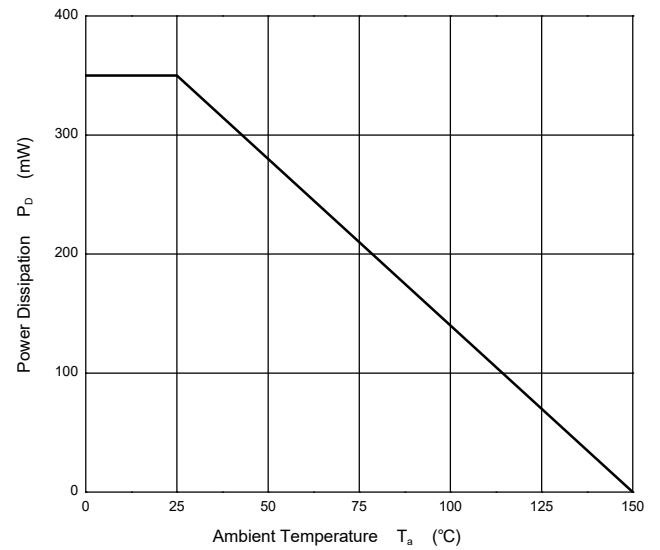
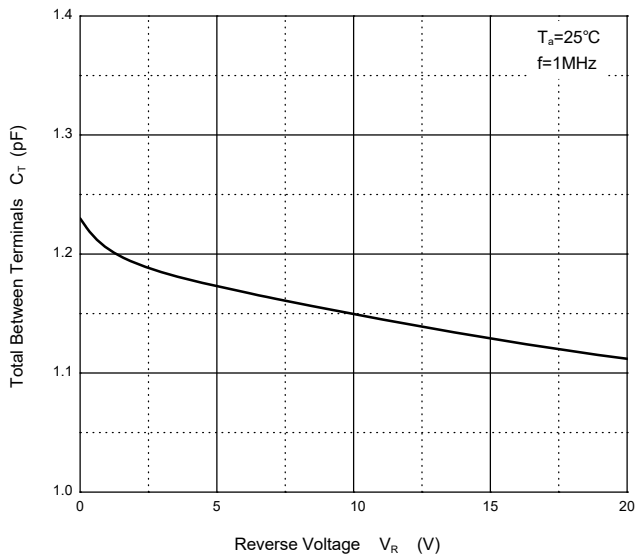
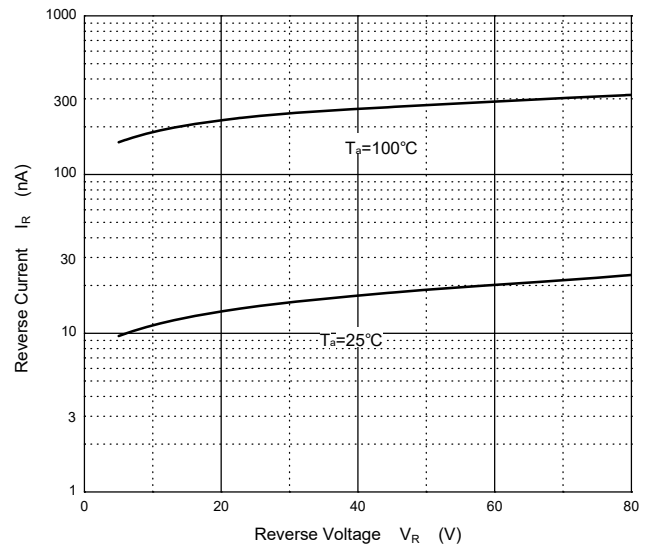
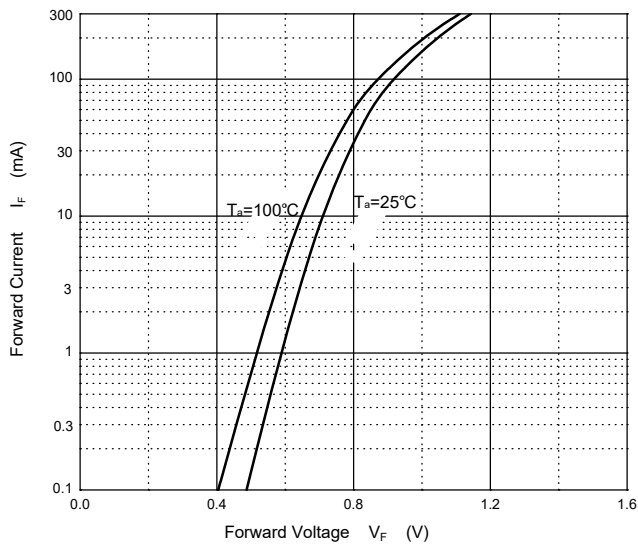
Parameter	Symbol	Min.	Max.	Unit
Forward Voltage at $I_F = 10\text{ mA}$	$V_F$	--	0.85	V
Reverse Breakdown Voltage at $I_R = 100\ \mu\text{A}$ at $I_R = 5\ \mu\text{A}$	$V_{(BR)R}$	100 75	-- --	V
Reverse Current at $V_R = 20\text{ V}$ at $V_R = 75\text{ V}$ at $V_R = 20\text{ V}$ , at $T_A = 150^\circ\text{C}$	$I_R$	-- -- --	25 1 50	nA $\mu\text{A}$ $\mu\text{A}$
Typical Junction Capacitance at $V_R = 0\text{ V}$ , $f = 1\text{ MHz}$	$C_j$	--	4	pF
Maximum Reverse Recovery Time at $I_F = 10\text{ mA}$ , $V_R = 6\text{ V}$ , $I_{RR} = 1\text{ mA}$ , $R_L = 100\ \Omega$	$T_{rr}$	--	4	nS



# MMBD4148

## Silicon Epitaxial Planar Switching Diode

### Typical Characteristic Curves





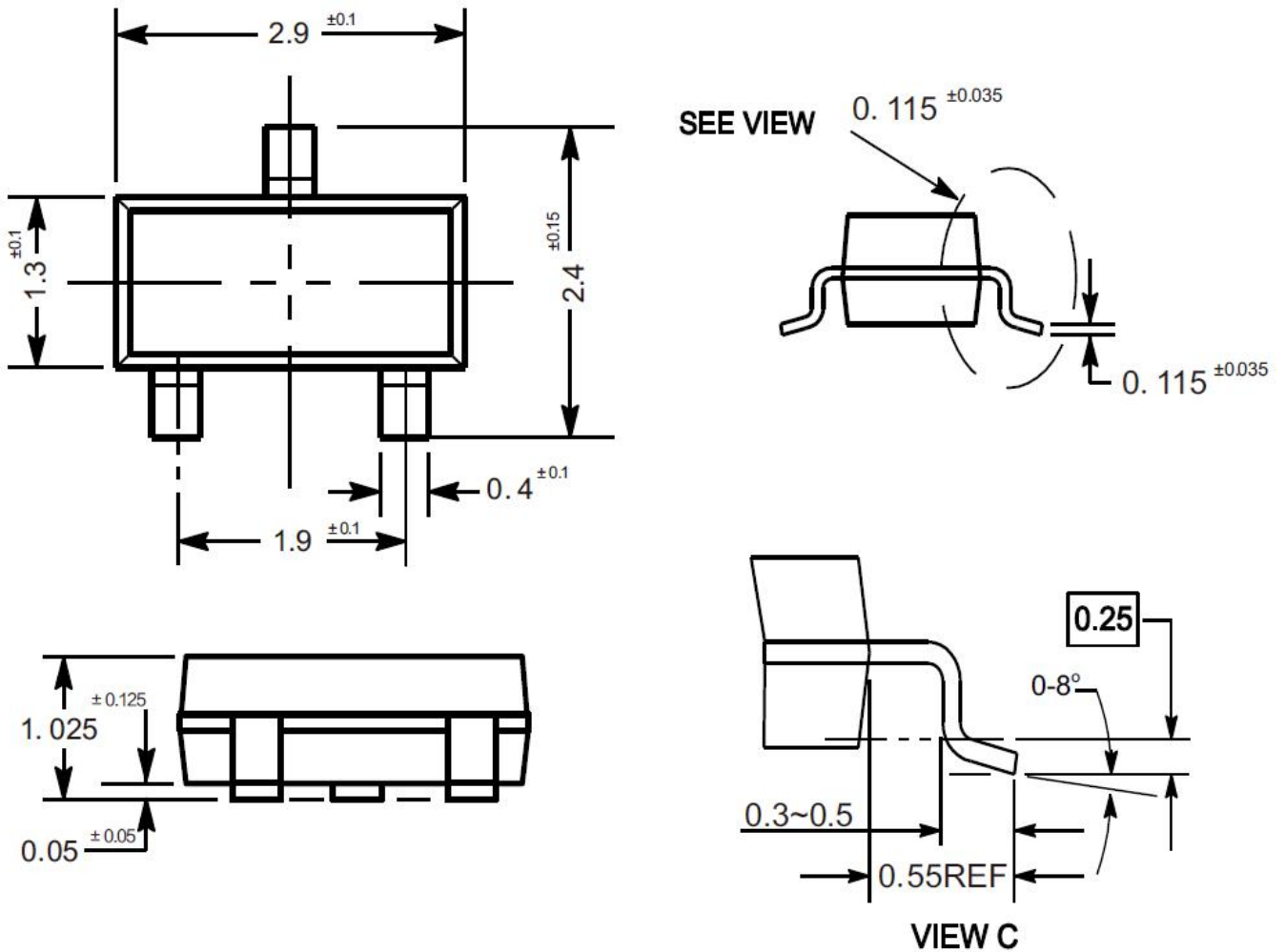
# MMBD4148

## Silicon Epitaxial Planar Switching Diode

### Package Outline

SOT-23

Dimensions in mm



### Ordering Information

Device	Package	Shipping
MMBD4148	SOT-23	3,000PCS/Reel&7inches

## X-ON Electronics

Largest Supplier of Electrical and Electronic Components

*Click to view similar products for [Diodes - General Purpose, Power, Switching category](#):*

*Click to view products by [Pingjingsemi manufacturer](#):*

Other Similar products are found below :

[MCL4151-TR3](#) [MMBD3004S-13-F](#) [RD0306T-H](#) [1N3611](#) [NTE156A](#) [NTE574](#) [NTE6244](#) [1SS193,LF](#) [1SS400CST2RA](#) [SDAA13](#)  
[SHN2D02FUTW1T1G](#) [LS4151GS08](#) [1N4449](#) [1N456A](#) [1N4934-E3/73](#) [1N914BTR](#) [RFUH20TB3S](#) [D291S45T](#) [BAV300-TR](#) [BAW56DWQ-](#)  
[7-F](#) [BAW56M3T5G](#) [BAW75-TAP](#) [MM230L-CAA](#) [IDW40E65D1](#) [JAN1N3600](#) [JAN1N4454UR-1](#) [LL4151-GS18](#) [SMMSD4148T3G](#)  
[BYW95B/A52A](#) [NSVDAN222T1G](#) [CDSZC01100-HF](#) [LL4150-M-08](#) [1N4454-TR](#) [BAV70HDW-7](#) [BAS28-7](#) [JANTX1N6640](#) [BAW56HDW-](#)  
[13](#) [BAS28 TR](#) [VS-HFA04SD60STR-M3](#) [NSVM1MA152WKT1G](#) [1SS388-TP](#) [RGP30D-E3/73](#) [VS-8EWF02S-M3](#) [BAV99TQ-13-F](#)  
[BAV99HDW-13](#) [MMDB30-E28X](#) [IDP20C65D2XKSA1](#) [LS4148](#) [IDV15E65D2](#) [NSVM1MA152WAT1G](#)