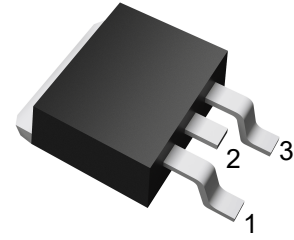


PJ7805TC

3-Terminal Voltage Regulator

TO-263

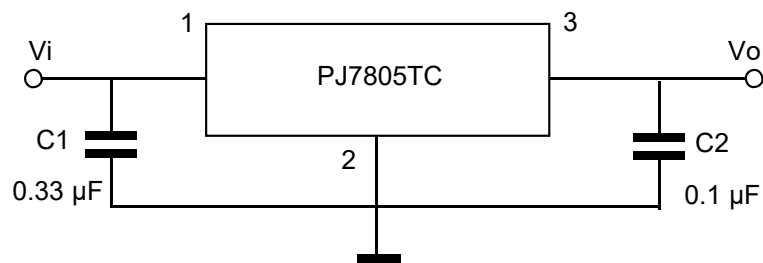


1. IN 2. GND 3. OUT

Maximum Ratings

Ratings at $T_A = 25^\circ\text{C}$ ambient temperature unless otherwise specified.

Parameter	Symbols	Value	Units
Input Voltage	V_I	35	V
Output Current	I_O	1.5	A
Power Dissipation	P_D	1.5	W
Operating Junction Temperature Range	T_{OPR}	0~125	$^\circ\text{C}$
Storage Temperature Range	T_{STG}	-55~150	$^\circ\text{C}$

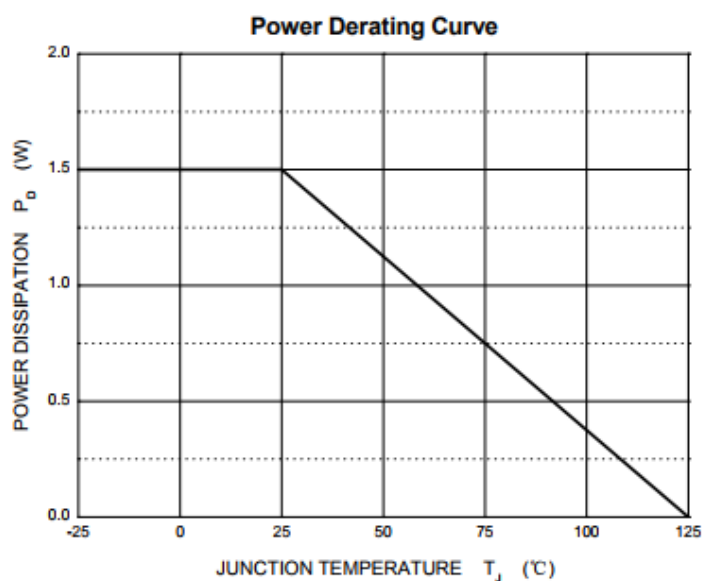
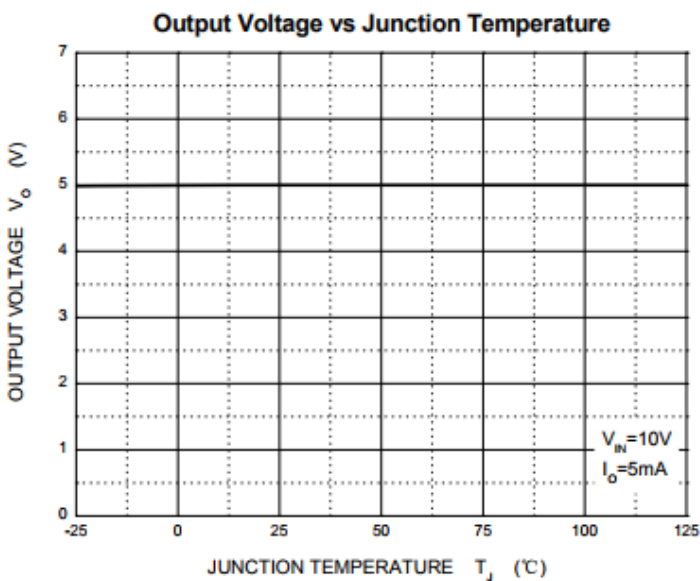
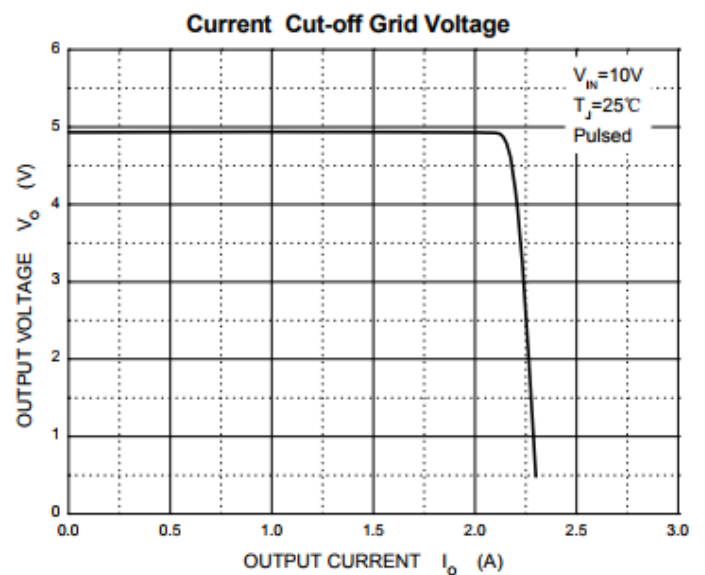
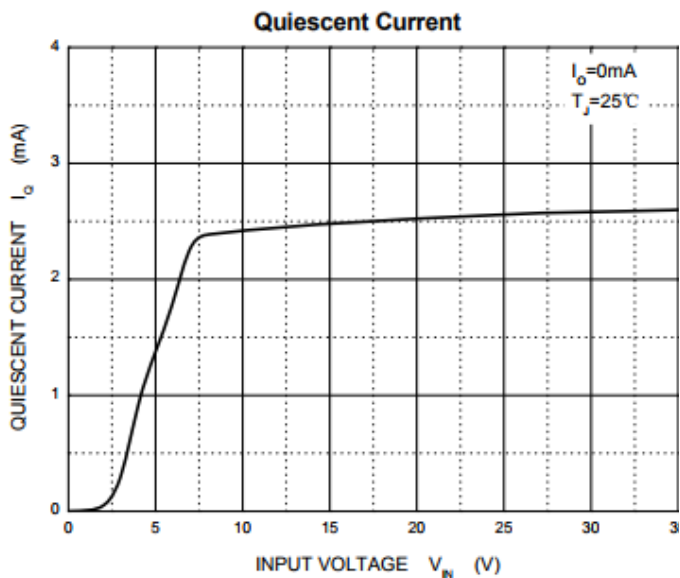
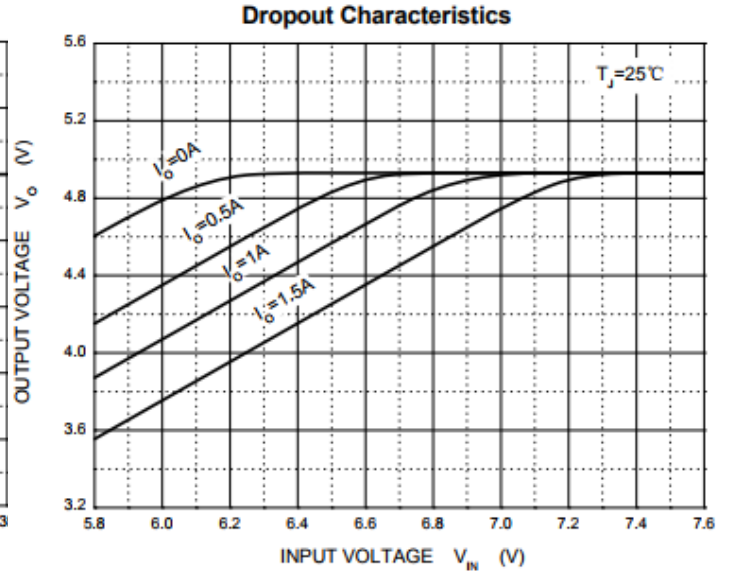
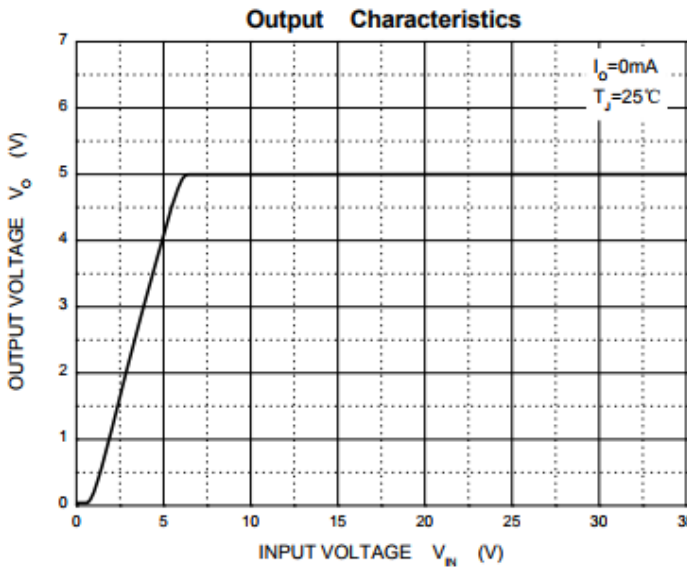


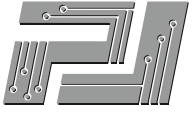
**Electrical Characteristics**Ratings at $T_J = 25^\circ\text{C}$, $V_I = 10\text{V}$, $I_O = 40\text{mA}$, $C_i = 0.33\mu\text{F}$, $C_o = 0.1\mu\text{F}$, unless otherwise specified.

Parameter	Symbols	Test Conditions	Min	Typ	Max	Unit
Output Voltage	V_O	$T_J = 25^\circ\text{C}$	4.80	5	5.20	V
		$5\text{mA} \leq I_O \leq 1\text{A}$ $V_I = 7\text{V to } 20\text{V}$	4.75	5	5.25	
Line Regulation	ΔV_O	$V_O = 7\text{ V to } 25\text{ V}$			100	mV
		$V_I = 8\text{ V to } 12\text{ V}$			50	mV
Load Regulation	ΔV_O	$I_O = 5\text{ mA to } 1.5\text{ A}$			100	mV
		$I_O = 250\text{ mA to } 750\text{ mA}$			50	mV
Ripple Rejection	RR	$V_I = 8\sim 18\text{ V}$, $f = 120\text{Hz}$	62			dB
Output Noise Voltage	V_N	$f = 10\text{Hz} \sim 100\text{KHz}$, $T_J = 25^\circ\text{C}$		42		μV
Dropout Voltage	V_D	$I_O = 1\text{A}$, $T_J = 25^\circ\text{C}$		2		V
Quiescent Current	I_Q	$T_J = 25^\circ\text{C}$			8	mA
Quiescent Current Change	ΔI_Q	$I_O = 5\text{ mA to } 1\text{ A}$			0.5	mA
		$V_I = 7\text{ V to } 25\text{ V}$			1.3	



Typical Characteristic Curves



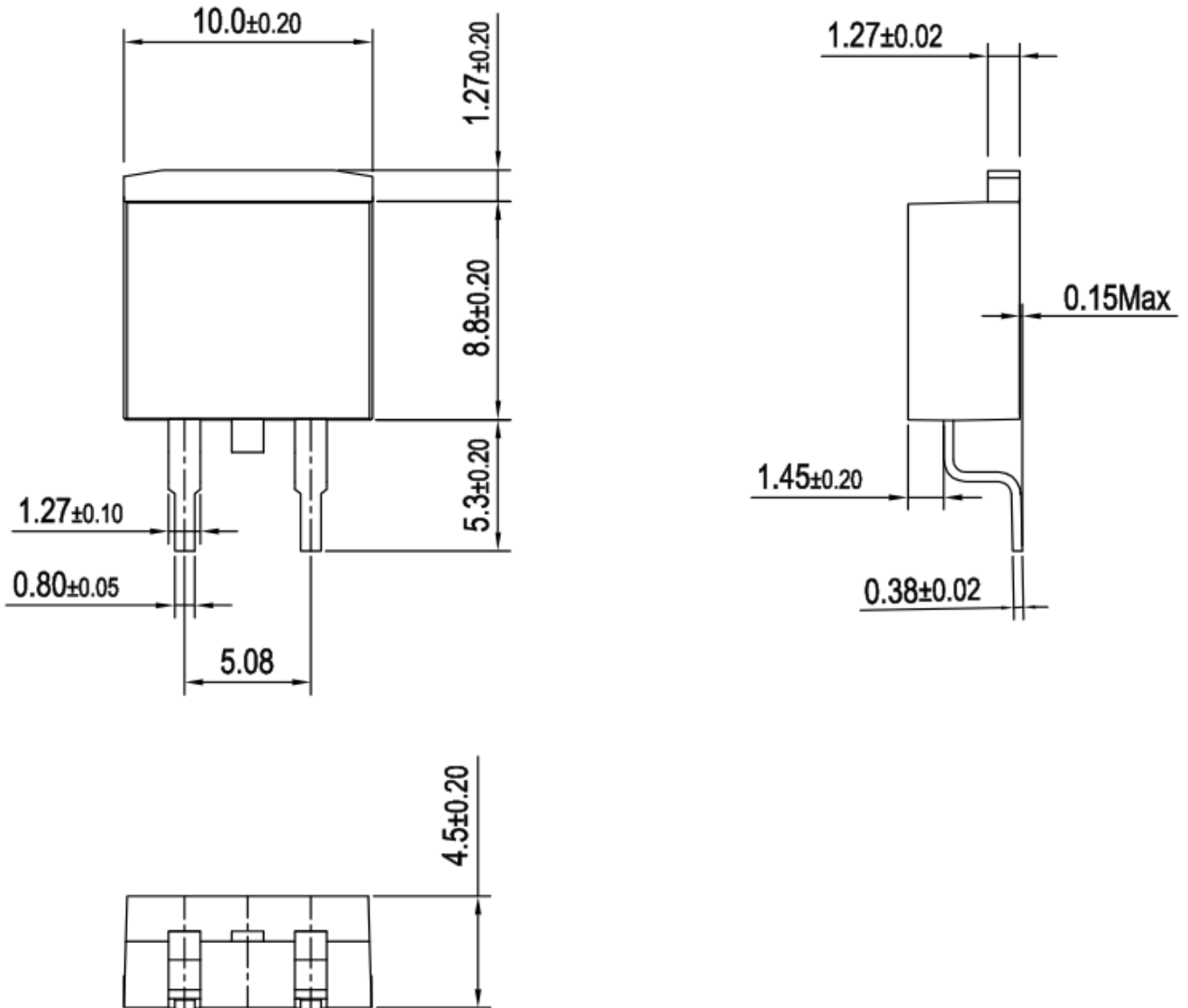


PJ7805TC

3-Terminal Voltage Regulator

Package Outline

TO-263
Dimensions in mm



X-ON Electronics

Largest Supplier of Electrical and Electronic Components

Click to view similar products for [pingjingsemi](#) manufacturer:

Other Similar products are found below :

[PJ78L15SQ](#) [PJ78L12SQ](#) [PJ1117SQ-3.3](#) [PJM2305PSA](#) [MMBT9013H](#) [PJM90H09NTF](#) [PJ78M09TE](#) [PJ71K33SQ](#) [LMV321](#) [PJM2301PSA-S](#)
[PJ71K50SQ](#) [PJ75AL30SQ](#) [2SB1132SQ-Q](#) [PJ75AL36SQ](#) [PJ79L05SQ](#) [MMBT3904](#) [2SD965ASQ-R](#) [PJ71K30SQ](#) [PJ73AL30SQ](#)
[PJ73AL36SQ](#) [2SB772SQ-P](#) [PJ73AL33SQ](#) [PJ7805TC](#) [PJ78L08SQ](#) [MMBT8050D\(1.5A\)](#) [PJ9193M33SE](#) [BCX53SQ-16](#) [MMBTA94](#)
[PJ71K50SC](#) [PJM84PSA](#) [PJ78M05TE](#) [2SB1188SQ-Q](#) [PJM3415PSA](#) [PJ75AL50SQ](#) [MMBT2907A](#) [MMBTA44](#) [TL431SQ](#) [PJ71K33SC](#)
[MMBTSC1623-L6](#) [PJ71K30SC](#) [PJM2302NSA-S](#) [MMBT9015C](#) [MMBT8550D\(1.5A\)](#) [MMBTSC1623-L7](#) [PJ73AL50SQ](#) [PJM2302NSA](#)
[PJM2301PSA](#) [MMBTSC945H](#) [MMBTSC3875Y](#) [SS14F-PJ](#)