



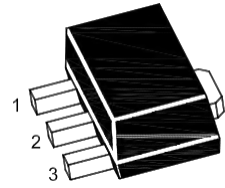
PJ78L12SQ-L

3-Terminal Voltage Regulator

Features

- Input voltage: up to 35V
- Output Voltage: 12V
- Output current up to 200 mA, internal thermal overload protection and short-circuit limiting.

SOT-89

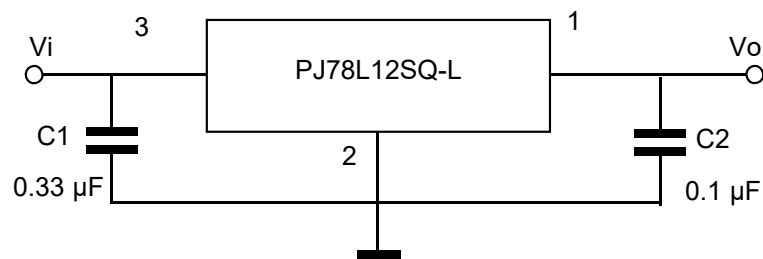


1. OUT 2. GND 3. IN

Maximum Ratings

Ratings at $T_A = 25^\circ\text{C}$ ambient temperature unless otherwise specified.

Parameter	Symbols	Value	Units
Input Voltage	V_I	35	V
Output Current	I_o	200	mA
Power Dissipation	P_D	500	mW
Operating Temperature Range	T_{OPR}	-40~125	$^\circ\text{C}$
Junction Temperature	T_J	150	$^\circ\text{C}$
Storage Temperature Range	T_{STG}	-55~150	$^\circ\text{C}$





PJ78L12SQ-L

3-Terminal Voltage Regulator

Electrical Characteristics

Ratings at $T_A = 25^\circ\text{C}$ ambient temperature, $0^\circ\text{C} \leq T_J \leq 125^\circ\text{C}$, $V_I = 19\text{V}$, $I_O = 40\text{mA}$, $C_i = 0.33\mu\text{F}$, $C_o = 0.1\mu\text{F}$, unless otherwise specified.

Parameter	Symbols	Test Conditions	Min	Typ	Max	Unit
Output Voltage	V_O		11.5	12	12.5	V
		$I_O = 1\text{mA to } 40\text{mA}$ $V_I = 14.5\text{V to } 27\text{V}$	11.4	12	12.6	V
		$I_O = 1\text{mA to } 70\text{mA}$ $V_I = 19\text{V}$	11.4	12	12.6	V
Line Regulation	ΔV_O	$V_I = 14.5\text{V to } 27\text{V}$ $T_J = 25^\circ\text{C}$			250	mV
		$V_I = 16\text{V to } 27\text{V}$ $T_J = 25^\circ\text{C}$			200	mV
Load Regulation	ΔV_O	$I_O = 1\text{mA to } 100\text{mA}$, $T_J = 25^\circ\text{C}$			100	mV
		$I_O = 1\text{mA to } 40\text{mA}$, $T_J = 25^\circ\text{C}$			50	mV
Ripple Rejection	RR	$V_I = 15\text{V to } 25\text{V}$, $T_J = 25^\circ\text{C}$ $f = 120\text{Hz}$	37			dB
Output Noise Voltage	V_N	$f = 10\text{Hz} \sim 100\text{KHz}$ $T_J = 25^\circ\text{C}$		70		μV
Dropout Voltage	V_D	$T_J = 25^\circ\text{C}$		1.7		V
Quiescent Current	I_Q	$T_J = 25^\circ\text{C}$			6	mA
Quiescent Current Change	ΔI_Q	$V_I = 16\text{V to } 27\text{V}$			1.5	mA
		$I_O = 1\text{mA to } 40\text{mA}$			0.1	mA

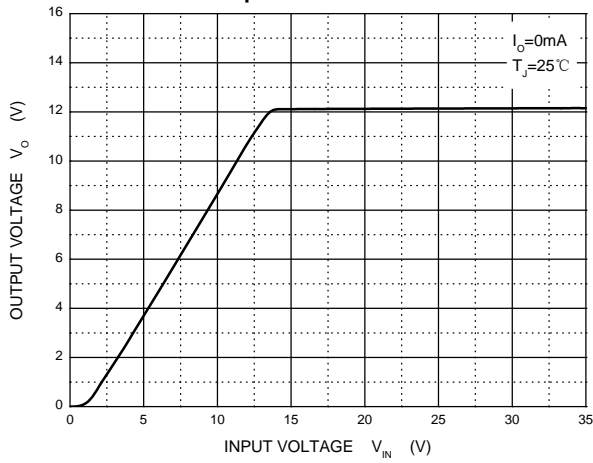


PJ78L12SQ-L

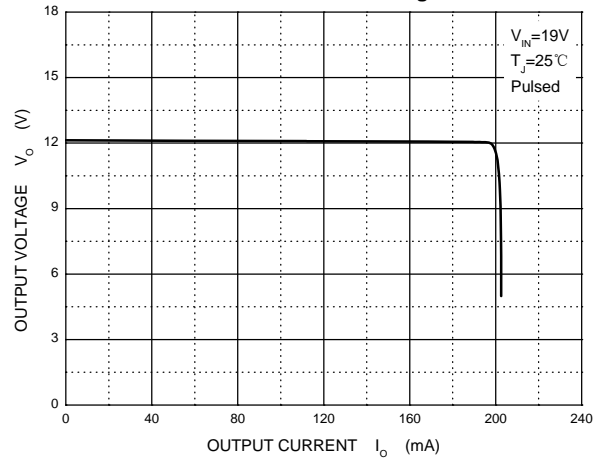
3-Terminal Voltage Regulator

Ratings and Characteristic Curves

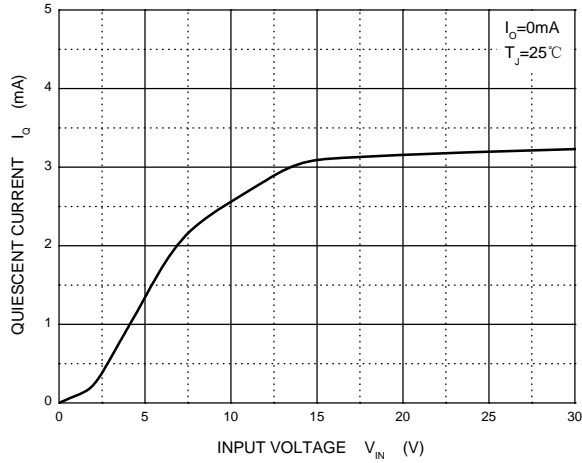
Output Characteristics



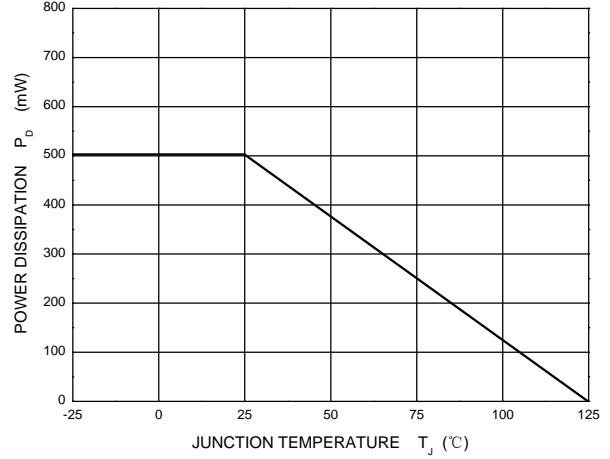
Current Cut-off Grid Voltage



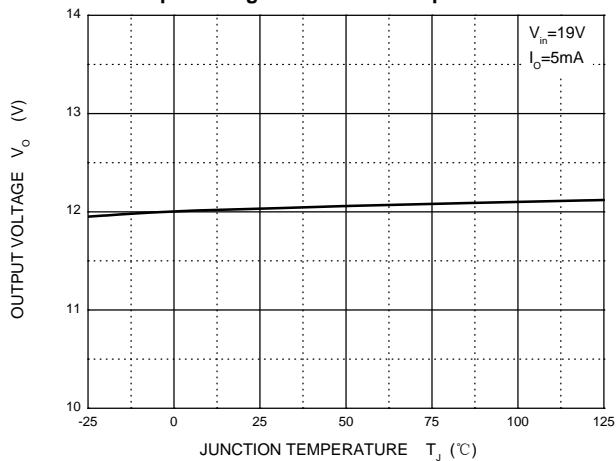
Quiescent Current



Power Derating Curve



Output Voltage vs Junction Temperature





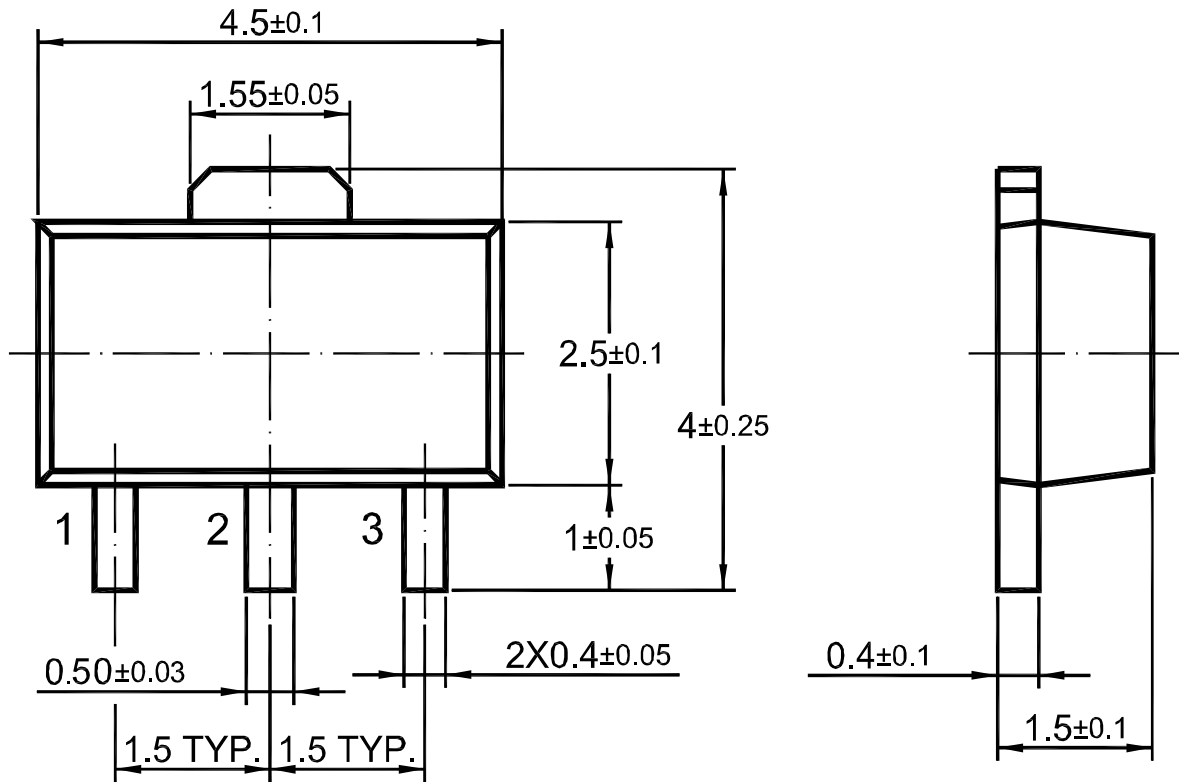
PJ78L12SQ-L

3-Terminal Voltage Regulator

Package Outline

SOT-89

Dimensions in mm



ORDERING INFORMATION

Device	Package	Shipping
PJ78L12SQ-L	SOT-89	1,000/ Tape & Reel (7 inches)

X-ON Electronics

Largest Supplier of Electrical and Electronic Components

Click to view similar products for [Linear Voltage Regulators](#) category:

Click to view products by [Pingjingsemi](#) manufacturer:

Other Similar products are found below :

[LV56831P-E](#) [LV5684PVD-XH](#) [MCDTSA6-2R](#) [L4953G](#) [L7815ACV-DG](#) [PQ3DZ53U](#) [LV56801P-E](#) [TCR3DF13,LM\(CT](#)
[TCR3DF39,LM\(CT](#) [TLE42794G](#) [L78L05CZ/1SX](#) [L78LR05DL-MA-E](#) [L78MR05-E](#) [033150D](#) [033151B](#) [090756R](#) [636416C](#)
[NCV78M15BDTG](#) [702482B](#) [714954EB](#) [TLE42794GM](#) [TLE42994GM](#) [ZMR500QFTA](#) [BA033LBSG2-TR](#) [NCV78M05ABDTRKG](#)
[NCV78M08BDTRKG](#) [NCP7808TG](#) [NCV571SN12T1G](#) [LV5680P-E](#) [CAJ24C256YI-GT3](#) [L78M15CV-DG](#) [L9474N](#)
[TLS202B1MBV33HTSA1](#) [L79M05T-E](#) [NCP571SN09T1G](#) [MAX15006AASA/V+](#) [MIC5283-5.0YML-T5](#) [L4969URTR-E](#) [L78LR05D-MA-E](#)
[NCV7808BDTRKG](#) [L9466N](#) [NCP7805ETG](#) [SC7812CTG](#) [NCV7809BTG](#) [NCV571SN09T1G](#) [NCV317MBTG](#) [MC78M15CDTT5G](#)
[MC78M12CDTT5G](#) [L9468N](#) [LT1054IS8#TRPBF](#)