

1-Line, Bi-directional, Ultra-low Capacitance Transient Voltage Suppressor

Features

- Stand-off voltage: 5V Max.
- Transient protection for each line according to IEC61000-4-2(ESD):±15kV(contact)IEC61000-4-5 (surge): 4A (8/20µs)
- Ultra-low capacitance: CJ = 0.35pF typ.
- Ultra-low leakage current: IR < 1nA typ.
- Low clamping voltage: VCL = 14V typ. @ IPP = 16A (TLP)
- Solid-state silicon technology

Applications

- USB 2.0 and USB 3.0
- HDMI 1.3, HDMI 1.4 and HDMI 2.0
- SATA and eSATA interface
- DVI
- IEEE 1394
- Portable Electronics and Notebooks

Descriptions

PESDR0511P0A is an ultra-low capacitance TVS (Transient Voltage Suppressor) designed to protect high speed data interfaces. It has been specifically designed to protect sensitive electronic components which are connected to data and transmission lines from over-stress caused by ESD (Electrostatic Discharge).

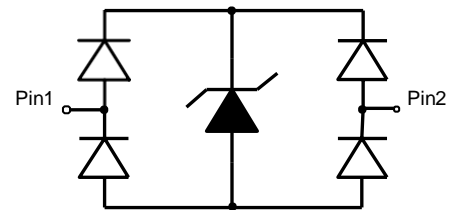
PESDR0511P0A incorporates one pair of ultra-low capacitance steering diodes plus a TVS diode.

PESDR0511P0A may be used to provide ESD protection up to ±15KV (contact discharge) according to IEC61000-4-2, and withstand peak pulse current up to 4A (8/20µs) according to IEC61000-4-5.

PESDR0511P0A is available in DFN0603-2 package. Standard products are Pb-free and Halogen-free.



DFN0603-2 (Bottom View)



Pin configuration



U5= Device code

Marking (Top View)

Order information

Part Number	Package	Shipping
PESDR0511P0A	DFN0603-2	10000/Tape & Reel

Absolute maximum ratings

Parameter	Symbol	Rating	Unit
Peak pulse power ($t_p = 8/20\mu s$)	P_{pk}	44	W
Peak pulse current ($t_p = 8/20\mu s$)	I_{PP}	4	A
ESD according to IEC61000-4-2 air discharge	V_{ESD}	± 15	kV
ESD according to IEC61000-4-2 contact discharge		± 15	
Junction temperature	T_J	125	$^{\circ}C$
Operating temperature	T_{OP}	-40~85	$^{\circ}C$
Lead temperature	T_L	260	$^{\circ}C$
Storage temperature	T_{STG}	-55~150	$^{\circ}C$

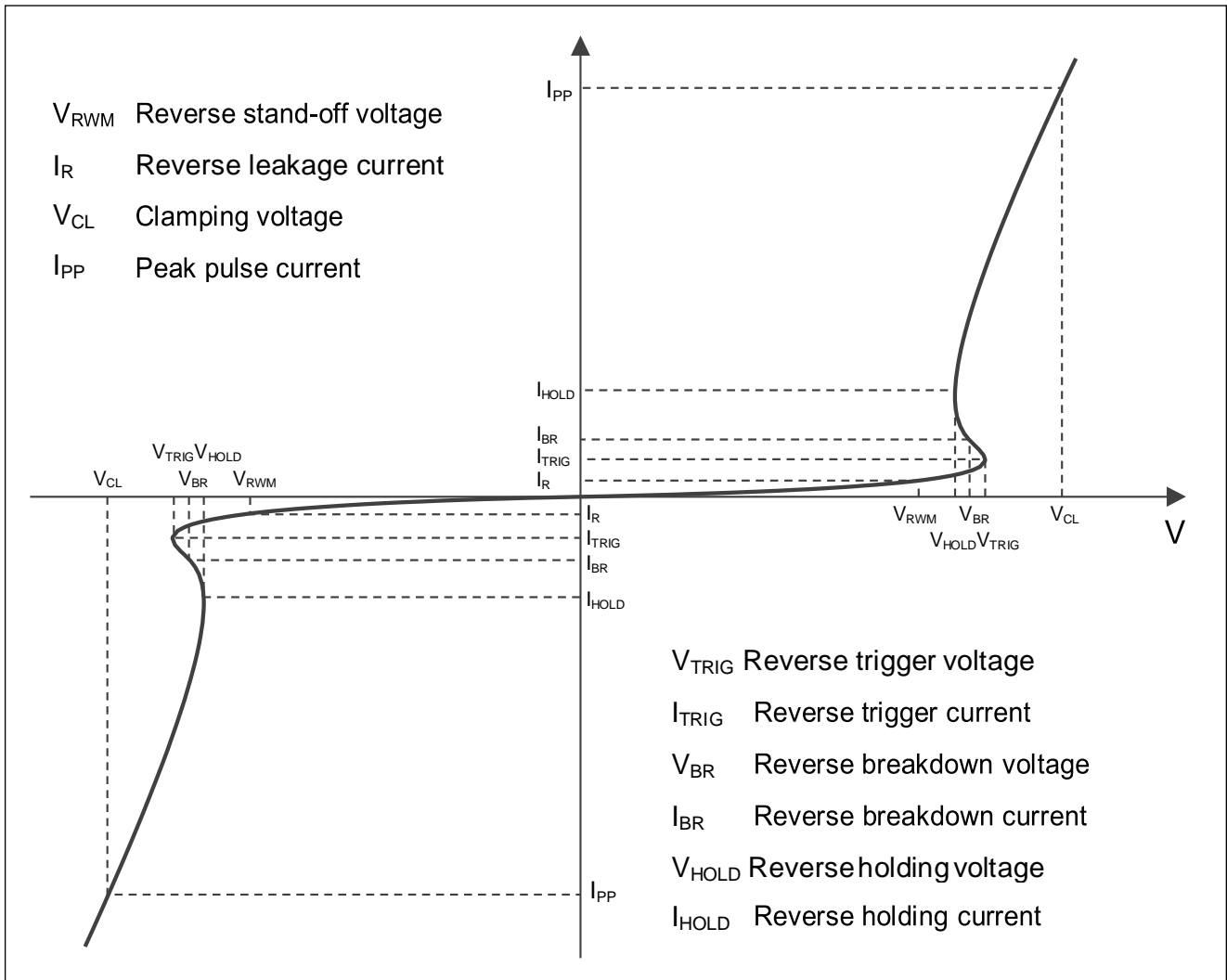
Electrical characteristics ($T_A = 25^{\circ}C$, unless otherwise noted)

Parameter	Symbol	Condition	Min.	Typ.	Max.	Unit
Reverse maximum working voltage	V_{RWM}				5.0	V
Reverse leakage current	I_R	$V_{RWM} = 5V$			50	nA
Reverse breakdown voltage	V_{BR}	$I_T = 1mA$	6.0	8.0		V
Clamping voltage ¹⁾	V_{CL}	$I_{PP} = 16A, t_p = 100ns$		14		V
Dynamic resistance ¹⁾	R_{DYN}			0.55		Ω
Clamping voltage ²⁾	V_{CL}	$V_{ESD} = 8kV$		14		V
Clamping voltage ³⁾	V_{CL}	$I_{PP} = 1A, t_p = 8/20\mu s$		8.3		V
		$I_{PP} = 4A, t_p = 8/20\mu s$		10		V
Junction capacitance	C_J	$V_R = 2.5V, f = 1MHz$		0.35	0.5	pF

Notes:

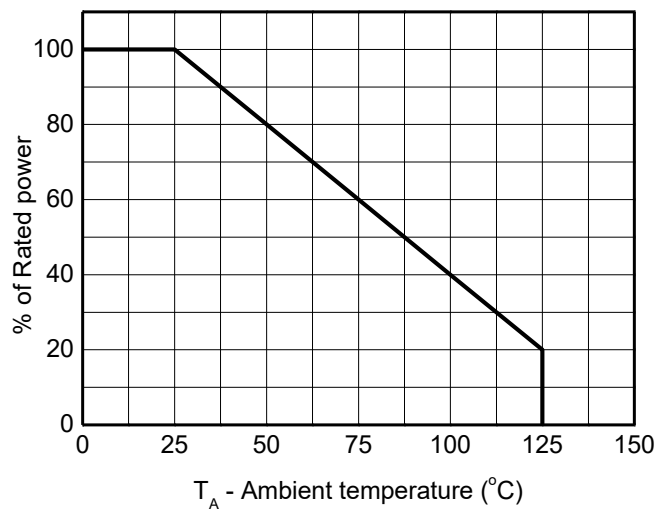
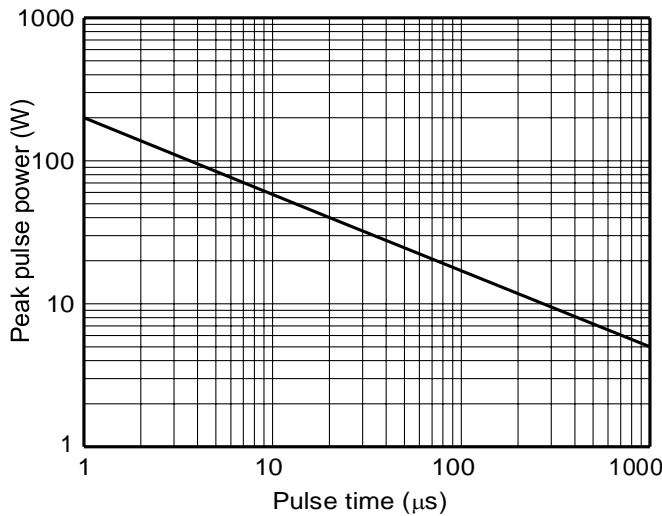
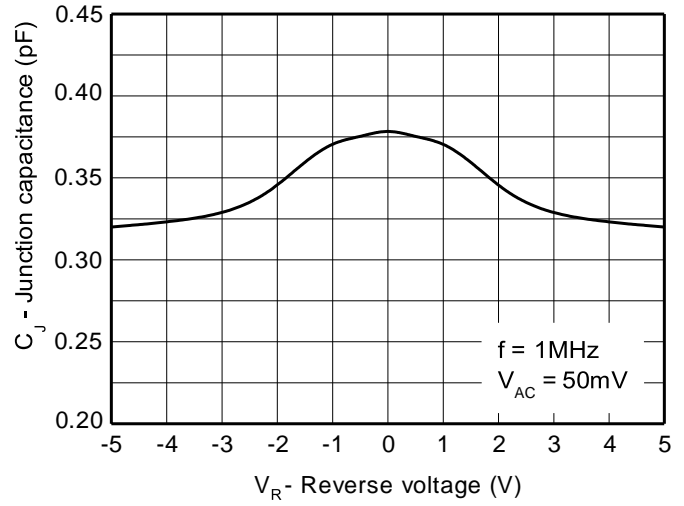
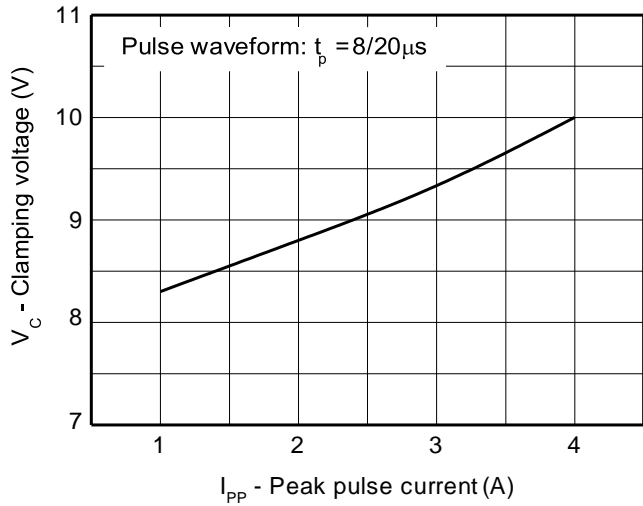
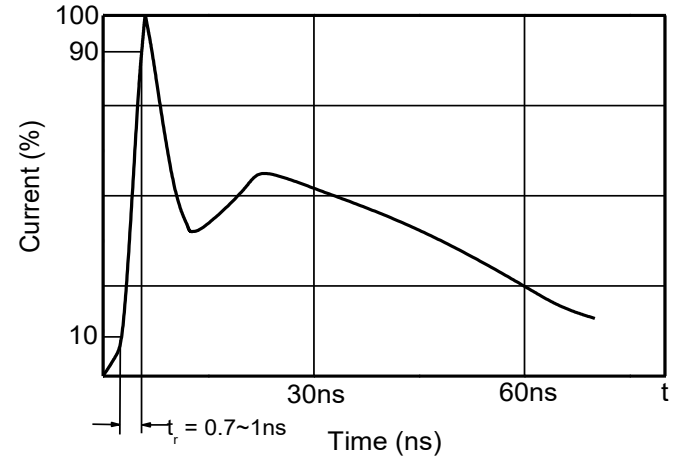
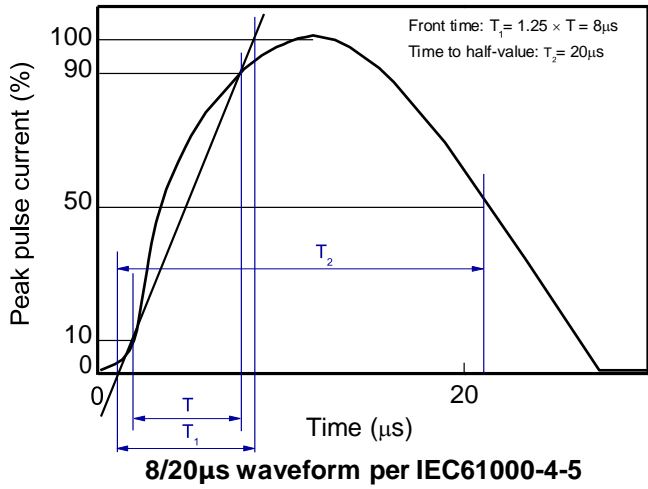
1. TLP parameter: $Z_0 = 50\Omega, t_p = 100ns, t_r = 2ns$, averaging window from 60ns to 80ns. R_{DYN} is calculated from 4A to 16A.
2. Contact discharge mode, according to IEC61000-4-2.
3. Non-repetitive current pulse, according to IEC61000-4-5.

Electrical characteristics ($T_A=25\text{ }^\circ\text{C}$, unless otherwise noted)

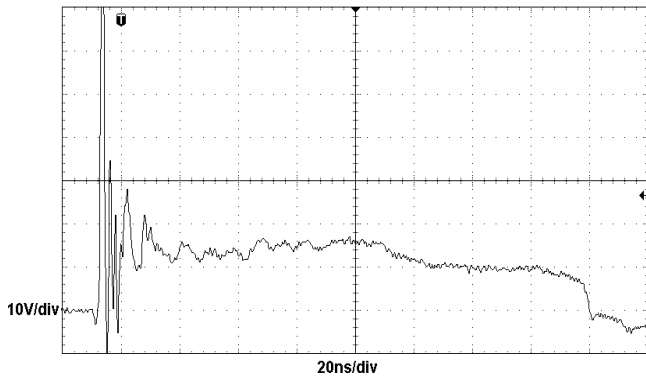


Definitions of electrical characteristics

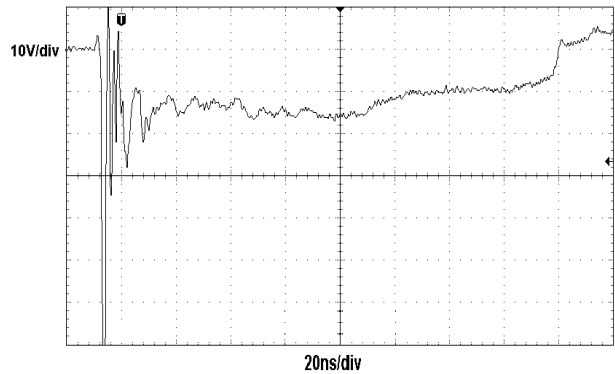
Typical characteristics ($T_A = 25\text{ }^\circ\text{C}$, unless otherwise noted)



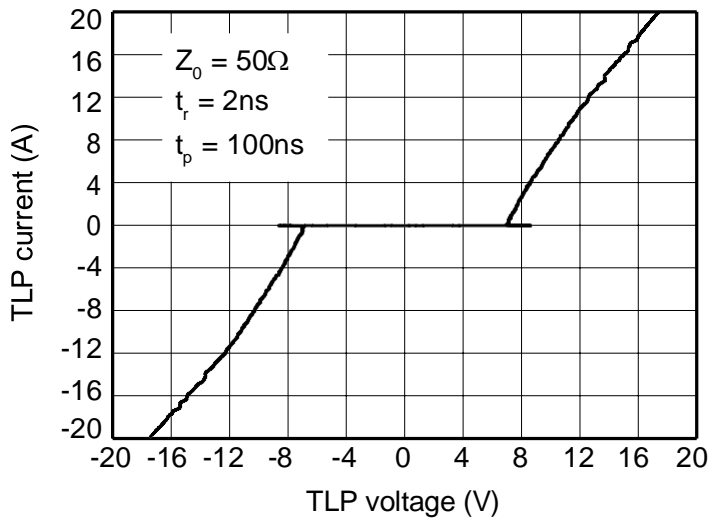
Typical characteristics ($T_A = 25\text{ }^\circ\text{C}$, unless otherwise noted)



ESD clamping
(+8kV contact discharge per IEC61000-4-2)



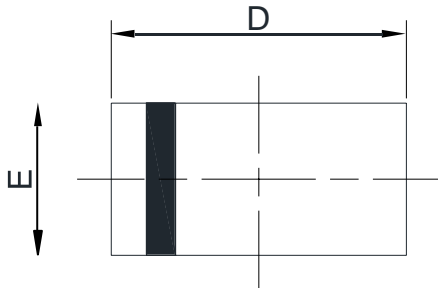
ESD clamping
(-8kV contact discharge per IEC61000-4-2)



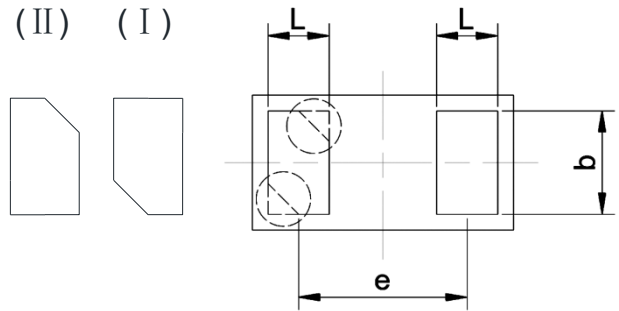
TLP Measurement

PACKAGE OUTLINE DIMENSIONS

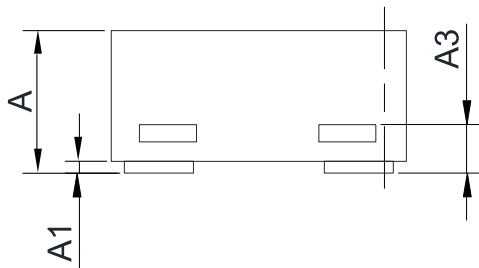
DFN0603-2



Top View



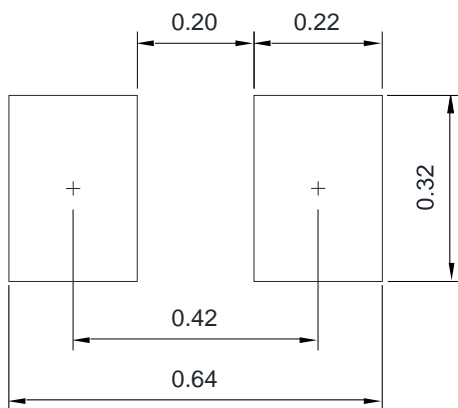
Bottom View



Side View

Symbol	Dimensions in Millimeters		
	Min.	Typ.	Max.
A	0.230	-	0.340
A1	0.000	-	0.050
A3	0.102 REF.		
D	0.550	0.600	0.670
E	0.250	0.300	0.370
b	0.215	-	0.295
e	0.400 BSC		
L	0.115	-	0.195

Recommend land pattern (Unit: mm)



Notes:

This recommended land pattern is for reference purposes only. Please consult your manufacturing group to ensure your PCB design guidelines are met.

X-ON Electronics

Largest Supplier of Electrical and Electronic Components

Click to view similar products for [ESD Suppressors / TVS Diodes category](#):

Click to view products by [PN SILICON manufacturer](#):

Other Similar products are found below :

[NTE4902](#) [P4SMAJ15A](#) [P4SMAJ26A](#) [SMAJ400CA-TP](#) [TGL34-47CA](#) [ESDAULC45-1BF4](#) [SM1605E3/TR13](#) [SMF20A-TP](#) [P4SMAJ12A](#)
[CPDUR24V-HF](#) [CPDQC5V0USP-HF](#) [CPDQC5V0-HF](#) [MPLAD30KP45CAE3](#) [MMBZ27VCLQ-7-F](#) [MMAD1108/TR13](#) [MPLAD30KP24A](#)
[ACPDQC5V0R-HF](#) [DFLT170A-7](#) [NTE4900](#) [NTE4926](#) [NTE4938](#) [SMF22A-TP](#) [SMF12A-TP](#) [SLVU2.8-TP](#) [SMLJ6.5CA-TP](#) [SMAJ6.5CA-](#)
[TP](#) [MMAD1108E3/TR13](#) [D5V0M1U2LP3-7](#) [SMAJ400A-TP](#) [AOZ8811DT-03](#) [AOZ8831DI-05](#) [AOZ8831DT-03](#) [SMAJ188CA](#) [3SMC33CA](#)
[BK](#) [CPDQC3V3C-HF](#) [CPDQC12VE-HF](#) [MPLAD30KP170CA](#) [82357120100](#) [5.0SMLJ15CA-TP](#) [5KP18A-TP](#) [P6KE8.2A-TP](#)
[MPLAD30KP43CAE3](#) [SMAJ43A-TP](#) [D5V0F6U8LP33-7](#) [TVS5501V10MUT5G](#) [5.0SMLJ24CA-TP](#) [SMAJ110CA-TP](#) [MPLAD15KP75CAE3](#)
[MMAD1103e3/TR13](#) [DFLT40AQ-7](#)