

**Schottky rectifier**

**Features**

- Low profile package
- Ideal for automated placement
- Ultra high-speed switching
- Low power losses, high efficiency
- Low forward voltage drop
- High surge capability
- High temperature soldering:  
260°C/10 seconds at terminals Component in accordance to RoHS 2002/95/1 and WEEE 2002/96/EC

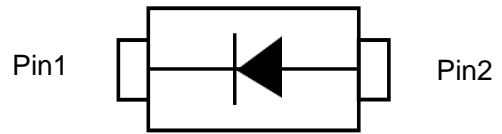
**SOD-323 Surface Mount**



SOD-323

**Mechanical Data**

- **Case:** SOD323 molded plastic
- **Terminals:** Solder plated, solderable per JESD22-B102
- **Polarity:** Laser band denotes cathode end



**Circuit Diagram**

**Absolute Maximum Ratings (T<sub>A</sub> = 25°C unless otherwise noted)**

Symbol	Parameter	Value	Units
V <sub>RRM</sub>	Maximum repetitive peak reverse voltage	40	V
V <sub>RMS</sub>	Maximum RMS voltage	28	V
V <sub>DC</sub>	Maximum DC blocking voltage	40	V
I <sub>F(AV)</sub>	Maximum average forward rectified current	1.0	A
I <sub>FSM</sub>	Peak forward surge current 8.3ms single half sine-wave superimposed on rated load	9	A
dv/dt	Voltage rate of change (rated V <sub>R</sub> )	10000	V/μs
R <sub>θJL</sub>	Thermal resistance from junction to lead	35	°C/W
T <sub>J</sub> , T <sub>STG</sub>	Operating junction and storage temperature range	- 65 to +125	°C

**Electrical Characteristics (T<sub>A</sub> = 25°C unless otherwise noted)**

Items	Test conditions	Symbol	Type	UNIT
Instantaneous forward voltage	I <sub>F</sub> = 1.0A	V <sub>F</sub>	0.55	V
Reverse current	V <sub>R</sub> = V <sub>DC</sub>	I <sub>R</sub>	T <sub>j</sub> = 25°C	0.1
			T <sub>j</sub> = 100°C	10

**Typical Performance Characteristics (T<sub>A</sub> = 25°C unless otherwise Specified)**

Fig 1. Forward Current Derating Curve

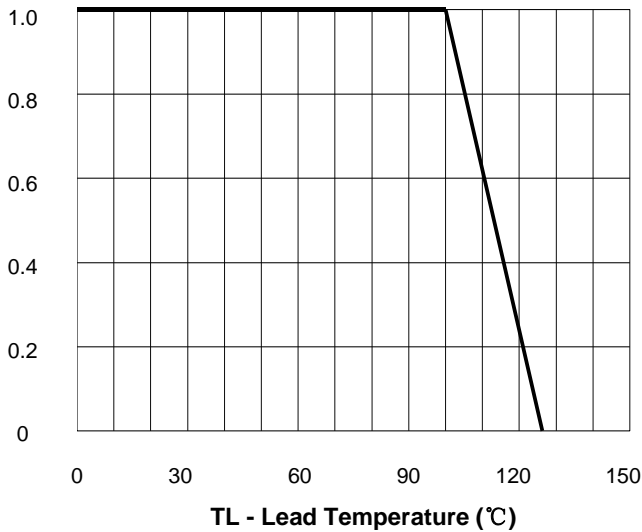


Fig 2. Maximum Non-Repetitive Peak Forward Surge Current

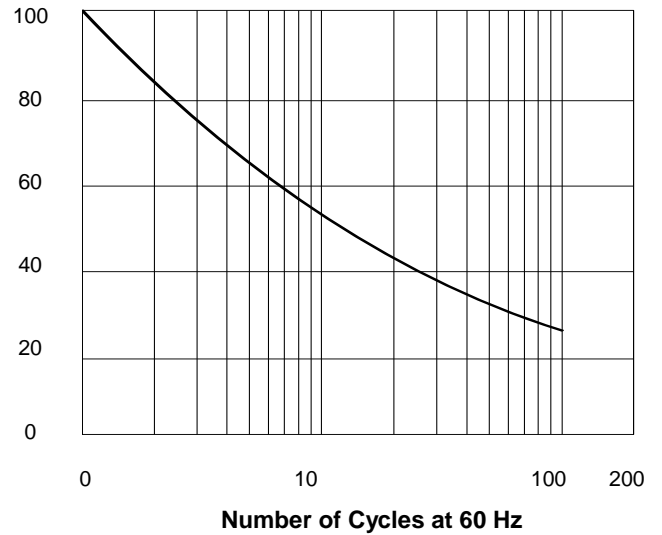


Fig 3. Typical Instantaneous Forward

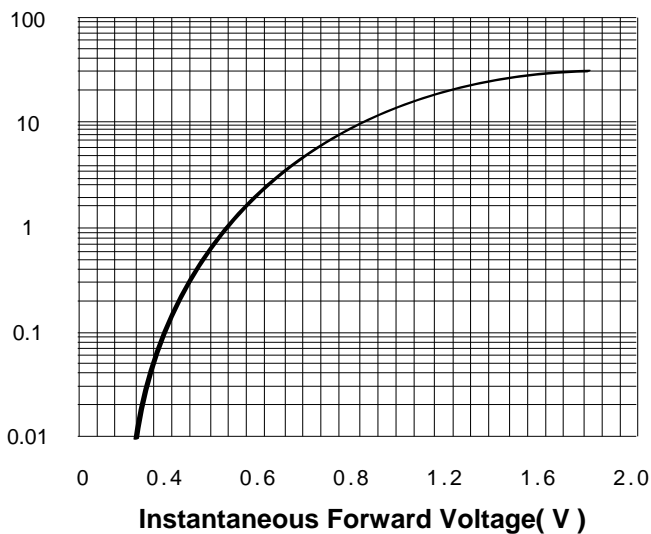
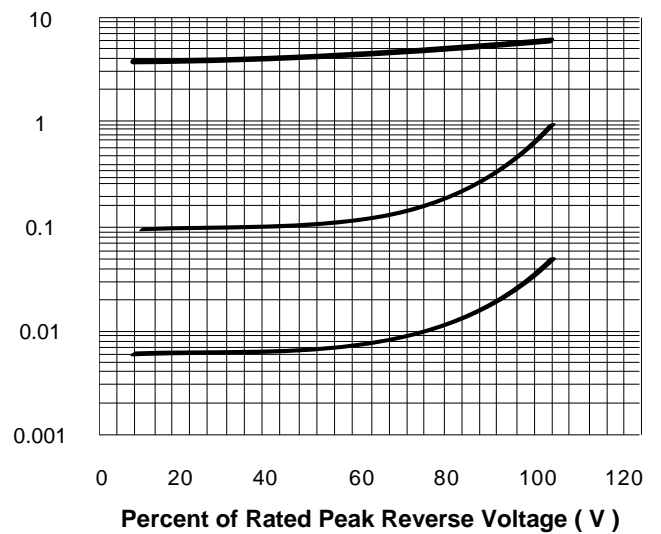
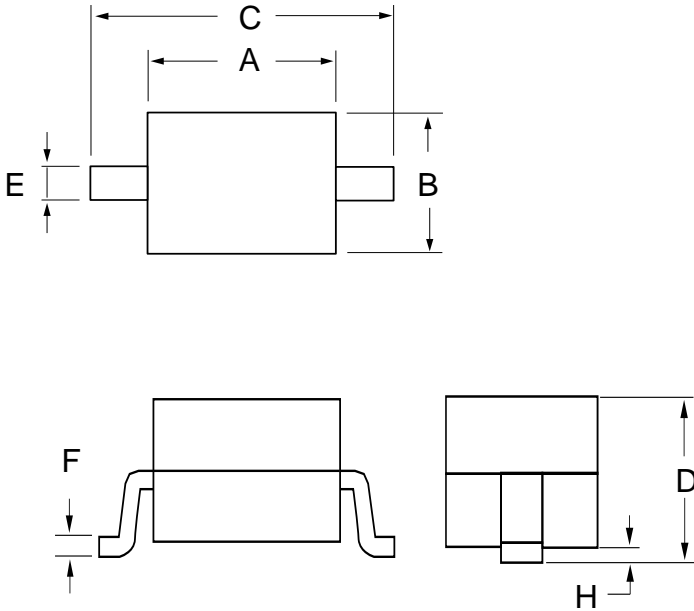


Fig 4. Typical Reverse Leakage Characteristics

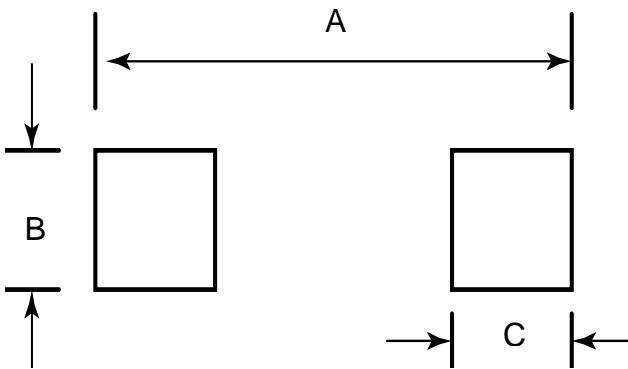


**SOD-323 Package Outline Drawing**



SYM	DIMENSIONS			
	MILLIMETERS		INCHES	
	MIN	MAX	MIN	MAX
A	1.60	1.95	0.063	0.077
B	1.10	1.50	0.043	0.059
C	2.30	2.90	0.095	0.112
D	0.80	1.15	0.031	0.045
E	0.20	0.40	0.008	0.016
F	0.10	0.15	0.004	0.006
H	-	0.10	-	0.004

**Suggested Land Pattern**



SYM	DIMENSIONS	
	MILLIMETERS	INCHES
A	3.00	0.110
B	0.60	0.024
C	0.60	0.024

## X-ON Electronics

Largest Supplier of Electrical and Electronic Components

*Click to view similar products for [Schottky Diodes & Rectifiers](#) category:*

*Click to view products by [PN SILICON](#) manufacturer:*

Other Similar products are found below :

[CUS06\(TE85L,Q,M\)](#) [MA4E2039](#) [D1FH3-5063](#) [MBR0530L-TP](#) [MBR10100CT-BP](#) [MBR30H100MFST1G](#) [MMBD301M3T5G](#) [PMAD1103-LF](#) [PMAD1108-LF](#) [RB160M-50TR](#) [RB520S-30](#) [RB551V-30](#) [DD350N18K](#) [DZ435N40K](#) [DZ600N16K](#) [BAS16E6433HTMA1](#) [BAS 3010S-02LRH E6327](#) [BAT 54-02LRH E6327](#) [IDL02G65C5XUMA1](#) [NSR05F40QNXT5G](#) [NSVR05F40NXT5G](#) [JANS1N6640](#) [SB07-03C-TB-H](#) [SB1003M3-TL-W](#) [SBAT54CWT1G](#) [SBM30-03-TR-E](#) [SBS818-TL-E](#) [SK32A-LTP](#) [SK33A-TP](#) [SK34A-TP](#) [SK34B-TP](#) [SMD1200PL-TP](#) [ACDBN160-HF](#) [SS3003CH-TL-E](#) [STPS30S45CW](#) [PDS3100Q-7](#) [GA01SHT18](#) [CRS10I30A\(TE85L,QM\)](#) [MBR1240MFST1G](#) [MBRB30H30CT-1G](#) [BAS28E6433HTMA1](#) [BAS 70-02L E6327](#) [HSB123JTR-E](#) [JANTX1N5712-1](#) [VS-STPS40L45CW-N3](#) [DD350N12K](#) [SB007-03C-TB-E](#) [SB10015M-TL-E](#) [SB1003M3-TL-E](#) [SK110-LTP](#)