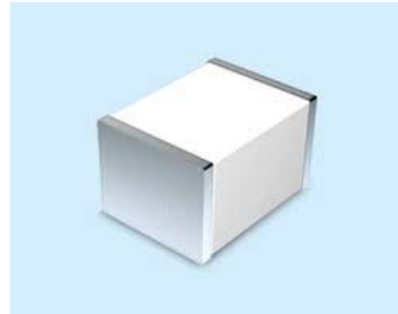


Gas Discharge Tube – SS201N

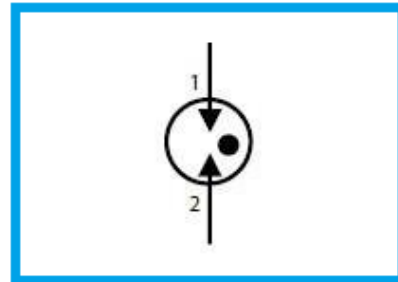
Features

- DC Spark-over voltage: 200V
- Low Capacitance
- Micro-Gap Design
- Stable breakdown voltage
- RoHS & HF compliant
- High holdover voltage
- High insulation resistance
- Large absorbing transient current capability.



Applications

- Communication equipment
- Test equipment
- Data lines
- CATV equipment
- Power Supplies
- Telecom SLIC protection
- Telecommunications

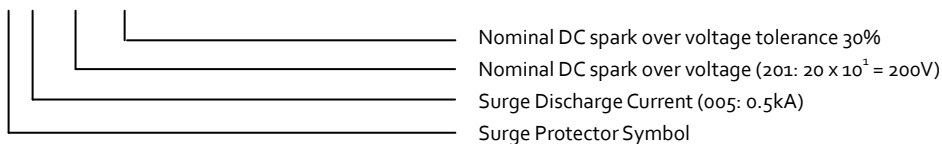


General Characteristics Definition

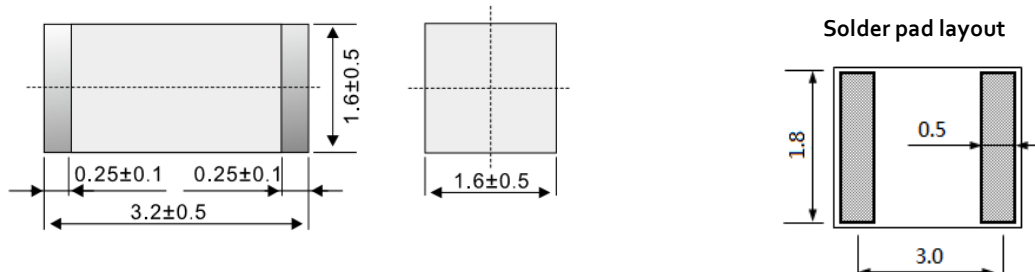
- Operating temperature: -40 ~ 85°C
- Storage temperature: -40 ~ 85°C

Part Number Code

S S 201 N



Physical Dimensions



Note:

1. All dimensions are in millimeters.
2. No marking on the device.

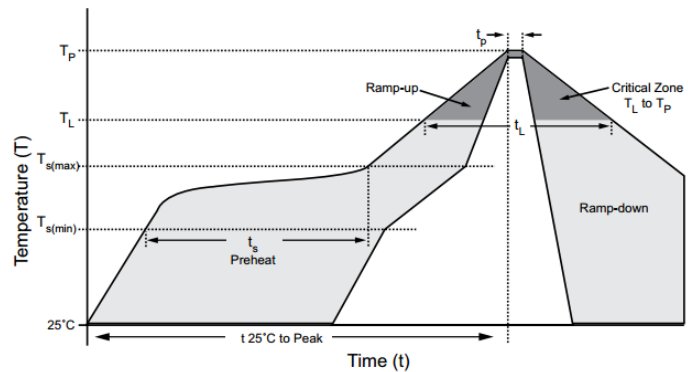
Gas Discharge Tube – SS201N

Electrical Characteristics

Part Number	DC Spark-over Voltage @ 100V/S	Impulse Spark-over Voltage @ 1kV/μS	Impulse Discharge Current	Impulse Life Test	Minimum Insulation Resistance Test @ 100 Vdc	Maximum Capacitance @ 1.0 MHz	UL Certification
	(V)	(V)	8/20 μs 10 Hits (kA)	8/20 μs 300 Hits (A)			
SS201N	200±30%	≤750	0.5	100	1	0.5	Pending

Lead Free Reflow Soldering Recommendations

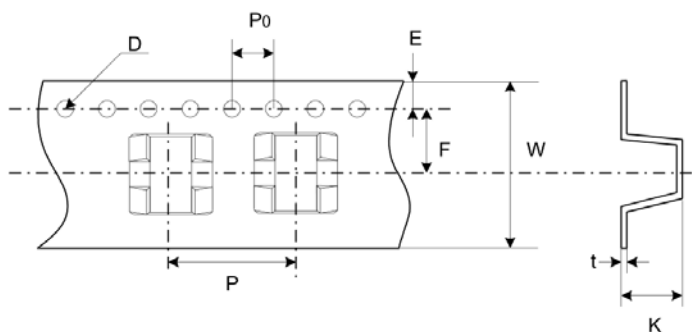
Preheat	
- Temperature Min (Tsmin)	150°C
- Temperature Max (Tsmax)	200°C
- Time (Tsmin to Tsmax)	60-180 seconds
- Average Ramp-Up Rate	1~3°C/second
Peak Temperature	260°C max.
Time within 5°C of actual Peak Temperature (tp)	40 seconds max.
Ramp-Down Rate	6 °C /second max.



Note: If the wave soldering temperatures exceed the recommended profile, devices may not meet the performance requirements.

Packaging Information

Part Number	Quantity	
	EA/Roll	EA/Box
SS201N	2000	6000



Dimension	Millimeters
P	8.0±0.1
P0	4.0±0.1
D	1.55±0.05
E	1.75±0.1
F	5.45±0.1
W	12.0±0.3
T	0.3±0.05
K	2.0±0.1

X-ON Electronics

Largest Supplier of Electrical and Electronic Components

Click to view similar products for [polytronics manufacturer](#):

Other Similar products are found below :

[SLD370GF-C](#) [HVR600P160CF](#) [SP3500SC](#) [RLD16P250GF](#) [AMPA43A](#) [RLD72P090XF](#) [SMD1206P025TF](#) [PT0672NH](#) [ASMDJ26CA](#)
[SMFD1206P250](#) [SMAJ15CA](#) [ASMBJ16CA](#) [SMD1812P050TF/30](#) [SMD2920P260TF/24](#) [RLD60P185XF](#) [SMD2920P400TF](#)
[RLD60P050XMF](#) [AMPA26CA](#) [RLD30P110UMF](#) [RLD60P160XMF](#) [SMBJ30CA](#) [SMBJ13A](#) [RLD16P700GMF](#) [SMD1812P200TF](#)
[ASMBJ51CA](#) [RLD16P500GF](#) [RLD60P050XF](#) [ASMBJ24CA](#) [RLD16P400GMF](#) [5.0SMDJ33CA](#) [PT05D5CE](#) [5.0SMDJ85CA](#) [ASMCJ70CA](#)
[SMD1210P150TF](#) [ASMCJ24CA](#) [SMD1812P110TF](#) [SMBJ6.0CA](#) [SHV2920P500-30-AA](#) [AMPA33CA](#) [SMD1812P125TF/16](#) [SMF6.0A](#)
[SMBJ33CA](#) [SMD2920P200TF/24](#) [PVR10D101KJ-SB-3.0](#) [SLT270GF-AL](#) [SLT500RUF-UC](#) [SLT420RF-AG](#) [SLT270RF-AD](#) [SMBJ20CA](#)
[SMD1812P160TF/8\(4L\)](#)