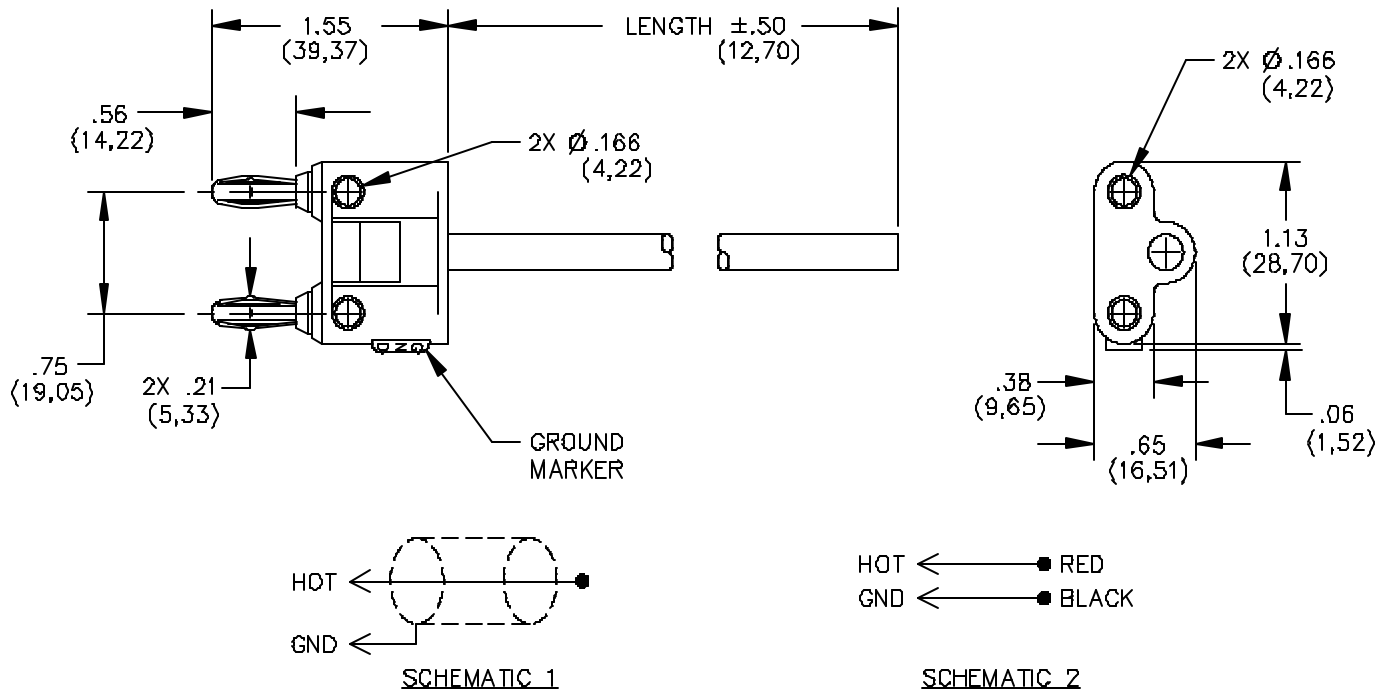


Model 1326 Double Banana Plug One End Only



Part Number	Schematic	Cable Type	Diameter	Impedance	Length
1326-A-60	2	Twisted Pair	.250" (6,35 mm)	-	60" (152,4 cm)
1326-C-60	1	RG58C/U	.195" (4,95 mm)	50 Ohms	60" (152,4 cm)

FEATURES:

- This double banana plug cable is designed to be used with all standard .166" (4mm) diameter banana jacks.
- These jacks are usually spaced at .75" (19mm) apart. Pomona's double banana plugs can be used with most digital multimeters that have the common and volt-ohm jacks at the standard spacing.
- This cable is also suited for use with power supplies that have binding post outputs
- The Pomona Banana Plug is well known for durability and reliability.
- We take considerable pride in the materials and workmanship that go into this plug.

- The one-piece Beryllium Copper leaf spring with hard nickel plating is swaged into the solid brass banana plug body.

MATERIALS:

The plug is insert molded with black polypropylene (1326-C-).

The plug is insert molded with gray polypropylene (1326-A-).

RATINGS:

Operating Temperature: +55° C (+131° F) Max.

1326-A 300VAC/424VDC

1326-C 500VRMS

ORDERING INFORMATION: Model 1326

All dimensions are in inches. Tolerances (except noted): .xx = ±.02" (.51 mm), .xxx = ±.005" (.127 mm).

All specifications are to the latest revisions. Specifications are subject to change without notice.

Registered trademarks are the property of their respective companies. Made in USA

X-ON Electronics

Largest Supplier of Electrical and Electronic Components

Click to view similar products for [Test Plugs & Test Jacks](#) category:

Click to view products by [Pomona](#) manufacturer:

Other Similar products are found below :

[01-2601-4-0210](#) [01-2601-4-0212](#) [01-2604-4-0212](#) [01-2604-5-0210](#) [01-2150-1-0312](#) [01-2350-1-02](#) [01-2352-1-02](#) [01-2368-1-02](#) [01-2604-4-0210](#) [01-2604-5-0212](#) [01-2606-4-0210](#) [01-2606-4-0212](#) [01-2606-5-0212](#) [M39024/10-01G](#) [M39024/10-17G](#) [M39024/11-09G](#) [M39024/11-42](#) [M39024/11-43](#) [M39024/12-08](#) [707-5311](#) [707-5402-01-19](#) [707-5410](#) [923739-40-I](#) [R644543000](#) [R948161000](#) [R999351000](#) [1408-4](#) [1499-101](#) [1533-1](#) [1659559](#) [1659567](#) [1663921](#) [1663939](#) [1696-102](#) [174-R825B-EX](#) [NYS508-BU](#) [NYS508-O](#) [211-101](#) [RS100GBL](#) [RS250GBL](#) [251-102](#) [25-2251-2-03](#) [25-2259-2-03](#) [923743-16-I](#) [923743-24-I](#) [923743-28-I](#) [2854-BLU](#) [2970-BLK](#) [30-443G](#) [1680](#)