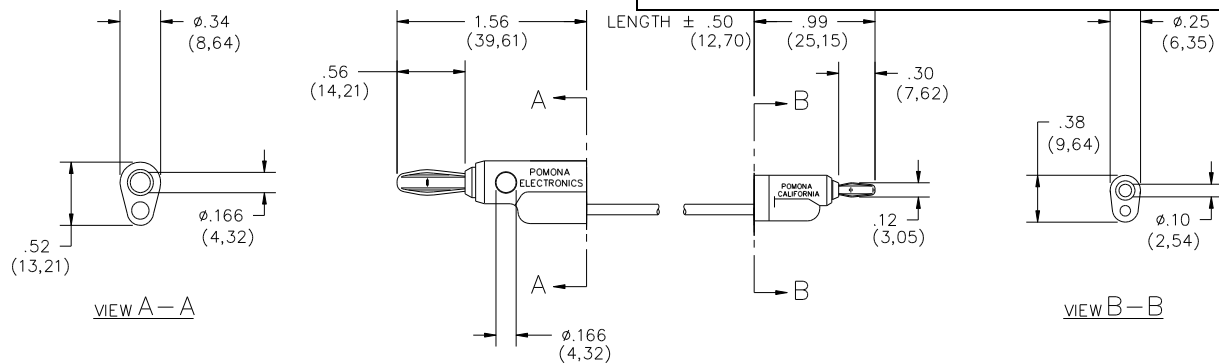


## Model 3014 Stacking Banana Plug To Miniature Stacking Banana Plug



### FEATURES:

- Converts a standard Banana Jack to a Mini Banana Plug or converts a Mini Banana Jack to a standard Banana Plug.
- Cross stacking type Banana Jack, vertical stacking Banana and Mini Banana Plug.

### MATERIALS:

Conn: Stacking Banana Plug

Material: Spring, Beryllium Copper per QQ-C-533, Alloy 172, Cond. HT.

Plug Body – Brass per QQ-B-626, Alloy 360, ½ Hard.

Finish: Nickel plated per QQ-N-290, Class 2, 200/300 microinches.

Insulation: Polypropylene molded to plug body and wire. Color matches color of wire.

Marking: “POMONA ELECTRONICS POMONA CALIFORNIA.”

Wire: 20 AWG, stranding 41 x 36 t.c., PVC insulated, 2.1 (.087) O.D.

Color: See Ordering Information.

Marking: “POMONA 3014-XX-\*”

Conn: Miniature Stacking Banana Plug

Material: Spring - Beryllium Copper per QQ-C-533, Alloy 172, Cond. HT.

Plug Body – Brass per QQ-B-626, Alloy 360, ½ Hard.

Finish: Gold plated per MIL-G-45204, Type II, Class 00 over electroless nickel

Insulation: Polypropylene molded to plug body and wire. Color matches color of wire.

Marking: “POMONA ELECTRONICS POMONA CALIFORNIA.”

### RATINGS:

Operating Temperature: + 55°C. (+131°F.) Max.

Operating Voltage: Hand-held testing: 30VAC/60VDC Max.

Hands free testing in controlled voltage environments: 3000 WVDC Max.

Current: 5 Amperes

### ORDERING INFORMATION: Model 3014-XX-\*

XX = Cable Lengths, Standard Lengths. 36” (914), & 60” (1524).

Additional lengths and colors can be quoted upon request. \*= Color, -0 Black, -2 Red.

All dimensions are in inches. Tolerances (except noted): .xx = ±.02” (.51 mm), .xxx = ± .005” (.127 mm).

All specifications are to the latest revisions. Specifications are subject to change without notice.

Registered trademarks are the property of their respective companies. Made in USA

## X-ON Electronics

Largest Supplier of Electrical and Electronic Components

*Click to view similar products for [Test Leads](#) category:*

*Click to view products by [Pomona](#) manufacturer:*

Other Similar products are found below :

[795-2384-10-25](#) [1301430020](#) [15107](#) [1510-24-105](#) [15308](#) [15408](#) [15302](#) [15307](#) [15407](#) [15409](#) [BU-1149-A-36-0](#) [BU-1481-E-12-0](#) [BU-1481-E-24-0](#) [1927617](#) [2450](#) [2524-A-60](#) [LB1F-2R-RED](#) [LB1F-2R-YLW](#) [2500](#) [2524-A-48](#) [2977-J-48](#) [R948131000](#) [380200](#) [BU-1449-E-12-2](#) [BU-1480-E-24-0](#) [BU-1481-E-12-2](#) [BU-1481-E-24-2](#) [LB1F-2R-BLK](#) [LB1F-2R-BLUE](#) [LB1F-2R-WHT](#) [6345](#) [6432](#) [EM3782-24-3#](#) [R948161002](#) [R948160002](#) [R948170002](#) [R948171002](#) [R948163002](#) [973604100](#) [934160101](#) [934160100](#) [R948174000](#) [CT3269](#) [CT3258](#) [CT3158-100](#) [HSPL 8568/AWG16/200/RT](#) [HSPL 8568/AWG16/200/SW](#) [28.0119-10020](#) [28.0127-05025](#) [28.0127-20025](#)