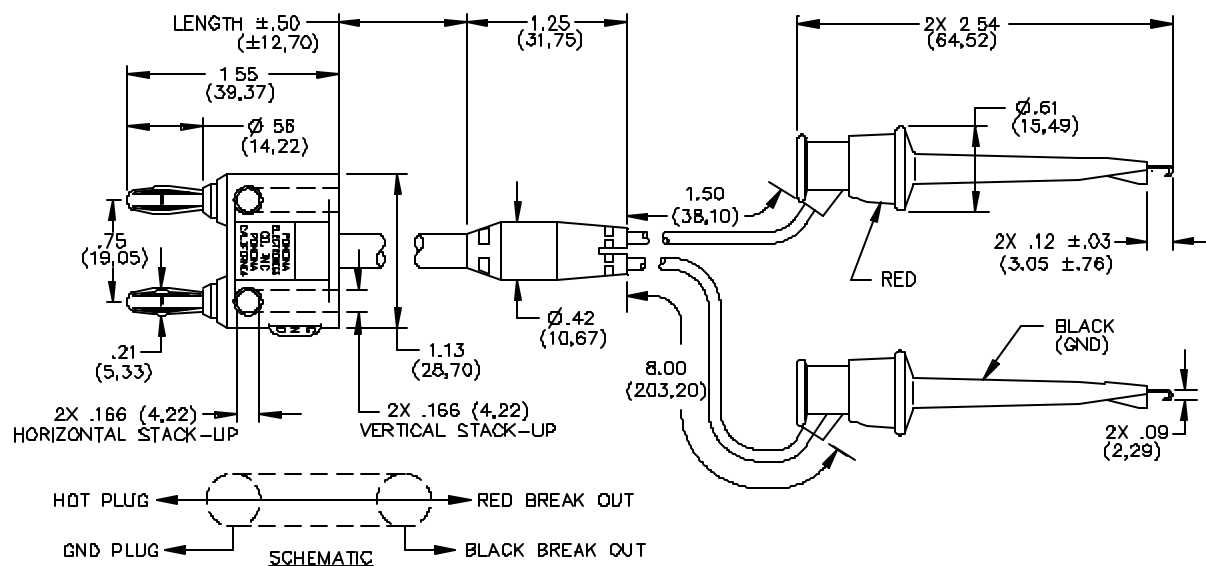


Model 3786 Minigrabber® Test Clips To Double Banana Plug



FEATURES:

- Converts double Banana Jacks to Minigrabber Test Clip.
- Lengths other than those specified are available upon request.

MATERIALS:

Conn: 1st End-Double Banana Plug

Material: Spring-Beryllium Copper per QQ-C-533, Alloy 172, Cond. HT.

Plug Body: Brass per QQ-B-626, Alloy 360, ½ Hard.

Finish: Nickel plated per QQ-N-290, Class 2, 200/300 microinches.

Insulation: Polypropylene molded to plug bodies and cable. Color matches color of cable.

Marking: "POMONA ELECTRONICS CO., INC. POMONA CALIFORNIA".

Cable: RG58C/U.

Marking: "POMONA 3786-C-XX".

Molded Breakout: PVC molded to breakout leads and cable. Color: Black Breakout Leads: 20 AWG, length.

41 x 36 T.C., PVC insulated, 2.21 (.087) O.D.

One Red Lead, one Black Lead

Conn: 2nd End-Minigrabber®

Material: Contact – Beryllium Copper per QQ-C-533, Alloy 165, ¼ HM.

Spring: stainless steel, Alloy 302.

Finish: Contact – Gold plated per MIL-G-45204, Type I, Class 00.

Insulation: Glass filled Nylon. Color: One Red and one Black.

Marking: "POMONA ELECTRONICS
"MINIGRABBER®".

RATINGS:

Operating Voltage: 300 VRMS/DC

Operating Temperature: +50°C. (+122°F.) Max

Current: 5 Amperes

ORDERING INFORMATION: Model 3786-C-XX

XX=Cable Length, Standard Length: 18" (457), 24"

(610), 36" (914), 48" (1219), 60" (1524)

Ordering Example: Model 3786-C-60 indicates 60" in

All dimensions are in inches. Tolerances (except noted): .xx = ±.02" (.51 mm), .xxx = ±.005" (.127 mm).

All specifications are to the latest revisions. Specifications are subject to change without notice.

Registered trademarks are the property of their respective companies. Made in USA

X-ON Electronics

Largest Supplier of Electrical and Electronic Components

Click to view similar products for [Test Leads](#) category:

Click to view products by [Pomona](#) manufacturer:

Other Similar products are found below :

[795-2384-10-25](#) [1301430020](#) [15107](#) [1510-24-105](#) [15308](#) [15408](#) [15302](#) [15307](#) [15407](#) [15409](#) [BU-1149-A-36-0](#) [BU-1481-E-12-0](#) [BU-1481-E-24-0](#) [1927617](#) [2450](#) [2524-A-60](#) [LB1F-2R-RED](#) [LB1F-2R-YLW](#) [2500](#) [2524-A-48](#) [2977-J-48](#) [R948131000](#) [380200](#) [BU-1449-E-12-2](#) [BU-1480-E-24-0](#) [BU-1481-E-12-2](#) [BU-1481-E-24-2](#) [LB1F-2R-BLK](#) [LB1F-2R-BLUE](#) [LB1F-2R-WHT](#) [6345](#) [6432](#) [EM3782-24-3#](#) [R948161002](#) [R948160002](#) [R948170002](#) [R948171002](#) [R948163002](#) [973604100](#) [934160101](#) [934160100](#) [R948174000](#) [CT3269](#) [CT3258](#) [CT3158-100](#) [HSPL 8568/AWG16/200/RT](#) [HSPL 8568/AWG16/200/SW](#) [28.0119-10020](#) [28.0127-05025](#) [28.0127-20025](#)