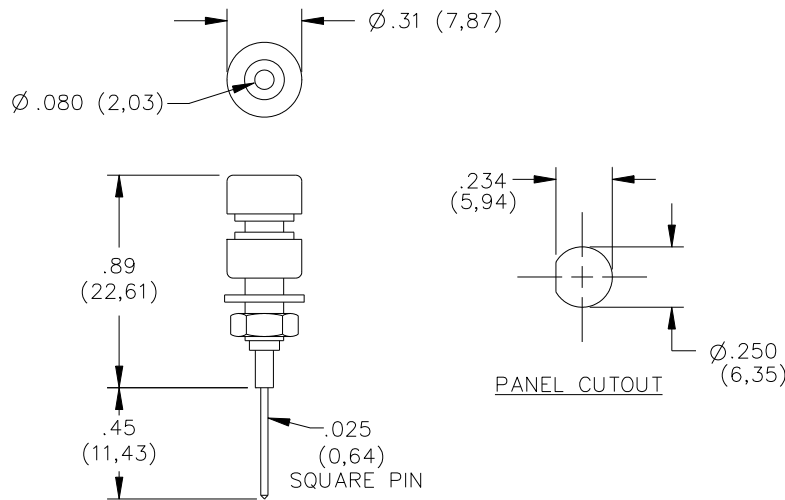


Model 4773 Insulated Pin Jack, Miniature With Wrapped Wire Terminal



FEATURES:

- Accepts .080 dia. pin
- Max. panel thickness .25.

MATERIALS:

Pin Jack Insulation: Polycarbonate molded to Pin Jack Body.

Panel Insulator: Polycarbonate. Color matches color of Pin Jack insulation.

Lockwasher #8 Internal Tooth: Steel. Finish: Nickel plated per QQN-290, latest revision, Class 2, 200/300 microinches

Hex Nut #8-32: Brass. Finish: Nickel plated per QQN-290, latest revision, Class 2, 200/300 microinches.

Pin Jack Body: Nickel Plated Brass latest revision, Alloy 360, 1/2 Hard.

Spring: Gold Plated Beryllium Copper, Berylco 25 per QQC-533, latest revision, Cond. HT.

Finish: Body – Electroless nickel plated per MIL-C-26074, latest revision, Class 2, 200/300 microinches.

Spring – Gold plated per MIL-G-45204, latest revision Type II, Class 00 over electroless nickel per MIL-C-26074, latest revision, Class 1, 200/300 microinches.

Wrapped Wire Terminal: Gold Plated Phosphor Bronze

Finish: Gold plated per MIL-G-45204, latest revision, Type II, Class 00 over electroless nickel per MIL-C-26074, latest revision, Class 1, 200/300 microinches.

RATINGS:

Operating Temperature: +115°C. (+239°F.) Max.

Operating Voltage: 1500 VDC

Current: 3 Amperes

ORDERING INFORMATION: Model 4773-*

* = Color, Standard Colors: -0 Black, -2 Red, -6 Blue, -9 White

All dimensions are in inches. Tolerances (except noted): .xx = ±.02" (.51 mm), .xxx = ±.005" (.127 mm).

All specifications are to the latest revisions. Specifications are subject to change without notice.

Registered trademarks are the property of their respective companies.

Made in USA

6/9/99

SY/EH/LS

W:\pomona\grponly\Datasheet Updates\Updates 2005\d4773_1_02.doc

More drawings available at www.pomonaelectronics.com

Page 1 of 1

X-ON Electronics

Largest Supplier of Electrical and Electronic Components

Click to view similar products for [Test Plugs & Test Jacks](#) category:

Click to view products by [Pomona](#) manufacturer:

Other Similar products are found below :

[579-0400](#) [66000-7](#) [R644543000](#) [R921923000](#) [R921930000](#) [R941344000](#) [R948161000](#) [R999351000](#) [1408-4](#) [1533-1](#) [174-R825B-EX](#)
[NYS508-BU](#) [NYS508-O](#) [1680](#) [174-R819B-EX](#) [R644543003](#) [R644543004](#) [R644543020](#) [R644543021](#) [R921926000](#) [R921931000](#)
[R921932000](#) [R921934000](#) [R929991000](#) [R941460000](#) [R941461000](#) [R941463600](#) [R941920600](#) [R948160000](#) [31B-2-RED](#) [032-0016-023](#) [105-](#)
[1106-001](#) [108-1000-106](#) [108-2301-621](#) [66001-9](#) [7013](#) [1395080-1](#) [930166100](#) [NYS508-GR](#) [NYS508-V](#) [NYS508-W](#) [NYS508-Y](#) [NYS511-R](#)
[BP30-2BR10-B PKG](#) [BP30-10-WT](#) [BP30-2BR-B PKG](#) [BP30Y-1 PKG](#) [R941049000](#) [R941340000](#) [R921922000](#)