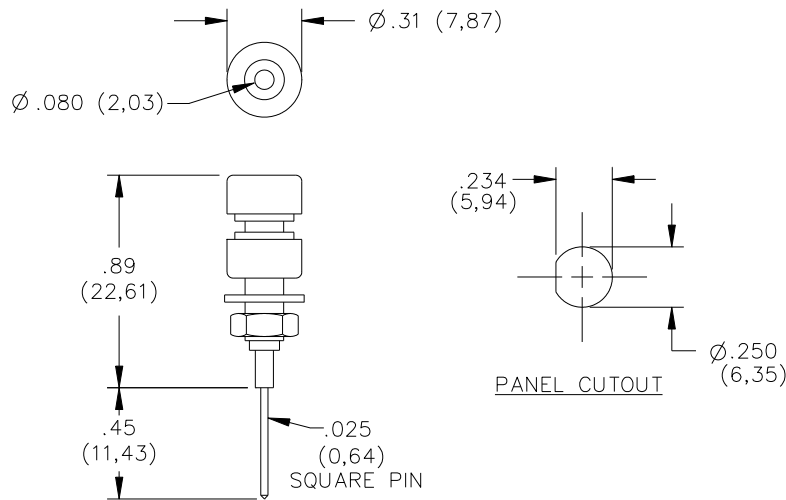


## Model 4773 Insulated Pin Jack, Miniature With Wrapped Wire Terminal



### FEATURES:

- Accepts .080 dia. pin
- Max. panel thickness .25.

### MATERIALS:

Pin Jack Insulation: Polycarbonate molded to Pin Jack Body.

Panel Insulator: Polycarbonate. Color matches color of Pin Jack insulation.

Lockwasher #8 Internal Tooth: Steel. Finish:

Nickel plated per QQN-290, latest revision, Class 2, 200/300 microinches

Hex Nut #8-32: Brass. Finish: Nickel plated per QQN-290, latest revision, Class 2, 200/300 microinches.

Pin Jack Body: Nickel Plated Brass latest revision, Alloy 360, ½ Hard.

Spring: Gold Plated Beryllium Copper, Berylco 25 per QQC-533, latest revision, Cond. HT.

Finish: Body – Electroless nickel plated per MIL-C-26074, latest revision, Class 2, 200/300 microinches.

Spring – Gold plated per MIL-G-45204, latest revision Type II, Class 00 over electroless nickel per MIL-C-26074, latest revision, Class 1, 200/300 microinches.

Wrapped Wire Terminal: Gold Plated Phosphor Bronze

Finish: Gold plated per MIL-G-45204, latest revision, Type II, Class 00 over electroless nickel per MIL-C-26074, latest revision, Class 1, 200/300 microinches.

### RATINGS:

Operating Temperature: +115°C. (+239°F.) Max.

Operating Voltage: 1500 VDC

Current: 3 Amperes

### ORDERING INFORMATION: Model 4773-\*

\* = Color, Standard Colors: -0 Black, -2 Red, -6 Blue, -9 White

All dimensions are in inches. Tolerances (except noted): .xx = ±.02" (.51 mm), .xxx = ±.005" (.127 mm).

All specifications are to the latest revisions. Specifications are subject to change without notice.

Registered trademarks are the property of their respective companies.

Made in USA

6/9/99

SY/EH/LS

W:\pomona\grponly\Datasheet Updates\Updates 2005\d4773\_1\_02.doc

More drawings available at [www.pomonaelectronics.com](http://www.pomonaelectronics.com)

Page 1 of 1

## X-ON Electronics

Largest Supplier of Electrical and Electronic Components

*Click to view similar products for [Test Plugs & Test Jacks](#) category:*

*Click to view products by [Pomona](#) manufacturer:*

Other Similar products are found below :

[01-2601-4-0210](#) [01-2601-4-0212](#) [01-2604-4-0212](#) [01-2604-5-0210](#) [01-2150-1-0312](#) [01-2350-1-02](#) [01-2352-1-02](#) [01-2368-1-02](#) [01-2604-4-0210](#) [01-2604-5-0212](#) [01-2606-4-0210](#) [01-2606-4-0212](#) [01-2606-5-0212](#) [M39024/10-01G](#) [M39024/10-17G](#) [M39024/11-09G](#) [M39024/11-42](#) [M39024/11-43](#) [M39024/12-08](#) [707-5311](#) [707-5402-01-19](#) [707-5410](#) [923739-40-I](#) [R644543000](#) [R948161000](#) [R999351000](#) [1408-4](#) [1499-101](#) [1533-1](#) [1659559](#) [1659567](#) [1663921](#) [1663939](#) [1696-102](#) [174-R825B-EX](#) [NYS508-BU](#) [NYS508-O](#) [211-101](#) [RS100GBL](#) [RS250GBL](#) [251-102](#) [25-2251-2-03](#) [25-2259-2-03](#) [923743-16-I](#) [923743-24-I](#) [923743-28-I](#) [2854-BLU](#) [2970-BLK](#) [30-443G](#) [1680](#)