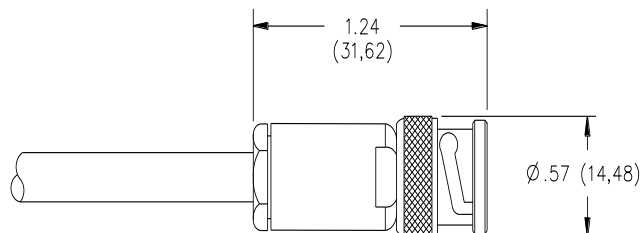


Model 5056 & Assembly Instructions
Triaxial Male 2 Lug Connector to Cable

Model 5056
Triaxial Male 2 Lug Connector to Cable

Features

- Fits Belden 9222 triaxial cable, 0.242" O.D.

Materials

Body and Fittings:	Brass, Tarnish Resistant Plating
Center Contacts:	Male: Brass, Gold Plated
Outer Contact:	Beryllium Copper, Gold Plated
Dielectric:	PTFE

Specifications

Voltage:	500 Vrms
Impedance:	50 Ohm
Temperature:	-65° C. (-85° F.) to +165° C. (+329° F.)
Frequency Range:	DC to 500 MHz

Ordering Information

Model: 5056
Triaxial Male 2 Lug Connector for Belden 9222 Cable

USA: Sales: 800-490-2361
Technical Support: technicalsupport@pomonatest.com
Fax: 425-446-5844

Europe: 31-(0) 40 2675 150 **International:** 425-446-5500
Where to Buy: www.pomonaelectronics.com

All dimensions are in inches. Tolerances (except noted): .xx = ±.02" (.51 mm), .xxx = ±.005" (.127 mm). All specifications are to the latest revisions. Specifications are subject to change without notice. Registered trademarks are the property of their respective companies.

Model 5056 & Assembly Instructions Triaxial Male 2 Lug Connector to Cable

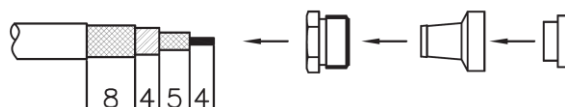
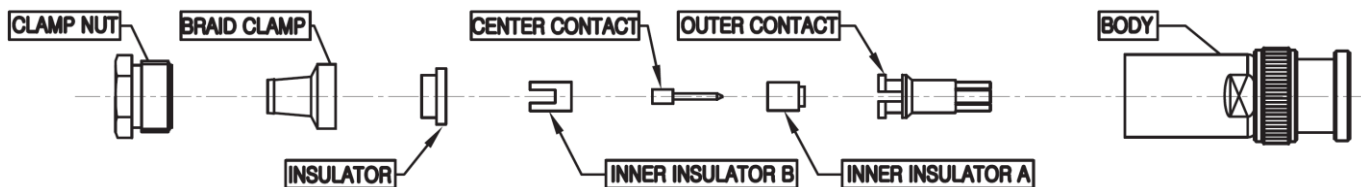


FIGURE #1

- 1.1 Strip cable per drawing lengths (mm).
- 1.2 Slide nut onto stripped cable.
- 1.3 Insert braid clamp and insulation on stripped cable.



FIGURE #2

- 2.1 Solder pin with center conductor then insert inner insulator A and B on the pin.
- 2.2 Peel back shield and insert outer contact.

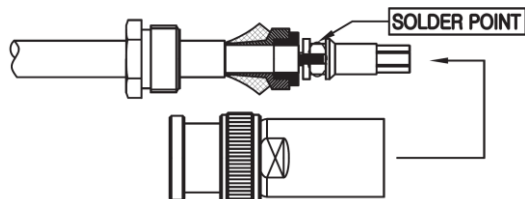


FIGURE #3

- 3.1 Position shield on solder point and solder outer contact to shield.
- 3.2 Insert body on assembled cable and fasten with wrench.

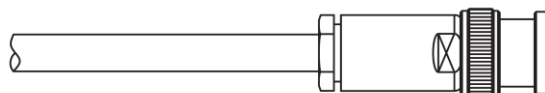


FIGURE #4

- 4.1 Completed assembly shown.

USA: Sales: 800-490-2361
 Technical Support: technicalsupport@pomonatest.com
 Fax: 425-446-5844
Europe: 31-(0) 40 2675 150 **International:** 425-446-5500
Where to Buy: www.pomonaelectronics.com

All dimensions are in inches. Tolerances (except noted): .xx = ± 0.02 " (.51 mm),
 .xxx = ± 0.005 " (.127 mm). All specifications are to the latest revisions.
 Specifications are subject to change without notice. Registered trademarks are
 the property of their respective companies.

X-ON Electronics

Largest Supplier of Electrical and Electronic Components

Click to view similar products for [RF Connectors / Coaxial Connectors](#) category:

Click to view products by [Pomona](#) manufacturer:

Other Similar products are found below :

[8915-1511-000](#) [89674-0827](#) [6001-7071-019](#) [6002-7051-003](#) [6002-7551-202](#) [6059674-1](#) [619550-1](#) [630059-000](#) [M39030/3-01N](#) [M3933/25-36N](#) [6500-7071-046](#) [6769](#) [CX050L2AQ](#) [7002-1542-011](#) [7004-1512-000](#) [7009-1511-004](#) [7010-1511-000](#) [7029-1511-060](#) [7101-1541-010](#) [7101-1571-002](#) [7105-1521-002](#) [7145-1521-002](#) [7203-1571-003](#) [7209-1511-011](#) [7210-1511-015](#) [7210-1511-019](#) [73137-5015](#) [73216-2241](#) [7325-1512-000](#) [73404-2300](#) [7405-1521-005](#) [7405-1521-802](#) [7406-1521-005](#) [8527](#) [8547](#) [FS11V](#) [8808-1511-001](#) [9049-9513-000](#) [9074-9513-000](#) [9101-9573-002](#) [910A205F](#) [9130-9573-002](#) [PL11SC-026](#) [PL375-33](#) [PL40-5](#) [PL71-9](#) [PL74C-221](#) [PL75MC-217](#) [PL803-7](#) [980-8666-005](#)