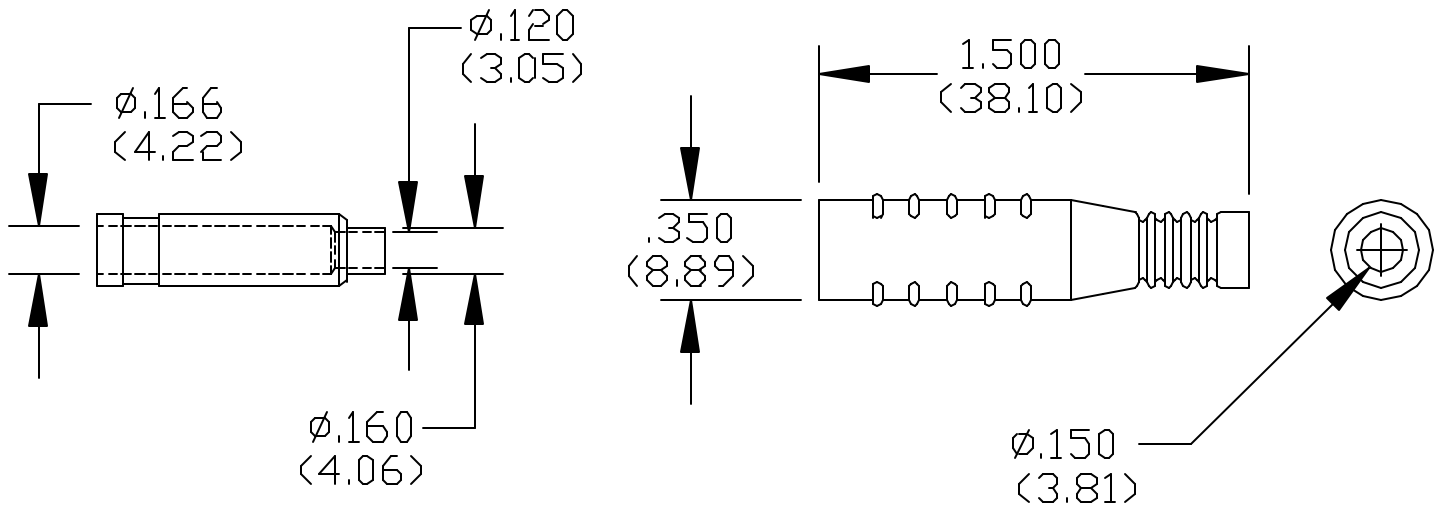


Model 5168 Do-It-Yourself In-Line Banana Jack With Flexible Boot



FEATURES:

- Ideal for making test cables and field repairs.
- Use with Model #5170 Banana Plug to make extension cables.
- Snap-on two piece design allows the wire to be crimped or soldered.
- Part will accept 14, 16 AWG wire, crimp or solder connection.

MATERIALS:

In-Line Banana Jack

Brass per QQ-B-626, Alloy 360, ½ Hard.

Insulation: Flexible PVC

Marking: "POMONA"

Finish: Nickel plated per QQ-N-290, Class 2, 200/300 micro-inches.

RATINGS: (Independent of Wire)

Operating Temperature: +50°C. (+122°F.) Max.

Voltage: Hand-held testing: 30VAC/60VDC Max.

Hands free testing in controlled voltage environments: 5000 WVDC Max.

Current: 15 Amperes.

ORDERING INFORMATION: Model 5168-*

*=Color, -0 Black, -2 Red

Ordering Example: 5168-2, Color is Red

Colors other than those specified are available on request.

All dimensions are in inches. Tolerances (except noted): .xx = ±.02" (.51 mm), .xxx = ±.005" (.127 mm).

All specifications are to the latest revisions. Specifications are subject to change without notice.

Registered trademarks are the property of their respective companies. Made in USA

X-ON Electronics

Largest Supplier of Electrical and Electronic Components

Click to view similar products for [Test Plugs & Test Jacks](#) category:

Click to view products by [Pomona](#) manufacturer:

Other Similar products are found below :

[579-0400](#) [66000-7](#) [R644543000](#) [R921923000](#) [R921930000](#) [R941344000](#) [R948161000](#) [R999351000](#) [1408-4](#) [1533-1](#) [174-R825B-EX](#)
[NYS508-BU](#) [NYS508-O](#) [1680](#) [174-R819B-EX](#) [R644543003](#) [R644543004](#) [R644543020](#) [R644543021](#) [R921926000](#) [R921931000](#)
[R921932000](#) [R921934000](#) [R929991000](#) [R941460000](#) [R941461000](#) [R941463600](#) [R941920600](#) [R948160000](#) [31B-2-RED](#) [032-0016-023](#) [105-](#)
[1106-001](#) [108-1000-106](#) [108-2301-621](#) [66001-9](#) [7013](#) [1395080-1](#) [930166100](#) [NYS508-GR](#) [NYS508-V](#) [NYS508-W](#) [NYS508-Y](#) [NYS511-R](#)
[BP30-2BR10-B PKG](#) [BP30-10-WT](#) [BP30-2BR-B PKG](#) [BP30Y-1 PKG](#) [R941049000](#) [R941340000](#) [R921922000](#)