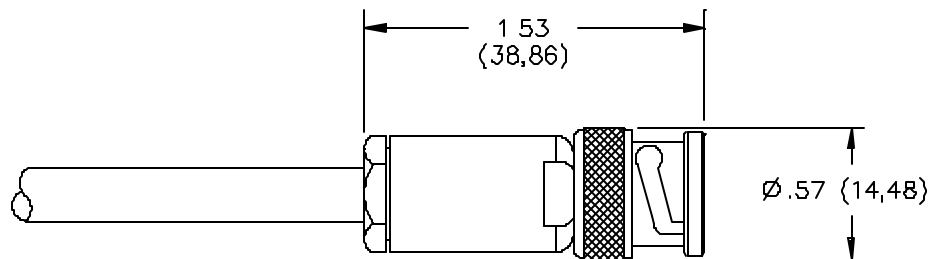


Model 5218 & Assembly Instructions Triaxial Male 3 Lung Connector To Cable



FEATURES:

- Fits Belden triaxial 9222 .242" O.D.

MATERIALS:

Body and Fittings: Brass, Tarnish Resistant Plating
Center Contact: Male: Brass, Tarnish Resistant Plating
Female: Gold Plated Beryllium Copper
Outer Contact: Gold Plated Beryllium Copper
Dielectric: PTFE

RATINGS:

Voltage: 500 VRMS
Impedance: 50 Ohms
Temperature: -65° C. (-85° F.) to +165° C. (+329° F.)
Frequency Range: DC to 500MHz

ORDERING INFORMATION: Model 5218

All dimensions are in inches and metric. All specifications are to the latest revisions. Specifications are subject to change without notice.
Registered trademarks are the property of their respective companies. Made in USA

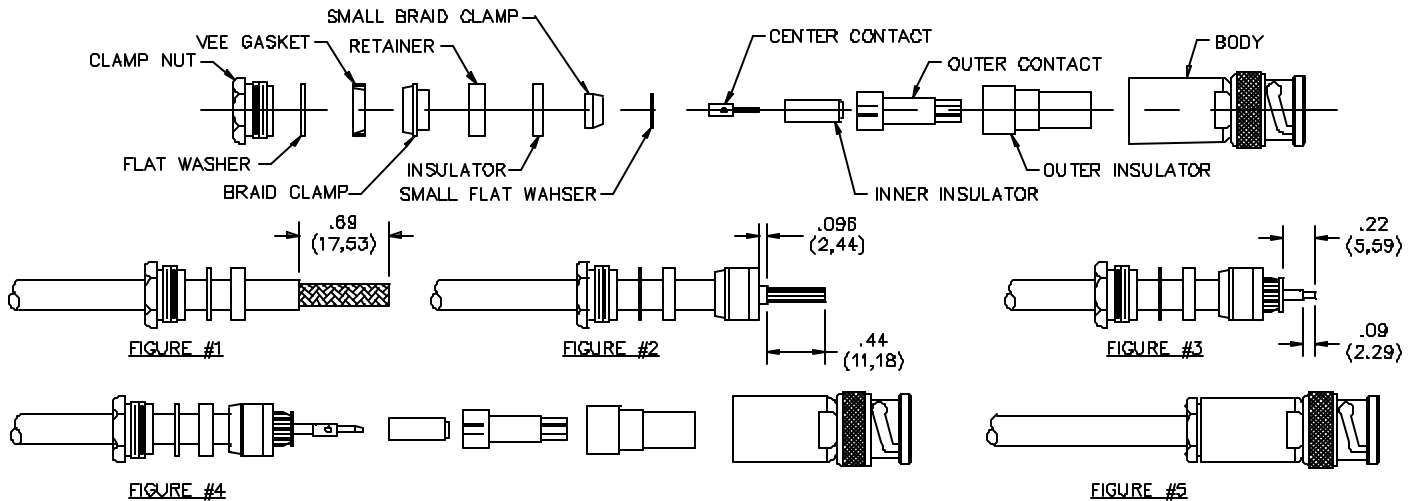


FIGURE #1

Slide clamp nut, flat washer and Vee gasket over cable.
Strip outer jacket or cable.

FIGURE #2

Comb braid forward.
Slide braid clamp over braid and against outer cable jacket. Fold braid back over braid clamp, trim even with base of braid clamp.
Assemble retainer and insulator over inner jacket.
Trim inner jacket.

FIGURE #3

Place small braid clamp over inner braid and against inner jacket, comb out inner braid and fold inner braid back over small braid clamp, trim inner braid even with base of small braid clamp.
Assemble washer over dielectric against inner braid.
Trim inner dielectric and center conductor.

FIGURE #4

Solder center contact to center conductor.
Place inner insulator, outer contact and outer insulator over center contact and insert into body.
Slide clamp nut, washer and Vee gasket forward, thread assembly into body and tighten.

FIGURE #5

Completed assembly shown.

All dimensions are in inches and metric. All specifications are to the latest revisions. Specifications are subject to change without notice.
Registered trademarks are the property of their respective companies. Made in USA

Sales: 800-490-2361 Fax: 888-403-3360
Technical Assistance: 800-241-2060

PomonaACCESS 90111 (800) 444-6785 or (425) 446-6010
More drawings available at www.pomonaelectronics.com

X-ON Electronics

Largest Supplier of Electrical and Electronic Components

Click to view similar products for [RF Connectors / Coaxial Connectors](#) category:

Click to view products by [Pomona](#) manufacturer:

Other Similar products are found below :

[8915-1511-000](#) [89674-0827](#) [6001-7071-019](#) [6002-7051-003](#) [6002-7551-202](#) [6059674-1](#) [619550-1](#) [630059-000](#) [M39030/3-01N](#) [M3933/25-36N](#) [6500-7071-046](#) [6769](#) [CX050L2AQ](#) [7002-1542-011](#) [7004-1512-000](#) [7009-1511-004](#) [7010-1511-000](#) [7029-1511-060](#) [7101-1541-010](#) [7101-1571-002](#) [7105-1521-002](#) [7145-1521-002](#) [7203-1571-003](#) [7209-1511-011](#) [7210-1511-015](#) [7210-1511-019](#) [73137-5015](#) [73216-2241](#) [7325-1512-000](#) [73404-2300](#) [7405-1521-005](#) [7405-1521-802](#) [7406-1521-005](#) [8527](#) [8547](#) [FS11V](#) [8808-1511-001](#) [9049-9513-000](#) [9074-9513-000](#) [9101-9573-002](#) [910A205F](#) [9130-9573-002](#) [PL11SC-026](#) [PL375-33](#) [PL40-5](#) [PL71-9](#) [PL74C-221](#) [PL75MC-217](#) [PL803-7](#) [980-8666-005](#)