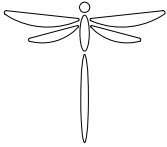
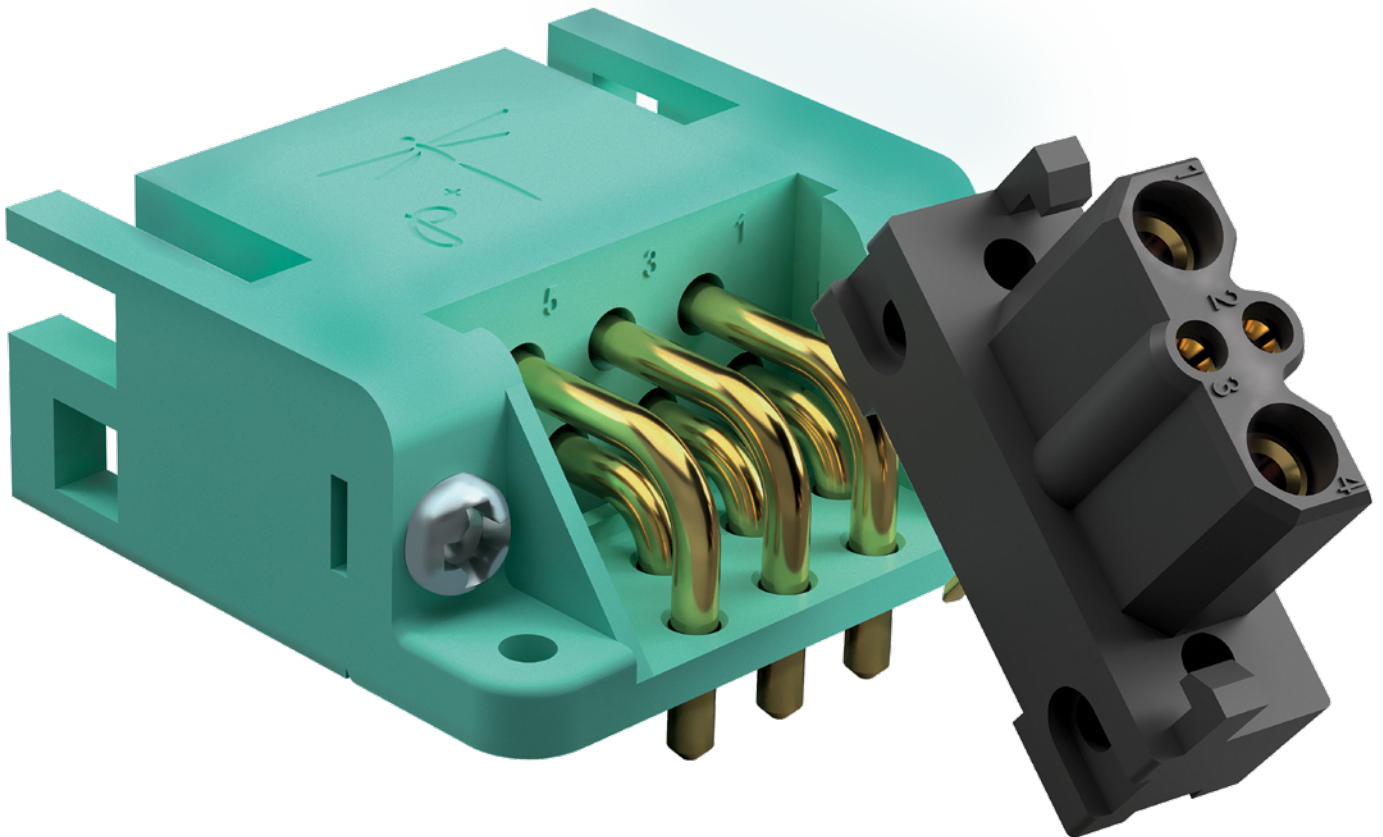


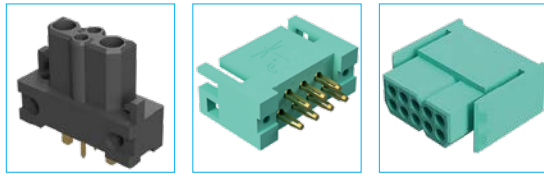
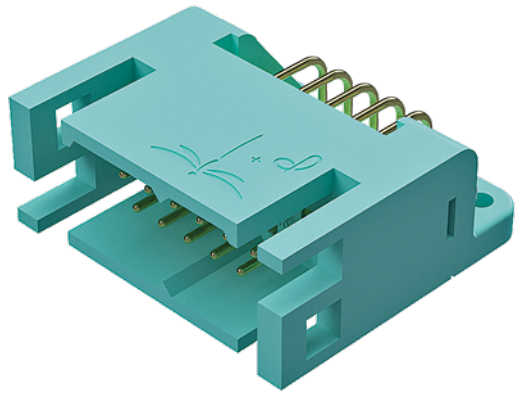
DRAGONFLY

HIGH DENSITY POWER & SIGNAL



- Cost effective high density power & signal solution
- Current rating up to 20A per contact
- Integral locking latch mechanism





Dragonfly connectors are designed for staging a with versatile combination of power and signal solutions in a compact design. Dragonfly series also offers PCB mount, panel mount and cable connections in a small form factor design utilizing high-reliability, high-retention and high cycle life precision machined contacts.

Trust the **Dragonfly** to deliver **The Science of Certainty** in cost-sensitive, power and signal applications.

TECH SPECS

GENERAL

Part Number Prefix	DF
Performance Level	Industrial
Qualifications	UL

MATERIAL

Insulator Material	Nylon
Insulator Color	Green Black
Flammability Rating	UL 94V-0
Contact Material	Copper alloy
Contact Plating	Gold flash

ELECTRICAL

Working Voltage (rms)	Signal	333 V
	Power	500 V
Initial Contact Resistance	Signal	5 mΩ
	Power* ¹	3 mΩ
Contact Current Rating	Signal* ¹	up to 7.5 A
	Power	up to 20 A

*¹ Values established using standard conductivity alloy

MECHANICAL

Contact Style	Fixed	
	Removable	
Contact Termination	Crimp Contact	
	Straight solder	
	Straight press-fit	
	Right angle solder	
Female Contact Design	Signal	Open entry
	Power	Closed entry
Mating Cycles	Open entry	500
	#20 Closed entry	1000
	#16 Closed entry* ¹	10,000

*¹ See chart on page 3

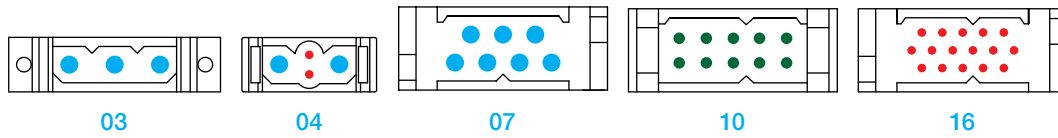
ENVIRONMENTAL

Operating Temperature	-55 to 125°C
-----------------------	--------------

To download detailed product information, visit www.connectpositronic.com/Dragonfly/ProductSpecs

CONTACT LAYOUTS

Scale 1:1

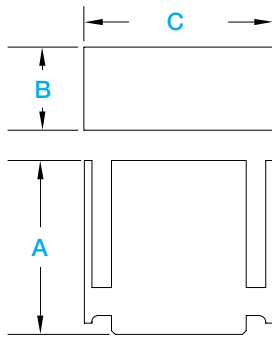


Contact Size Chart		
#16	#20	#22

All Positronic products utilize solid, machined contacts.

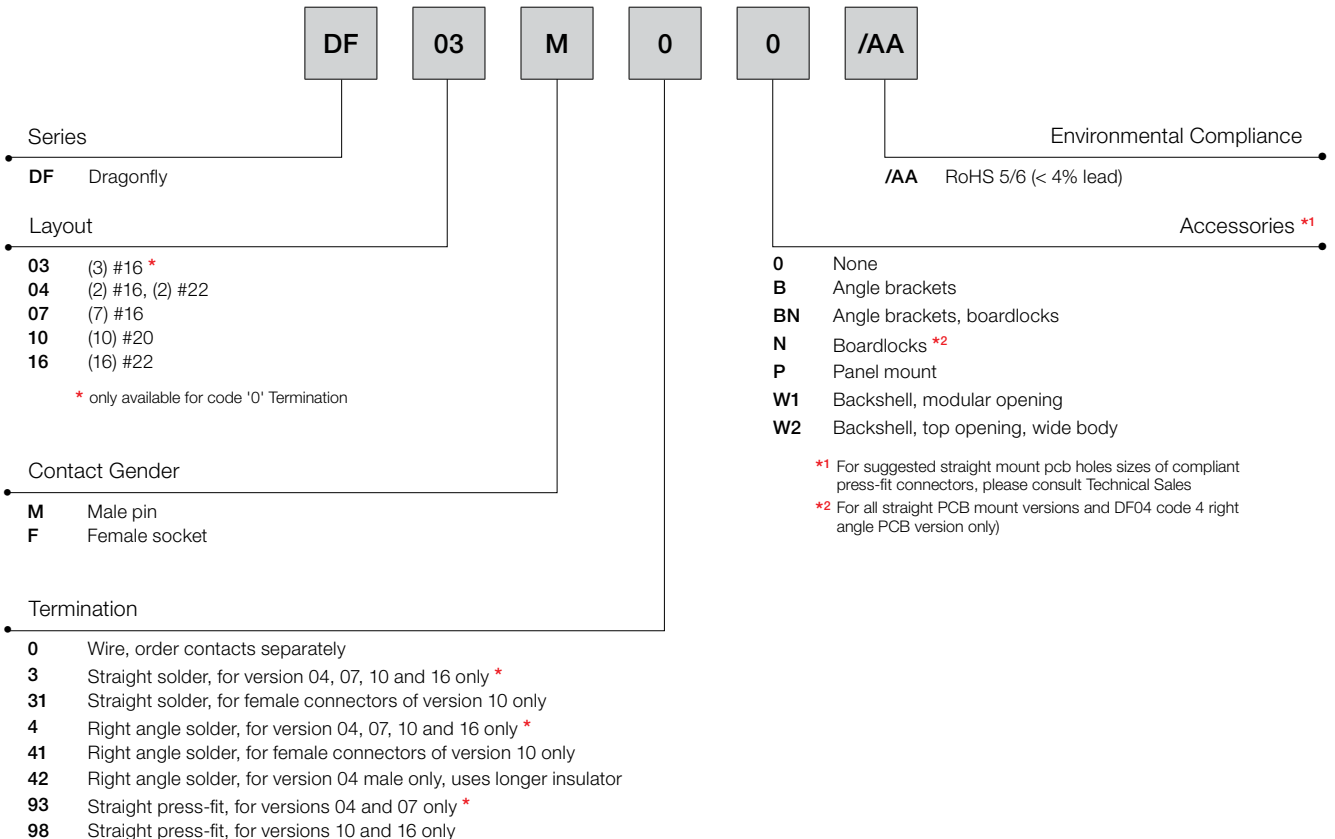
DIMENSIONS

For the sake of brevity, only basic dimensions of the free cable male is shown here. Full dimensional detail is available in the respective product drawings.



LAYOUT	Termination	A	B	C
03	Cable Connector	26.20 [1.031]	7.20 [.283]	28.00 [1.102]
04	Cable Connector	26.20 [1.032]	7.20 [.283]	17.80 [.701]
07, 10 and 16	Cable Connector	23.00 [.906]	11.00 [.433]	25.00 [.984]

CREATE A PART



* For code 3, 4 & 93: Size 16 & 20 are closed entry contacts; Size 22 is open entry contacts

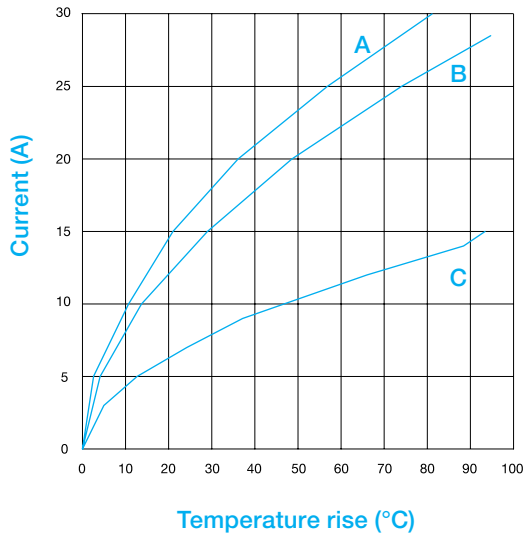
CONTACTS

Contact Technical Sales for crimp contact part numbers not listed here.

PART NUMBER	Size	Gender	Female Contact Style	Stranded AWG [mm ²]
FC112N2/AA	#16	Female	Closed entry	#12 [4.0]
MC112N/AA	#16	Male	n/a	#12 [4.0]
FC114N2/AA	#16	Female	Closed entry	#14-16 [2.5-1.5]
MC114N/AA	#16	Male	n/a	#14-16 [2.5-1.5]
FC116N2/AA	#16	Female	Closed entry	#16-18 [1.5-1.0]
MC116N/AA	#16	Male	n/a	#16-18 [1.5-1.0]
FC120N2/AA	#16	Female	Closed entry	#20-24 [.5-.25]
MC120N/AA	#16	Male	n/a	#20-24 [.5-.25]
FC718N7/AA	#20	Female	Open entry	#18 [1.0]
FC718N2/AA	#20	Female	Closed entry	#18 [1.0]
MC718N/AA	#20	Male	n/a	#18 [1.0]
FC720N7/AA	#20	Female	Open entry	#20-24 [.5-.25]
FC720N2/AA	#20	Female	Closed entry	#20-24 [.5-.25]
MC720N/AA	#20	Male	n/a	#20-24 [.5-.25]
FC422N8/AA	#22	Female	Closed entry	#22-26 [.3-.14]
MC422N/AA	#22	Male	n/a	#22-28 [.3-.08]

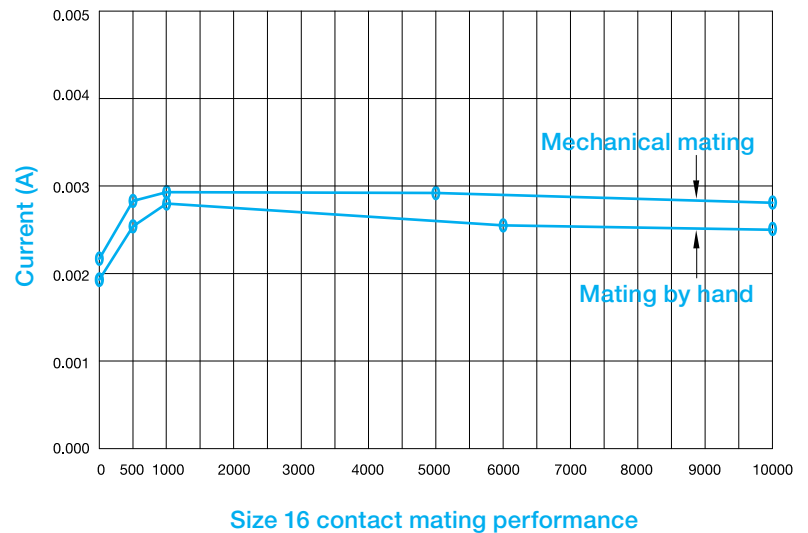
TEMPERATURE RISE CURVES & CONTACT MATING PERFORMANCE

Tested per IEC Publication 60512-3, Test 5a



- A Developed with DF04 connectors and AWG 12 wires.
 - B Developed with DF07 connectors and AWG 12 wires.
 - C Developed with DF10 connectors and AWG 18 wires.
- All power contacts under load.

Tested per IEC Publication 60512-2, Test 2b

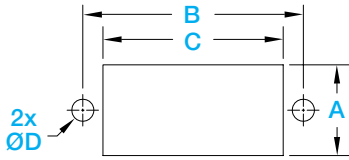


Above curves developed using DF07 connectors fully populated with size 16 contacts with 10,000 mating cycles. This information is supplied for reference. Contact wear and change in contact resistance may vary from one application to another. Contact Technical Sales to discuss details.

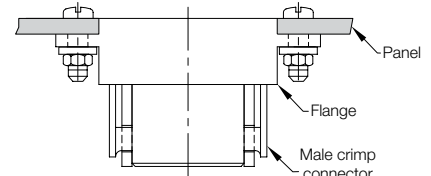
PANEL MOUNT OPTION

For male crimp connectors only

Panel Cutout

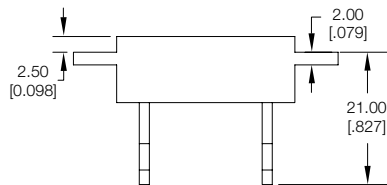
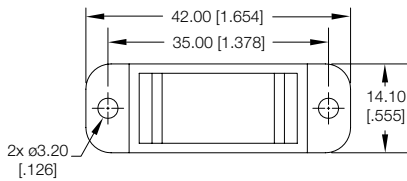


LAYOUT	A	B	C	ØD
03	7.76 [.306]	24.00 [.945]	18.52 [.729]	2.44 [.096]
07, 10, 16	14.40 [.567]	35.00 [1.378]	28.60 [1.126]	3.50 [.138]



Suggested installation of connector to panel with screws and nuts. (Screws and nuts shown for reference only)

Flange Dimensions (for 07, 10 and 16 layouts)

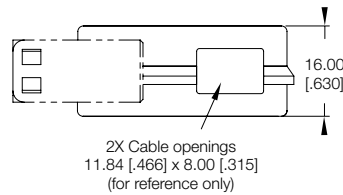
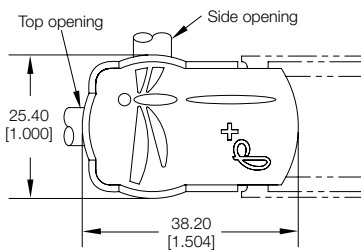


MATERIAL	
Flange	Nylon, UL 94V-0 Flange supplied installed

BACKSHELL

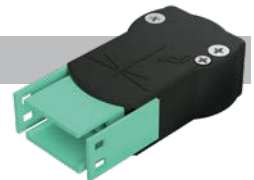
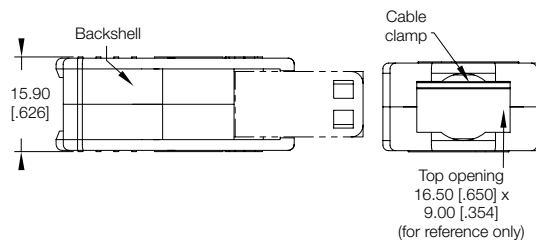
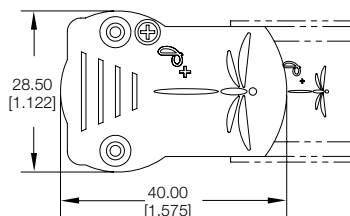
For version 07, 10 and 16

W1 - Top and side opening








MATERIALS	
Backshell	Polypropylene, UL 94V-0, black
Cable clamp	Steel with nickel plate
Screws	Steel with nickel plate or black oxide

W2 - Top opening (For larger wire bundle)



MATERIALS	
Backshell	Nylon, UL 94V-0, black
Cable clamp	Steel with nickel plate
Screws	Steel with nickel plate or black oxide

See connectpositronic.com/Dragonfly
for all other Dragonfly-related
information including:

- ✓ **Footprints** 
- ✓ **Tooling** 
- ✓ **Product updates** 
- ✓ **Detailed dimensions** 
- ✓ **2D/3D drawings** 

All dimensional tolerances are ± 0.38 [0.015], unless otherwise specified: ± 0.03 mm [0.001 inches] for male contact mating diameters; ± 0.08 mm [0.003 inches] for contact termination diameters; ± 0.13 mm [0.005 inches] for all other diameters; ± 0.38 mm [0.015 inches] for all other dimensions. Dimensions are in millimeter [inches]. All dimensions are subject to change. Product pictures may not be identical in appearance to actual production parts.

Information in this catalog is proprietary to Positronic and its subsidiaries. Positronic believes the data contained herein to be reliable. Since the technical information is given free of charge, the user employs such information at his own discretion and risk. Positronic assumes no responsibility for results obtained or damages incurred from use of such information in whole or in part.

The following trademarks are owned by Positronic Industries, Inc.: Positronic Industries, Inc.®, Positronic®, Connector Excellence®, P+ logo®, PosiBand®, PosiShop®, Optik-D™, and The Science of Certainty®. The color blue as it appears on various connectors is a trademark of Positronic Industries, Inc., Registered in U.S. Patent and Trademark Office.

Products described within this catalog may be protected by one or more of the following US patents:

#4,900,261 #5,255,580 #5,329,697 #6,260,268
#6,835,079 #7,115,002 #8,944,697 #9,304,263

Patented in Canada, 1992 Other patents pending

Positronic | Americas

423 N Campbell Ave
Springfield MO 65806 USA
+1 800 641 4054
info@connectpositronic.com

Positronic | Europe

46 route d'Engachies
F-32020 Auch Cedex 9 France
+33 5 6263 4491
contact@connectpositronic.com

Positronic | Asia

3014A Ubi Rd 1 #07-01
Singapore 408703
+65 6842 1419
singapore@connectpositronic.com

Sales Offices

Positronic has local sales representation all over the world. For the nearest sales office visit www.connectpositronic.com/sales

X-ON Electronics

Largest Supplier of Electrical and Electronic Components

Click to view similar products for [Power to the Board](#) category:

Click to view products by [Positronic](#) manufacturer:

Other Similar products are found below :

[6450552-7](#) [6643429-1](#) [6646040-2](#) [6766604-1](#) [120959-1](#) [1393557-2](#) [1393532-2](#) [1393532-3](#) [1393532-4](#) [1393557-1](#) [1744132-7](#) [1766250-1](#)
[1892109-1](#) [1-6450850-6](#) [1-6450869-6](#) [1645526-2](#) [2005243-2](#) [377-0020-11130](#) [MC116N](#) [TE34-12-16P-F0](#) [51700-10201602AALF](#) [51970-004](#) [5-6450830-6](#) [4-6600333-3](#) [10125416-4050LF](#) [10130248-005LF](#) [6600320-3](#) [IPBT-103-H1-T-S-RA](#) [1888123-2](#) [6766605-1](#) [701-15-02109](#)
[6450810-7](#) [46437-1112](#) [6450813-2](#) [6450842-4](#) [10108877-R24403SLF](#) [1645523-1](#) [PSS-06-01-T-S](#) [FWS-03-04-T-S](#) [51760-10301603ABLF](#)
[MDF6-TA2022HC](#) [FWS-05-01-T-S](#) [51720-10206002AALF](#) [QE-POL-KEY](#) [FWS-08-01-T-S](#) [698-0075-04](#) [6651670-1](#) [MC120N](#) [2-1600788-6](#)
[1761385-3](#)