

## Single Phase Rectifier Bridge

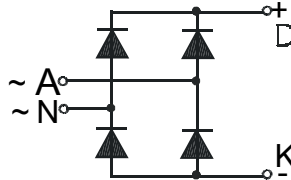
## PSB 68

$$I_{dAV} = 68 \text{ A}$$

$$V_{RRM} = 600-1600 \text{ V}$$

Preliminary Data Sheet

$V_{RSM}$ $V_{DSM}$ (V)	$V_{RRM}$ $V_{DRM}$ (V)	Type
700	600	PSB 68/06
900	800	PSB 68/08
1300	1200	PSB 68/12
1500	1400	PSB 68/14
1700	1600	PSB 68/16



### Features

- Package with DCB ceramic base plate
- Isolation voltage 3000 V~
- Planar glass passivated chips
- Low forward voltage drop
- Leads suitable for PC board soldering
- UL registered, E 148688

### Applications

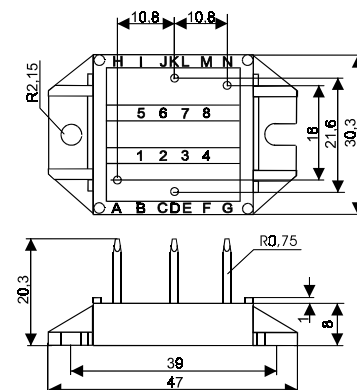
- Supplies for DC power equipment
- Input rectifier for PWM inverter
- Battery DC power supplies
- Field supply for DC motors

### Advantages

- Easy to mount with two screws
- Space and weight savings
- Improved temperature and power cycling capability
- High power density
- Small and light weight

### Package style and outline

Dimensions in mm (1mm = 0.0394")



Symbol	Test Conditions	Maximum Ratings
$I_{dAV}^*$	$T_C = 90^\circ\text{C}$ , (per module)	68 A
$I_{FSM}$	$T_{VJ} = 45^\circ\text{C}$ t = 10 ms (50 Hz), sine	530 A
	$V_R = 0$ t = 8.3 ms (60 Hz), sine	570 A
	$T_{VJ} = T_{VJM}$ t = 10 ms (50 Hz), sine	480 A
	$V_R = 0$ t = 8.3 ms (60 Hz), sine	520 A
$\int i^2 dt$	$T_{VJ} = 45^\circ\text{C}$ t = 10 ms (50 Hz), sine	1400 A <sup>2</sup> s
	$V_R = 0$ t = 8.3 ms (60 Hz), sine	1360 A <sup>2</sup> s
	$T_{VJ} = T_{VJM}$ t = 10 ms (50 Hz), sine	1150 A <sup>2</sup> s
	$V_R = 0$ t = 8.3 ms (60 Hz), sine	1140 A <sup>2</sup> s
$T_{VJ}$		-40... + 150 °C
$T_{VJM}$		150 °C
$T_{stg}$		-40... + 125 °C
$V_{ISOL}$	50/60 Hz, RMS t = 1 min	2500 V~
	$I_{ISOL} \leq 1 \text{ mA}$ t = 1 s	3000 V~
$M_d$	Mounting torque (M4)	1.5 - 1.8 Nm
		14 - 16 lb.in.
<b>Weight</b>	typ.	16 g

Symbol	Test Conditions	Characteristic Value
$I_R$	$V_R = V_{RRM}$ , $T_{VJ} = T_{VJM}$	$\leq 3.0$ mA
	$V_R = V_{RRM}$ , $T_{VJ} = 25^\circ\text{C}$	$\leq 0.5$ mA
$V_F$	$I_F = 80 \text{ A}$ , $T_{VJ} = 25^\circ\text{C}$	$\leq 1.5$ V
$V_{TO}$	For power-loss calculations only	0.8 V
$r_T$		7.5 mΩ
$R_{thJC}$	per diode; DC	1.2 K/W
	per module	0.30 K/W
$R_{thJK}$	per diode; DC	1.5 K/W
	per module	0.38 K/W
$d_s$	Creeping distance on surface	11.2 mm
$d_A$	Creeping distance in air	9.7 mm
$a$	Max. allowable acceleration	50 m/s <sup>2</sup>

Data according to IEC 60747 refer to a single diode unless otherwise stated  
\*- for resistive load at bridge output

## X-ON Electronics

Largest Supplier of Electrical and Electronic Components

*Click to view similar products for [Bridge Rectifiers](#) category:*

*Click to view products by [Powersem](#) manufacturer:*

Other Similar products are found below :

[MB2510](#) [MB252](#) [MB356G](#) [MB358G](#) [90MT160KPBF](#) [GBJ1504-BP](#) [GBU10B-BP](#) [GBU15J-BP](#) [GBU15K-BP](#) [GBU4A-BP](#) [GBU4D-BP](#)  
[GBU6B-E3/45](#) [GSIB680-E3/45](#) [DB101-BP](#) [DF01](#) [DF10SA-E345](#) [BU1508-E3/45](#) [KBPC50-10S](#) [RS405GL-BP](#) [G5SBA60-E3/51](#) [GBJ1502-](#)  
[BP](#) [GBU10J-BP](#) [GBU4J-BP](#) [GBU6M](#) [GBU8D-BP](#) [GBU8J-BP](#) [GSIB1520-E3/45](#) [2KBB10](#) [36MB140A](#) [TB102M](#) [MB1510](#) [MB258](#) [MB6M-](#)  
[G](#) [MB86](#) [TL401G](#) [MDA920A2](#) [TU602](#) [TU810](#) [MP502-BP](#) [BR1005-BP](#) [BR101-BP](#) [BR84DTP204](#) [BU2006-E3/45](#) [BU2008-E3/51](#) [36MT60](#)  
[KBPC25-02](#) [VS-2KBB60](#) [DB105-BP](#) [DF06SA-E345](#) [DF1502S-E3/77](#)