

Three Phase Rectifier Bridge

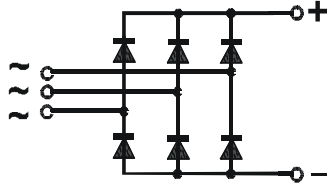
PSD 83

$$I_{dAV} = 100 \text{ A}$$

$$V_{RRM} = 800-1800 \text{ V}$$

Preliminary Data Sheet

V_{RSM} V_{DSM} (V)	V_{RRM} V_{DRM} (V)	Type
800	800	PSD 83/08
1200	1200	PSD 83/12
1400	1400	PSD 83/14
1600	1600	PSD 83/16
1800	1800	PSD 83/18



Symbol	Test Conditions	Maximum Ratings
I_{dAVM}	$T_C = 100 \text{ }^\circ\text{C}$, (per module)	100 A
I_{FSM}	$T_{VJ} = 45 \text{ }^\circ\text{C}$ t = 10 ms (50 Hz), sine	1200 A
	$V_R = 0$ t = 8.3 ms (60 Hz), sine	1300 A
	$T_{VJ} = T_{VJM}$ t = 10 ms (50 Hz), sine	1000 A
	$V_R = 0$ t = 8.3 ms (60 Hz), sine	1100 A
$\int i^2 dt$	$T_{VJ} = 45 \text{ }^\circ\text{C}$ t = 10 ms (50 Hz), sine	7200 A ² s
	$V_R = 0$ t = 8.3 ms (60 Hz), sine	7020 A ² s
	$T_{VJ} = T_{VJM}$ t = 10 ms (50 Hz), sine	5000 A ² s
	$V_R = 0$ t = 8.3 ms (60 Hz), sine	5020 A ² s
T_{VJ}		-40... + 150 $^\circ\text{C}$
T_{VJM}		150 $^\circ\text{C}$
T_{stg}		-40... + 150 $^\circ\text{C}$
V_{ISOL}	50/60 Hz, RMS t = 1 min	2500 V~
	$I_{ISOL} \leq 1 \text{ mA}$ t = 1 s	3000 V~
M_d	Mounting torque (M5)	5 Nm
	Terminal connection torque (M5)	5 Nm
Weight	typ.	160 g

Features

-
- Package with screw terminals
- Isolation voltage 3000 V~
- Planar glass passivated chips
- Blocking voltage up to 1800 V
- Low forward voltage drop
- UL registered E 148688

Applications

- Supplies for DC power equipment
- Input rectifier for PWM inverter
- Battery DC power supplies
- Field supply for DC motors

Advantages

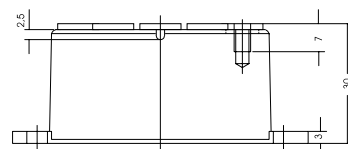
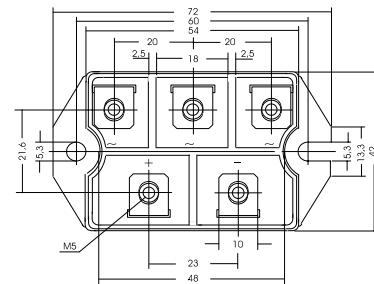
- Easy to mount with two screws
- Space and weight savings
- Improved temperature and power cycling capability

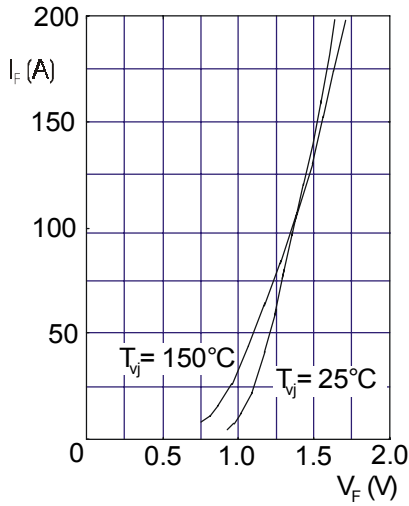
Symbol	Test Conditions	Characteristic Value
I_R	$V_R = V_{RRM}$, $T_{VJ} = 25 \text{ }^\circ\text{C}$	$\leq 0.3 \text{ mA}$
	$V_R = V_{RRM}$, $T_{VJ} = T_{VJM}$	$\leq 5 \text{ mA}$
V_F	$I_F = 100 \text{ A}$, $T_{VJ} = 25 \text{ }^\circ\text{C}$	$\leq 1.35 \text{ V}$
V_{TO}	For power-loss calculations only	0.8 V
r_T		5 m Ω
R_{thJC}	per diode; DC current	0.58 K/W
	per module	0.097 K/W
R_{thJK}	per diode; DC current	0.825 K/W
	per module	0.138 K/W
d_s	Creeping distance on surface	10.0 mm
d_A	Creeping distance in air	9.4 mm
a	Max. allowable acceleration	50 m/s ²

Data according to IEC 60747 refer to a single diode unless otherwise stated

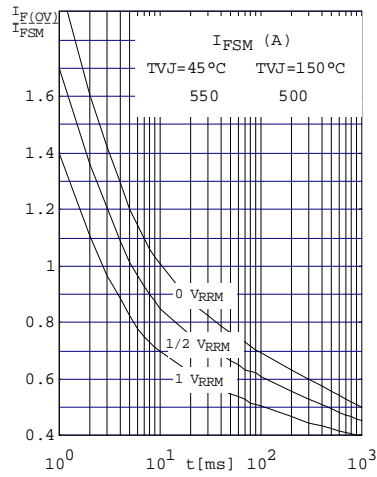
Package style and outline

Dimensions in mm (1mm = 0.0394")

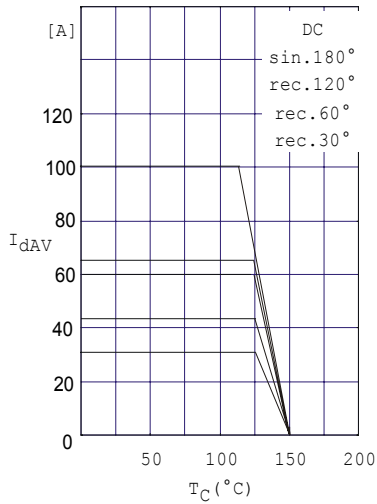




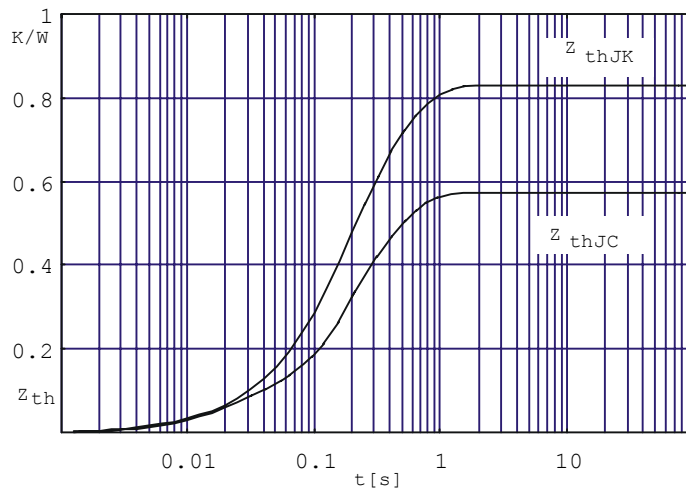
Forward current versus voltage drop per diode



Surge overload current per diode I_{FSM} : Crest value
t: duration



Maximum forward current at case temperature



Transient thermal impedance per diode

X-ON Electronics

Largest Supplier of Electrical and Electronic Components

Click to view similar products for [Bridge Rectifiers](#) category:

Click to view products by [Powersem](#) manufacturer:

Other Similar products are found below :

[MB2510](#) [MB356G](#) [MB358G](#) [MP358-BP](#) [GBJ1504-BP](#) [GBU15J-BP](#) [GBU15K-BP](#) [GBU4A-BP](#) [GBU4D-BP](#) [GBU6B-E3/45](#) [GSIB680-E3/45](#)
[DB101-BP](#) [DF01](#) [DF10SA-E345](#) [BU1508-E3/45](#) [KBPC50-10S](#) [RS405GL-BP](#) [G5SBA60-E3/51](#) [GBJ1502-BP](#) [GBU10J-BP](#) [GBU4J-BP](#)
[GBU6M](#) [GBU8D-BP](#) [GBU8J-BP](#) [GSIB1520-E3/45](#) [2KBB10](#) [36MB140A](#) [TB102M](#) [MB1510](#) [MB258](#) [MB6M-G](#) [MB86](#) [TL401G](#)
[MDA920A2](#) [TU602](#) [TU810](#) [BR1005-BP](#) [BR101-BP](#) [BR84DTP204](#) [BU2006-E3/45](#) [BU2008-E3/51](#) [36MB100A](#) [36MT160](#) [36MT60](#)
[KBPC25-02](#) [VS-2KBB60](#) [DBB08G-TM-E](#) [DBD250G](#) [DBF20G](#) [DF06SA-E345](#)