

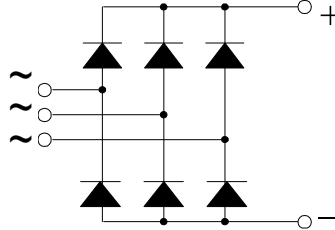
Three Phase Rectifier Bridges Slim Version

PSDS 62

$I_{dAVM} = 63A$
 $V_{RRM} = 800-1800 V$

Preliminary Data Sheet

| V_{RSM} V | V_{RRM} V | Type |
|----------------|----------------|------------|
| 800 | 800 | PSDS 62/08 |
| 1200 | 1200 | PSDS 62/12 |
| 1400 | 1400 | PSDS 62/14 |
| 1600 | 1600 | PSDS 62/16 |
| 1800 | 1800 | PSDS 62/18 |



| Symbol | Test Conditions | Maximum Ratings |
|---------------|---|--------------------------|
| I_{dAVM} | $T_C = 110^\circ C$, module | 63 A |
| I_{FSM} | $T_{VJ} = 45^\circ C$ $V_R = 0$ $t = 10$ ms (50 Hz), sine | 550 A |
| | $t = 8.3$ ms (60 Hz), sine | 600 A |
| | $T_{VJ} = T_{VJM}$ $V_R = 0$ $t = 10$ ms (50 Hz), sine | 500 A |
| $\int i^2 dt$ | $T_{VJ} = 45^\circ C$ $V_R = 0$ $t = 10$ ms (50 Hz), sine | 1520 $A^2 s$ |
| | $t = 8.3$ ms (60 Hz), sine | 1520 $A^2 s$ |
| | $T_{VJ} = T_{VJM}$ $V_R = 0$ $t = 10$ ms (50 Hz), sine | 1250 $A^2 s$ |
| | $t = 8.3$ ms (60 Hz), sine | 1250 $A^2 s$ |
| T_{VJ} | | -40 ... + 150 $^\circ C$ |
| T_{VJM} | | 150 $^\circ C$ |
| T_{stg} | | -40 ... + 125 $^\circ C$ |
| V_{ISOL} | 50/60 HZ, RMS $t = 1$ min | 2500 V ~ |
| | $I_{ISOL} \leq 1$ mA $t = 1$ s | 3000 V ~ |
| M_d | Max. mounting torque (M5) | 5 Nm |
| | Max. terminal connection torque (M5) | 5 Nm |
| Weight | typ. | 120 g |

| Symbol | Test Conditions | Characteristic Value |
|------------|---------------------------------------|----------------------|
| I_R | $V_R = V_{RRM}$ $T_{VJ} = 25^\circ C$ | ≤ 0.3 mA |
| | $V_R = V_{RRM}$ $T_{VJ} = T_{VJM}$ | ≤ 5 mA |
| V_F | $I_F = 150$ A $T_{VJ} = 25^\circ C$ | ≤ 1.8 V |
| V_{TO} | For power-loss calculations only | 0.8 V |
| r_T | $T_{VJ} = T_{VJM}$ | 8 $m\Omega$ |
| R_{thJC} | per diode; DC current | 1.45 K/W |
| | per module | 0.24 K/W |
| R_{thJK} | per diode; DC current | 1.87 K/W |
| | per module | 0.31 K/W |
| d_s | Creeping distance on surface | 10.0 mm |
| d_A | Creeping distance in air | 9.4 mm |
| a | Max. allowable acceleration | 50 m/s^2 |

Features

- Low profile (overall height: 17 mm)
- Package with screw terminals
- Isolation voltage 3000 V~
- Planar glasspassivated chips
- Blocking voltage up to 1800 V
- Low forward voltage drop
- UL release applied, RoHS conform

Applications

- Supplies for DC power equipment
- Input rectifiers for PWM inverter
- Battery DC power supplies
- Field supply for DC motors
- etc.

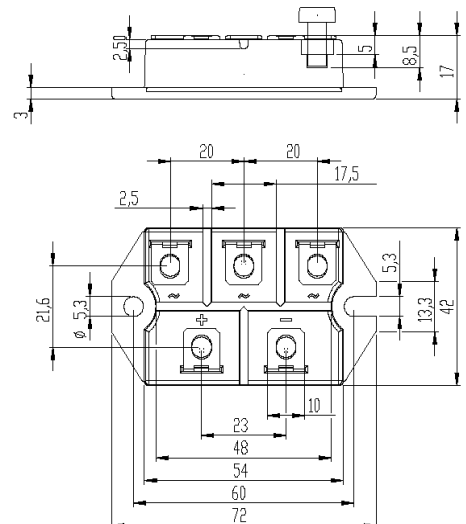
Advantages

- Easy to mount with two screws
- Space and weight savings
- Improved temperature and power cycling capability

Package, style and outline

Dimensions in mm (1mm = 0.0394")

Max. allowed screw-in depth: 8.5 mm !



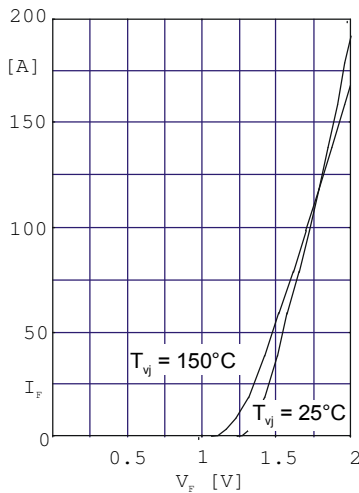


Fig. 1 Forward current versus voltage drop per diode

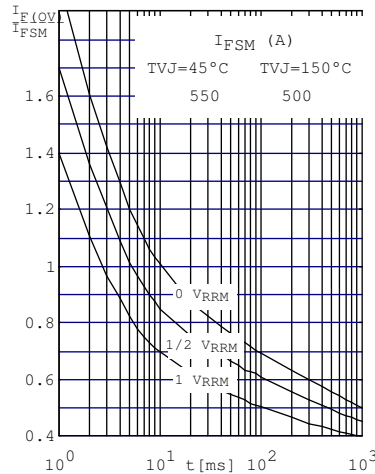


Fig. 2 Surge overload current per diode I_{FSM} : Crest value. t : duration

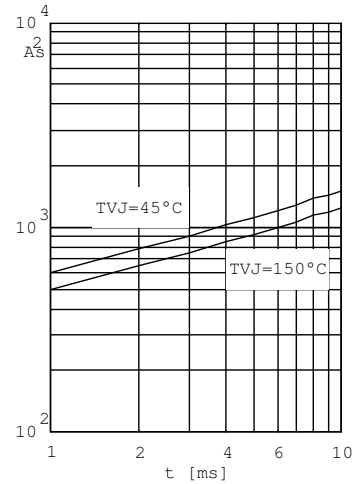


Fig. 3 $\int i^2 dt$ versus time (1-10ms) per diode (or thyristor)

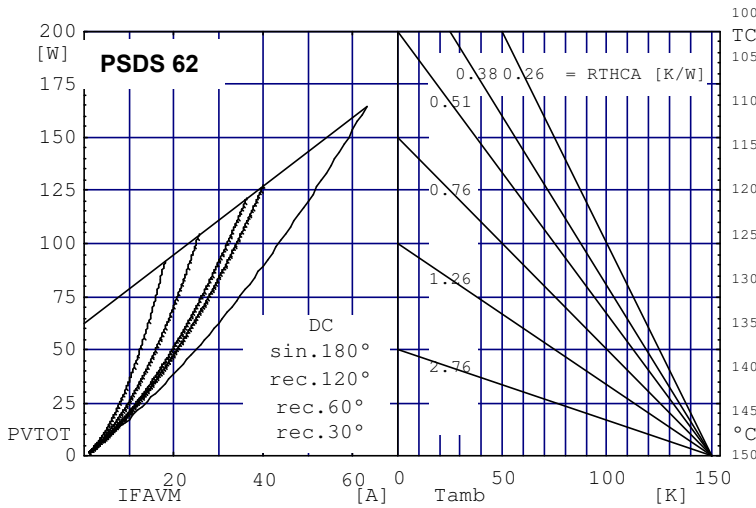


Fig. 4 Power dissipation versus direct output current and ambient temperature

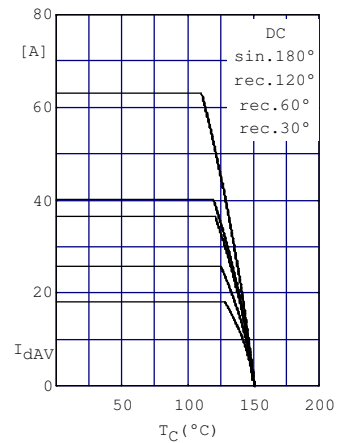


Fig. 5 Maximum forward current at case temperature

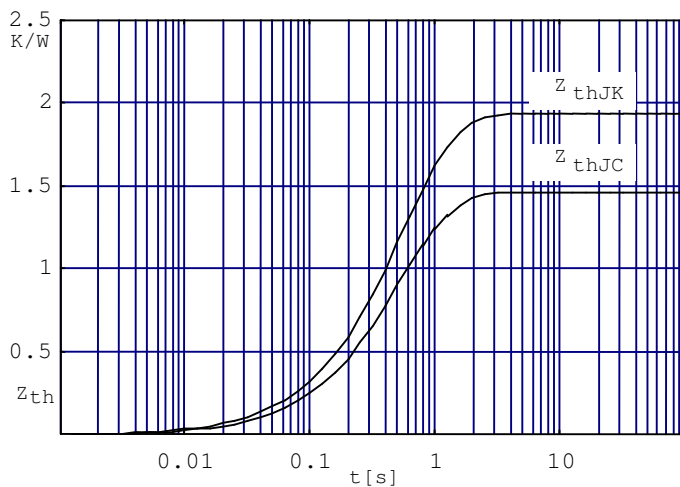


Fig. 6 Transient thermal impedance per diode (or thyristor), Calculated

X-ON Electronics

Largest Supplier of Electrical and Electronic Components

Click to view similar products for [Bridge Rectifiers](#) category:

Click to view products by [Powersem](#) manufacturer:

Other Similar products are found below :

[MB2510](#) [MB252](#) [MB356G](#) [MB358G](#) [GBJ1504-BP](#) [GBU15J-BP](#) [GBU15K-BP](#) [GBU4A-BP](#) [GBU4D-BP](#) [GBU6B-E3/45](#) [GSIB680-E3/45](#)
[DB101-BP](#) [DF01](#) [DF10SA-E345](#) [BU1508-E3/45](#) [KBPC50-10S](#) [RS405GL-BP](#) [G5SBA60-E3/51](#) [GBJ1502-BP](#) [GBU10J-BP](#) [GBU4J-BP](#)
[GBU6M](#) [GBU8D-BP](#) [GBU8J-BP](#) [GSIB1520-E3/45](#) [2KBB10](#) [36MB140A](#) [TB102M](#) [MB1510](#) [MB258](#) [MB6M-G](#) [MB86](#) [TL401G](#)
[MDA920A2](#) [TU602](#) [TU810](#) [BR1005-BP](#) [BR101-BP](#) [BR84DTP204](#) [BU2008-E3/51](#) [36MB100A](#) [36MT160](#) [KBPC25-02](#) [VS-2KBB60](#)
[DBB08G-TM-E](#) [DBD250G](#) [DBF20G](#) [DF06SA-E345](#) [DF1510S](#) [VS-40MT160PAPBF](#)