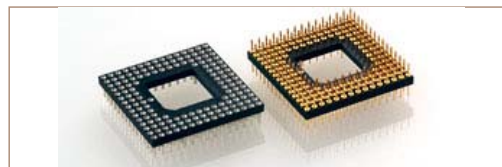


PGA / BGA / PLCC - INTERCONNECT PIN SOLDER TAIL

Series 550
 PGA / BGA / PLCC - Interconnect pin solder tail
 PGA
 Interconnect pin solder tail



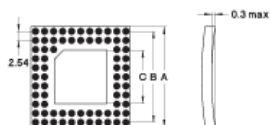
Pin grid array sockets, interconnect pin

Technical specs.:

Insulator: Black glass filled polyester
 PCT-GF30-FR
 Flammability: UL 94V-O
 Pin: Brass CuZn36Pb3 (C36000)
 Mechanical life: Min. 100 cycles
 Rated current: 1 A
 Contact resistance: Max. 10 mΩ
 Dielectric strength: Min. 1000 V RMS

Dimensions

Calculate with n1 = number of contacts in one line and n2 = characteristic size of the window



A = n1 × 2.54
 B = (n1 - 1) × 2.54
 C = (n2 × 2.54) - 0.40

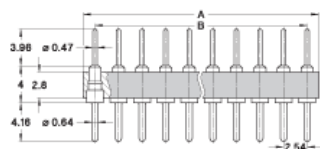
Ordering information RoHS-compliant parts

PP Plating code	Termination	Connecting pin
10	Gold 0.25 μm	Gold 0.25 μm
80	Tin	Tin

Replace **NNN** with the number of poles and **XX-XXX** with body size and **layout numbers** as indicated [here](#). For example a 17x17 pin configuration with window and 168 contacts as shown [here](#) becomes 550-10-**168-17-101**101.

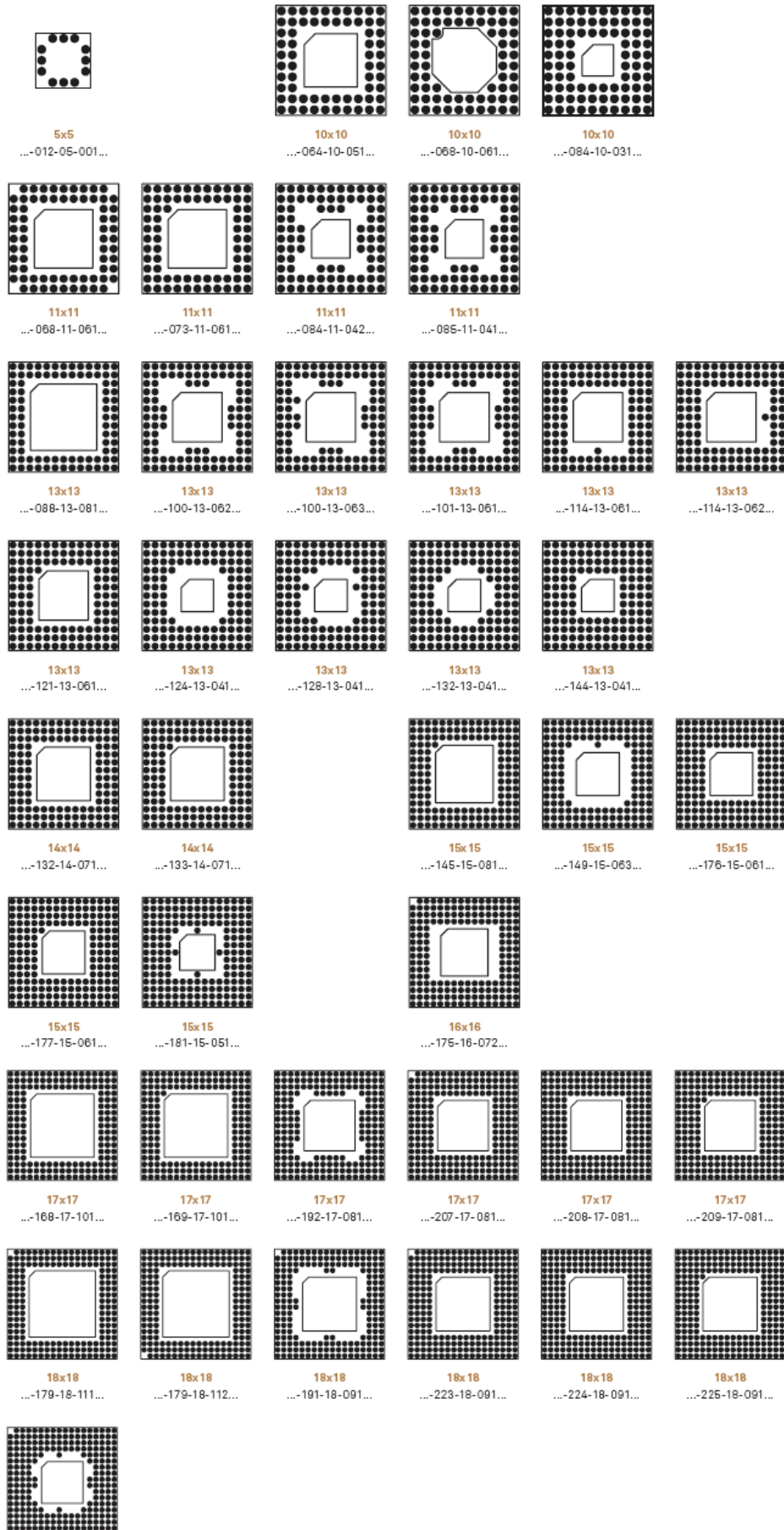
Options: please consult for availability.
 - PGA interconnect sockets with other contact lengths.

General technical specs. ...



550-PP-NNN-XX-XXX101

PGA interconnect sockets with through hole solder tails and connecting pin Ø 0.47 mm.



X-ON Electronics

Largest Supplier of Electrical and Electronic Components

Click to view similar products for [IC & Component Sockets](#) category:

Click to view products by [Precidip](#) manufacturer:

Other Similar products are found below :

[614-DG5](#) [670](#) [672](#) [673](#) [712-93-120-41-001000](#) [714-93-104-31-018000](#) [8-1437531-4](#) [8150-6P10](#) [835-43-014-10-001000](#) [851-41-006-10-001000](#) [851-43-008-20-001000](#) [851-43-014-20-001000](#) [851-93-006-20-001000](#) [851-93-010-20-001000](#) [853-43-020-10-001000](#) [86.010.0053.0](#) [116-43-308-41-007000](#) [121-13-318-41-001000](#) [121-13-320-41-001000](#) [121-13-308-41-001000](#) [123-43-314-41-801000](#) [123-43-420-41-001000](#) [122-13-316-41-001000](#) [123-13-624-41-001000](#) [123-43-306-41-001000](#) [12-3513-11](#) [123-91-320-41-001000](#) [126-43-310-41-002000](#) [AKSUN](#) [37V-T](#) [1437503-9](#) [1437504-1](#) [APA-640-G-P](#) [146-44-308-41-013000](#) [146-43-308-41-012000](#) [160-10-308-00-001000](#) [160-40-320-00-001000](#) [214-99-306-01-670800](#) [2-382761-4](#) [2-5331677-4](#) [2-640360-3](#) [2801-3-00-44-00-00-07-0](#) [940-44-052-17-400004](#) [299-83-314-11-001101](#) [1986000-2](#) [2103331641101000](#) [210-43-320-41-001000](#) [210-99-628-41-001000](#) [2-1437504-6](#) [2-1437515-5](#) [2-1437531-2](#)