

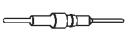




**Series 999 jumpers are available**  
With insulators in various colors for easier identification

Male version will fit standard receptacles; female version with open or closed body fits square pin headers

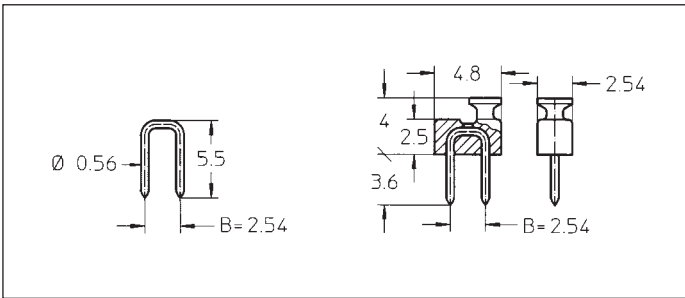
Platings	Sleeve 	Clip 	Pin 
19 39 90			0.25 $\mu\text{m}$ Au* 0.75 $\mu\text{m}$ Au* 5 $\mu\text{m}$ Sn Pb * selective

**Ordering information**

Replace **xx** with required plating code  
Applies to jumpers for square pin headers only

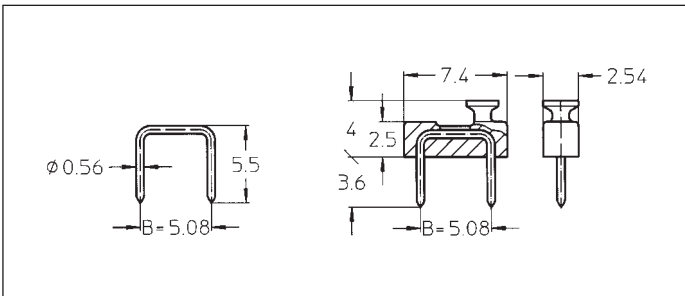
**Option:**

Wire dia 0.50 mm instead of 0.56 mm. Change second group of figures into 51. Example: 999-11-113-10 becomes 999-51-113-10. (Applies only to jumpers for receptacle connectors without insulator)



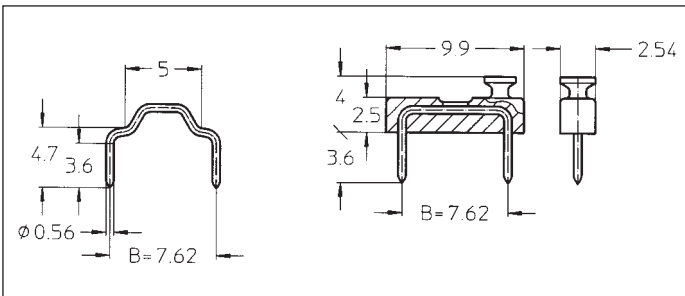
Platings:	
0.25 $\mu\text{m}$ Au	5 $\mu\text{m}$ Sn Pb
999-11-110-10	999-11-110-90
999-11-210-10	999-11-210-90
999-11-210-11	999-11-210-91

Jumpers for receptacle connectors. B = 2.54 mm  
Insulator:  
none  
black  
red



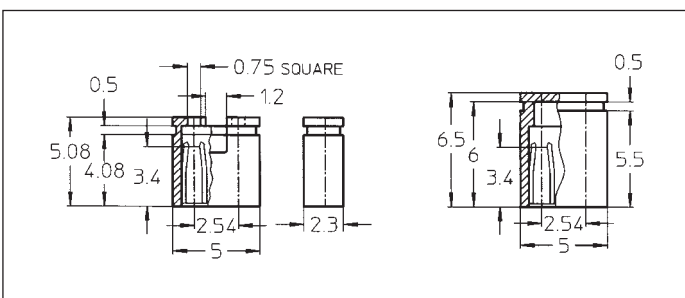
Platings:	
0.25 $\mu\text{m}$ Au	5 $\mu\text{m}$ Sn Pb
999-11-112-10	999-11-112-90
999-11-220-10	999-11-220-90
999-11-220-11	999-11-220-91

Jumpers for receptacle connectors. B = 5.08 mm  
Insulator:  
none  
black  
red



Platings:	
0.25 $\mu\text{m}$ Au	5 $\mu\text{m}$ Sn Pb
999-11-113-10	999-11-113-90
999-11-230-10	999-11-230-90
999-11-230-11	999-11-230-91

Jumpers for receptacle connectors. B = 7.62 mm  
Insulator:  
none  
black  
red



Body style	
Open body	Closed body
999-xx-310-00	999-xx-210-00
999-xx-310-02	999-xx-210-02
999-xx-310-06	999-xx-210-06

Female jumpers for 2.54 mm square pin headers:  
black  
red  
blue

## X-ON Electronics

Largest Supplier of Electrical and Electronic Components

*Click to view similar products for [Headers & Wire Housings](#) category:*

*Click to view products by [Precidip](#) manufacturer:*

Other Similar products are found below :

[892-18-020-10-001101](#) [58102-G61-06LF](#) [582553-1](#) [0009485154](#) [009176003701906](#) [0050291907](#) [LY20-4P-DT1-P1E-BR](#) [02.125.8002.8](#)  
[609-3404](#) [61062-3](#) [61082-181009](#) [622-3653LF](#) [63453-116](#) [636-1030](#) [636-1427](#) [636-3427](#) [636-4007](#) [641938-9](#) [641991-4](#) [644827-2](#) [65817-](#)  
[010LF](#) [65817-015LF](#) [65863-015LF](#) [66207-023LF](#) [67095-007LF](#) [67601157](#) [68645-018](#) [68648-049](#) [70.362.1628.0](#) [70-4210](#) [70-4226B](#) [70-](#)  
[4853B](#) [707-5020](#) [707-5028](#) [71.350.2428.0](#) [71918-208LF](#) [71961-016LF](#) [733-134](#) [733-162](#) [754199-000](#) [760-3052](#) [787-8014-00](#) [79531-3000](#)  
[FCN-360C032-B](#) [FCN-367T-T012/H](#) [FCN-723D010/2](#) [80.063.4001.1](#) [800-90-001-10-001000](#) [800-90-010-10-002000](#) [801-43-002-10-013000](#)