

## Specifications of ESD lab coats



**STC120x in blue**

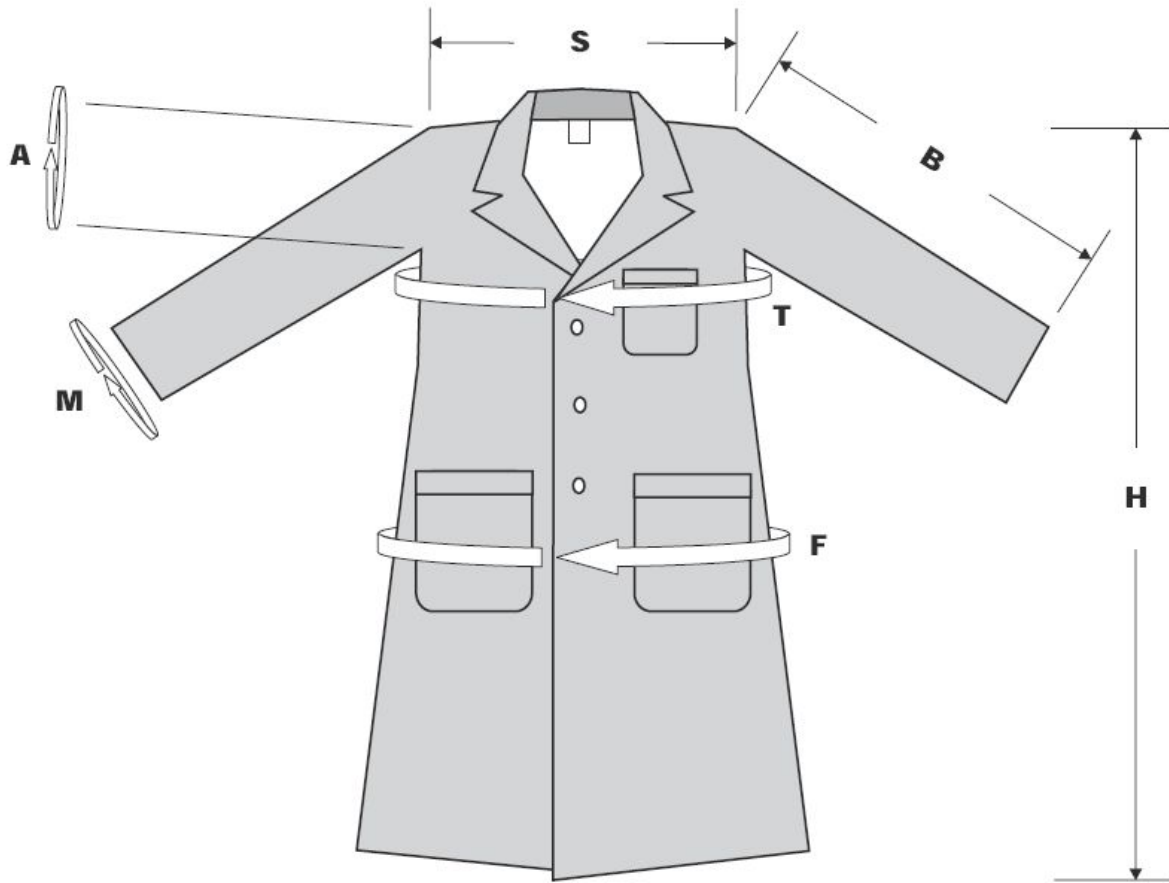
**STC110x in white**

StaticTec lightweight garments, made from dissipative fabric, protect against residual static charges that can build up on personnel and non-ESD private clothing. Sizes are ¾ length and are according to European standards. The lab coats have a pocket on the breast (left) with a yellow ESD logo as standard. Also there are 2 pockets placed on the sides. Nickel free push buttons are applied on front (hidden) and sleeves of the lab coat. Available as option is your company logo in embroidered quality.

### **Specifications:**

Breathable, lightweight fabric	156 g/m <sup>2</sup>
Material	65% polyester, 32% cotton, 3% Conductex filament, 5mm grid
Machine wash	allowed, max. 60°C
Electrical properties	according to IEC 61340-5-1
Surface resistance	10*5 – 10*7 Ω

STC1101	Labcoat, dissipative, colour white, size XS
STC1102	Labcoat, dissipative, colour white, size S
STC1103	Labcoat, dissipative, colour white, size M
STC1104	Labcoat, dissipative, colour white, size L
STC1105	Labcoat, dissipative, colour white, size XL
STC1106	Labcoat, dissipative, colour white, size XXL
STC1201	Labcoat, dissipative, colour blue, size XS
STC1202	Labcoat, dissipative, colour blue, size S
STC1203	Labcoat, dissipative, colour blue, size M
STC1204	Labcoat, dissipative, colour blue, size L
STC1205	Labcoat, dissipative, colour blue, size XL
STC1206	Labcoat, dissipative, colour blue, size XXL



	<b>XS</b>	<b>S</b>	<b>M</b>	<b>L</b>	<b>XL</b>	<b>XXL</b>
Wrist opening (M)	30	32	34	34	36	36
Sleeve Length (B)	57	59	63	63	66	72
Height (H)	91	93	96	98	102	106
Waist(F)	102	112	118	126	134	144
Chest (T)	97	106	117	124	130	138
Shoulders (S)	44	46	49	51	53	59
Sleeve Opening (A)	46	47	52	54	56	62

*The information contained within this spec sheet is for guidance only. We make no warranties expressed or implied and assume no liability regarding any use of this information.*

## **X-ON Electronics**

Largest Supplier of Electrical and Electronic Components

*Click to view similar products for [PRINTTEC](#) manufacturer:*

Other Similar products are found below :

[ST250020](#) [ST250030](#) [ST250050](#) [STC0500](#) [STC0510](#) [STC0520](#) [STC0530](#) [STC1102](#) [STC1103](#) [STC1104](#) [STC1105](#) [STC1106](#) [STC1107](#)  
[STC1152](#) [STC1155](#) [STC1165](#) [STC1201](#) [STC1202](#) [STC1203](#) [STC1204](#) [STC1205](#) [STC1206](#) [STC1207](#) [STC4104](#) [STC4105](#) [STC4204](#)  
[STC4205](#) [STC4403](#) [STC4405](#) [STC5102](#) [STC5103](#) [STC5104](#) [STC5201](#) [STC5302](#) [STC5303](#) [STC5401](#) [STC5402](#) [STC5403](#) [STC5502](#)  
[STC5503](#) [STC5902](#) [STCL11106](#) [STCL11109](#) [STF01013538](#) [STF01014346](#) [STF01014750](#) [STL1222](#) [STL1638](#) [STL2545](#) [STL3875](#)