

產品編碼 P/N	PSPNAQ201610~1050series	測試設備 TEST INSTRUMENT	Chroma 3302 16502
產品系列 Series	贴片绕线功率电感(NR)	測試頻率 TEST FREQUENCY	100KHZ / 1V

客戶名稱
Customer :

客戶編碼
Customer P/N :

產品系列
Series : 贴片绕线功率电感(NR)
Wire Wound SMD Power Inductors

產品編碼
Supply P/N : PSPNAQ201610~1050series

發版號
Version : A3.0

承認日期
Endorsement Date : 2022-9-15

備註
Note :

譜羅德電子科技（深圳）有限公司 PuLuoDe Electronic Technology (Shenzhen) Co. LTD	
製作 APPROVED	Ben
審查 CHECKED	Yuki
確認 PREPARED	Peter

客戶承認

Customer Approval

客戶簽章



修訂記錄 REVISION RECORD



產品編碼 P/N	PSPNAQ201610~1050series	測試設備 TEST INSTRUMENT	Chroma 3302 16502
產品系列 Series	贴片绕线功率电感(NR)	測試頻率 TEST FREQUENCY	100KHZ / 1V

Version	REVISION ITEM	BEFORE REVISION	AFTER REVISION	DATE
A3.0	First Version			2022-9-15



谱罗德电子科技（深圳）有限公司
PuLuoDe Electronic Technology (Shenzhen) Co., LTD
深圳市寶安區石岩三聯工業區B棟311

更多规格请访问谱罗德官方网站
下载或者扫描二维码通过微信小程序获取
<https://www.prodtech.cn/>



產品編碼 P/N	PSPNAQ201610~1050series	測試設備 TEST INSTRUMENT	Chroma 3302 16502
產品系列 Series	贴片绕线功率电感(NR)	測試頻率 TEST FREQUENCY	100KHZ / 1V

产品特点

Features

- ☐ 闭磁结构能有效降低电感噪音
Magnetic-resin shielded construction reduces buzz noise to ultra-low levels
- ☐ 铁氧体磁芯拥有更好的抗机械冲击能力和抗老化能力
Metallization on ferrite core results in excellent shock resistance and damage-free durability
- ☐ 闭磁结构有效降低电磁干扰
Closed magnetic circuit design reduces leakage flux and Electro Magnetic Interference (EMI)
- ☐ 超小超薄的结构减少PCB的占用面积
Takes up less PCB real estate and save more power



編碼解釋

Code interpretation

PSPNAQ	1050	4R7	-	M
類別碼	尺寸系列	系列碼		公差
Category code	Dimension	Inductance		Tolerance

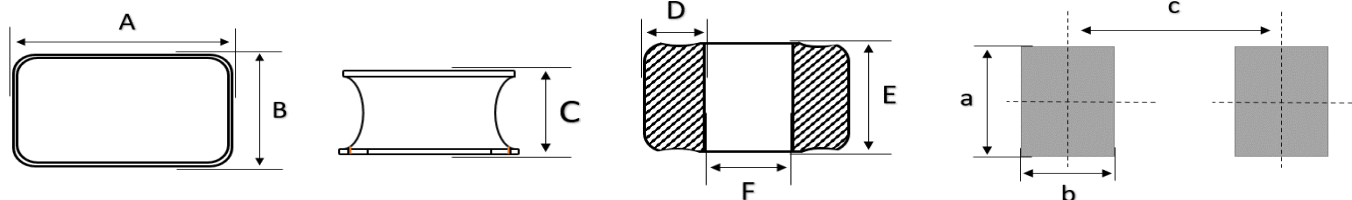
- ◎ 規格參數基於環境溫度25℃取得
All test Data is referenced to 25℃ ambient
- ◎ 電感工作環境溫度：-40℃ ~ 125℃
Operating temperature range -40 °C to +125 °C
- ◎ 加載溫升電流（I_{rms}）會使電感溫度上升大約 40℃（電感初始溫度+上升溫度=電感最終溫度）
Typical I_{rms} would cause an approximately ΔT of 40℃
- ◎ 加載飽和電流（ISAT）會使感量下降大約30%
Typical ISAT would cause L_o to drop approximately 30%.
- ◎ 請從溫升電流（IRMS）和飽和電流（ISAT）中選取一個最小值作為額定電流
Choose a minimum of IRMS and ISAT as the rated current
- ◎ 務必考慮最終的產品設計，元器件佈局，線路板走線，以及使用環境過程中，電感最終溫度不得超過125℃
The operating temperature of inductance do not exceed 125℃
- ◎ 使用電感時，請查閱第25頁注意事項
The announcements is on page 26



產品編碼 P/N	PSPNAQ201610~1050series	測試設備 TEST INSTRUMENT	Chroma 3302 16502
產品系列 Series	贴片绕线功率电感(NR)	測試頻率 TEST FREQUENCY	100KHZ / 1V

封裝尺寸
Dimension (mm)

焊盤尺寸
Land Pattern



系列 Series	封裝尺寸 Dimension						焊盤尺寸 Land Pattern			MPQ
	A	B	C	D	E	F	a	b	c	盘装
201610	2.0±0.2	1.6±0.1	1.0 MAX	1.6±0.1	0.6 Ref	0.8 Ref	0.7 Typ	1.7 Typ	0.7 Typ	2000

201610

產品編碼 P/N	@ 25 °C Ambient Temperture				
	感值	公差	DCR	溫升電流 (IRMS)	飽和電流 (ISAT)
	Inductance	Tolerance	Ω	mA	mA
	μH	\pm	MAX	$\Delta T \approx 40^\circ\text{C}$	L0 drop $\approx 30\%$
PSPNAQ201610-R47N	0.47	30%	0.052	2600	3000
PSPNAQ201610-R68N	0.68	30%	0.074	2300	2500
PSPNAQ201610-1R0M	1.00	20%	0.096	1800	2000
PSPNAQ201610-1R5M	1.50	20%	0.15	1400	1700
PSPNAQ201610-2R2M	2.20	20%	0.17	1400	1500
PSPNAQ201610-3R3M	3.30	20%	0.29	1100	1100
PSPNAQ201610-4R7M	4.70	20%	0.43	1000	850
PSPNAQ201610-6R8M	6.80	20%	0.6	700	800
PSPNAQ201610-100M	10.00	20%	0.86	500	620
PSPNAQ201610-150M	15.00	20%	1.6	400	500
PSPNAQ201610-180M	18.00	20%	2.1	380	450
PSPNAQ201610-220M	22.00	20%	2.4	300	430

Page 4 / 26



谱罗德电子科技(深圳)有限公司
PuLuoDe Electronic Technology (Shenzhen) Co., LTD

深圳市寶安區石岩三聯工業區B棟311

更多规格请访问谱罗德官方网站
下载或者扫描二维码通过微信小程序
获取

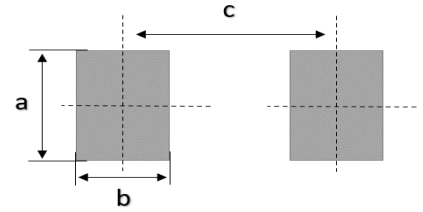
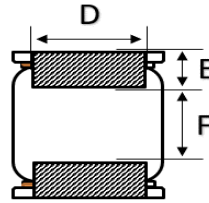
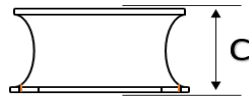
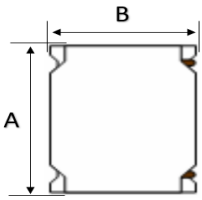
<https://www.prodtech.cn/>



產品編碼 P/N	PSPNAQ201610~1050series	測試設備 TEST INSTRUMENT	Chroma 3302 16502
產品系列 Series	贴片绕线功率电感(NR)	測試頻率 TEST FREQUENCY	100KHZ / 1V

封裝尺寸
Dimension (mm)

焊盤尺寸
Land Pattern



系列 Series	封裝尺寸 Dimension						焊盤尺寸 Land Pattern			MPQ
	A	B	C	D	E	F	a	b	c	盘装
252010	2.5±0.2	2.0±0.2	1.0 MAX	1.5 Ref	0.8 Ref	0.8 Ref	0.85 Typ	2.0 Typ	0.8 Typ	2000pcs
252012	2.5±0.2	2.0±0.2	1.2 MAX	1.5 Ref	0.8 Ref	0.8 Ref	0.85 Typ	2.0 Typ	0.8 Typ	2000pcs

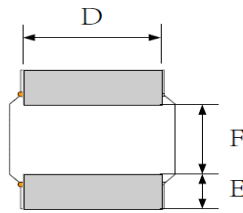
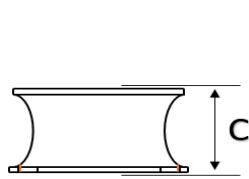
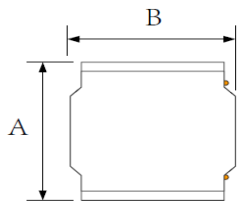
201610~252012

產品編碼 P/N	@ 25 °C Ambient Temperature				
	感值	公差	DCR	溫升電流 (IRMS)	飽和電流 (ISAT)
	Inductance	Tolerance	Ω	mA	mA
	μH	\pm	MAX	$\Delta T \approx 40^\circ\text{C}$	L0 drop $\approx 30\%$
PSPNAQ252010-R47N	0.47	30%	0.054	3000	3700
PSPNAQ252010-R68N	0.68	30%	0.072	2400	3000
PSPNAQ252010-1R0M	1.00	20%	0.11	2000	2500
PSPNAQ252010-1R5M	1.50	20%	0.17	1600	2300
PSPNAQ252010-2R2M	2.20	20%	0.19	1300	1700
PSPNAQ252010-3R3M	3.30	20%	0.31	1100	1400
PSPNAQ252010-4R7M	4.70	20%	0.53	900	1200
PSPNAQ252010-6R8M	6.80	20%	0.85	800	1000
PSPNAQ252010-100M	10.00	20%	1	640	870
PSPNAQ252010-150M	10.00	20%	1.1	450	500
<hr/>					
PSPNAQ252012-R24N	0.24	30%	0.036	3900	5400
PSPNAQ252012-R33N	0.33	30%	0.042	3600	5000
PSPNAQ252012-R47M	0.47	20%	0.045	3700	4500
PSPNAQ252012-R68M	0.68	20%	0.079	3300	3800
PSPNAQ252012-1R0M	1.00	20%	0.092	2600	3300
PSPNAQ252012-1R5M	1.50	20%	0.12	2200	2800
PSPNAQ252012-2R2M	2.20	20%	0.15	1800	2300
PSPNAQ252012-3R3M	3.30	20%	0.21	1400	2000
PSPNAQ252012-4R7M	4.70	20%	0.34	1200	1500
PSPNAQ252012-6R8M	6.80	20%	0.48	1000	1200
PSPNAQ252012-100M	10.00	20%	0.62	750	1100
PSPNAQ252012-150M	15.00	20%	1.3	600	850
PSPNAQ252012-220M	22.00	20%	1.6	500	660

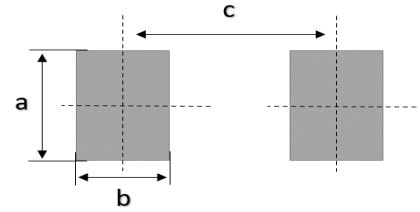


產品編碼 P/N	PSPNAQ201610~1050series	測試設備 TEST INSTRUMENT	Chroma 3302 16502
產品系列 Series	贴片绕线功率电感(NR)	測試頻率 TEST FREQUENCY	100KHZ / 1V

封裝尺寸
Dimension (mm)



焊盤尺寸
Land Pattern



系列 Series	封裝尺寸 Dimension						焊盤尺寸 Land Pattern			MPQ
	A	B	C	D	E	F	a	b	c	盘装
3010	3.0±0.2	3.0±0.2	1.0 MAX	2.5 Ref	0.75 Ref	1.5 Ref	0.8 Typ	2.7 Typ	1.5 Typ	2000pcs

3010

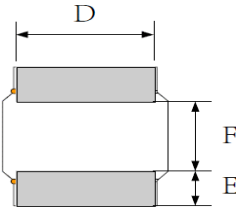
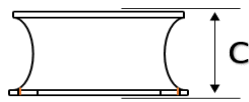
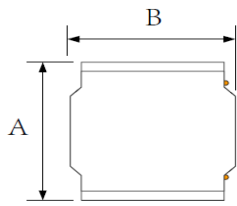
產品編碼 P/N	@ 25 °C Ambient Temperture				
	感值	公差	DCR	溫升電流 (IRMS)	飽和電流 (ISAT)
	Inductance	Tolerance	Ω	mA	mA
	μH	±	MAX	ΔT≈40°C	L0 drop≈30%
PSPNAQ3010-1R0N	1.00	30%	0.085	1800	2100
PSPNAQ3010-1R5N	1.50	30%	0.104	1600	1700
PSPNAQ3010-2R2N	2.20	30%	0.14	1400	1500
PSPNAQ3010-3R3N	3.30	30%	0.18	1200	1200
PSPNAQ3010-4R7M	4.70	20%	0.29	1100	1050
PSPNAQ3010-6R8M	6.80	20%	0.39	960	720
PSPNAQ3010-100M	10.00	20%	0.52	700	750
PSPNAQ3010-120M	12.00	20%	0.65	670	650
PSPNAQ3010-150M	15.00	20%	0.79	570	570
PSPNAQ3010-220M	22.00	20%	1.2	520	480
PSPNAQ3010-330M	33.00	20%	2	550	420
PSPNAQ3010-390M	39.00	20%	2.2	530	380
PSPNAQ3010-470M	47.00	20%	2.5	520	350
PSPNAQ3010-510M	51.00	20%	2.8	480	330
PSPNAQ3010-560M	56.00	20%	3	350	280

Page 6 / 26

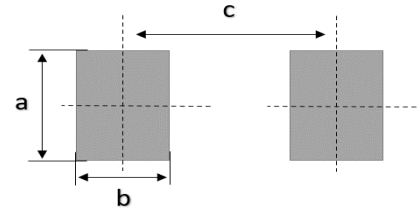


產品編碼 P/N	PSPNAQ201610~1050series	測試設備 TEST INSTRUMENT	Chroma 3302 16502
產品系列 Series	贴片绕线功率电感(NR)	測試頻率 TEST FREQUENCY	100KHZ / 1V

封裝尺寸
Dimension (mm)



焊盤尺寸
Land Pattern



系列 Series	封裝尺寸 Dimension						焊盤尺寸 Land Pattern			MPQ
	A	B	C	D	E	F	a	b	c	盘装
3012	3.0±0.2	3.0±0.2	1.2 MAX	2.5 Ref	0.75 Ref	1.5 Ref	0.8 Typ	2.7 Typ	1.5 Typ	2000pcs

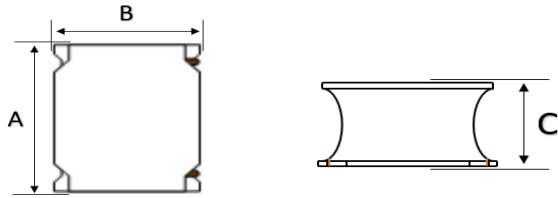
3012

產品編碼 P/N	@ 25 °C Ambient Temperture				
	感值	公差	DCR	溫升電流 (IRMS)	飽和電流 (ISAT)
	Inductance	Tolerance	Ω	mA	mA
	μH	\pm	MAX	$\Delta T \approx 40^\circ\text{C}$	L0 drop $\approx 30\%$
PSPNAQ3012-R82N	0.82	30%	0.039	3000	2800
PSPNAQ3012-1R0N	1.00	30%	0.052	2700	2800
PSPNAQ3012-1R5N	1.50	30%	0.059	2200	1900
PSPNAQ3012-1R8N	1.80	30%	0.082	1800	1900
PSPNAQ3012-2R2N	2.20	30%	0.098	1700	1900
PSPNAQ3012-3R3M	3.30	20%	0.13	1400	1500
PSPNAQ3012-4R7M	4.70	20%	0.15	1300	1000
PSPNAQ3012-6R8M	6.80	20%	0.24	1100	900
PSPNAQ3012-100M	10.00	20%	0.34	900	900
PSPNAQ3012-120M	12.00	20%	0.44	840	670
PSPNAQ3012-150M	15.00	20%	0.46	770	620
PSPNAQ3012-180M	18.00	20%	0.7	650	590
PSPNAQ3012-220M	22.00	20%	0.83	590	520
PSPNAQ3012-270M	27.00	20%	1	510	480
PSPNAQ3012-330M	33.00	20%	1.1	500	460
PSPNAQ3012-360M	36.00	20%	1.2	480	440
PSPNAQ3012-390M	39.00	20%	1.7	410	390
PSPNAQ3012-470M	47.00	20%	1.8	400	350
PSPNAQ3012-560M	56.00	20%	1.7	400	330
PSPNAQ3012-680M	68.00	20%	2.1	370	290
PSPNAQ3012-820M	82.00	20%	3.3	310	270
PSPNAQ3012-101M	100.00	20%	3.7	290	230

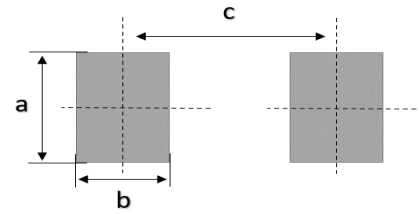


產品編碼 P/N	PSPNAQ201610~1050series	測試設備 TEST INSTRUMENT	Chroma 3302 16502
產品系列 Series	贴片绕线功率电感(NR)	測試頻率 TEST FREQUENCY	100KHZ / 1V

封裝尺寸
Dimension (mm)



焊盤尺寸
Land Pattern



系列 Series	封裝尺寸 Dimension						焊盤尺寸 Land Pattern			MPQ
	A	B	C	D	E	F	a	b	c	盘装
3015	3.0±0.2	3.0±0.2	1.5 MAX	2.5 Ref	0.75 Ref	1.5 Ref	0.8 Typ	2.7 Typ	1.5 Typ	2000pcs

3015

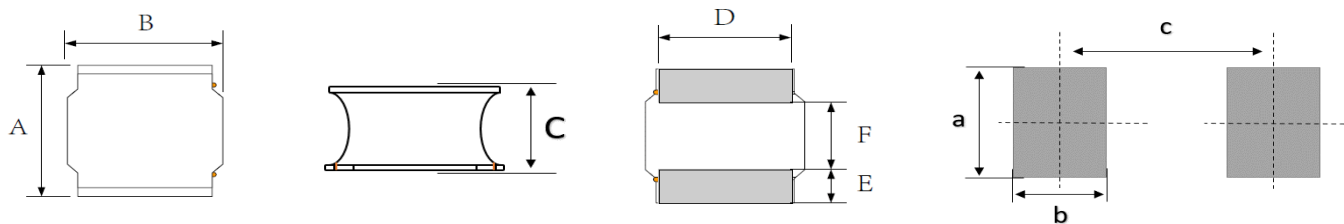
產品編碼 P/N	@ 25 °C Ambient Temperture				
	感值	公差	DCR	溫升電流 (IRMS)	飽和電流 (ISAT)
	Inductance	Tolerance	Ω	mA	mA
	μH	\pm	MAX	$\Delta T \approx 40^\circ\text{C}$	L0 drop $\approx 30\%$
PSPNAQ3015-R47N	0.47	30%	0.027	2600	3900
PSPNAQ3015-1R0M	1.00	20%	0.039	2500	2800
PSPNAQ3015-1R5M	1.50	20%	0.065	2200	2700
PSPNAQ3015-2R2M	2.20	20%	0.078	2000	2000
PSPNAQ3015-2R7M	2.70	20%	0.098	1900	1900
PSPNAQ3015-3R3M	3.30	20%	0.1	1600	1800
PSPNAQ3015-4R7M	4.70	20%	0.16	1300	1400
PSPNAQ3015-5R6M	5.60	20%	0.2	1100	1300
PSPNAQ3015-6R2M	6.20	20%	0.25	1100	1200
PSPNAQ3015-6R8M	6.80	20%	0.26	1100	1100
PSPNAQ3015-100M	10.00	20%	0.32	900	920
PSPNAQ3015-120M	12.00	20%	0.41	900	900
PSPNAQ3015-150M	15.00	20%	0.45	720	800
PSPNAQ3015-180M	18.00	20%	0.55	720	720
PSPNAQ3015-220M	22.00	20%	0.59	690	680
PSPNAQ3015-330M	33.00	20%	1	510	530
PSPNAQ3015-390M	39.00	20%	1.29	440	550
PSPNAQ3015-470M	47.00	20%	1.62	440	430
PSPNAQ3015-560M	56.00	20%	1.66	410	420
PSPNAQ3015-680M	68.00	20%	3.5	310	370
PSPNAQ3015-101M	100.00	20%	4	250	250
PSPNAQ3015-151M	150.00	20%	4.9	230	220



產品編碼 P/N	PSPNAQ201610~1050series	測試設備 TEST INSTRUMENT	Chroma 3302 16502
產品系列 Series	贴片绕线功率电感(NR)	測試頻率 TEST FREQUENCY	100KHZ / 1V

封裝尺寸
Dimension (mm)

焊盤尺寸
Land Pattern



系列 Series	封裝尺寸 Dimension						焊盤尺寸 Land Pattern			MPQ
	A	B	C	D	E	F	a	b	c	盘装
4010	4.0±0.2	4.0±0.2	1.0 MAX	3.3 Ref	0.95 Ref	2.1 Ref	1.1 Typ	3.7 Typ	1.9 Typ	1000pcs
4012	4.0±0.2	4.0±0.2	1.2 MAX	3.3 Ref	0.95 Ref	2.1 Ref	1.1 Typ	3.7 Typ	1.9 Typ	4500pcs

4010~4012

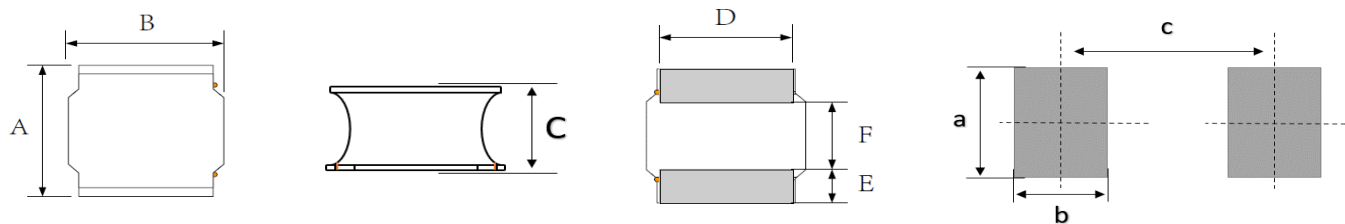
產品編碼 P/N	@ 25 °C Ambient Temperature				
	感值	公差	DCR	溫升電流 (IRMS)	飽和電流 (ISAT)
	Inductance	Tolerance	Ω	mA	mA
	μH	±	MAX	ΔT≈40°C	L0 drop≈30%
PSPNAQ4010-1R0M	1.00	20%	0.067	2400	2300
PSPNAQ4010-1R5M	1.50	20%	0.084	2000	2000
PSPNAQ4010-2R2M	2.20	20%	0.1	2000	1500
PSPNAQ4010-3R3M	3.30	20%	0.12	1800	1400
PSPNAQ4010-4R7M	4.70	20%	0.16	1500	1100
PSPNAQ4010-6R8M	6.80	20%	0.24	1200	1000
PSPNAQ4010-100M	10.00	20%	0.36	1000	800
PSPNAQ4010-150M	15.00	20%	0.51	850	650
PSPNAQ4010-220M	22.00	20%	0.68	750	500
PSPNAQ4012-R82M	0.82	20%	0.065	2500	3300
PSPNAQ4012-1R0M	1.00	20%	0.065	2500	3200
PSPNAQ4012-1R5M	1.50	20%	0.085	2200	2700
PSPNAQ4012-2R2M	2.20	20%	0.1	1900	2300
PSPNAQ4012-3R3M	3.30	20%	0.14	1600	2100
PSPNAQ4012-4R7M	4.70	20%	0.16	1500	1800
PSPNAQ4012-6R8M	6.80	20%	0.25	1200	1400
PSPNAQ4012-100M	10.00	20%	0.34	1000	1100
PSPNAQ4012-120M	12.00	20%	0.37	950	1000
PSPNAQ4012-150M	15.00	20%	0.44	850	800
PSPNAQ4012-180M	18.00	20%	0.61	800	750
PSPNAQ4012-220M	22.00	20%	0.76	750	700
PSPNAQ4012-270M	27.00	20%	0.93	600	700
PSPNAQ4012-330M	33.00	20%	1	580	600
PSPNAQ4012-360M	36.00	20%	1.1	560	500
PSPNAQ4012-390M	39.00	20%	1.4	550	500
PSPNAQ4012-470M	47.00	20%	1.4	500	500
PSPNAQ4012-560M	56.00	20%	1.6	460	450
PSPNAQ4012-680M	68.00	20%	2.5	450	450
PSPNAQ4012-820M	82.00	20%	2.7	360	400
PSPNAQ4012-101M	100.00	20%	2.8	350	300



產品編碼 P/N	PSPNAQ201610~1050series	測試設備 TEST INSTRUMENT	Chroma 3302 16502
產品系列 Series	贴片绕线功率电感(NR)	測試頻率 TEST FREQUENCY	100KHZ / 1V

封裝尺寸
Dimension (mm)

焊盤尺寸
Land Pattern



系列 Series	封裝尺寸 Dimension						焊盤尺寸 Land Pattern			MPQ
	A	B	C	D	E	F	a	b	c	盘装
4018	4.0±0.2	4.0±0.2	1.8 MAX	3.3 Ref	0.95 Ref	2.1 Ref	1.1 Typ	3.7 Typ	1.9 Typ	3000pcs

4018

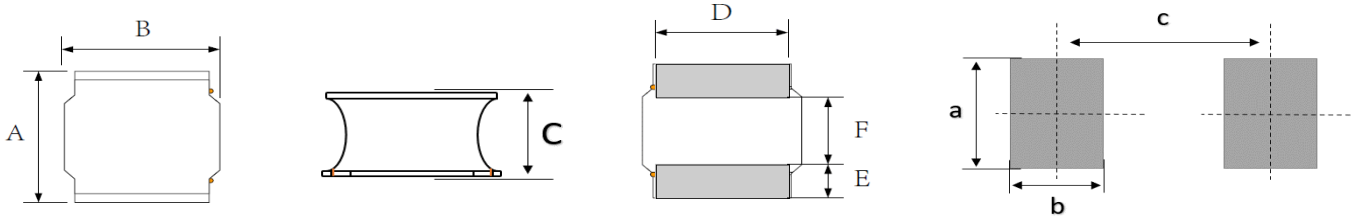
產品編碼 P/N	@ 25 °C Ambient Temperture				
	感值	公差	DCR	溫升電流 (IRMS)	飽和電流 (ISAT)
	Inductance	Tolerance	Ω	mA	mA
	μH	\pm	MAX	$\Delta T \approx 40^\circ\text{C}$	L0 drop $\approx 30\%$
PSPNAQ4018-1R0M	1.00	20%	0.033	3300	5200
PSPNAQ4018-1R5M	1.50	20%	0.039	3200	4000
PSPNAQ4018-2R2M	2.20	20%	0.059	2600	3200
PSPNAQ4018-3R3M	3.30	20%	0.09	2100	2900
PSPNAQ4018-4R7M	4.70	20%	0.11	1800	2200
PSPNAQ4018-5R6M	5.60	20%	0.12	1600	2100
PSPNAQ4018-6R8M	6.80	20%	0.14	1500	2000
PSPNAQ4018-100M	10.00	20%	0.23	1200	1600
PSPNAQ4018-150M	15.00	20%	0.32	1000	1100
PSPNAQ4018-220M	22.00	20%	0.46	850	880
PSPNAQ4018-330M	33.00	20%	0.68	720	750
PSPNAQ4018-470M	47.00	20%	0.84	650	700
PSPNAQ4018-680M	68.00	20%	1.3	520	510
PSPNAQ4018-101M	100.00	20%	2.2	410	440
PSPNAQ4018-151M	150.00	20%	3.2	360	340
PSPNAQ4018-221M	220.00	20%	5.2	270	300



產品編碼 P/N	PSPNAQ201610~1050series	測試設備 TEST INSTRUMENT	Chroma 3302 16502
產品系列 Series	贴片绕线功率电感(NR)	測試頻率 TEST FREQUENCY	100KHZ / 1V

封裝尺寸
Dimension (mm)

焊盤尺寸
Land Pattern



系列 Series	封裝尺寸 Dimension						焊盤尺寸 Land Pattern			MPQ
	A	B	C	D	E	F	a	b	c	盘装
4020	4.0±0.2	4.0±0.2	2.0 MAX	3.3 Ref	0.95 Ref	2.1 Ref	1.1 Typ	3.7 Typ	1.9 Typ	3000pcs
4026	4.0±0.2	4.0±0.2	2.6 MAX	3.3 Ref	0.95 Ref	2.1 Ref	1.1 Typ	3.7 Typ	1.9 Typ	3000pcs

4020~4026

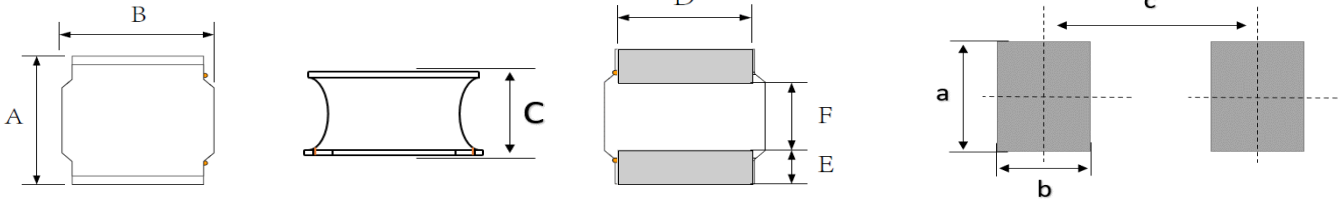
產品編碼 P/N	@ 25 °C Ambient Temperature				
	感值	公差	DCR	溫升電流 (IRMS)	飽和電流 (ISAT)
	Inductance	Tolerance	Ω	mA	mA
	μH	\pm	MAX	$\Delta T \approx 40^\circ\text{C}$	L0 drop $\approx 30\%$
PSPNAQ4020-1R0M	1.00	20%	0.038	3200	5200
PSPNAQ4020-1R5M	1.50	20%	0.046	3000	4900
PSPNAQ4020-2R2M	2.20	20%	0.052	2800	3700
PSPNAQ4020-3R3M	3.30	20%	0.09	2500	3500
PSPNAQ4020-4R7M	4.70	20%	0.098	2000	2500
PSPNAQ4020-5R1M	5.10	20%	0.11	1800	2500
PSPNAQ4020-5R6M	5.60	20%	0.12	1800	2400
PSPNAQ4020-6R2M	6.20	20%	0.15	1600	2300
PSPNAQ4020-6R8M	6.80	20%	0.16	1600	2400
PSPNAQ4020-100M	10.00	20%	0.21	1200	1700
PSPNAQ4020-120M	12.00	20%	0.22	1200	1600
PSPNAQ4020-150M	15.00	20%	0.29	1100	1500
PSPNAQ4020-220M	22.00	20%	0.45	870	1100
PSPNAQ4020-330M	33.00	20%	0.71	680	930
PSPNAQ4020-470M	47.00	20%	0.92	610	810
PSPNAQ4020-560M	56.00	20%	1	570	720
PSPNAQ4020-680M	68.00	20%	1.3	500	670
PSPNAQ4020-820M	82.00	20%	1.5	470	550
PSPNAQ4020-101M	100.00	20%	2	430	530
PSPNAQ4026-1R2N	1.20	30%	0.039	2300	3100
PSPNAQ4026-1R5N	1.50	30%	0.039	2300	2400
PSPNAQ4026-2R2M	2.20	20%	0.052	2000	2100
PSPNAQ4026-3R3M	3.30	20%	0.065	1700	1800
PSPNAQ4026-4R7M	4.70	20%	0.07	1600	1450
PSPNAQ4026-6R8M	6.80	20%	0.08	1500	1300
PSPNAQ4026-100M	10.00	20%	0.11	1300	1000
PSPNAQ4026-150M	15.00	20%	0.14	1100	900
PSPNAQ4026-220M	22.00	20%	0.21	900	600
PSPNAQ4026-330M	33.00	20%	0.35	700	550
PSPNAQ4026-470M	47.00	20%	0.39	650	400



產品編碼 P/N	PSPNAQ201610~1050series	測試設備 TEST INSTRUMENT	Chroma 3302 16502
產品系列 Series	贴片绕线功率电感(NR)	測試頻率 TEST FREQUENCY	100KHZ / 1V

封裝尺寸
Dimension (mm)

焊盤尺寸
Land Pattern



系列 Series	封裝尺寸 Dimension						焊盤尺寸 Land Pattern			MPQ
	A	B	C	D	E	F	a	b	c	盘装
4030	4.0±0.2	4.0±0.2	3.0 Max	3.3 Ref	0.95 Ref	2.1 Ref	3.7 Typ	1.1 Typ	3.0 Typ	2000

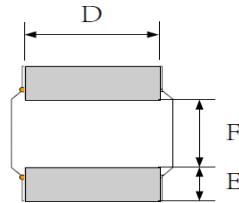
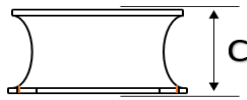
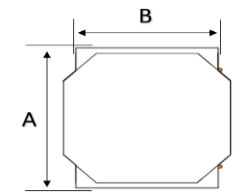
4030

產品編碼 P/N	@ 25 °C Ambient Temperture				
	感值	公差	DCR	溫升電流 (IRMS)	飽和電流 (ISAT)
	Inductance	Tolerance	Ω	mA	mA
	μH	\pm	MAX	$\Delta T \approx 40^\circ\text{C}$	L0 drop $\approx 30\%$
PSPNAQ4030-R68N	0.68	30%	0.013	5100	8000
PSPNAQ4030-1R0N	1.00	30%	0.018	4700	5700
PSPNAQ4030-1R5M	1.50	20%	0.026	3600	5300
PSPNAQ4030-2R2M	2.20	20%	0.039	3200	5800
PSPNAQ4030-3R3M	3.30	20%	0.052	2600	3600
PSPNAQ4030-4R7M	4.70	20%	0.078	2300	3200
PSPNAQ4030-5R6M	5.60	20%	0.085	2100	2800
PSPNAQ4030-6R8M	6.80	20%	0.11	1700	3000
PSPNAQ4030-100M	10.00	20%	0.13	1600	2400
PSPNAQ4030-120M	12.00	20%	0.17	1400	1800
PSPNAQ4030-150M	15.00	20%	0.24	1200	1800
PSPNAQ4030-180M	18.00	20%	0.26	1200	1500
PSPNAQ4030-220M	22.00	20%	0.29	1200	1400
PSPNAQ4030-330M	33.00	20%	0.42	920	1200
PSPNAQ4030-470M	47.00	20%	0.57	800	1000
PSPNAQ4030-560M	56.00	20%	0.72	710	940
PSPNAQ4030-680M	68.00	20%	1.1	570	800
PSPNAQ4030-750M	75.00	20%	1.3	530	880
PSPNAQ4030-820M	82.00	20%	1.37	520	720
PSPNAQ4030-101M	100.00	20%	1.4	490	730
PSPNAQ4030-121M	120.00	20%	1.7	460	600
PSPNAQ4030-151M	150.00	20%	2.3	350	550
PSPNAQ4030-221M	220.00	20%	3.5	310	500
PSPNAQ4030-331M	330.00	20%	5.5	250	400
PSPNAQ4030-471M	470.00	20%	9.3	230	350
PSPNAQ4030-681M	680.00	20%	9.8	180	200

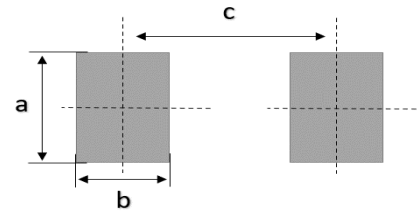


產品編碼 P/N	PSPNAQ201610~1050series	測試設備 TEST INSTRUMENT	Chroma 3302 16502
產品系列 Series	贴片绕线功率电感(NR)	測試頻率 TEST FREQUENCY	100KHZ / 1V

封裝尺寸
Dimension (mm)



焊盤尺寸
Land Pattern



系列 Series	封裝尺寸 Dimension						焊盤尺寸 Land Pattern			MPQ
	A	B	C	D	E	F	a	b	c	盘装
5012	5.0±0.2	5.0±0.2	1.2 MAX	4.0 Ref	1.25 Ref	2.5 Ref	1.4 Typ	4.2 Typ	2.3 Typ	3000pcs
5020	5.0±0.2	5.0±0.2	2.0 MAX	4.0 Ref	1.25 Ref	2.5 Ref	1.4 Typ	4.2 Typ	2.3 Typ	3000pcs

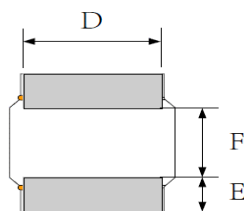
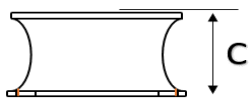
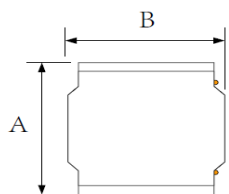
5012~5020

產品編碼 P/N	@ 25 °C Ambient Temperature				
	感值	公差	DCR	溫升電流 (IRMS)	飽和電流 (ISAT)
	Inductance	Tolerance	Ω	mA	mA
	μH	\pm	MAX	$\Delta T \approx 40^\circ\text{C}$	L0 drop $\approx 30\%$
PSPNAQ5012-1R0M	1.00	20%	0.068	2400	4700
PSPNAQ5012-1R5M	1.50	20%	0.086	2200	3800
PSPNAQ5012-2R2M	2.20	20%	0.1	2000	3200
PSPNAQ5012-3R3M	3.30	20%	0.15	1700	2600
PSPNAQ5012-4R7M	4.70	20%	0.19	1500	2300
PSPNAQ5012-6R8M	6.80	20%	0.29	1200	1900
PSPNAQ5012-100M	10.00	20%	0.41	1000	1500
PSPNAQ5012-150M	15.00	20%	0.52	920	1300
PSPNAQ5012-220M	22.00	20%	0.85	680	980
PSPNAQ5020-R47N	0.47	30%	0.017	5000	6700
PSPNAQ5020-R68N	0.68	30%	0.022	4400	6000
PSPNAQ5020-1R0M	1.00	20%	0.026	4100	5000
PSPNAQ5020-1R5M	1.50	20%	0.034	3500	4500
PSPNAQ5020-2R2M	2.20	20%	0.042	3100	4000
PSPNAQ5020-3R3M	3.30	20%	0.056	2700	3000
PSPNAQ5020-4R7M	4.70	20%	0.074	2400	2700
PSPNAQ5020-5R6M	5.60	20%	0.083	2200	2500
PSPNAQ5020-6R8M	6.80	20%	0.1	1900	2200
PSPNAQ5020-100M	10.00	20%	0.14	1700	1800
PSPNAQ5020-150M	15.00	20%	0.21	1300	1400
PSPNAQ5020-220M	22.00	20%	0.29	1200	1200
PSPNAQ5020-330M	33.00	20%	0.5	990	1000
PSPNAQ5020-470M	47.00	20%	0.68	840	840
PSPNAQ5020-680M	68.00	20%	0.96	700	700
PSPNAQ5020-101M	100.00	20%	1.4	580	580
PSPNAQ5020-151M	150.00	20%	1.8	500	500
PSPNAQ5020-201M	200.00	20%	2.6	450	330

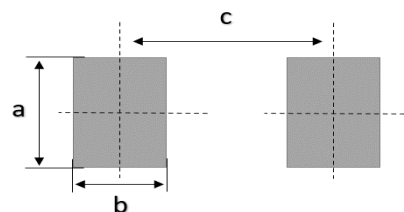


產品編碼 P/N	PSPNAQ201610~1050series	測試設備 TEST INSTRUMENT	Chroma 3302 16502
產品系列 Series	贴片绕线功率电感(NR)	測試頻率 TEST FREQUENCY	100KHZ / 1V

封裝尺寸
Dimension (mm)



焊盤尺寸
Land Pattern



系列 Series	封裝尺寸 Dimension						焊盤尺寸 Land Pattern			MPQ
	A	B	C	D	E	F	a	b	c	盘装
5040	5.0±0.2	5.0±0.2	4.0 Max	4.0 Ref	1.25 Ref	2.5 Ref	4.2 Typ	1.4 Typ	3.7 Typ	1500

5040

產品編碼 P/N	@ 25 °C Ambient Temperture				
	感值	公差	DCR	溫升電流 (IRMS)	飽和電流 (ISAT)
	Inductance	Tolerance	Ω	mA	mA
	μH	±	MAX	ΔT≈40°C	L0 drop≈30%
PSPNAQ5040-1R0M	1.00	20%	0.016	5100	8200
PSPNAQ5040-1R5M	1.50	20%	0.02	4800	7300
PSPNAQ5040-2R2M	2.20	20%	0.025	4300	5500
PSPNAQ5040-3R3M	3.30	20%	0.031	3900	4600
PSPNAQ5040-4R7M	4.70	20%	0.039	3300	3900
PSPNAQ5040-6R8M	6.80	20%	0.056	2800	3500
PSPNAQ5040-8R2M	8.20	20%	0.062	2600	3000
PSPNAQ5040-100M	10.00	20%	0.083	2400	2900
PSPNAQ5040-150M	15.00	20%	0.11	2100	2300
PSPNAQ5040-220M	22.00	20%	0.16	1600	1900
PSPNAQ5040-330M	33.00	20%	0.24	1400	1500
PSPNAQ5040-470M	47.00	20%	0.35	1100	1300
PSPNAQ5040-680M	68.00	20%	0.52	900	1100
PSPNAQ5040-101M	100.00	20%	0.72	800	850
PSPNAQ5040-151M	150.00	20%	0.97	700	670
PSPNAQ5040-221M	220.00	20%	1.8	500	550
PSPNAQ5040-331M	330.00	20%	2.7	500	470
PSPNAQ5040-471M	470.00	20%	3.9	400	430
PSPNAQ5040-561M	560.00	20%	4.9	350	360
PSPNAQ5040-681M	680.00	20%	5	300	350
PSPNAQ5040-102M	1000.00	20%	11	250	300

Page 14 / 26



產品編碼 P/N	PSPNAQ201610~1050series	測試設備 TEST INSTRUMENT	Chroma 3302 16502
產品系列 Series	贴片绕线功率电感(NR)	測試頻率 TEST FREQUENCY	100KHZ / 1V

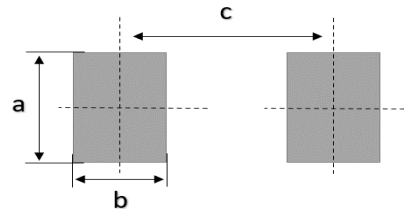
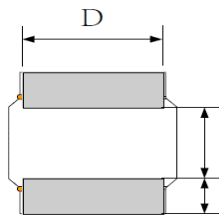
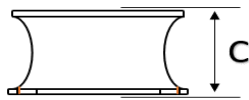
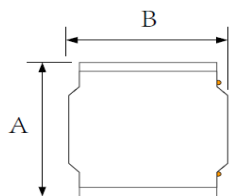
封裝尺寸

Dimension

(mm)

焊盤尺寸

Land Pattern



系列 Series	封裝尺寸 Dimension						焊盤尺寸 Land Pattern			MPQ
	A	B	C	D	E	F	a	b	c	盘装
6012	6.0±0.3	6.0±0.3	1.2 MAX	4.9 Ref	1.55 Ref	2.9 Ref	1.7 Typ	5.7 Typ	2.8 Typ	1000pcs
6020	6.0±0.3	6.0±0.3	2.0 MAX	4.9 Ref	1.55 Ref	2.9 Ref	1.7 Typ	5.7 Typ	2.8 Typ	1000pcs

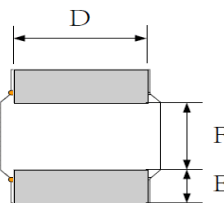
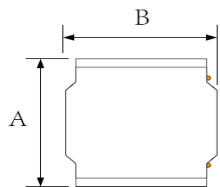
6012~6020

產品編碼 P/N	@ 25 °C Ambient Temperature				
	感值	公差	DCR	溫升電流 (IRMS)	飽和電流 (ISAT)
	Inductance	Tolerance	Ω	mA	mA
	μH	±	MAX	ΔT≈40°C	L0 drop≈30%
PSPNAQ6012-1R0N	1.00	30%	0.055	2300	3600
PSPNAQ6012-1R5N	1.50	30%	0.075	2000	2800
PSPNAQ6012-2R2N	2.20	30%	0.09	1800	2100
PSPNAQ6012-3R3N	3.30	30%	0.1	1700	1800
PSPNAQ6012-4R7M	4.70	20%	0.12	1600	1600
PSPNAQ6012-6R8M	6.80	20%	0.16	1400	1300
PSPNAQ6012-100M	10.00	20%	0.2	1200	1000
PSPNAQ6012-150M	15.00	20%	0.29	800	900
PSPNAQ6012-220M	22.00	20%	0.46	650	800
PSPNAQ6012-330M	33.00	20%	0.58	550	600
PSPNAQ6012-470M	47.00	20%	0.8	460	520
PSPNAQ6012-680M	68.00	20%	1.1	410	440
PSPNAQ6012-101M	100.00	20%	1.6	320	350
<hr/>					
PSPNAQ6020-R68N	0.68	30%	0.022	4800	7800
PSPNAQ6020-1R0M	1.00	20%	0.026	4400	5000
PSPNAQ6020-1R5M	1.50	20%	0.029	4000	5100
PSPNAQ6020-2R2M	2.20	20%	0.036	3500	4500
PSPNAQ6020-3R3M	3.30	20%	0.046	3300	3700
PSPNAQ6020-4R7M	4.70	20%	0.075	2500	3600
PSPNAQ6020-5R6M	5.60	20%	0.075	2400	2900
PSPNAQ6020-6R8M	6.80	20%	0.1	2300	2600
PSPNAQ6020-8R2M	8.20	20%	0.13	1800	2500
PSPNAQ6020-100M	10.00	20%	0.13	1800	2100
PSPNAQ6020-150M	15.00	20%	0.18	1500	1400
PSPNAQ6020-220M	22.00	20%	0.26	1300	1200
PSPNAQ6020-330M	33.00	20%	0.39	1050	1100
PSPNAQ6020-470M	47.00	20%	0.55	900	900

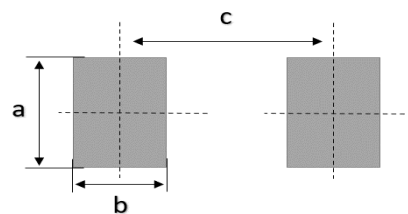


產品編碼 P/N	PSPNAQ201610~1050series	測試設備 TEST INSTRUMENT	Chroma 3302 16502
產品系列 Series	贴片绕线功率电感(NR)	測試頻率 TEST FREQUENCY	100KHZ / 1V

封裝尺寸
Dimension (mm)



焊盤尺寸
Land Pattern



系列 Series	封裝尺寸 Dimension						焊盤尺寸 Land Pattern			MPQ
	A	B	C	D	E	F	a	b	c	盘装
6028	6.0±0.3	6.0±0.3	2.8MAX	4.9 Ref	1.55 Ref	2.9 Ref	1.7 Typ	5.7 Typ	2.8 Typ	2000pcs

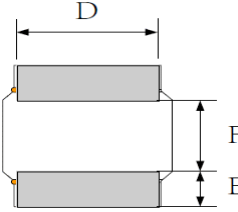
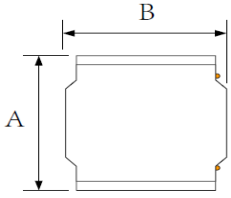
6028

產品編碼 P/N	@ 25 °C Ambient Temperture				
	感值	公差	DCR	溫升電流 (IRMS)	飽和電流 (ISAT)
	Inductance	Tolerance	Ω	mA	mA
	μH	\pm	MAX	$\Delta T \approx 40^\circ\text{C}$	L0 drop $\approx 30\%$
PSPNAQ6028-1R0M	1.00	20%	0.013	5700	7000
PSPNAQ6028-1R5M	1.50	20%	0.017	5000	6600
PSPNAQ6028-2R2M	2.20	20%	0.026	4100	5600
PSPNAQ6028-3R3M	3.30	20%	0.033	3800	4500
PSPNAQ6028-4R7M	4.70	20%	0.039	3400	3300
PSPNAQ6028-5R6M	5.60	20%	0.056	2800	3500
PSPNAQ6028-6R8M	6.80	20%	0.061	2600	3000
PSPNAQ6028-8R2M	8.20	20%	0.072	2500	2500
PSPNAQ6028-100M	10.00	20%	0.094	2400	2500
PSPNAQ6028-120M	12.00	20%	0.1	2000	2000
PSPNAQ6028-150M	15.00	20%	0.16	1600	1900
PSPNAQ6028-180M	18.00	20%	0.15	1600	1800
PSPNAQ6028-220M	22.00	20%	0.18	1600	1800
PSPNAQ6028-270M	27.00	20%	0.2	1400	1600
PSPNAQ6028-330M	33.00	20%	0.24	1300	1500
PSPNAQ6028-390M	39.00	20%	0.29	1200	1400
PSPNAQ6028-470M	47.00	20%	0.4	1100	1300
PSPNAQ6028-560M	56.00	20%	0.44	1000	1200
PSPNAQ6028-680M	68.00	20%	0.46	950	950
PSPNAQ6028-750M	75.00	20%	0.53	900	990
PSPNAQ6028-820M	82.00	20%	0.65	770	880
PSPNAQ6028-101M	100.00	20%	0.65	770	710
PSPNAQ6028-401M	400.00	20%	2.8	400	300
PSPNAQ6028-102M	1000.00	20%	7.5	230	180

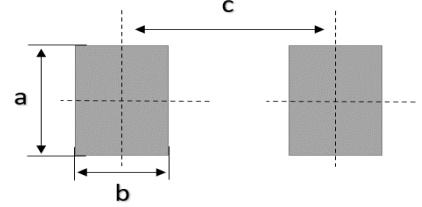


產品編碼 P/N	PSPNAQ201610~1050series	測試設備 TEST INSTRUMENT	Chroma 3302 16502
產品系列 Series	贴片绕线功率电感(NR)	測試頻率 TEST FREQUENCY	100KHZ / 1V

封裝尺寸
Dimension (mm)



焊盤尺寸
Land Pattern



系列 Series	封裝尺寸 Dimension						焊盤尺寸 Land Pattern			MPQ
	A	B	C	D	E	F	a	b	c	盘装
6045	6.0±0.3	6.0±0.3	4.5MAX	4.9 Ref	1.55 Ref	2.9 Ref	1.7 Typ	5.7 Typ	2.8 Typ	2000pcs

6045

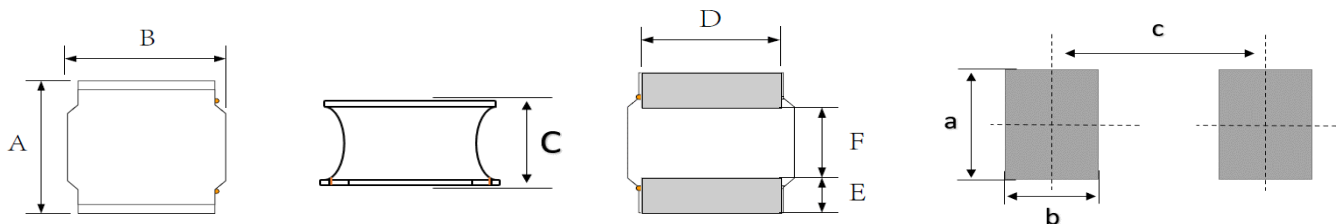
產品編碼 P/N	@ 25 °C Ambient Temperature				
	感值	公差	DCR	溫升電流 (IRMS)	飽和電流 (ISAT)
	Inductance	Tolerance	Ω	mA	mA
	μH	\pm	MAX	$\Delta T \approx 40^\circ\text{C}$	L0 drop $\approx 30\%$
PSPNAQ6045-R82N	0.82	30%	0.01	6500	11000
PSPNAQ6045-1R0N	1	30%	0.014	5600	10000
PSPNAQ6045-1R5N	1.5	30%	0.016	5400	9700
PSPNAQ6045-2R2M	2.2	20%	0.018	5000	7400
PSPNAQ6045-3R3M	3.3	20%	0.027	4000	6200
PSPNAQ6045-4R7M	4.7	20%	0.034	3600	5500
PSPNAQ6045-5R6M	5.6	20%	0.038	3400	4600
PSPNAQ6045-6R8M	6.8	20%	0.04	3300	4300
PSPNAQ6045-8R2M	8.2	20%	0.056	2800	4300
PSPNAQ6045-100M	10	20%	0.062	2700	3500
PSPNAQ6045-120M	12	20%	0.075	2400	3000
PSPNAQ6045-150M	15	20%	0.088	2200	2700
PSPNAQ6045-220M	22	20%	0.11	2000	2200
PSPNAQ6045-330M	33	20%	0.17	1600	1800
PSPNAQ6045-470M	47	20%	0.26	1300	1500
PSPNAQ6045-560M	56	20%	0.28	1200	1400
PSPNAQ6045-680M	68	20%	0.37	1100	1300
PSPNAQ6045-820M	82	20%	0.44	990	1100
PSPNAQ6045-101M	100	20%	0.56	880	1000
PSPNAQ6045-121M	120	20%	0.62	850	940
PSPNAQ6045-151M	150	20%	0.75	770	880
PSPNAQ6045-221M	220	20%	1	650	770
PSPNAQ6045-331M	330	20%	1.6	630	630
PSPNAQ6045-471M	470	20%	2.3	480	560
PSPNAQ6045-681M	680	20%	3.2	380	460
PSPNAQ6045-102M	1000	20%	5.8	300	300
PSPNAQ6045-152M	1500	20%	8.4	210	240
PSPNAQ6045-222M	2200	20%	12	170	200
PSPNAQ6045-302M	3000	20%	19	130	180
PSPNAQ6045-103M	10000	20%	53	70	100



產品編碼 P/N	PSPNAQ201610~1050series	測試設備 TEST INSTRUMENT	Chroma 3302 16502
產品系列 Series	贴片绕线功率电感(NR)	測試頻率 TEST FREQUENCY	100KHZ / 1V

封裝尺寸
Dimension (mm)

焊盤尺寸
Land Pattern



系列 Series	封裝尺寸 Dimension						焊盤尺寸 Land Pattern			MPQ
	A	B	C	D	E	F	a	b	c	盘装
8040	8.0±0.3	8.0±0.3	4.2 MAX	6.3 Ref	2.0 Ref	4.0 Ref	2.2 Typ	7.5 Typ	3.8 Typ	1000pcs

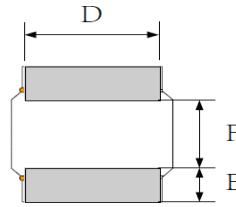
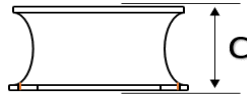
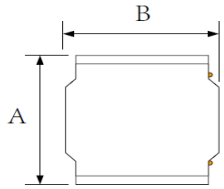
8040

產品編碼 P/N	@ 25 °C Ambient Temperture				
	感值	公差	DCR	溫升電流 (IRMS)	飽和電流 (ISAT)
	Inductance	Tolerance	Ω	mA	mA
	μH	\pm	MAX	$\Delta T \approx 40^\circ\text{C}$	L0 drop $\approx 30\%$
PSPNAQ8040-R82N	0.82	30%	0.01	6900	16000
PSPNAQ8040-1R0N	1.00	30%	0.01	6900	14000
PSPNAQ8040-1R5N	1.50	30%	0.013	6200	11000
PSPNAQ8040-2R2N	2.20	30%	0.016	5600	8000
PSPNAQ8040-3R3M	3.30	20%	0.022	4800	7000
PSPNAQ8040-4R7M	4.70	20%	0.025	4500	6500
PSPNAQ8040-5R6M	5.60	20%	0.027	4200	6900
PSPNAQ8040-6R8M	6.80	20%	0.031	4000	5200
PSPNAQ8040-8R2M	8.20	20%	0.034	3800	4800
PSPNAQ8040-100M	10.00	20%	0.038	3600	4100
PSPNAQ8040-150M	15.00	20%	0.06	2800	3400
PSPNAQ8040-220M	22.00	20%	0.09	2300	2700
PSPNAQ8040-330M	33.00	20%	0.12	2000	2400
PSPNAQ8040-470M	47.00	20%	0.17	1700	2000
PSPNAQ8040-560M	56.00	20%	0.19	1600	1700
PSPNAQ8040-680M	68.00	20%	0.25	1400	1600
PSPNAQ8040-101M	100.00	20%	0.37	1100	1300
PSPNAQ8040-121M	120.00	20%	0.43	1000	1100
PSPNAQ8040-151M	150.00	20%	0.53	940	1200
PSPNAQ8040-221M	220.00	20%	0.77	880	940
PSPNAQ8040-331M	330.00	20%	1.1	700	750
PSPNAQ8040-471M	470.00	20%	1.6	600	700
PSPNAQ8040-681M	680.00	20%	2.8	600	680
PSPNAQ8040-821M	820.00	20%	3.4	550	550
PSPNAQ8040-102M	1000.00	20%	3.6	500	500

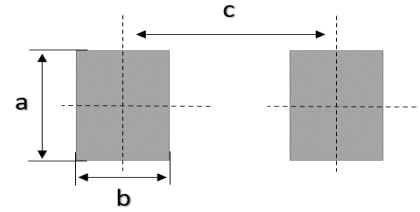


產品編碼 P/N	PSPNAQ201610~1050series	測試設備 TEST INSTRUMENT	Chroma 3302 16502
產品系列 Series	贴片绕线功率电感(NR)	測試頻率 TEST FREQUENCY	100KHZ / 1V

封裝尺寸
Dimension (mm)



焊盤尺寸
Land Pattern



系列 Series	封裝尺寸 Dimension						焊盤尺寸 Land Pattern			MPQ
	A	B	C	D	E	F	a	b	c	盘装
8060	8.0±0.3	8.0±0.3	6.0 MAX	6.3 Ref	2.0 Ref	4.0 Ref	2.2 Typ	7.5 Typ	3.8 Typ	1000pcs

8060

產品編碼 P/N	@ 25 °C Ambient Temperture				
	感值	公差	DCR	溫升電流 (IRMS)	飽和電流 (ISAT)
	Inductance	Tolerance	Ω	mA	mA
	μH	\pm	MAX	$\Delta T \approx 40^\circ\text{C}$	L0 drop $\approx 30\%$
PSPNAQ8060-2R2M	2.20	20%	0.028	6500	8000
PSPNAQ8060-3R3M	3.30	20%	0.032	6000	7500
PSPNAQ8060-4R7M	4.70	20%	0.04	5600	7000
PSPNAQ8060-6R0M	6.00	20%	0.044	4800	6000
PSPNAQ8060-6R8M	6.80	20%	0.048	4700	5900
PSPNAQ8060-100M	10.00	20%	0.054	4600	5800
PSPNAQ8060-150M	15.00	20%	0.092	3600	4500
PSPNAQ8060-220M	22.00	20%	0.13	3400	4300
PSPNAQ8060-330M	33.00	20%	0.21	2400	3000
PSPNAQ8060-470M	47.00	20%	0.24	2280	2850
PSPNAQ8060-680M	68.00	20%	0.32	2000	2500
PSPNAQ8060-101M	100.00	20%	0.49	1600	2000
PSPNAQ8060-151M	150.00	20%	0.74	1320	1650
PSPNAQ8060-681M	680.00	20%	3.6	620	800
PSPNAQ8060-821M	820.00	20%	4.4	550	700
PSPNAQ8060-102M	1000.00	20%	5	450	600

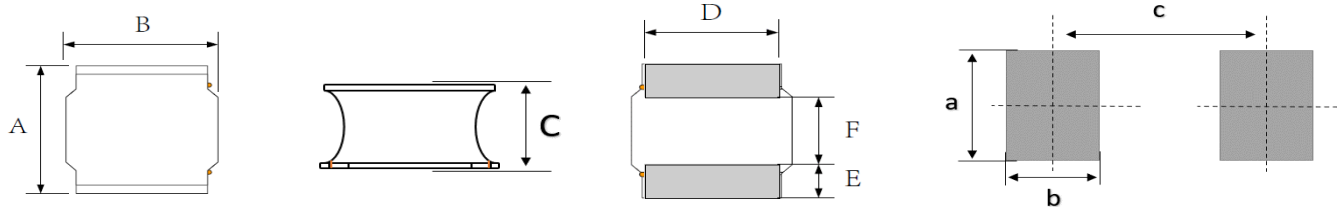
Page 19 / 26



產品編碼 P/N	PSPNAQ201610~1050series	測試設備 TEST INSTRUMENT	Chroma 3302 16502
產品系列 Series	贴片绕线功率电感(NR)	測試頻率 TEST FREQUENCY	100KHZ / 1V

封裝尺寸
Dimension (mm)

焊盤尺寸
Land Pattern



系列 Series	封裝尺寸 Dimension						焊盤尺寸 Land Pattern			MPQ
	A	B	C	D	E	F	a	b	c	盘装
8065	8.0±0.3	8.0±0.3	6.5 MAX	6.3 Ref	2.0 Ref	4.0 Ref	2.2 Typ	7.5 Typ	3.8 Typ	800pcs

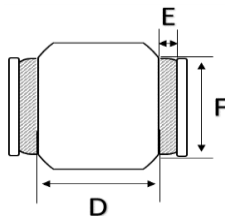
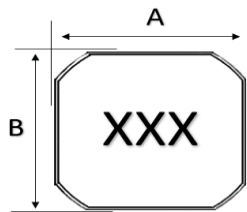
8065

產品編碼 P/N	@ 25 °C Ambient Temperture				
	感值	公差	DCR	溫升電流 (IRMS)	飽和電流 (ISAT)
	Inductance	Tolerance	Ω	mA	mA
	μH	\pm	MAX	$\Delta T \approx 40^\circ\text{C}$	L0 drop $\approx 30\%$
PSPNAQ8065-1R0M	1.00	20%	0.011	8000	15000
PSPNAQ8065-1R5M	1.50	20%	0.013	7000	13000
PSPNAQ8065-2R2M	2.20	20%	0.016	6500	12000
PSPNAQ8065-3R3M	3.30	20%	0.018	6000	10000
PSPNAQ8065-4R7M	4.70	20%	0.022	5400	9500
PSPNAQ8065-6R8M	6.80	20%	0.026	5200	8000
PSPNAQ8065-100M	10.00	20%	0.044	4000	8900
PSPNAQ8065-150M	15.00	20%	0.064	3700	6000
PSPNAQ8065-220M	22.00	20%	0.072	3500	4800
PSPNAQ8065-330M	33.00	20%	0.11	2800	4000
PSPNAQ8065-470M	47.00	20%	0.16	2300	3000
PSPNAQ8065-680M	68.00	20%	0.21	1800	2600
PSPNAQ8065-101M	100.00	20%	0.28	1500	2500
PSPNAQ8065-151M	150.00	20%	0.44	1100	2000
PSPNAQ8065-221M	220.00	20%	0.65	1000	1500
PSPNAQ8065-331M	330.00	20%	0.84	850	1200
PSPNAQ8065-471M	470.00	20%	1.2	700	1000
PSPNAQ8065-681M	680.00	20%	2.2	600	800
PSPNAQ8065-102M	1000.00	20%	3.7	420	650
PSPNAQ8065-152M	1500.00	20%	4.6	320	500
PSPNAQ8065-222M	2200.00	20%	10	280	400
PSPNAQ8065-332M	3300.00	20%	17	240	300
PSPNAQ8065-472M	4700.00	20%	24	200	250
PSPNAQ8065-682M	6800.00	20%	30	150	200
PSPNAQ8065-103M	10000.00	20%	35	110	170

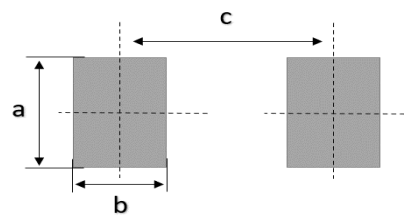


產品編碼 P/N	PSPNAQ201610~1050series	測試設備 TEST INSTRUMENT	Chroma 3302 16502
產品系列 Series	贴片绕线功率电感(NR)	測試頻率 TEST FREQUENCY	100KHZ / 1V

封裝尺寸
Dimension (mm)



焊盤尺寸
Land Pattern



系列 Series	封裝尺寸 Dimension						焊盤尺寸 Land Pattern			MPQ
	A	B	C	D	E	F	a	b	c	盘装
1050	10.0±0.3	10.0±0.3	5.0 Max.	6.3 Ref	2.0 Ref	6.3 Ref	7 Typ	2.5 Typ	8.6 Typ	800pcs

1050

產品編碼 P/N	@ 25 °C Ambient Temperture				
	感值	公差	DCR	溫升電流 (IRMS)	飽和電流 (ISAT)
	Inductance	Tolerance	Ω	mA	mA
	μH	\pm	MAX	$\Delta T \approx 40^\circ\text{C}$	L0 drop $\approx 30\%$
PSPNAQ1050-1R0N	1	30%	0.01	10000	18000
PSPNAQ1050-1R5N	1.5	30%	0.015	8500	16000
PSPNAQ1050-2R2N	2.2	30%	0.02	7500	13000
PSPNAQ1050-3R3N	3.3	30%	0.026	6000	12000
PSPNAQ1050-4R7N	4.7	30%	0.03	5000	11000
PSPNAQ1050-5R6N	5.6	30%	0.034	4700	10000
PSPNAQ1050-6R8M	6.8	20%	0.037	4500	9000
PSPNAQ1050-8R2M	8.2	20%	0.043	4200	8000
PSPNAQ1050-100M	10	20%	0.048	4000	7500
PSPNAQ1050-150M	15	20%	0.059	3500	6000
PSPNAQ1050-220M	22	20%	0.085	3000	4500
PSPNAQ1050-330M	33	20%	0.1	2500	4000
PSPNAQ1050-470M	47	20%	0.16	2200	3500
PSPNAQ1050-680M	68	20%	0.23	2000	3000
PSPNAQ1050-101M	100	20%	0.33	1500	2500
PSPNAQ1050-151M	150	20%	0.43	1200	2000
PSPNAQ1050-221M	220	20%	0.67	1000	1800
PSPNAQ1050-331M	330	20%	1	900	1500
PSPNAQ1050-471M	470	20%	1.4	800	1200
PSPNAQ1050-561M	560	20%	1.7	750	1100
PSPNAQ1050-681M	680	20%	1.9	700	1000
PSPNAQ1050-821M	820	20%	2.7	650	900
PSPNAQ1050-102M	1000	20%	3.4	600	800
PSPNAQ1050-152M	1500	20%	3.9	550	700
PSPNAQ1050-222M	2200	20%	5.5	500	600

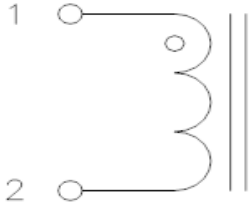


特性 CHARACTERISTICS



產品編碼 P/N	PSPNAQ201610~1050series	測試設備 TEST INSTRUMENT	Chroma 3302 16502
產品系列 Series	贴片绕线功率电感(NR)	測試頻率 TEST FREQUENCY	100KHZ / 1V

电路图 Schematic



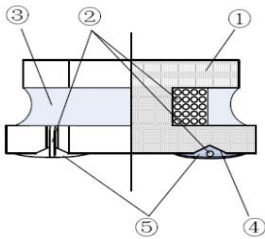
- ◎ 電感內置一組線圈
Inductor Contents one (1) Set(s) of Coil

印字方式 Marking



- ◎ 噴碼顏色：黑色
Mark color: black
- ◎ 尺寸3x3mm及以下頂部不噴碼標識
Size 3x3mm and below the top is not mark

內部構造 Internal Structure

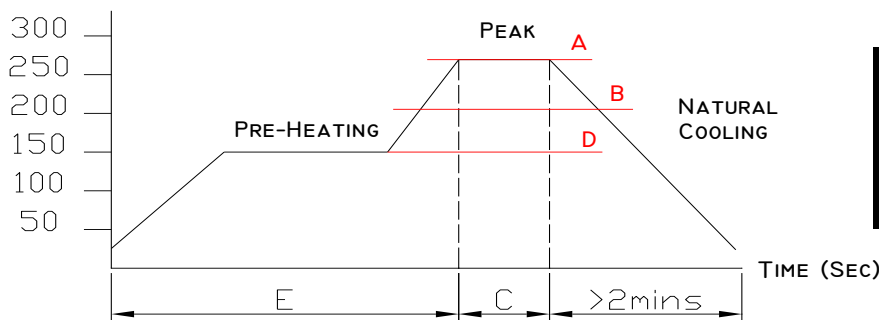


項目 Item	結構名稱 Patr Name	材料名稱 Material Name
①	磁芯/Core	铁氧体磁芯/Ni-Zn Ferrite
②	铜线Wire	漆包线/polyurethane enameled copper wire
③	磁胶/agenteic Glue	环氧树脂+磁粉/epoxy resin and magnetic powder
④	镀层/plating	银+镍+锡/Ag-Ni-Sn
⑤	电极/Terminal Electrode	锡+银+铜/Sn-Ag-Cu

焊接溫度（推荐）

Recommended Soldering Temperature Graph

TEMPERATURE (°C)



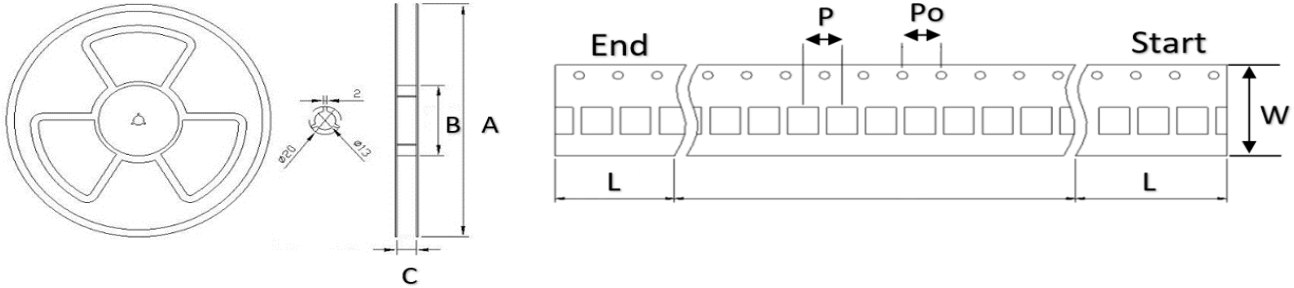
A	260°C
B	230°C
C	10 Sec
D	150°C
E	60~240 Sec



產品編碼 P/N	PSPNAQ201610~1050series	測試設備 TEST INSTRUMENT	Chroma 3302 16502
產品系列 Series	贴片绕线功率电感(NR)	測試頻率 TEST FREQUENCY	100KHZ / 1V

載帶卷盤尺寸 : (mm)

Packing Dimension



系列 Series	A	B	C	W	P	Po	L
201610	178	58 Typ	8.5 Typ	8.0 Typ	4.0 Typ	4.0 Typ	載帶前後大約預留30空格
252010	178	58 Typ	8.5 Typ	8.0 Typ	4.0 Typ	4.0 Typ	載帶前後大約預留30空格
252012	178	58 Typ	8.5 Typ	8.0 Typ	4.0 Typ	4.0 Typ	載帶前後大約預留30空格
3010	178	58 Typ	8.5 Typ	8.0 Typ	4.0 Typ	4.0 Typ	載帶前後大約預留30空格
3012	178	58 Typ	8.5 Typ	8.0 Typ	4.0 Typ	4.0 Typ	載帶前後大約預留30空格
3015	178	58 Typ	8.5 Typ	8.0 Typ	4.0 Typ	4.0 Typ	載帶前後大約預留30空格
4010	178	58 Typ	8.5 Typ	8.0 Typ	4.0 Typ	4.0 Typ	載帶前後大約預留30空格
4012	330	100 Typ	12.5 Typ	12 Typ	8.0 Typ	4.0 Typ	載帶前後大約預留30空格
4018	330	100 Typ	12.5 Typ	12 Typ	8.0 Typ	4.0 Typ	載帶前後大約預留30空格
4020	330	100 Typ	12.5 Typ	12 Typ	8.0 Typ	4.0 Typ	載帶前後大約預留30空格
4026	330	100 Typ	12.5 Typ	12 Typ	8.0 Typ	4.0 Typ	載帶前後大約預留30空格
4030	330	100 Typ	12.5 Typ	12 Typ	8.0 Typ	4.0 Typ	載帶前後大約預留30空格
5012	330	100 Typ	12.5 Typ	12 Typ	8.0 Typ	4.0 Typ	載帶前後大約預留30空格
5020	330	100 Typ	12.5 Typ	12 Typ	8.0 Typ	4.0 Typ	載帶前後大約預留30空格
5040	330	100 Typ	12.5 Typ	12 Typ	8.0 Typ	4.0 Typ	載帶前後大約預留30空格
6012	330	100 Typ	16.5 Typ	16 Typ	8.0 Typ	4.0 Typ	載帶前後大約預留30空格
6020	330	100 Typ	16.5 Typ	16 Typ	8.0 Typ	4.0 Typ	載帶前後大約預留30空格
6028	330	100 Typ	16.5 Typ	16 Typ	8.0 Typ	4.0 Typ	載帶前後大約預留30空格
6045	330	100 Typ	16.5 Typ	16 Typ	8.0 Typ	4.0 Typ	載帶前後大約預留30空格
8040	330	100 Typ	16.5 Typ	16 Typ	12 Typ	4.0 Typ	載帶前後大約預留30空格
8060	330	100 Typ	16.5 Typ	16 Typ	12 Typ	4.0 Typ	載帶前後大約預留30空格
8065	330	100 Typ	16.5 Typ	16 Typ	12 Typ	4.0 Typ	載帶前後大約預留30空格
1050	330	100 Typ	24.5 Typ	24 Typ	16 Typ	4.0 Typ	載帶前後大約預留30空格



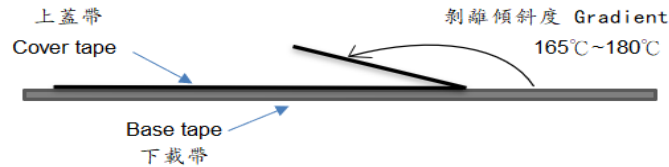
產品編碼 P/N	PSPNAQ201610~1050series	測試設備 TEST INSTRUMENT	Chroma 3302 16502
產品系列 Series	贴片绕线功率电感(NR)	測試頻率 TEST FREQUENCY	100KHZ / 1V

載帶剝離力:

Typical Pulling Force

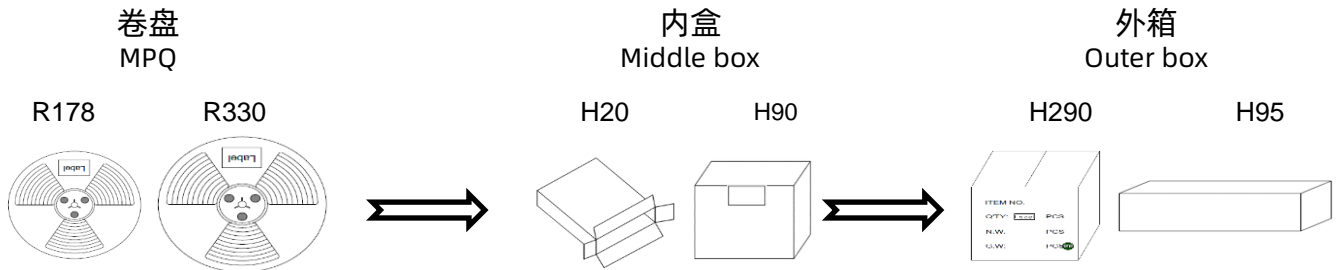
對上蓋帶施加力: 20g~120g內即可與下載帶剝離

Tape Peeling off force: 20g~120g



裝箱數量:

Package Quantity



系列 Series	卷盤 MPQ		內盒 Middle box		外箱 Outer box	
	規格	數量	規格	數量	規格	數量
201610	R178	2000pcs	H90	10000pcs	H95	50000pcs
252010	R178	2000pcs	H90	10000pcs	H95	50000pcs
252012	R178	2000pcs	H90	10000pcs	H95	50000pcs
3010	R178	2000pcs	H90	10000pcs	H95	50000pcs
3012	R178	2000pcs	H90	10000pcs	H95	50000pcs
3015	R178	2000pcs	H90	10000pcs	H95	50000pcs
4010	R178	1000pcs	H90	5000pcs	H95	25000pcs
4012	R330	4500pcs	H20	13500pcs	H290	40500pcs
4018	R330	3000pcs	H20	9000pcs	H290	27000pcs
4020	R330	3000pcs	H20	9000pcs	H290	27000pcs
4026	R330	3000pcs	H20	9000pcs	H290	27000pcs
4030	R330	2000pcs	H20	6000pcs	H290	18000pcs
5012	R330	3000pcs	H20	9000pcs	H290	27000pcs
5020	R330	3000pcs	H20	9000pcs	H290	27000pcs
5040	R330	1500pcs	H20	4500pcs	H290	13500pcs
6012	R330	1000pcs	H20	3000pcs	H290	9000pcs
6020	R330	1000pcs	H20	3000pcs	H290	9000pcs
6028	R330	2000pcs	H20	6000pcs	H290	18000pcs
6045	R330	2000pcs	H20	6000pcs	H290	18000pcs
8040	R330	1000pcs	H20	2000pcs	H290	6000pcs
8060	R330	1000pcs	H20	2000pcs	H290	6000pcs
8065	R330	800pcs	H20	1600pcs	H290	4800pcs
1050	R330	800pcs	H20	1600pcs	H290	4800pcs





注意事項

使用本產品時，請注意以下事項

- ◎ 產品保存期限為12個月，保存條件：溫度5~40℃，濕度10~75%RH以內，超過保存期限可能會使產品端子電極發生氧化。
- ◎ 請勿在極端環境下使用和保存（高鹽，強酸，強鹼，強輻射等）。
- ◎ 產品焊接前，請進行預熱；預熱溫度與焊接溫度之間溫差建議控制在150℃以內。
- ◎ 產品焊接後需重新拆卸焊接修正時，請遵循規格書規定的條件範圍；過高的加熱溫度以及反復的拆卸可能會導致產品失效。
- ◎ 產品請勿接觸清洗劑，酒精等液體，這會侵蝕產品本體，從而導致產品失效。
- ◎ 產品焊接到線路板後，請注意不可因線路板整體變形或局部變形而施加給電感剩餘應力，這可能會導致電感發生破裂，脫落，以致失效。
- ◎ 產品通電後溫度會隨電流的增大而上升，設計時請務必考慮留有餘量。
- ◎ 過高的靜電會對產品產生永久性損害，請注意靜電防護。
- ◎ 產品通電過程請勿觸摸產品任何部位，防止觸電。
- ◎ 本產品作為磁性產品，設計時請務必考慮周邊元器件與本產品可能產生的相互影響。
- ◎ 本產品適用於一般電子設備，如：AV設備，通信設備，家電產品，娛樂設備，電腦設備，個人設備，辦公設備，計測設備，工業機器人等。且該一般電子設備需在常規的操作和使用方法環境下使用。對於需要高度安全性和可靠性的，或者因本產品失效造成設備故障，誤操作，運轉不良等危及到人的生命身體及財產安全，以及對社會產生較大不良影響的特殊用途，設計使用前務必同本公司溝通，設計使用者如未取得我司書面同意狀況下使用造成任何後果，我司不予承擔。特殊用途包含但不限定如下清單：
 - 1 軍用設備
 - 2 運輸設備（汽車，軌道交通產品，船舶等）
 - 3 航空，航太設備
 - 4 發電控制設備
 - 5 核動力相關設備
 - 6 爆炸引燃控制設備
 - 7 交通控制設備
 - 8 關係到國防安全的設備
 - 9 其他被認定為特殊用途的設備





ANNOUNCEMENTS

Please read this before using the product.

- © The product storage life is 12 months, Storage Temperature: TEMP.5~40°C; RH10%~75%. Please use the product within the warranty period
- © Do not use or store in locations where there are conditions such as gas corrosion (salt, acid, alkali, radiation etc.) .
- © Before soldering, be sure to preheat components:The preheating temperature should be set so that The temperature difference between the solder temperature and chip temperature does not exceed 150° C.
- © Soldering corrections after mounting should be within the range of the conditions determined in the specifications. If overheated, a short circuit, performance deterioration, or lifespan shortening may occur. Repeated disassembly may invalidate the inductance
- © The cleaning agent can not be used for these products. This may corrode the inductor
- © When embedding a printed circuit board where a chip is mounted to a set, be sure that residual stress is not given to the chip due to the overall distortion of the printed circuit board and partial distortion such as at screw tightening portions.
- © Self heating (Rated Current or Irms) occurs when the power is turned ON, so the tolerance should be sufficient for the set thermal design.
- © Too high static electricity will cause permanent damage to the product, please pay attention to electrostatic protection.
- © As a magnetic product, the design must consider the possible interaction between peripheral components and the product.
- © The products listed on this catalog are intended for use in general electronic equipment (AV equipment, telecommunications equipment, home appliances, amusement equipment, computer equipment, personal equipment, office equipment, measurement equipment, industrial robots) under a normal operation and use condition.
The products are not designed or warranted to meet the requirements of the applications listed below, whose performance and/or quality require a more stringent level of safety or reliability, or whose failure, malfunction or trouble could cause serious damage to society, person or property.
If you intend to use the products in the applications listed below or if you have special requirements exceeding the range or conditions set forth in the each catalog, please contact PROD. Otherwise, PROD will not bear the serious consequences caused by product quality problems

- | | |
|--|---|
| 1 Military equipment | 8 Medical equipment |
| 2 Transportation equipment (cars, trains, ships, etc.) | 9 Other applications that are not considered general-purpose applications |
| 3 Aerospace/aviation equipment | |
| 4 Power-generation control equipment | |
| 5 Atomic energy-related equipment | |
| 6 Explosive ignition control equipment | |
| 7 Transportation control equipment | |



X-ON Electronics

Largest Supplier of Electrical and Electronic Components

Click to view similar products for [Fixed Inductors](#) category:

Click to view products by [PROD Technology](#) manufacturer:

Other Similar products are found below :

[CR32NP-151KC](#) [CR32NP-180KC](#) [CR32NP-181KC](#) [CR32NP-1R5MC](#) [CR32NP-390KC](#) [CR32NP-3R9MC](#) [CR32NP-680KC](#) [CR32NP-820KC](#) [CR32NP-8R2MC](#) [CR43NP-390KC](#) [CR43NP-560KC](#) [CR43NP-680KC](#) [CR54NP-181KC](#) [CR54NP-470LC](#) [CR54NP-820KC](#) [CR54NP-8R5MC](#) [70F224AI](#) [MGDQ4-00004-P](#) [MHL1ECTTP18NJ](#) [MHQ1005P10NJ](#) [MHQ1005P1N0S](#) [MHQ1005P2N4S](#) [MHQ1005P3N6S](#) [MHQ1005P5N1S](#) [MHQ1005P8N2J](#) [PE-51506NL](#) [PE-53601NL](#) [PE-53602NL](#) [PE-53630NL](#) [PE-53824SNLT](#) [PE-92100NL](#) [PG0434.801NLT](#) [PG0936.113NLT](#) [9220-20](#) [9310-16](#) [PM06-2N7](#) [PM06-39NJ](#) [A01TK](#) [1206CS-471XJ](#) [HC2LP-R47-R](#) [HC2-R47-R](#) [HC3-2R2-R](#) [HCF1305-3R3-R](#) [1206CS-151XG](#) [RCH664NP-140L](#) [RCH664NP-4R7M](#) [RCH8011NP-221L](#) [RCP1317NP-332L](#) [RCP1317NP-391L](#) [RCR1010NP-470M](#)