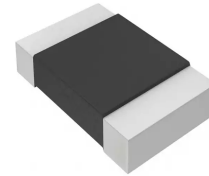
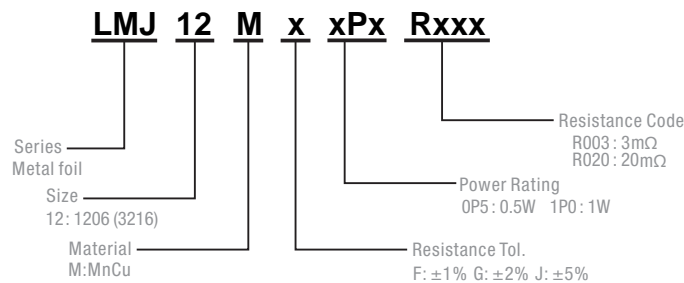


Description

- Proprietary processing technique produces extremely low resistance values
- Very low inductance
- Low thermal EMF
- Metallic Material

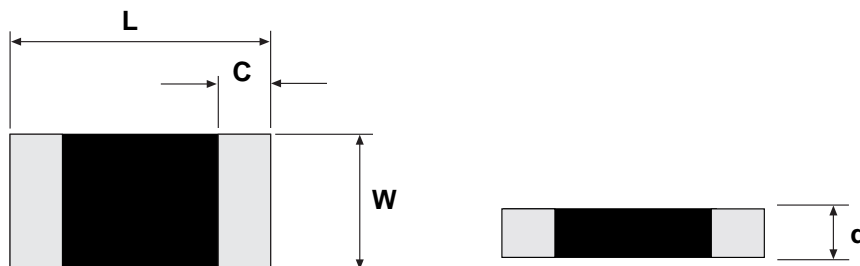


Part Numbering System



Parameter	Standard
Power Rating	0.5~1W
Resistance Value	1~30mΩ
Operating Temperature Range	-55 to +170°C
Component Temperature Coefficient (TCR)	± 50 ppm/°C
Maximum Working Voltage (V)	$(P \times R)^{1/2}$

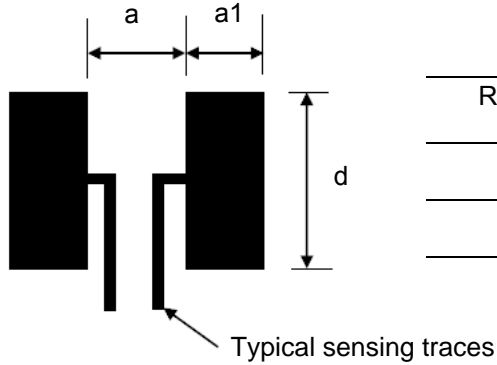
Dimensions



Unit: Millimeters

Style	L	W	C	d
LMJ 12	3.2±0.2	1.6±0.2	1.1±0.3 (1mΩ)	0.75±0.2
			0.5±0.3 (2~30mΩ)	

Recommended land pattern



Unit: Millimeters

Resistance Range (Ω)	a	a1	d
0.001	1.0	2.3	1.8
0.002~0.030	1.6	1.7	1.8

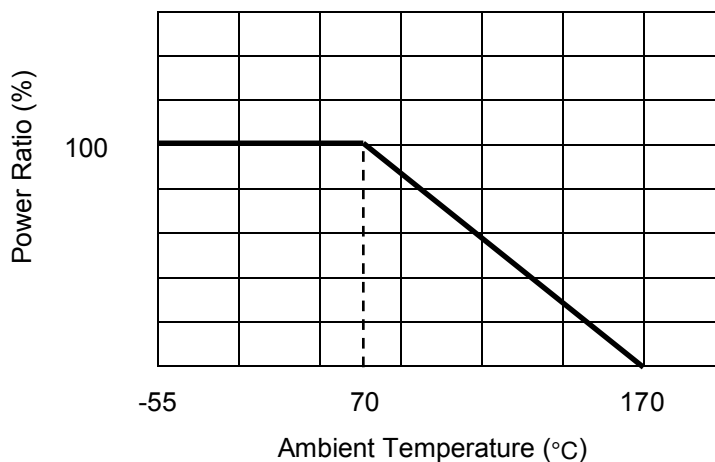
Packaging

Quantity: 5, 000pcs
8mm wide tape on 178mm(7 inch)
diameter reel -specification EIA
Standard 481.

Performance

Test Items	Conditions of Test	Test Limits
Thermal shock	- 55 °C to + 150 °C, 300 cycles, 15 min at each extreme	$\pm 1.0 \%$
Short time overload	5 x rated power for 5 s	$\pm 0.5 \%$
Low temperature operation	- 55 °C, 1000 h	$\pm 0.5 \%$
High temperature exposure	1000h at + 170 °C	$\pm 1.0 \%$
Moisture resistance	MIL-STD- 202, method 106, 0 % power, 7b not required	$\pm 1.0 \%$
Load life	1000 h at 70 °C , 1.5 h "ON", 0.5 h "OFF"	$\pm 1.0 \%$
Resistance to bonding exposure	260 °C for 10 s	$\pm 0.5 \%$

Derating Curve



X-ON Electronics

Largest Supplier of Electrical and Electronic Components

Click to view similar products for [Thick Film Resistors - SMD category](#):

Click to view products by [PROSEMI manufacturer](#):

Other Similar products are found below :

[CR-05FL7--150R](#) [CR-05FL7--19K6](#) [CR-05FL7--243R](#) [CR-05FL7--40K2](#) [CR-05FL7--698K](#) [CR-12FP4--324R](#) [CR-12JP4--680R](#)
[M55342K06B1E78RS3](#) [M55342K06B6E19RWL](#) [M55342K06B6E81RS3](#) [M55342M05B200DRWB](#) [M55342M06B4K70MS3](#) [MC0603-511-](#)
[JTW](#) [742C083750JTR](#) [MCR01MZPF1202](#) [MCR01MZPF1601](#) [MCR01MZPF1800](#) [MCR01MZPF6201](#) [MCR01MZPF9102](#) [MCR01MZPJ113](#)
[MCR01MZPJ121](#) [MCR01MZPJ125](#) [MCR01MZPJ751](#) [MCR03EZHJ103](#) [MCR03EZPFX2004](#) [MCR03EZPJ270](#) [MCR03EZPJ821](#)
[MCR10EZPF1102](#) [MCR18EZPJ330](#) [RC0603F1473CS](#) [RC0603F150CS](#) [RC1005F1152CS](#) [RC1005F1182CS](#) [RC1005F1372CS](#)
[RC1005F183CS](#) [RC1005F1911CS](#) [RC1005F1912CS](#) [RC1005F203CS](#) [RC1005F2052CS](#) [RC1005F241CS](#) [RC1005F2431CS](#)
[RC1005F3011CS](#) [RC1005F303CS](#) [RC1005F4321CS](#) [RC1005F4642CS](#) [RC1005F471CS](#) [RC1005F4751CS](#) [RC1005F5621CS](#)
[RC1005F6041CS](#) [RC1005J106CS](#)