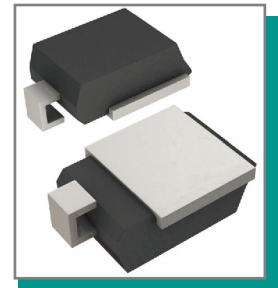


Features

- 6600 watts Peak Pulse Power (10/1000μs)
- Available in uni-directional polarity only
- Junction passivation optimized design passivated anisotropic rectifier technology
- Low leakage current
- Low forward voltage drop
- High surge capability
- Meets ISO7637-2 surge specification (varied by test condition)



DO-218AB

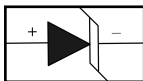


Mechanical Characteristics

- JEDEC DO-218AB package
- Molding compound flammability rating: UL 94V-0
- Marking: Marking Code
- Heatsink is anode

Applications

- Use in sensitive electronics protection against voltage transients induced by inductive load switching and lighting, especially for automotive load dump protection application.



Schematic & PIN Configuration

Absolute Maximum Rating			
Rating	Symbol	Value	Units
Peak Pulse Power (tp =10/1000μs) (see Note1,2&3)	P _{PPM}	6600	Watts
Peak pulse current (10/1000μs) (see Note2&3)	I _{PPM}	See Electrical Characteristics	A
Peak forward surge current (see Note4&5)	I _{FSM}	700	A
Power dissipation on infinite heat sink T _A = 25 °C (Fig5)	P _D	8	W
Operating junction temperature range	T _J	-55 to + 175	°C
Storage temperature range	T _{STG}	-55 to + 175	°C

Note1: Peak Pulse Power Rating as Pulse Width ,per Fig1.

Note2: Peak Pulse Power or Current Derated above T_A=25°C Per Fig. 2 and Non-Repetitive Current Pulse,Per Fig6.

Note3: Mounted on 5.0x5.0mm² copper pad to each terminal.

Note4: 8.3ms Single Half Sine Wave or Equivalent Square Wave.

Note5: Maximum Forward Surge Current per Fig6.

Electrical Characteristics

Part Number	Reverse Standoff Voltage V _{RWM} (Volts)	Breakdown Voltage V _{BR} (Volts)@I _T		Test Current I _T (mA)	Maximum Clamping Voltage V _c @I _{PP} (Volts)	Maximum Peak Pulse Current I _{pp} (Amps)	Maximum Reverse Leakage I _R @V _{RWM} (μA)
		MIN	MAX				
SM8S10A	10	11.1	12.3	5	17.0	388	15
SM8S11A	11	12.2	13.5	5	18.2	363	10
SM8S12A	12	13.3	14.7	5	19.9	332	10
SM8S13A	13	14.4	15.9	5	21.5	307	10
SM8S14A	14	15.6	17.2	5	23.2	284	10
SM8S15A	15	16.7	18.5	5	24.4	270	10
SM8S16A	16	17.8	19.7	5	26.0	254	10
SM8S17A	17	18.9	20.9	5	27.6	239	10
SM8S18A	18	20.0	22.1	5	29.2	226	10
SM8S20A	20	22.2	24.5	5	32.4	204	10
SM8S22A	22	24.4	26.9	5	35.5	186	10
SM8S24A	24	26.7	29.5	5	38.9	170	10
SM8S26A	26	28.9	31.9	5	42.1	157	10
SM8S28A	28	31.1	34.4	5	45.4	145	10
SM8S30A	30	33.3	36.8	5	48.4	136	10
SM8S33A	33	36.7	40.6	5	53.3	124	10
SM8S36A	36	40.0	44.2	5	58.1	114	10
SM8S40A	40	44.4	49.1	5	64.5	102	10
SM8S43A	43	47.8	52.8	5	69.4	95.1	10

Typical Characteristics

Figure 1: Peak Pulse Power Rating Curve

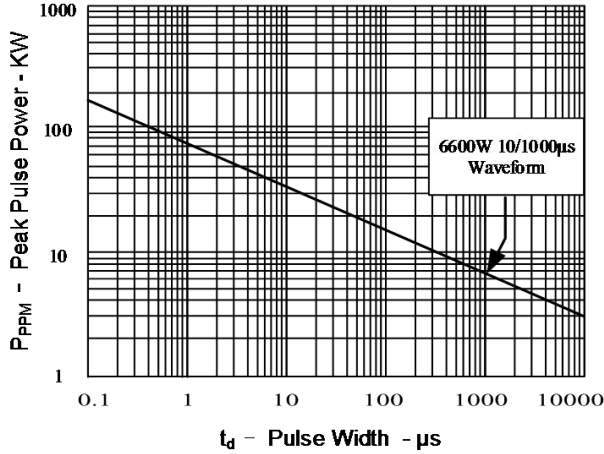


Figure 2: Pulse Derating Curve

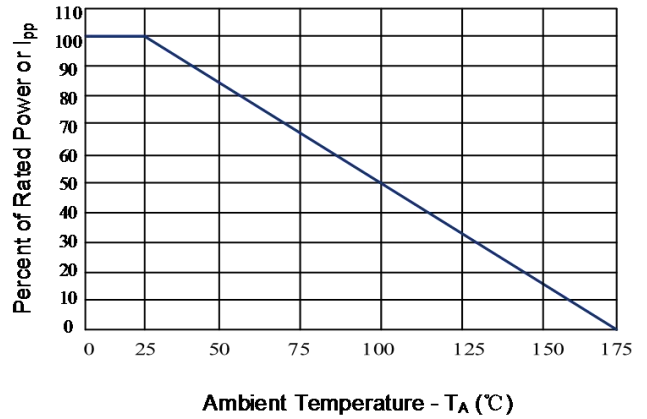


Figure 3: Pulse Waveform

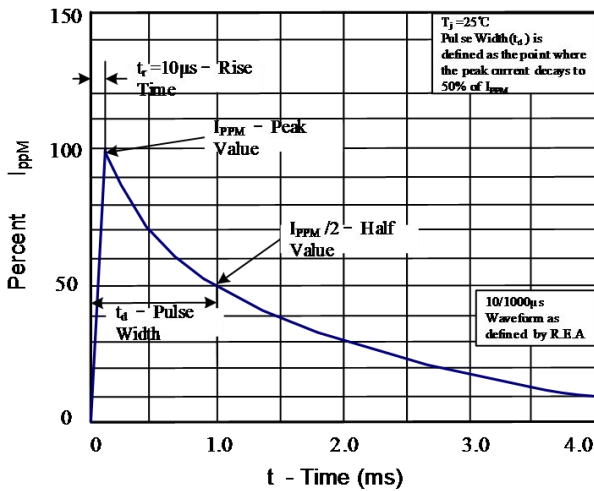


Figure 4: Typical Junction Capacitance

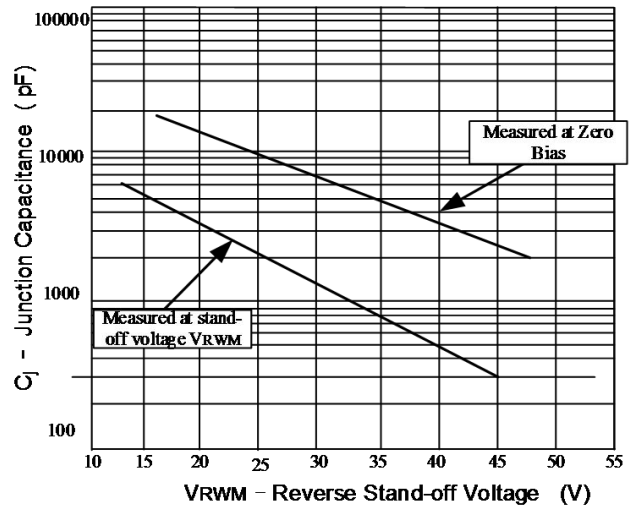


Figure 5: Steady State Power Dissipation Derating Curve

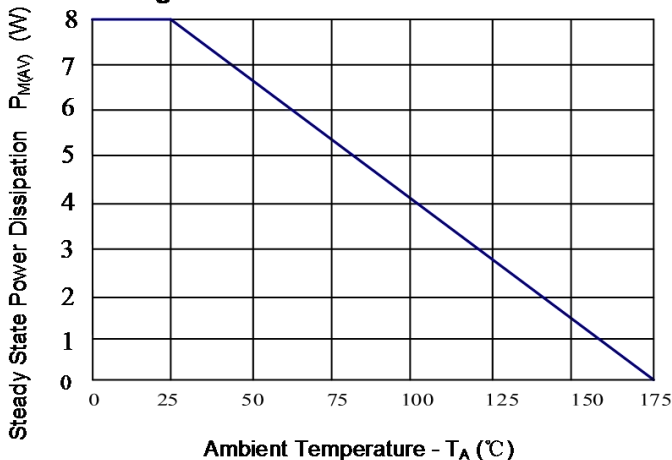
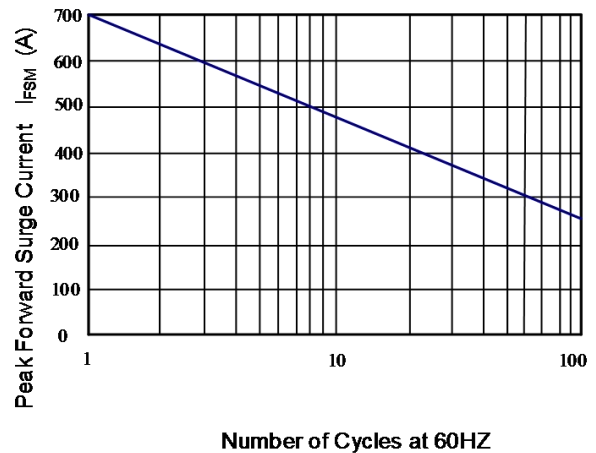
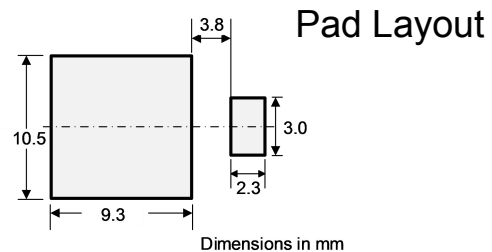
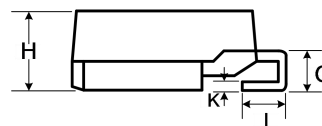
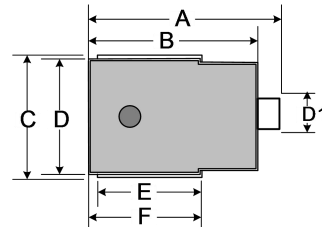


Figure 6: Maximum Non-Repetitive

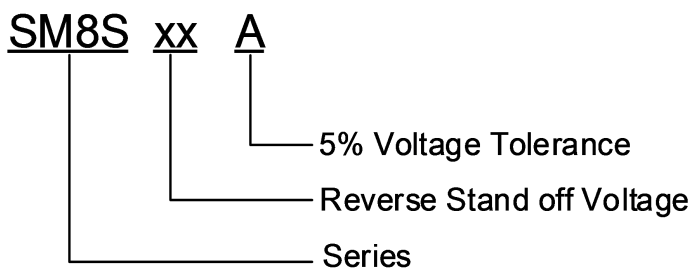


Outline Drawing – (DO-218AB)

Ref. (mm)	Millimeters	
	Min.	Max.
A	15.0	16.0
B	13.3	13.7
C	9.5	10.5
D	8.3	8.7
D1	2.4	3.0
E	8.7	9.3
F	9.7	10.3
G	2.5	3.5
H	4.7	5.1
I	1.5	2.5
K	0.5	0.7



Part Numbering System



Package Information

Out line	Reel (pcs)	Per carton (pcs)	Packing Option
Taping	750	3000	box

X-ON Electronics

Largest Supplier of Electrical and Electronic Components

Click to view similar products for [ESD Suppressors / TVS Diodes](#) category:

Click to view products by [PROSEMI](#) manufacturer:

Other Similar products are found below :

[60KS200C](#) [D18V0L1B2LP-7B](#) [D5V0F4U5P5-7](#) [NTE4902](#) [P4KE27CA](#) [P6KE11CA](#) [P6KE39CA-TP](#) [P6KE8.2A](#) [JANTX1N6053A](#)
[SA110CA](#) [SA60CA](#) [SA64CA](#) [SMBJ12CATR](#) [SMBJ33CATR](#) [SMBJ8.0A](#) [ESD101-B1-02ELS E6327](#) [ESD105-B1-02EL E6327](#) [ESD112-B1-02EL E6327](#) [ESD119B1W01005E6327XTSA1](#) [ESD5V0L1B02VH6327XTSA1](#) [ESD7451N2T5G](#) [19180-510](#) [CPDT-5V0USP-HF](#)
[3.0SMCJ33CA-F](#) [3.0SMCJ36A-F](#) [HSPC16701B02TP](#) [JANTX1N6126A](#) [JANTX1N6462](#) [JANTX1N6465](#) [USB50805e3/TR7](#)
[D3V3Q1B2DLP3-7](#) [D55V0M1B2WS-7](#) [DRTR5V0U4SL-7](#) [SCM1293A-04SO](#) [ESD200-B1-CSP0201 E6327](#) [SM12-7](#) [SM1605E3/TR13](#)
[SMLJ45CA-TP](#) [CEN955 W/DATA](#) [82350120560](#) [VESD12A1A-HD1-GS08](#) [CPDUR5V0R-HF](#) [CPDQC5V0U-HF](#) [CPDQC5V0USP-HF](#)
[CPDQC5V0-HF](#) [D1213A-01LP4-7B](#) [ESD101-B1-02EL E6327](#) [824500181](#) [MMAD1108/TR13](#) [5KP100A](#)