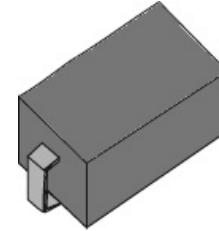


Features

- Low reverse leakage
- High forward surge capability
- High reliability
- High temperature soldering guaranteed:
260°C/10seconds
- Lead and body according with RoHS standard
- Green compound with suffix "-F" on Marking



SMA-W



RoHS
2002/95/EC

Mechanical Data

- Case: SMA-W Molded plastic
- Epoxy: UL 94V-0 rate flame retardant
- Lead: Pure tin plated, lead free

Maximum Ratings & Characteristics

Ratings at 25°C ambient temperature unless otherwise specified.

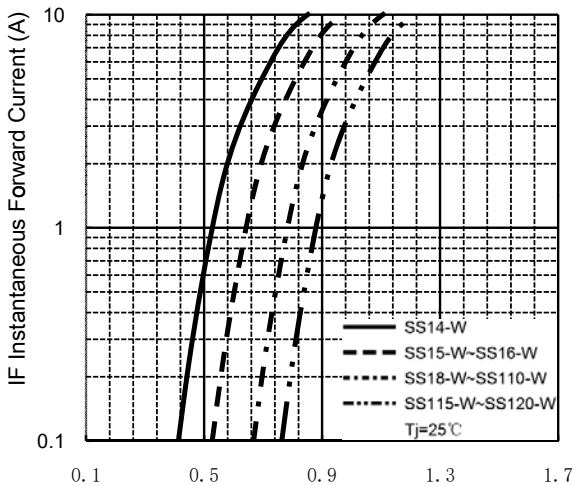
Parameter	Symbols	SS14 -W	SS15 -W	SS16 -W	SS18 -W	SS110 -W	SS115 -W	SS120 -W	Unit
Maximum repetitive peak reverse voltage	V_{RRM}	40	50	60	80	100	150	200	V
Maximum RMS voltage	V_{RMS}	28	35	42	56	70	105	140	V
Maximum DC blocking voltage	V_{DC}	40	50	60	80	100	150	200	V
Maximum average forward rectified current	$I_{F(AV)}$	1.0							A
Non-repetitive peak forward surge current 8.3 ms singlehalf sine-wave	I_{FSM}	30							A
@ $I_F=1.0A$ Maximum forward voltage	V_F	0.55	0.70	0.85		0.95		V	
@ V_{DC} Maximum reverse current	I_R	500			100				μA
$T_A=25^{\circ}C$		20			10				mA
$T_A=100^{\circ}C$									
Typical thermal resistance (Note 1)	$R_{\theta JA}$	88							$^{\circ}C/W$
VR=4.0V,f=1MHz Type junction capacitance	C_j	130							pF
Operating junction and storage temperature rang	T_j, T_{STG}	-55 --- +125			-55 --- +150				$^{\circ}C$

Note

- 1) Thermal resistance from junction to ambient, PCB mounted.

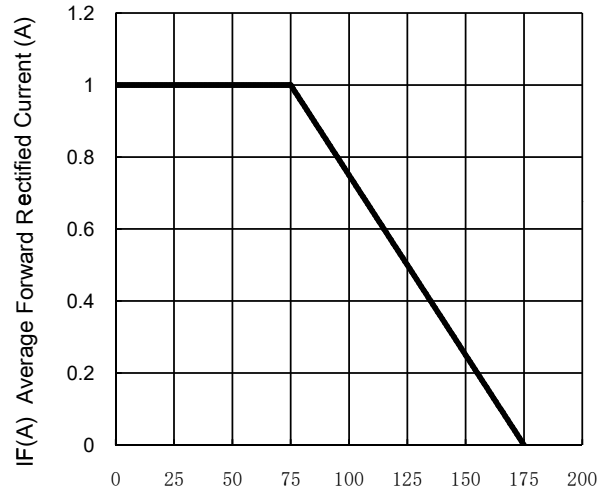
Characteristic Curves

TYPICAL FORWARD CHARACTERISTIC



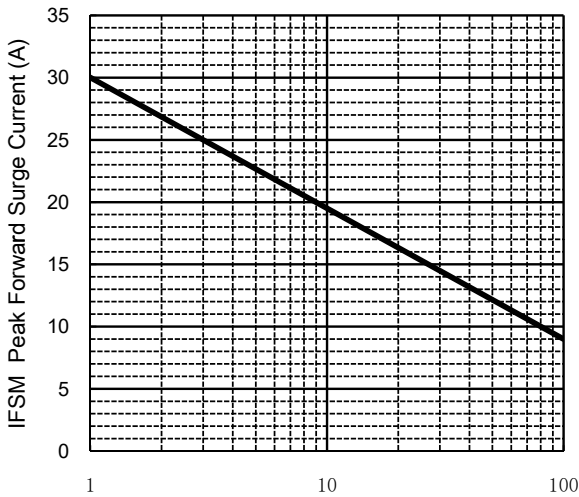
VF Instantaneous Forward Voltage (V)

FORWARD CURRENT DERATING CURVE



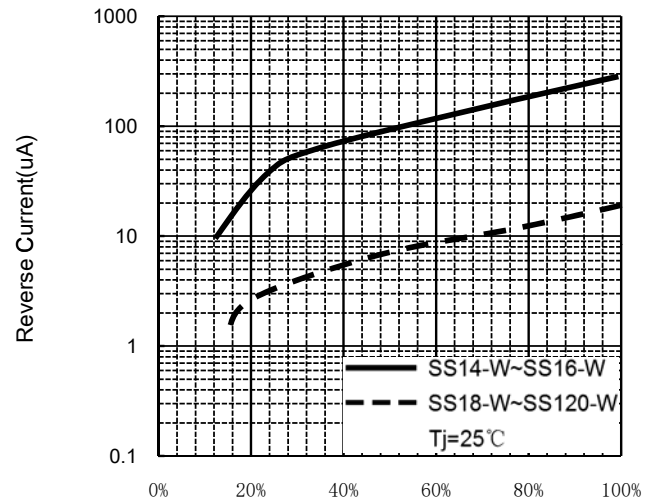
Tamb, ambient temperature (°C)

MAXIMUM NON REPETITIVE PEAK FORWARD SURGE CURRENT



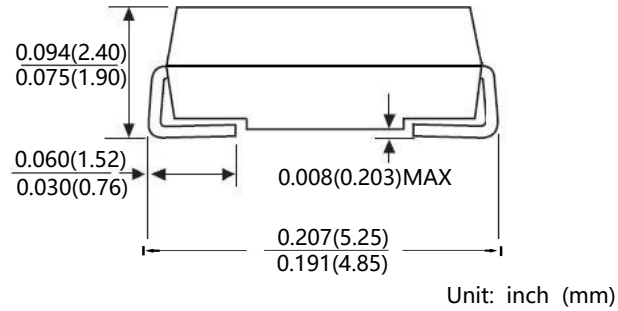
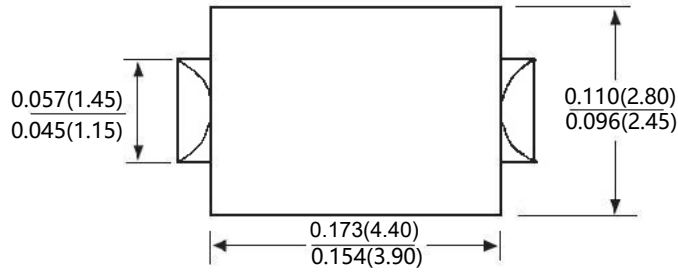
Number of Cycles at 60 Hz.

Typical Reverse Characteristics



Percent Of Rated Peak Reverse voltage %

Package Outline



Package Information

Qty: 5,000/Tape and reel

X-ON Electronics

Largest Supplier of Electrical and Electronic Components

Click to view similar products for [Schottky Diodes & Rectifiers](#) category:

Click to view products by [PROSEMI](#) manufacturer:

Other Similar products are found below :

[MA4E2039](#) [MA4E2508M-1112](#) [MBR10100CT-BP](#) [MBR1545CT](#) [MMBD301M3T5G](#) [GS1JE-TP](#) [RB160M-50TR](#) [BAS16E6433HTMA1](#)
[BAS 3010S-02LRH E6327](#) [BAT 54-02LRH E6327](#) [NSR05F40QNXT5G](#) [NSVR05F40NXT5G](#) [NTE555](#) [JANS1N6640](#) [SB07-03C-TB-H](#)
[SK310-T](#) [SK33A-TP](#) [SK34B-TP](#) [SS3003CH-TL-E](#) [PDS3100Q-7](#) [GA01SHT18](#) [CRS10I30A\(TE85L,QM](#) [MA4E2501L-1290](#)
[MBRB30H30CT-1G](#) [DMJ3940-000](#) [SB007-03C-TB-E](#) [SK32A-TP](#) [SK33B-TP](#) [SK35A-TP](#) [SK38B-LTP](#) [SK38B-TP](#) [NRVBM120LT1G](#)
[NTE505](#) [NTSB30U100CT-1G](#) [VS-6CWQ10FNHM3](#) [CRG04\(T5L,TEMQ\)](#) [ACDBA1100LR-HF](#) [ACDBA1200-HF](#) [ACDBA2100-HF](#)
[ACDBA240-HF](#) [ACDBA3100-HF](#) [CDBQC0530L-HF](#) [ACDBA260LR-HF](#) [ACDBA1100-HF](#) [MA4E2502L-1246](#) [10BQ060-M3/5BT](#)
[NRVB130LSFT1G](#) [CRS08TE85LQM](#) [PMAD1108-LF](#) [B120Q-13-F](#)