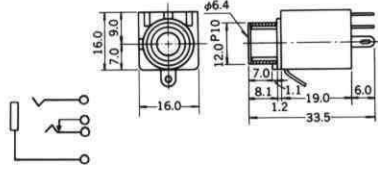


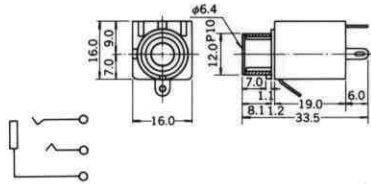
No.MJ-189LP

3-CONDUCTOR CLOSED CIRCUIT
PHONE JACK
Net Weight : 10 gr.



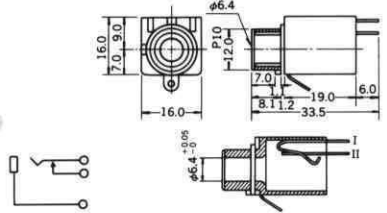
No.MJ-187LP

3-CONDUCTOR OPEN CIRCUIT
PHONE JACK
Net Weight : 9 gr.



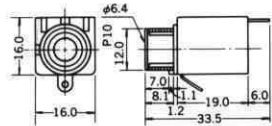
No.MJ-186LP

2-CONDUCTOR CLOSED CIRCUIT
PHONE JACK
Net Weight : 9 gr.



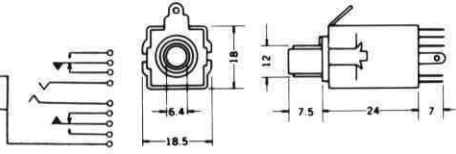
No.MJ-185LP

2-CONDUCTOR OPEN CIRCUIT
PHONE JACK
Net Weight : 9 gr.



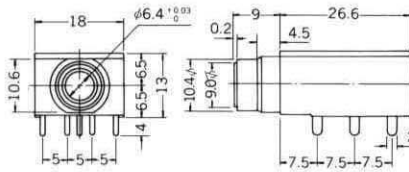
No.MJ-018E

3-CONDUCTOR DOUBLE CLOSED
CIRCUIT PHONE JACK
Net Weight : 13 gr.



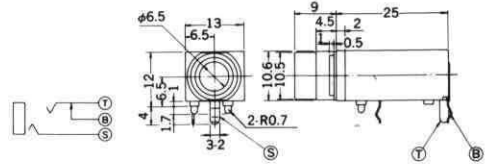
No.MJ-188LP-1~8

PC TYPE 3-CONDUCTOR
CIRCUIT 1/4" PHONE JACK
Net Weight : 11 gr.



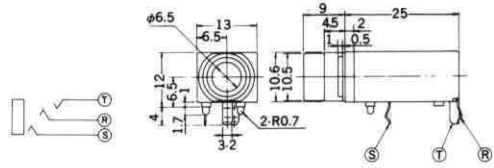
No.MX-616BLB

MONO
Net Weight : 3.5 gr.



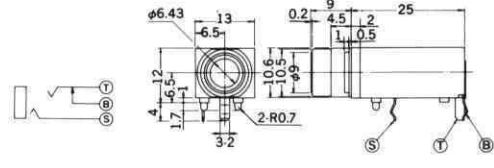
No.MX-616GLB

STEREO
Net Weight : 3.5 gr.



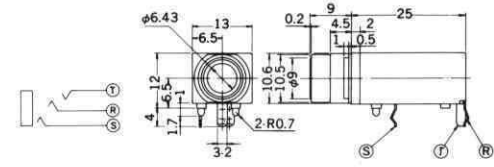
No.MX-617BMB

MONO
Net Weight : 3.5 gr.



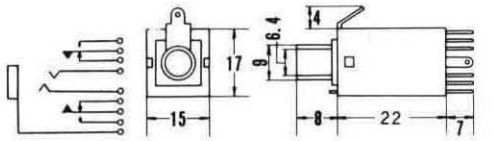
No.MX-617GMB

STEREO
Net Weight : 4 gr.



No.MJ-188

3-CONDUCTOR
CIRCUIT PHONE JACK
Net Weight : 12.5 gr.



SCHEMATIC

STYLE	Dimensions I	Dimensions H	Schematic 1	Schematic 2	Schematic 3	Schematic 4
	6.5		MJ-188LP-8	MJ-188LP-6	MJ-188LP-6S	MJ-188LP-5S
MJ-188LP-5						
MJ-188LP-3						
MJ-188LP-4						
MJ-188LP-2S						
MJ-188LP-2						
MJ-188LP-1						

X-ON Electronics

Largest Supplier of Electrical and Electronic Components

Click to view similar products for [Phone Connectors](#) category:

Click to view products by [Pro Signal](#) manufacturer:

Other Similar products are found below :

[R4F](#) [E12BPKG](#) [163-157J-E](#) [MT333X](#) [171-0350-EX](#) [171-101A-EX](#) [171-3302-EX](#) [NC3MG-V](#) [NS112BX](#) [JM2PB-AU BULK](#) [S2674](#) [280L](#)
[163-156N-2-E](#) [163-158N-2-E](#) [RJ5VI-S](#) [TM1R-AU](#) [TM2PBMJ-AU](#) [TM2PJ-AU](#) [TM2PJ-AU BULK](#) [4803.1351](#) [TS3PBJ-AU](#) [TS3PBMJ-AU](#)
[MP-101](#) [54B](#) [NM3](#) [T10711](#) [TJS-102](#) [TS3PBJ-AU BULK](#) [MT334F](#) [NJ3FP6F-P](#) [NPX-PROMO](#) [CMT336B](#) [P3218](#) [JS3PB-AU BULK](#)
[T16591](#) [XMT332A](#) [TP-201033-A](#) [114BPCSX](#) [CMT334B](#) [AA0-A4830-A00](#) [156-3402SHA-E](#) [MC-121](#) [M112BX](#) [TJSS-104](#) [TJT-105B](#) [TJT-](#)
[120-2](#) [TM2PB](#) [TM2PBJ-AU](#) [TM2R](#) [TM2RB](#)