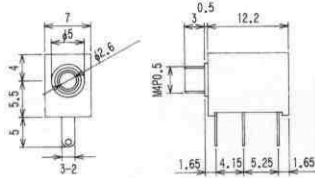
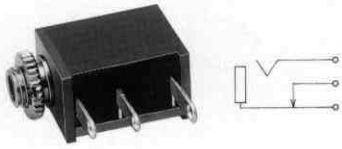


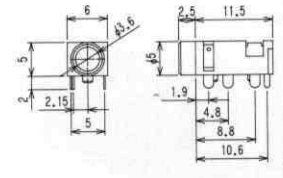




No.MJ-252 (φ2.5)  
MONO



No.MJ-2435 (φ3.5)  
STEREO



No.MJ-2925-5 (φ2.5)  
STEREO

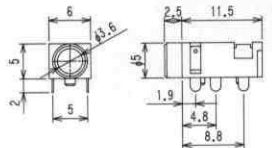
No.MJ-2925A (φ2.5)  
STEREO

No.MJ-2925B (φ2.5)  
STEREO

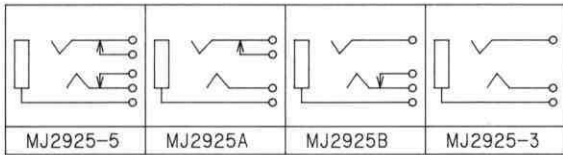
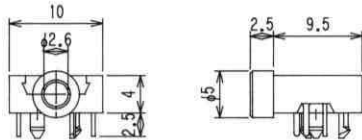
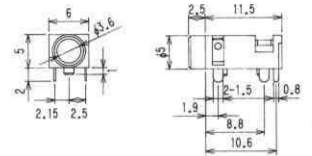
No.MJ-2925-3(φ2.5)  
STEREO



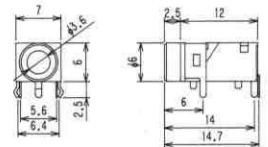
No.MJ-2335 (φ3.5)  
STEREO



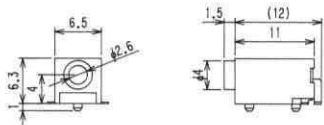
No.MJ-2235 (φ3.5)  
MONO



No.MJ-2135 (φ3.5)  
4-CONDUCTOR



No.M02-815A0 (φ2.5)  
STEREO



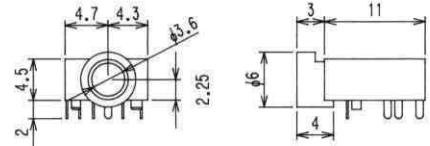
No.MJ-3335-6 (φ3.5)  
STEREO

No.MJ-3335-5 (φ3.5)  
STEREO

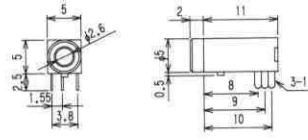
No.MJ-3335-4 (φ3.5)  
STEREO

No.MJ-3335-3 (φ3.5)  
STEREO

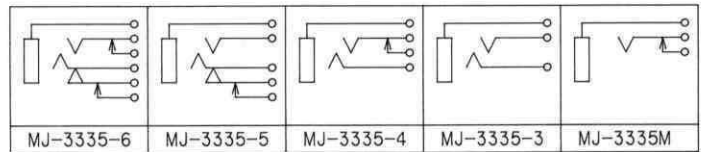
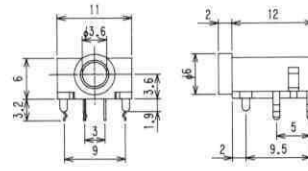
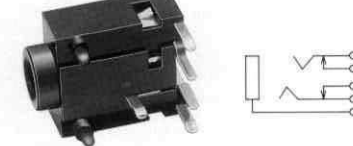
No.MJ-3335M (φ3.5)  
MONO



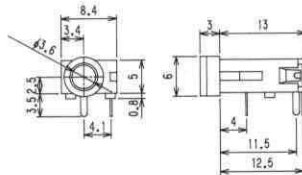
No.MJ-2625 (φ2.5)  
MONO



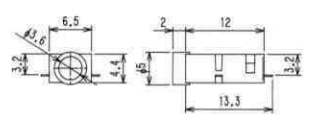
No.MJ-2035 (φ3.5)  
STEREO



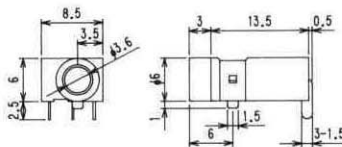
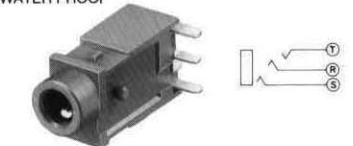
No.MJ-3235 (φ3.5)  
MONO



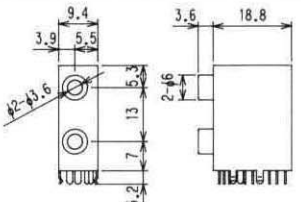
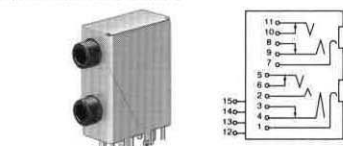
No.M03-798A0 (φ3.5)  
STEREO



No.M03-749A0  
3.5MM STEREO JACK FOR P.C.  
WATER PROOF

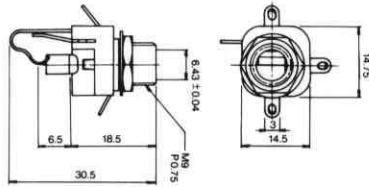


No.MJ-653  
3.5MM DOUBLE STEREO JACK FOR P.C.  
W/FULL SHIELD HOUSING



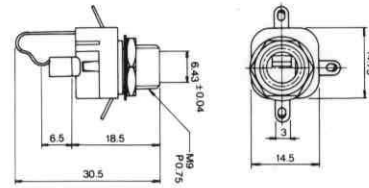
**No.MJ-178M**

NEW DESIGNED CHASSIS MTG.  
3-CON. CLOSED CIRCUIT JACK  
Net Weight : 7 gr.



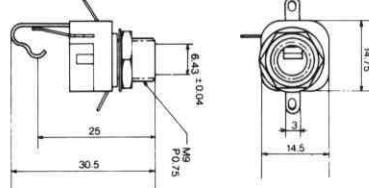
**No.MJ-161M**

NEW DESIGNED CHASSIS MTG.  
3-CON. OPEN CIRCUIT JACK  
Net Weight : 6.5 gr.



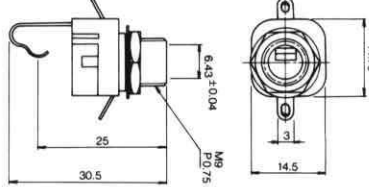
**No.MJ-160M**

NEW DESIGNED CHASSIS MTG.  
2-CON. CLOSED CIRCUIT JACK  
Net Weight : 6.5 gr.



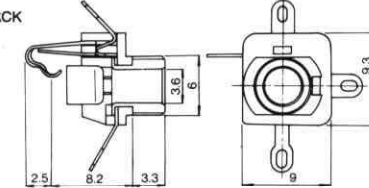
**No.MJ-159M**

NEW DESIGNED CHASSIS MTG.  
2-CON. OPEN CIRCUIT JACK  
Net Weight : 6 gr.



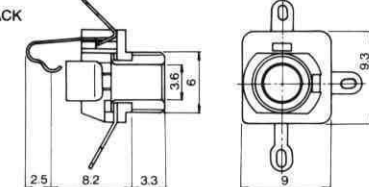
**No.MJ-083**

BRANDNEW MINIATURE (3.5mm) STEREO JACK  
CLOSED CIRCUIT+CHASSIS MTG.  
Net Weight : 2 gr.



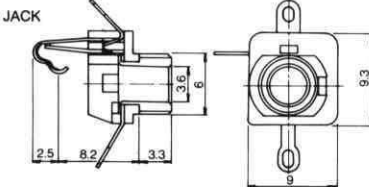
**No.MJ-082**

BRANDNEW MINIATURE (3.5mm) STEREO JACK  
OPEN CIRCUIT+CHASSIS MTG.  
Net Weight : 2 gr.



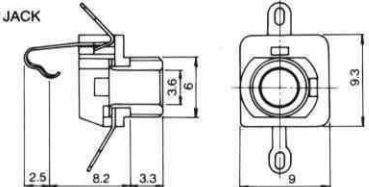
**No.MJ-081**

NEW DESIGNED MINIATURE (3.5mm) MONO JACK  
CLOSED CIRCUIT+CHASSIS MTG.  
Net Weight : 1.8 gr.

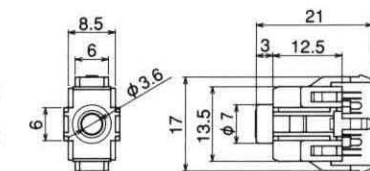
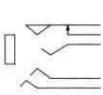


**No.MJ-080**

NEW DESIGNED MINIATURE (3.5mm) MONO JACK  
OPEN CIRCUIT+CHASSIS MTG.  
Net Weight : 1.5 gr.

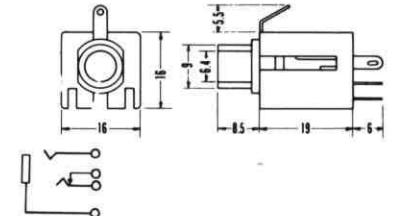


**No.M03-517**  
3.5MM STEREO JACK FOR P.C.  
w/metal sleeve



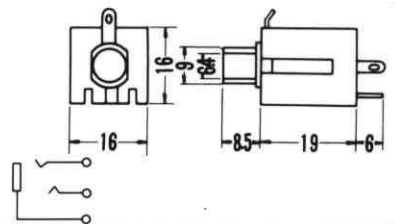
**No.MJ-189**

3-CONDUCTOR CLOSED CIRCUIT  
PHONE JACK  
Net Weight : 10 gr.



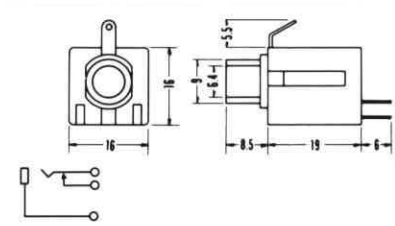
**No.MJ-187**

3-CONDUCTOR OPEN CIRCUIT  
PHONE JACK  
Net Weight : 9 gr.



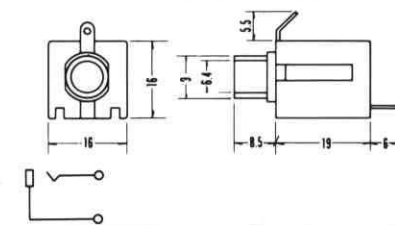
**No.MJ-186**

2-CONDUCTOR CLOSED CIRCUIT  
PHONE JACK  
Net Weight : 9 gr.



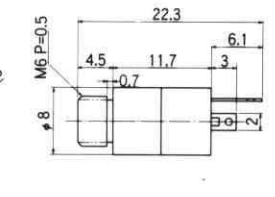
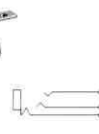
**No.MJ-185**

2-CONDUCTOR OPEN CIRCUIT  
PHONE JACK  
Net Weight : 9 gr.



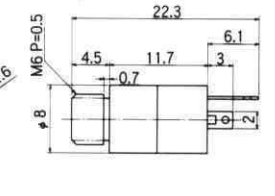
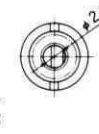
**No.MJ-074N**

CHASSIS MTG. 3-CON. STEREO  
MINIATURE JACK (φ3.5)



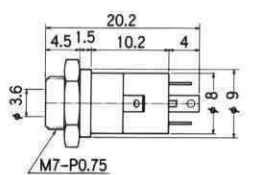
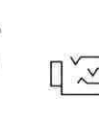
**No.MJ-070N**

CHASSIS MTG. 3-CON. SUB-MINI. JACK  
(φ2.5)



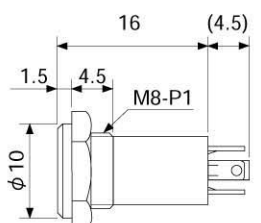
**No.MJ-079**

CHASSIS MTG. MINI. 4-CONDUCTOR  
JACK(φ3.5)



**CHASSIS MTG. JACK**

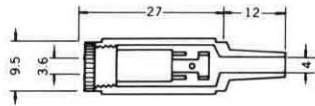
- No.MJ-073H (φ3.5) STEREO
- No.MJ-164H (φ3.5) MONO
- No.MJ-064H (φ3.5) 4-CONDUCTOR
- No.MJ-165H (φ2.5) MONO
- No.MJ-071H (φ2.5) STEREO





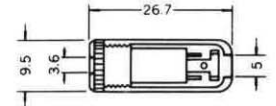
No.MJ-073 STEREO (3.5φ)  
No.MJ-164A MONO (3.5φ)

3-CON. MINIATURE INLINE JACK w/cable protector  
Net Weight: 3.5 gr



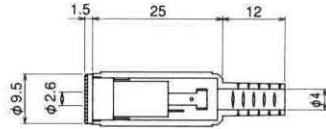
No.MJ-075 STEREO (3.5φ)  
No.MJ-164 MONO (3.5φ)

Net Weight: 3 gr



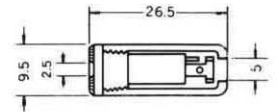
No.MJ-072 STEREO (2.5φ)  
No.MJ-165A MONO (2.5φ)

Net Weight: 3 gr



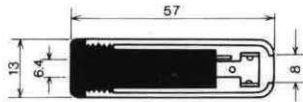
No.MJ-071 STEREO (2.5φ)  
No.MJ-165 MONO (2.5φ)

SUB-MINIATURE INLINE JACK  
Net Weight: 3 gr



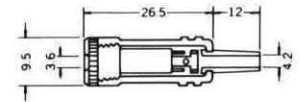
No.MJ-168A MONO(6.3φ)

2-CON. 1/4" PHONE INLINE JACK  
Net Weight: 8 gr



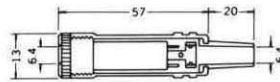
No.MJ-076M STEREO (3.5φ)  
No.MJ-166M MONO (3.5φ)

Net Weight: 6 gr



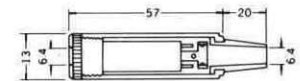
No.MJ-177MS STEREO (6.3φ)  
No.MJ-169MS MONO (6.3φ)

Net Weight: 12.5 gr



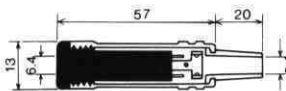
No.MJ-117M STEREO (6.3φ)  
No.MJ-116M MONO (6.3φ)

Net Weight: 8 gr



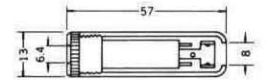
No.MJ-177A STEREO(6.3φ)

3-CON. 1/4" PHONE INLINE JACK w/shielded handle  
Net Weight: 12.5 gr



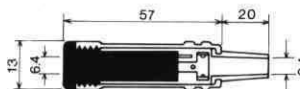
No.MJ-175M STEREO (6.3φ)  
No.MJ-168M MONO (6.3φ)

Color: Black,Red,Gray  
Net Weight: 8 gr



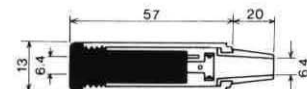
No.MJ-169A MONO(6.3φ)

2-CON. 1/4" PHONE INLINE JACK w/shielded handle  
Net Weight: 12.5 gr



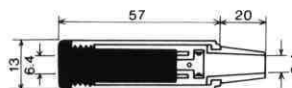
No.MJ-116A MONO(6.3φ)

2-CON. 1/4" PHONE INLINE JACK  
Net Weight: 8 gr



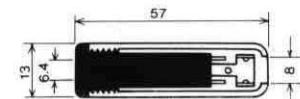
No.MJ-117A STEREO(6.3φ)

3-CON. 1/4" PHONE INLINE JACK  
Net Weight: 8 gr



No.MJ-175A STEREO(6.3φ)

3-CON. 1/4" PHONE INLINE JACK  
Net Weight: 8 gr



## **X-ON Electronics**

Largest Supplier of Electrical and Electronic Components

*Click to view similar products for [pro signal manufacturer](#):*

Other Similar products are found below :

[KVM-404](#) [JR8030/25M](#) [MP-012LN](#) [MJ-2325](#) [AV02019](#) [AV02009](#) [MC34967](#) [MC34971](#) [ABI-049-RC](#) [SVC675S-10M](#) [11.99.8870](#)  
[PSG01592](#) [PSG01567](#) [PSG01546](#) [PSG01522](#) [PS11468](#) [PS11199](#) [PS11072](#) [PS11360](#) [PS11156](#) [PS11147](#) [PSG03905](#) [PSG00559](#) [PSG00564](#)  
[PS000177](#) [PHONO PLG-PLG 10M](#) [AV02560](#) [AV02595](#) [USB-0039DBL](#) [PSG90957](#) [PSG01495](#) [PSG01462](#) [PS11386](#) [PS11193](#) [PS11028](#)  
[PS11179](#) [RP004](#) [PSG90986](#) [27-9650](#) [PSG02699](#) [24-15623](#) [ABS-237-RC](#) [JR8013-10M](#) [JR8009/5M](#) [LS00532](#) [AVVCL65](#) [LCL](#) [PSG90820](#)  
[PSG90806](#) [PSG01544](#)