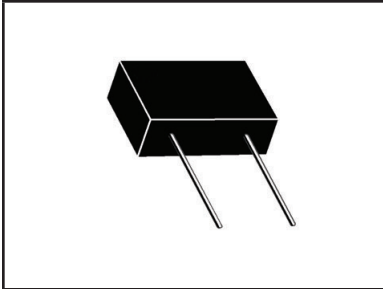


## 15kW POWER TVS COMPONENT



**THRU-HOLE PACKAGE**

### DESCRIPTION

The 15KP Series, are discrete 15,000 Watt, silicon transient voltage suppressors (TVS) designed for use in applications where large voltage transients can permanently damage voltage sensitive components and equipment.

The 15KP series is available in voltages ranging from 17V to 280V with 5 percent and 10 percent tolerances. Both tolerances are referenced to the power supply output or operating voltage level. This series is compatible with IEC 61000-4-5 (Surge) requirements.

### FEATURES

- Compatible with IEC 61000-4-5 (Surge): 48A, 8/20 $\mu$ s - L3(Line-Ground), L4(Line-Line) & L1 (Power)
- 15,000 Watts Peak Pulse Power per Line (tp = 10/1000 $\mu$ s)
- Unidirectional and Bidirectional Configurations
- Easy Mounting to Printed Circuit Board
- Available in Multiple Voltages Ranging From 17V to 280V
- RoHS Complaint (Exemption #7)

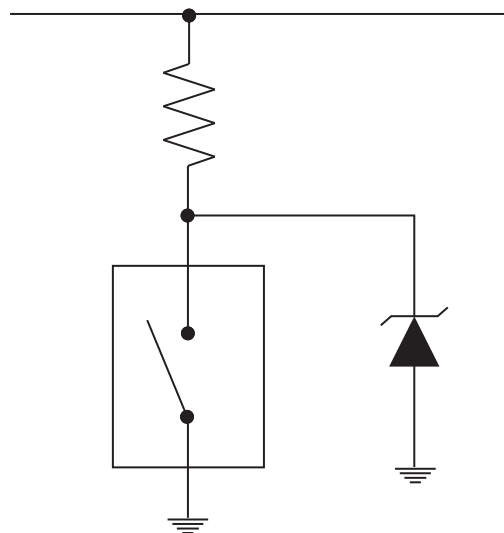
### APPLICATIONS

- Relay Drives
- Motor (Start/Stop) Back EMF Protection
- Module Lightning Protection
- Secondary Lightning Protection for AC/DC

### MECHANICAL CHARACTERISTICS

- Molded Case
- Approximate Weight: 13 grams
- Lead-Free Pure-Tin Plating (Annealed)
- Solder Reflow Temperature:  
Pure-Tin - Sn, 100: 260-270°C
- Flammability Rating UL 94V-0

### APPLICATION



**TYPICAL DEVICE CHARACTERISTICS**
**MAXIMUM RATINGS @ 25°C Unless Otherwise Specified**

PARAMETER	SYMBOL	VALUE	UNITS
Peak Pulse Power (tp = 10/1000µs) - See Figure 1	$P_{PP}$	15,000	Watts
Forward Surge Rating - 1/120 seconds - See Note 2	$I_F$	200	Amps
Steady State Power Dissipation	$P_P$	1.0	Watts
Storage Temperature	$T_{STG}$	-55 to 150	°C
Operating Temperature	$T_L$	-55 to 150	°C

**ELECTRICAL CHARACTERISTICS PER LINE @ 25°C Unless Otherwise Specified**

PART NUMBER (Notes 1 - 2)	RATED STAND-OFF VOLTAGE  $V_{WM}$ VOLTS	BREAKDOWN VOLTAGE		MAXIMUM LEAKAGE CURRENT  @ $V_{WM}$ $I_D$ µA	MAXIMUM CLAMPING VOLTAGE (Fig. 2)  @ 10/1000µS $V_C$ @ $I_{PP}$	TEMPERATURE COEFFICIENT OF $V_{(BR)}$  $qV_{(BR)}$ mV/°C
		MIN $V_{(BR)}$ VOLTS	@ $I_T$ mA			
15KP17	17.0	18.9	50	5000	32.3V @ 464.0A	19
15KP17A	17.0	18.9	50	5000	29.3V @ 512.0A	17
15KP18	18.0	20.0	50	5000	34.2V @ 439.0A	20
15KP18A	18.0	20.0	50	5000	30.9V @ 485.0A	18
15KP20	20.0	22.2	20	1500	37.9V @ 396.0A	24
15KP20A	20.0	22.2	20	1500	34.3V @ 437.0A	21
15KP22	22.0	24.4	10	500	41.1V @ 365.0A	27
15KP22A	22.0	24.4	10	500	37.1V @ 404.0A	24
15KP24	24.0	26.7	5	150	45.0V @ 333.0A	30
15KP24A	24.0	26.7	5	150	40.7V @ 369.0A	27
15KP26	26.0	28.9	5	50	48.7V @ 308.0A	32
15KP26A	26.0	28.9	5	50	44.0V @ 341.0A	29
15KP28	28.0	31.1	5	25	52.4V @ 286.0A	35
15KP28A	28.0	31.1	5	25	47.5V @ 316.0A	31
15KP30	30.0	33.3	5	15	56.2V @ 267.0A	27
15KP30A	30.0	33.3	5	15	50.7V @ 296.0A	34
15KP33	33.0	36.7	5	10	60.6V @ 248.0A	42
15KP33A	33.0	36.7	5	10	54.8V @ 274.0A	38
15KP36	36.0	40.0	5	10	66.0V @ 227.0A	46
15KP36A	36.0	40.0	5	10	59.7V @ 251.0A	41
15KP40	40.0	44.4	5	10	72.8V @ 206.0A	51
15KP40A	40.0	44.4	5	10	65.8V @ 228.0A	46
15KP43	43.0	47.8	5	10	77.1V @ 195.0A	55
15KP43A	43.0	47.8	5	10	69.7V @ 215.0A	50
15KP45	45.0	50.0	5	10	80.7V @ 186.0A	57
15KP45A	45.0	50.0	5	10	73.0V @ 205.0A	52

## TYPICAL DEVICE CHARACTERISTICS

ELECTRICAL CHARACTERISTICS PER LINE @ 25°C Unless Otherwise Specified						
PART NUMBER (Notes 1 - 2)	RATED STAND-OFF VOLTAGE  $V_{WM}$ VOLTS	BREAKDOWN VOLTAGE		MAXIMUM LEAKAGE CURRENT  @ $V_{WM}$ $I_D$ $\mu A$	MAXIMUM CLAMPING VOLTAGE (Fig. 2)  @ 10/1000 $\mu S$ $V_C$ @ $I_{PP}$	TEMPERATURE COEFFICIENT OF $V_{(BR)}$  $qV_{(BR)}$ mV/°C
		MIN $V_{(BR)}$ VOLTS	@ $I_T$ mA			
15KP48	48.0	53.3	5	10	85.9V @ 175.0A	62
15KP48A	48.0	53.3	5	10	77.7V @ 193.0A	56
15KP51	51.0	56.7	5	10	91.5V @ 164.0A	66
15KP51A	51.0	56.7	5	10	82.8V @ 181.0A	60
15KP54	54.0	60.0	5	10	96.8V @ 155.0A	70
15KP54A	54.0	60.0	5	10	87.5V @ 171.0A	63
15KP58	58.0	64.4	5	10	104.0V @ 144.0A	76
15KP58A	58.0	64.4	5	10	94.0V @ 160.0A	68
15KP60	60.0	66.7	5	10	107.0V @ 140.0A	78
15KP60A	60.0	66.7	5	10	97.3V @ 154.0A	71
15KP64	64.0	71.1	5	10	115.0V @ 130.0A	84
15KP64A	64.0	71.1	5	10	104.0V @ 144.0A	76
15KP70	70.0	77.8	5	10	126.0V @ 119.0A	92
15KP70A	70.0	77.8	5	10	114.0V @ 132.0A	83
15KP75	75.0	83.3	5	10	135.0V @ 111.0A	100
15KP75A	75.0	83.3	5	10	122.0V @ 123.0A	89
15KP78	78.0	86.7	5	10	140.0V @ 107.0A	104
15KP78A	78.0	86.7	5	10	126.0V @ 119.0A	93
15KP85	85.0	94.4	5	10	152.0V @ 99.0A	113
15KP85A	85.0	94.4	5	10	137.0V @ 109.0A	102
15KP90	90.0	100.0	5	10	160.0V @ 94.0A	120
15KP90A	90.0	100.0	5	10	146.0V @ 103.0A	109
15KP100	100.0	111.0	5	10	179.0V @ 84.0A	134
15KP100A	100.0	111.0	5	10	162.0V @ 93.0A	121
15KP110	110.0	122.0	5	10	196.0V @ 77.0A	147
15KP110A	110.0	122.0	5	10	178.0V @ 84.0A	133
15KP120	120.0	133.0	5	10	214.0V @ 70.0A	161
15KP120A	120.0	133.0	5	10	193.0V @ 78.0A	145
15KP130	130.0	144.0	5	10	231.0V @ 65.0A	174
15KP130A	130.0	144.0	5	10	209.0V @ 72.0A	157
15KP150	150.0	167.0	5	10	268.0V @ 56.0A	202
15KP150A	150.0	167.0	5	10	243.0V @ 62.0A	183
15KP160	160.0	178.0	5	10	287.0V @ 52.0A	216
15KP160A	160.0	178.0	5	10	259.0V @ 58.0A	195

**TYPICAL DEVICE CHARACTERISTICS**
**ELECTRICAL CHARACTERISTICS PER LINE @ 25°C Unless Otherwise Specified**

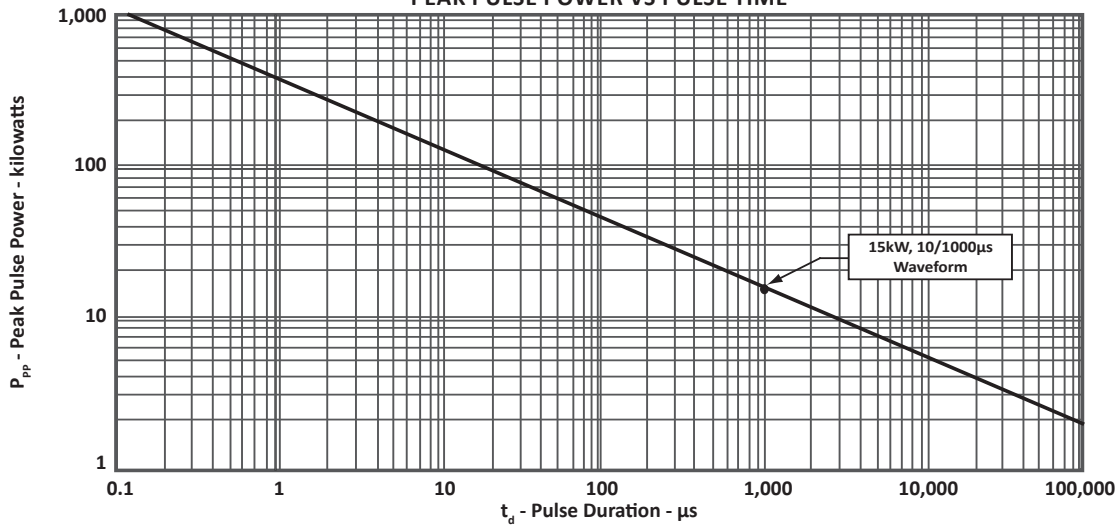
PART NUMBER (Notes 1 - 2)	RATED STAND-OFF VOLTAGE  $V_{WM}$ VOLTS	BREAKDOWN VOLTAGE		MAXIMUM LEAKAGE CURRENT  @ $V_{WM}$ $I_D$ $\mu A$	MAXIMUM CLAMPING VOLTAGE (Fig. 2)  @ 10/1000 $\mu S$ $V_C$ @ $I_{PP}$	TEMPERATURE COEFFICIENT OF $V_{(BR)}$  $qV_{(BR)}$ $mV/^{\circ}C$
		MIN $V_{(BR)}$ VOLTS	@ $I_T$ mA			
15KP170	170.0	189.0	5	10	304.0V @ 49.0A	229
15KP170A	170.0	189.0	5	10	275.0V @ 55.0A	207
15KP180	180.0	200.0	5	10	321.0V @ 47.0A	242
15KP180A	180.0	200.0	5	10	291.0V @ 52.0A	219
15KP200	200.0	222.0	5	10	356.0V @ 42.0A	269
15KP200A	200.0	222.0	5	10	322.0V @ 47.0A	243
15KP220	220.0	245.0	5	10	393.0V @ 38.0A	297
15KP220A	220.0	245.0	5	10	356.0V @ 42.0A	269
15KP240	240.0	267.0	5	10	428.0V @ 35.0A	324
15KP240A	240.0	267.0	5	10	388.0V @ 39.0A	293
15KP260	260.0	289.0	5	10	464.0V @ 32.0A	352
15KP260A	260.0	289.0	5	10	419.0V @ 36.0A	317
15KP280	280.0	311.0	5	10	500.0V @ 30.0A	378
15KP280A	280.0	311.0	5	10	452.0V @ 33.0A	342

**NOTES**

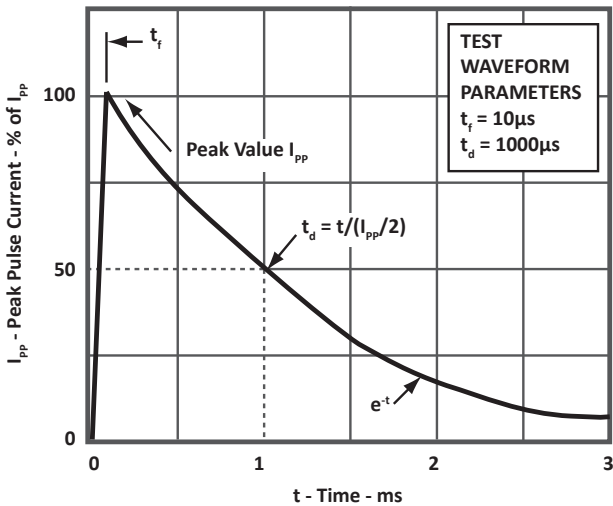
- Part numbers shown are unidirectional devices. Add a "CA" suffix to specify bidirectional devices, such as 15KP20CA.
- $V_f = 7.5$  Volts @ 200A, 8.3ms(1/2 Sine Wave) - Unidirectional devices only.

**TYPICAL DEVICE CHARACTERISTICS**

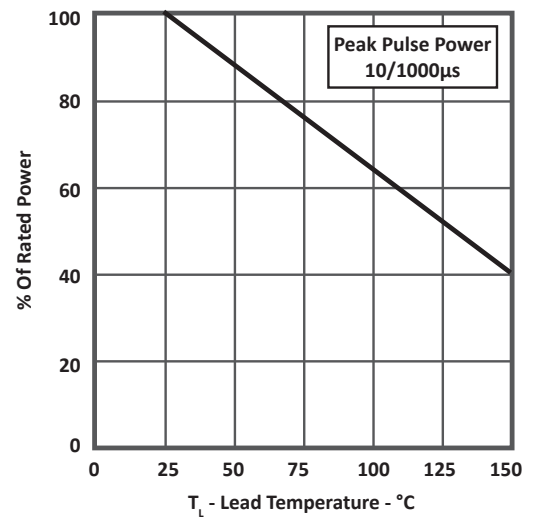
**FIGURE 1  
PEAK PULSE POWER VS PULSE TIME**



**FIGURE 2  
PULSE WAVEFORM**



**FIGURE 3  
POWER DERATING CURVE**

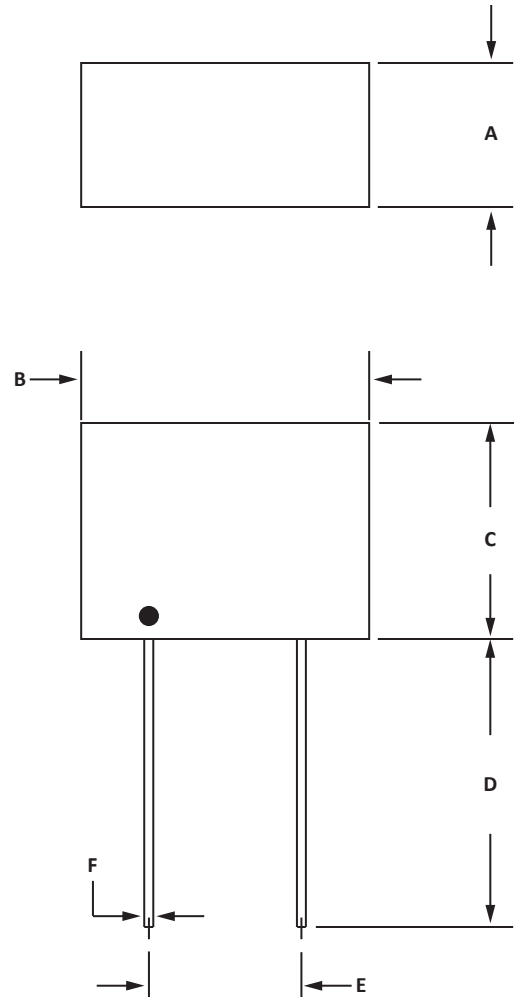


**THRU-HOLE PACKAGE INFORMATION**
**OUTLINE DIMENSIONS**

DIM	MILLIMETERS		INCHES	
	MIN	MAX	MIN	MAX
A	9.18	11.22	0.36	0.44
B	24.38	26.42	0.96	1.04
C	15.75	17.27	0.62	0.68
D	16.51	-	0.65	-
E	14.74	15.75	0.58	0.62
F	1.19	1.35	0.047	0.053

**NOTES**

1. Dimensions are exclusive of mold flash and metal burrs.


**ORDERING INFORMATION**

BASE PART NUMBER (xx = Voltage)	LEADFREE SUFFIX	TAPE SUFFIX	QTY/REEL	REEL SIZE	TUBE QTY
15KPxx	-LF	n/a	n/a	n/a	n/a
15KPxxA	-LF	n/a	n/a	n/a	n/a
15KPxxCA	-LF	n/a	n/a	n/a	n/a

**NOTES**

1. Marking on Part - logo, part number, date code and positive terminal marked with dot (unidirectional only).

Package outline per document number 06027.R2 9/09.

## COMPANY INFORMATION

---

### COMPANY PROFILE

In business more than 25 years, ProTek Devices™ is a privately held semiconductor company. The company offers a product line of overvoltage protection and overcurrent protection components. These include transient voltage suppressor array (TVS arrays) avalanche breakdown diode, steering diode TVS array and electronics SMD chip fuses. These components deliver circuit protection in electronic systems from numerous overvoltage and overcurrent events. They include lightning; electrostatic discharge (ESD); nuclear electromagnetic pulses (NEMP); inductive switching; and electromagnetic interference (EMI) / radio frequency interference (RFI). ProTek Devices also offers LED wafer die for ESD protection and related high frequency products. ProTek Devices is ISO 9001:2015 certified.

### CONTACT US

#### Corporate Headquarters

2929 South Fair Lane  
Tempe, Arizona 85282  
USA

#### By Telephone

General: 602-431-8101  
Sales: & Marketing: 602-414-5109  
Customer Service: 602-414-5114  
Product Technical Support: 602-414-5107

#### By Fax

General: 602-431-2288

#### By E-mail:

Asia Sales: [asiasales@protekdevices.com](mailto:asiasales@protekdevices.com)  
Europe Sales: [europesales@protekdevices.com](mailto:europesales@protekdevices.com)  
U.S. Sales: [ussales@protekdevices.com](mailto:ussales@protekdevices.com)  
Distributor Sales: [distysales@protekdevices.com](mailto:distysales@protekdevices.com)  
Customer Service: [service@protekdevices.com](mailto:service@protekdevices.com)  
Technical Support: [support@protekdevices.com](mailto:support@protekdevices.com)

#### ProTek Devices (Asia Pacific) Pte. Ltd.

8 Ubi Road 2, #06-19  
Zervex  
Singapore - 408538  
Tel: +65-67488312  
Fax: +65-67488313

#### Web

[www.protekdevices.com](http://www.protekdevices.com)

COPYRIGHT © ProTek Devices 1998 - This literature is subject to all applicable copyright laws and is not for resale in any manner.

SPECIFICATIONS: ProTek reserves the right to change the electrical and or mechanical characteristics described herein without notice.

DESIGN CHANGES: ProTek reserves the right to discontinue product lines without notice and that the final judgement concerning selection and specifications is the buyer's and that in furnishing engineering and technical assistance. ProTek assumes no responsibility with respect to the selection or specifications of such products. ProTek makes no warranty, representation or guarantee regarding the suitability of its products for any particular purpose, nor does ProTek assume any liability arising out of the application or use of any product or circuit and specifically disclaims any and all liability without limitation special, consequential or incidental damages.

LIFE SUPPORT POLICY: ProTek Devices products are not authorized for use in life support systems without written consent from the factory.

## X-ON Electronics

Largest Supplier of Electrical and Electronic Components

*Click to view similar products for TVS Diodes - Transient Voltage Suppressors category:*

*Click to view products by [Protek manufacturer](#):*

Other Similar products are found below :

[60KS200C](#) [D12V0H1U2WS-7](#) [PSR05-LF-T7](#) [DESD5V0U1BB-7](#) [P6KE39CA-TP](#) [JAN1N6461](#) [SMAJ440A-TP](#) [SMLJ30CA-TP](#)  
[ESD0P8RFL E6327](#) [ESD101-B1-02ELS E6327](#) [ESD103-B1-02EL E6327](#) [ESD105-B1-02EL E6327](#) [ESD112-B1-02EL E6327](#)  
[ESD119B1W01005E6327XTSA1](#) [ESD5V0L1B02VH6327XTSA1](#) [T1042NLT](#) [3.0SMCJ36A-F](#) [MMD25-0071P1](#) [JANTX1N6126A](#)  
[JANTX1N6465](#) [DESD5V0U1BL-7B](#) [ESD200-B1-CSP0201 E6327](#) [ESD203-B1-02EL E6327](#) [SM12-7](#) [SMF8.0A-TP](#) [SMLJ45CA-TP](#)  
[CEN955 W/DATA](#) [P6KE15CA-TP](#) [ESD101-B1-02EL E6327](#) [P6SMBJ20CA](#) [JANTX1N6163A](#) [SR2835ESKG](#) [SA90CA](#) [SA130A](#)  
[SMLJ40CA-TP](#) [ESD110-B1-02ELS E6327](#) [ESD205-B1-02ELS E6327](#) [ESD208-B1-02ELS E6327](#) [PTVS12VZ1USKNYL](#) [3.0SMCJ24A-13](#)  
[3.0SMCJ30A-13](#) [30KPA36A-LF](#) [30KPA48CALF](#) [3.0SMCJ28A-13](#) [3.0SMCJ5.0A-13](#) [TVS4201MR6T1G](#) [VS10P15C-LF](#) [VTVS9V4ASMF-](#)  
[M3-08](#) [RSA30LTE25](#) [1.5KE100CA-B](#)