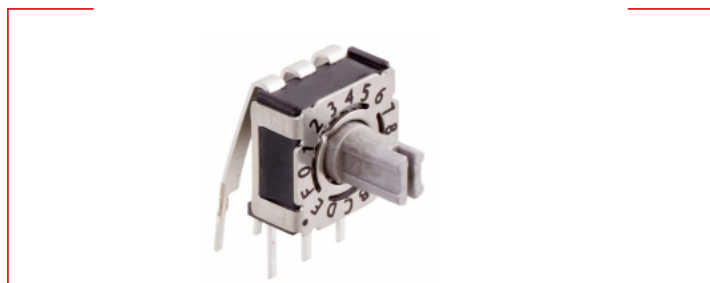




Technical data // P36THR 1 02 L254 -

Rotary Code Switch

Angular 2.54 mm Through Hole Reflow



**Highlights**

- Solid PCB pins
- Contacts with abrasion resistant hard gold plating
- Central C-contact
- Extra sealed design with high temperature resistance
- Switches are solder and flux sealed and washable
- 100 % electronic inspection and testing
- 90° turned zero position available
- Pin rows with initial tension, no automated assembly possible

**Mechanical Data**

Type	vertical
Fixation mode	THR
Height	7.7 mm
Length	5.24 mm
Width	7.4 mm
Pin connection	3+3
Perm. ambient temperature	-50 °C ... +125 °C
Perm. storage temperature	-55 °C ... +135 °C
Torque	1.2 ± 0.2 Ncm
Mechanical lifetime	25.000 steps
Positions per rotation	10 / 16 - more versions on request
Degree of protection	comparable IP67
Sealing	O-Ring
Humidity	21 days at 40 °C, 93 %RH
THR through holes	plated through
THR PCB hole diameter	0.8 mm
Outside diameter plated land	1.8 mm
Sinus-vibration testing	acc. IEC 68-2-6
Frequency range	10 Hz ... 500 Hz ... 10 Hz, sliding
Acceleration	10.0 g
Amplitude	6.0 mm



Technical data

// P36THR 1 02 L254 -

Rotary Code Switch

Angular 2.54 mm Through Hole Reflow

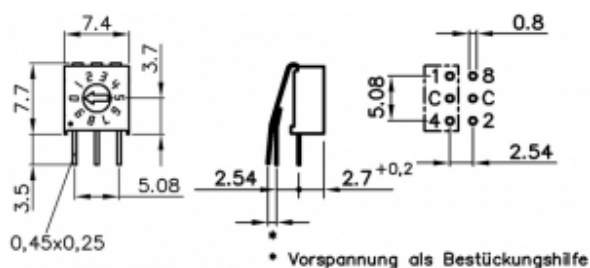
**Mechanical Data**

Shock testing	acc. IEC 68-2-27
Shock acceleration amplitude	50.0 g
Duration of nominal shock	11.0 ms
Directions	6 ( $\pm x, \pm y, \pm z$ ) 3 times each
Reflow soldering	10 s / 260 °C
Wave soldering	Double Wave acc. DIN EN 61760-1:2006
Iron soldering	4 s / 350 °C

**Electrical Data**

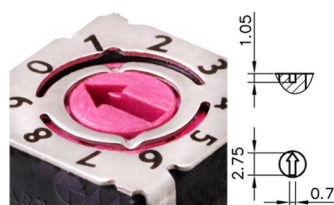
Operating voltage	$\leq 42.0$ V
Standby current	$\leq 0.4$ A
Contact load, dynamic	$\leq 0.1$ A
Minimum load	1.0 $\mu$ A 20mVDC
Test voltage	250.0 V 50 Hz / 1.0 min
Contact resistance	$< 80.0$ mOhm
Insulation resistance	$> 100.0$ MOhm

Technical Drawing



Configuration

Actuators



Arrow-shaped slot



Technical data

// P36THR 1 02 L254 -

Rotary Code Switch

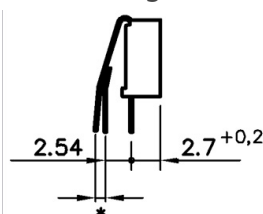
Angular 2.54 mm Through Hole Reflow

Codes

BCD Complement						
Typ 02						
	C	$\bar{1}$	$\bar{2}$	$\bar{4}$	$\bar{8}$	
0	●	●	●	●	●	0
1	●		●	●	●	1
2	●	●		●	●	2
3	●			●	●	3
4	●	●	●		●	4
5	●		●		●	5
6	●	●			●	6
7	●				●	7
8	●	●	●	●		8
9	●		●	●		9

Contact pins

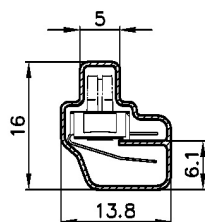
BCD Complement, Pos 10,  
Rotor orange



\* Vorspannung als Bestückungshilfe

Left angular 2.54 mm

Packing



Tube

## X-ON Electronics

Largest Supplier of Electrical and Electronic Components

*Click to view similar products for PTR HARTMANN manufacturer:*

Other Similar products are found below :

[PT65301](#) [SMCD137AK2](#) [PT65102](#) [P65THR103L254](#) [P65THR101L254](#) [B5LS](#) [PT65102L254](#) [P36THR301L254](#) [PT65303](#) [P65THR701L254](#)  
[P60ATHR101](#) [P36SMT303](#) [PT65303L254](#) [P65THR106L254](#) [P25SMJ801](#) [PT65302V](#) [P25SMJ301](#) [P36THR103](#) [P25SMT803](#) [P65THR106](#)  
[P36THR102L254](#) [P65THR701](#) [PT65506L508](#) [PT65706](#) [PT65501L254](#) [P36THR101L254](#) [P65THR703L254](#) [P60ASMT106](#) [P60ATHR101V](#)  
[P36SMT801](#) [P36THR106](#) [P65THR703](#) [PT65502L508](#) [P25SMJ103](#) [P25SMT303](#) [P36SMT803](#) [P36SMT106](#) [DA-PT659.6/9.5](#) [P36SMT103](#)  
[S254](#) [P36SMT101](#) [P65SMT701](#) [P36THR101](#) [DA-PT659.6/19](#) [PT65501L508](#) [PT65 701 L 5,08](#) [S254L](#) [P60ASMT103](#) [P65THR101](#)  
[P65THR102](#)