



Data Sheet

SMT-0440-T-2-R

Though extremely small, the SMT-0440 series transducers are constructed almost exactly the same as electro-mechanical transducers three times their size.

The 4mm square by 2mm high **SMT-0440-T-2-R** top-firing electro-mechanical transducer features a minimum SPL of 70 dBA at 10cm with only 3V (0-peak) input at 4 kHz. Glue is externally applied to the housing seams to prevent ingress of potting material.

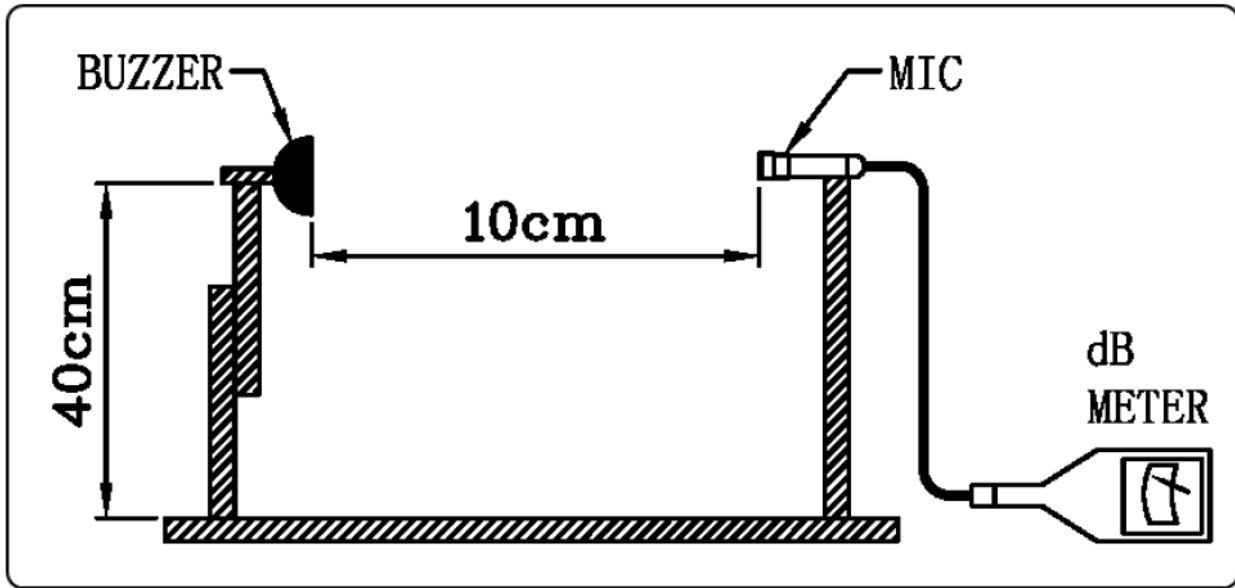
Features:

- Ultra-small design for wearable devices
- High output in a small, lightweight package
- Pick-and-place and reflow compatible
- Designed for use on potted PCBs

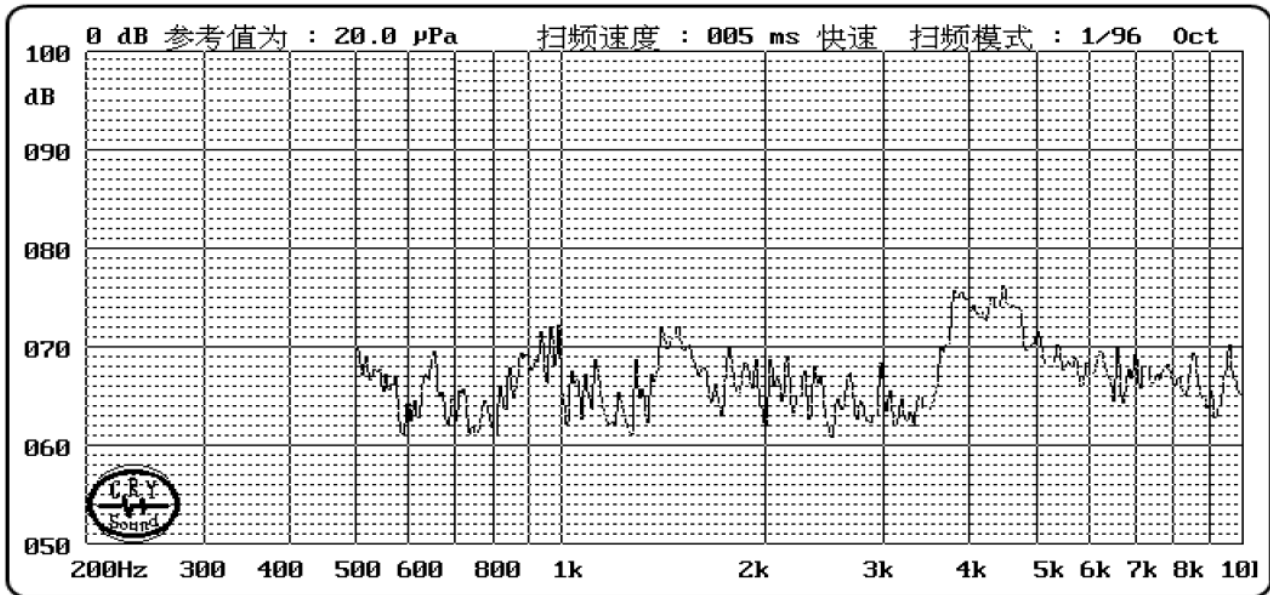
Specifications

Parameters	Values	Units
Rated Voltage	3	Volts 0-peak
Operating Voltage Range	2 ~ 4	Volts 0-peak
Impedance	17 ± 3	Ohms
Minimum SPL (Rated voltage @ 10cm)	70	dBA
Resonant Frequency	4,000 ±500	Hz
Max Current Draw (Rated voltage, 50% duty cycle, at resonant frequency)	90	mA
Housing Material	LCP	-
Terminal Material	Tin-plated Brass	-
Weight	0.1	Grams
Operating Temperature	-20 ~ +70	°C
Storage Temperature	-30 ~ +80	°C

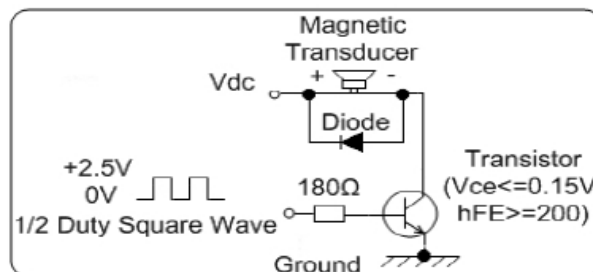
Measurement Method (3V0-p sine-sweep)



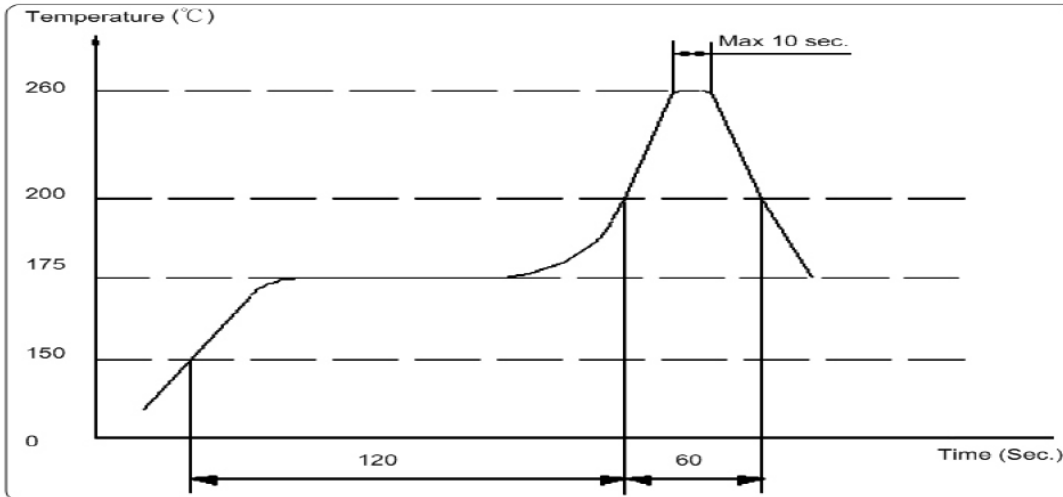
Frequency Response (measured with 3V0-p @ 10cm)



Recommended Drive Circuit



Recommended Reflow Profile

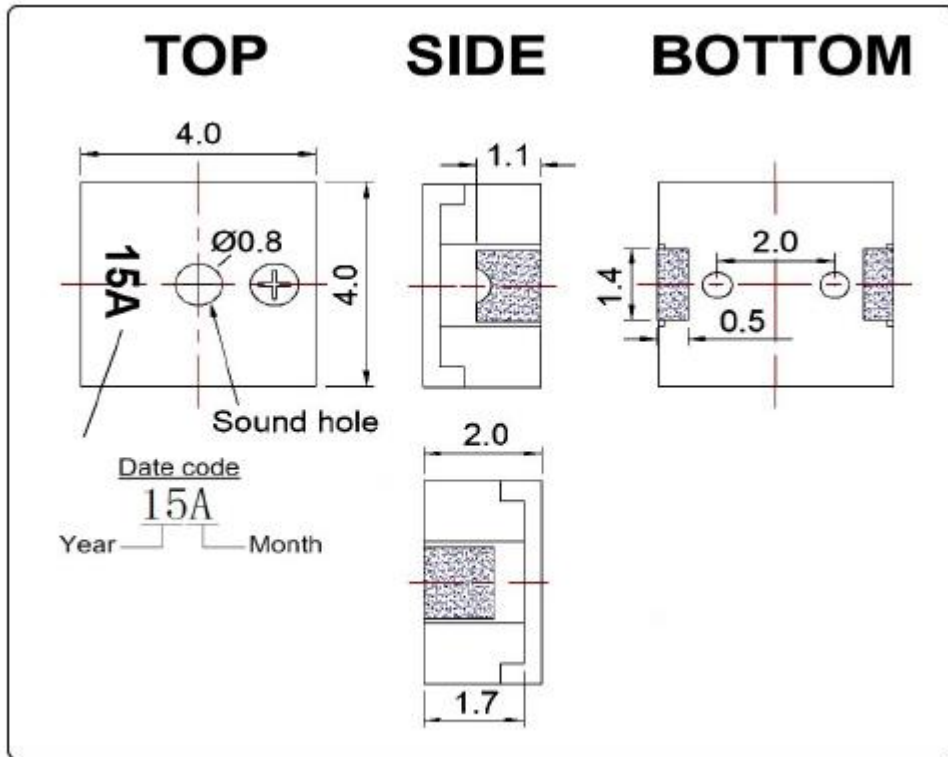


Reliability Testing

Type of Test	Test Specifications
High Temperature Test	96 hours at +70°C ± 2°C followed by two hours in normal room temperature
Low Temperature Test	96 hours at -20°C ± 2°C followed by two hours in normal room temperature
Humidity Test	25 ± 2 °C at 90-95% RH for 5 hr, then to 55 ± 2°C at 90-95% RH for 5hr, then to 25°C ± 2°C at 90-95% RH for 0.5hr, 10 cycles
Temperature Cycle Testing	<p>The part shall be subjected to 5 cycles using the following procedure followed by two hours at room temperature:</p> <p>(1 cycle) -20 °C (30 min) → +25 °C (30 min) → +70 °C (30 min) → +25 °C (15 min) → -20 °C (30 min)</p>
Vibration Test	10 to 50 to 10 Hz in three perpendicular directions for two hours each.
Drop Test	Drop transducer from a 70cm height onto a 10mm thick wooden board in three directions.

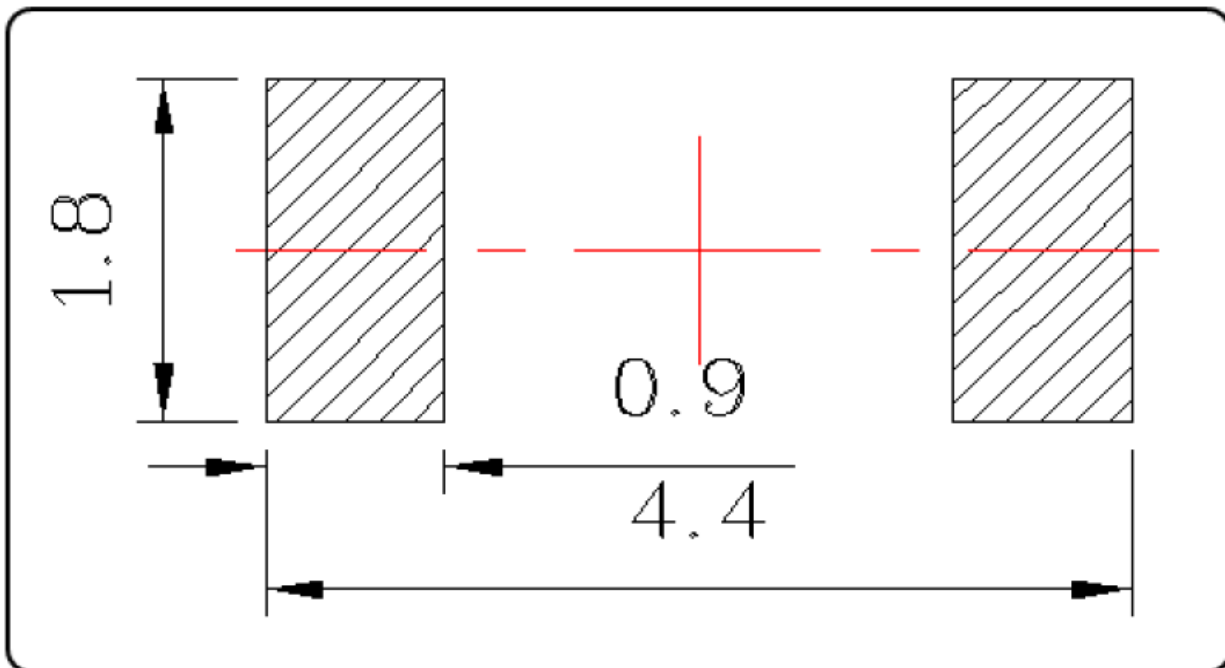
After each test, the part's SPL, frequency response, and current draw shall meet specifications.

Dimensions

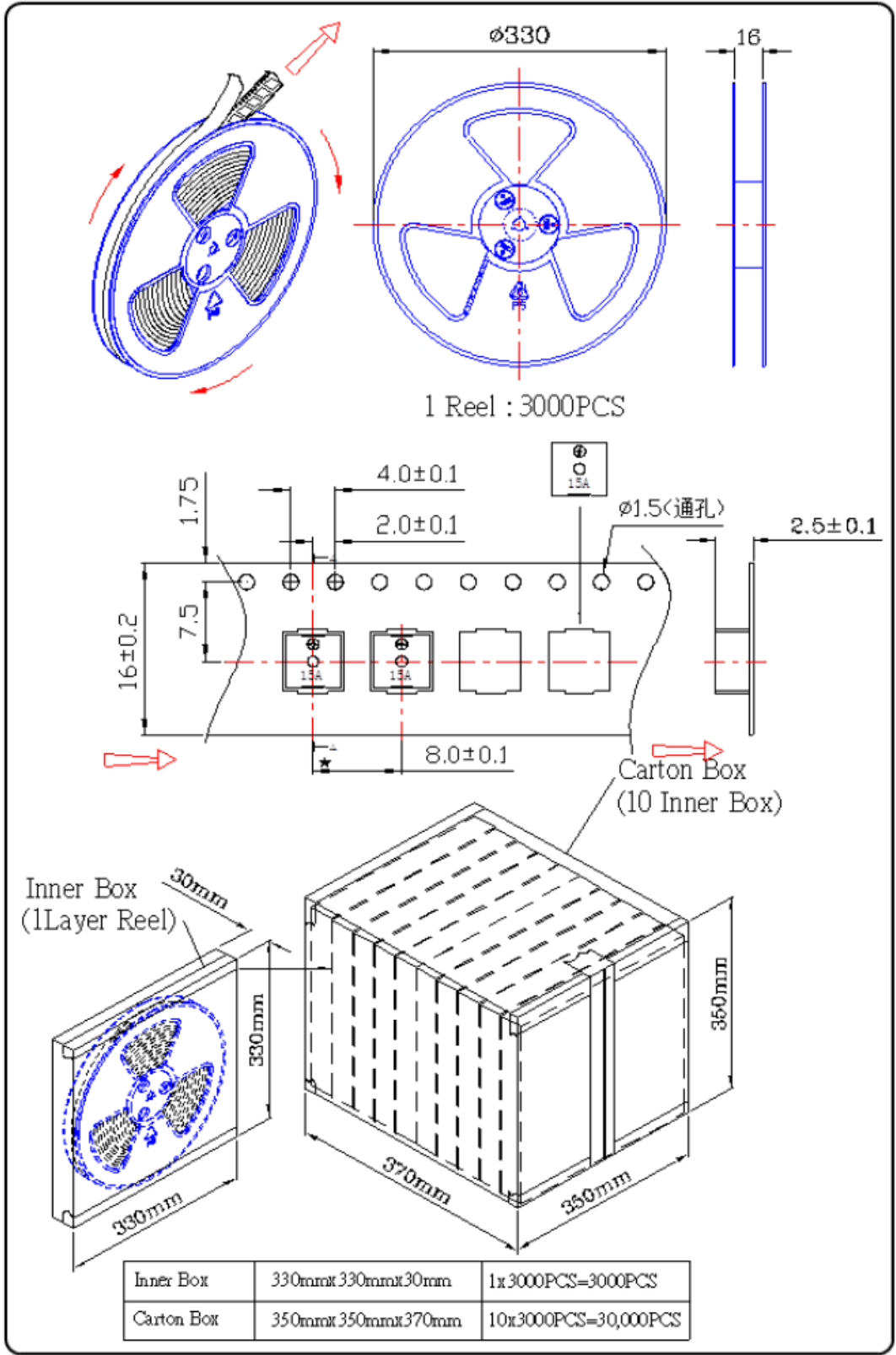


Tolerance: $\pm 0.5\text{mm}$ except specified

Recommended PCB Land Pattern



Packaging



Specifications Revisions

Revision	Description	Date
-	Released from Engineering	2/10/2017
A	Added Note 4 to add inspection of solder pads for glue.	2/28/2018

Notes:

1. Unless otherwise specified:
 - A. All dimensions are in millimeters.
 - B. Default tolerances are $\pm 0.5\text{mm}$ and angles are $\pm 3^\circ$.
2. Specifications subject to change or withdrawal without notice.
3. This part is RoHS 2011/65/EU Compliant.
4. Parts are inspected with UV light after external glue is applied to the housing to ensure no glue is present on the solder pads.

X-ON Electronics

Largest Supplier of Electrical and Electronic Components

Click to view similar products for [Speakers & Transducers](#) category:

Click to view products by [PUI Audio](#) manufacturer:

Other Similar products are found below :

[AS02016MR-2-R](#) [PB-1220PE](#) [PB-2015PQ](#) [900-00001](#) [SMT-2240-TW-2-R](#) [SWFK-31736-000](#) [PT-2065FW](#) [PT-4175W](#) [AT-2830-TW-LW35-R](#) [ED-30761-000](#) [ED-31305-163](#) [CI-30120-A42](#) [TWFK-23991-000](#) [PB-0927PQ](#) [BF-7083-000](#) [AB6505B](#) [BF-9778-000](#) [AS01708MR-SC-2-R](#) [AT-5030-TF-2-LW100-R](#) [AST-03008MR-R](#) [AS01308MR-2-R](#) [AS01808AO-WP-R](#) [AS01508MR-6-R](#) [AS07108PO-R](#) [AS07708PS-2-WR-R](#) [AS07104PO-R](#) [SMS2020-08H4.5 LF](#) [BDT1717-08H6.5W56MLF](#) [SMS-2008MS-R](#) [AS04008PS-4W-WR-R](#) [AS06608PS-WR-R](#) [BLS50-1-08H18.2B-03 LF](#) [AS07008PO-2-R](#) [AS03008MR-R](#) [AS01808AO-3-R](#) [AS04008CO-2-R](#) [AS04008PR-WR-R](#) [ASE03008MR-LW150-R](#) [AS01808MR-LW152-R](#) [AS01808MR-R](#) [AS03608MR-4-R](#) [AS06608PS-R](#) [AS07708PS-2-R](#) [ASE06008MR-LW150-R](#) [ASE02008MR-LW150-R](#) [AST-1732MR-R](#) [SMS-1508MS-2-R](#) [AS05708MR-R](#) [AS05008MR-R](#) [APS3008S-R](#)