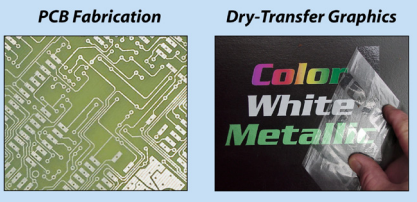


TONER TRANSFER PAPER

For PCB Fabrication & DecalPro kits

TONER TRANSFER PAPER

PCB Fabrication **Dry-Transfer Graphics**



Color White Metallic

Pulsar
PROFESSIONAL fx

Produced in the USA by Pulsar.
Package Contents: 10 sheets, 8-1/2" x 11".

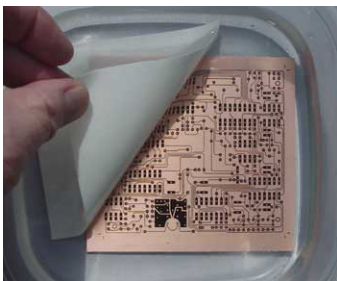
NOTE: This product is intended to be used with "toner" printing devices (laser printer or a photo-copier) and not intended for use in inkjet printers.

Website: PulsarProFX.com
4611 Crow Creek Drive, Colorado Springs, CO 80922-4615
PH: (850) 926-2009 (9-5pm EST) • FAX: (850) 926-8866

The "Toner Transfer Paper" (or TTP) is a replenishment item used with both the "PCB Fab-In-A-Box" kit for making circuit boards, and the "DecalPro" kit to create professional dry-transfer graphics for enclosures, faceplates... basically any surface, flat or curved.

Toner images print perfectly to the transfer paper because the printer sees this as regular soft paper (vs plastic sheet from other processes). On one side of the paper is a barrier coating (Dextrin) that prevents the toner from fusing into the fibers of the paper.

Printed Circuit Board Fabrication:



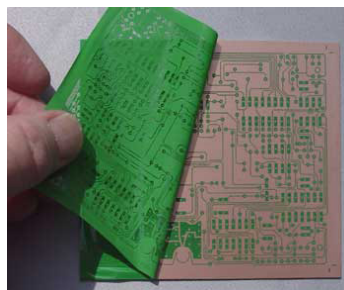
the Dextrin coating dissolves in 1 minute, releasing the image.

Rinse the board under tap water, dry and apply the sealing "GreenTRF" foil the same way as before to SEAL the toner image to prevent pitting from etchant getting through the granular toner image. This special foil goes hand-in-hand with the transfer paper. More info is available on our website at "PCBfx.com".



Dry-Transfer Graphics:

The DecalPro process is a stand-alone technique to create an image that is simply rubbed-down over the intended target location with no clear carrier around the image, unlike that of old-fashioned water-slide graphics. More info is available on our website at "DecalProFX.com".



ALL "PulsarProFX" PRODUCTS:

KITS:

- PCB "Fab-In-A-Box" [50-1003](#)
- PCB "Fab-In-A-Box" (MINI kit) [50-1006](#)
- Combo (PCB + DecalPro) [50-1004](#)
- DecalPRO (10min Graphics) [50-1001](#)

LAMINATOR:

- Applicator (12" 120 vac) [50-1301C](#)

SUPPLIES:

- PAPER: Toner Transfer Paper [50-1101](#)
- FOIL: GreenTRF (Etching) [50-1225](#)
- FOIL: WhiteTRF (Silkscreen) [50-1226](#)
- FOILS: "DecalPro" [50-1201](#) ~ [50-1299](#)
- CARRIER BOARD: "DecalPro" [50-1503](#)

COPPER CLAD: 8" x 10"

- 2pk Rigid .032" Single Sided [50-1501](#)
- 2pk Rigid .032" Double Sided [50-1502](#)
- 2pk Flex .005" Single Sided [50-1504](#)
- 2pk Flex .005" Double Sided [50-1505](#)

COPPER CLAD: 6" x 8"

- 4pk Rigid .032" Single Sided [50-1507](#)
- 4pk Rigid .032" Double Sided [50-1508](#)
- 4pk Sampler (Mixed)... [50-1506](#)
(.005" SS+DS and .032" SS+DS)

Regarding the recommended 'laminator':

Although the "direct-etch" (PCB) method for applying an etching mask to copper can be done reliably after doing a [simple calibration of a household iron](#), the suggested laminator does make it much easier and faster to use.

The DecalPro process on the other hand does REQUIRE the use of the laminator.

Pulsar
PROFESSIONAL fx

4611 Crow Creek Dr, Colorado Springs, CO 80922-4615

For more information about our techniques we invite you to visit our website at PulsarProFX.com or call us at (850) 926-2009, 9am-5pm MST

X-ON Electronics

Largest Supplier of Electrical and Electronic Components

Click to view similar products for [pulsar manufacturer](#):

Other Similar products are found below :

[50-1234](#) [50-1218](#) [50-1228](#) [50-1238](#) [50-1504](#) [50-1506](#) [50-1001](#) [50-1004](#) [50-1224](#) [50-1201](#) [50-1214](#) [50-1216](#) [50-1210](#) [50-1236](#) [50-1299](#) [50-1208](#) [50-1503](#) [50-1505](#) [DECALPRO KIT \(50-1001\)](#) [50-1220](#) [50-1212](#) [50-1226](#) [WHITETRF \(50-1226\)](#) [50-1225](#) [50-1230](#) [.032" SINGLE-SIDED \(50-1501\)](#) [50-1222](#) [50-1202](#) [50-1003](#) [GREENTRF \(50-1225\)](#) [50-1502](#) [50-1101](#) [50-1206](#) [50-1501](#) [TONER TRANFER PAPER \(50-1102\)](#)