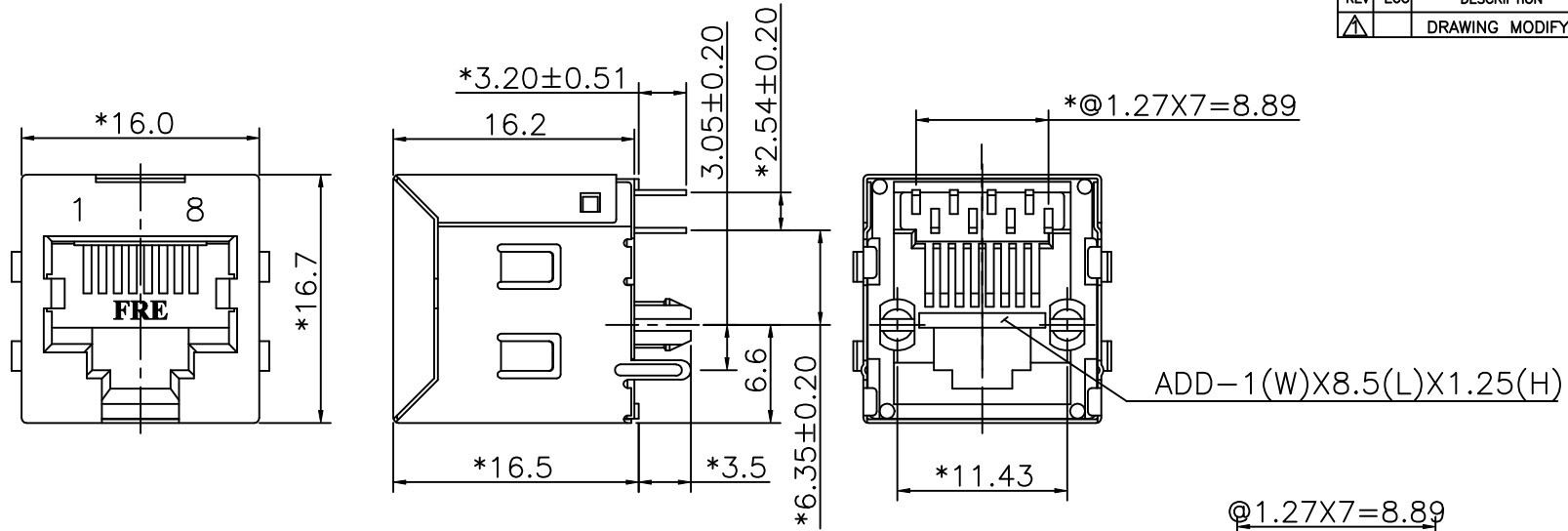


REVISION RECORD				
REV	ECO	DESCRIPTION	DRFT	CHKD
▲		DRAWING MODIFY	JAMIN 12/13/05	



NOTES:

ELECTRICAL:

1. VOLTAGE RATING : 125 VAC RMS.
2. CURRENT RATING : 1.5 AMP.
3. CONTACT RESISTANCE : 30 MILLIOHMS MAX.
4. INSULATION RESISTANCE: 1000 MEGOHMS MIN @ 500 VDC.
5. DIELECTRIC STRENGTH : 1000 VAC RMS 60Hz, 1MIN.

MECHANICAL:

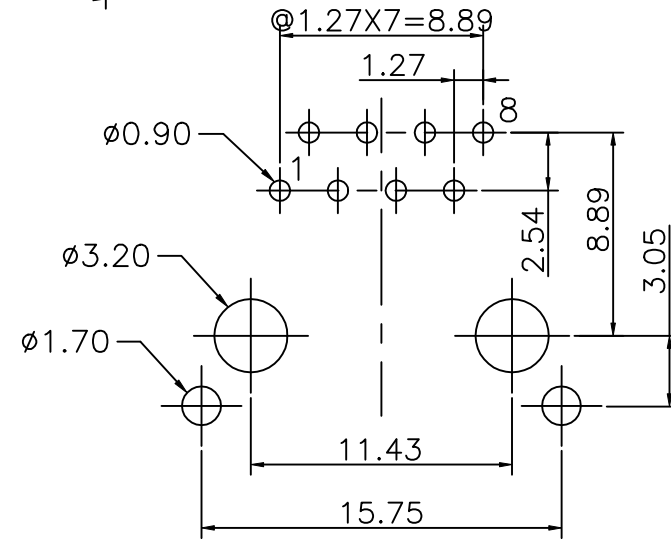
- ▲ 1. HOUSING MATERIAL : PBT UL94V-0.
2. CONTACT MATERIAL : PHOSPHOR BRONZE t=0.35mm.
3. PLATING : GOLD PLATING OVER NICKEL.
4. OPERATING LIFE : 750 CYCLES MIN.
5. PCB RETENTION PRE-SOLDER : 1 LB MIN.
6. PCB RETENTION POST-SOLDER: 10 LBS MIN.

ENVIRONMENTAL:

1. STORAGE : -40°C TO +85°C.
 - ▲ 2. OPERATION: 0°C TO 70°C.
 - ▲ 3. WAVE SOLDER TEMPERATURE: 230~250°C(5~10SECONDS).
- MATES WITH MODULAR PLUG CONFORMING TO
FCC PART 68, SUBPART F.
CUL FILE NO. E163191

▲ ROHS PART NUMBER: E5288-3X0X4X-L

- | | |
|---------------------------------|-------------------------|
| SHIELD PLATING: | GOLD PLATING: |
| 1- TIN PLATING,W/ SIDE TABS | 1- 3u" 2- 6u" |
| 2- NICKEL PLATING,W/ SIDE TABS | 3-15u" 4-30u" |
| S- TIN PLATING,W/O SIDE TABS | 5-50u" |
| T- NICKEL PLATING,W/O SIDE TABS | 0-PBT+15%G.F (BK) |
| | 1-PBT+30%G.F (BK) |
| | L-PBT+30%G.F (YELLOW) ▲ |



DETACHED LISTS	← MM (INCH) →		DFTO SAMMY	DATE 03/16/05	FULL RISE ELECTRONIC CO., LTD	
	TOLERANCES EXCEPT AS NOTED		CHKDANKUE	DATE 2005/12/14		
	MM	±	MFO	DATE	TITLE RJ45 TOP ENTRY PCB MODULAR JACK(DIP TYPE)	
	.0 ±0.20	±	APPV LUSHENG	DATE 2005/12/14		
	.00 ±0.15	±	MATERIAL :	DRAWING NO. GE523014-LC		SIZE A3
.000 ±0.075	±	ANGLES ±	/PART NO. SEE NOTE		REV 1	
THIRD ANGLE PROJECTION		FINISH :	DO NOT SCALE DRAWING		SHEET X	OF Y
		SCALE : 3:1				

X-ON Electronics

Largest Supplier of Electrical and Electronic Components

Click to view similar products for [Modular Connectors](#) / [Ethernet Connectors](#) category:

Click to view products by [Pulse manufacturer](#):

Other Similar products are found below :

[8949-H88/06BLKA/SN](#) [74441-0010/BKN](#) [PHP-6P6C-5](#) [GAX-3-66](#) [GAX-8-62](#) [GDCX-PN-66](#) [GLX-A-44](#) [GLX-N-1010M-BLK](#) [GMX-SMT4-N-88](#) [GSGX-N-2-88](#) [GSGX-N-4-88](#) [GSX-NS2-88-3.05](#) [GSX-NS-88-3.68](#) [PT-108A-8C-UL](#) [PTS-J531-8CS-50UL](#) [A-2014-0-4](#)
[GWLX-S9-88-YG](#) [DC-1021-8-WH-6](#) [1300530003](#) [1324640-4](#) [RJ11FTVC2G](#) [RJ11FTVC2N](#) [RJFTVX2SA1G](#) [132764-001](#) [1413235](#)
[MPS88RX-5000](#) [E5288-S000K3-L](#) [155302-001](#) [AX101050](#) [AX101063](#) [AX101065](#) [AX101072](#) [AX101307](#) [AX101315](#) [AX101318](#)
[AX102271](#) [AX102288](#) [AX102651](#) [AX102660](#) [J0012D21NL](#) [J0026D01ENL](#) [PC4D0018P](#) [8949-B88/6](#) [2-6609208-5](#) [937-SP-3088-2PC-A192](#)
[303066VFL](#) [303068V](#) [303088LFLSA](#) [303088SBL](#) [30-8603](#)