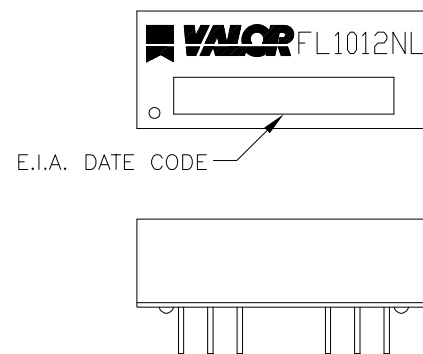


NOTES:

1. HEADER: THERMOPLASTIC WITH FLAMMABILITY RATING UL 94V-0 OR BETTER.
2. STORAGE TEMPERATURE: -20°C TO +125°C
3. COMPLIANCE TO J-STD:
  - A. J-STD-002: SOLDERABILITY AT 245°C REFLOW PROFILE
  - B. J-STD-020: LEVEL 1, NO MOISTURE SENSITIVE
  - C. J-STD-075: R7, 245°C MAXIMUM THROUGH REFLOW SOLDER
4. TO ORDER TAPE & REEL PACKAGING ADD A "T" SUFFIX TO THE PART NUMBER(i.e FL1012NL BECOMES FL1012NLT).



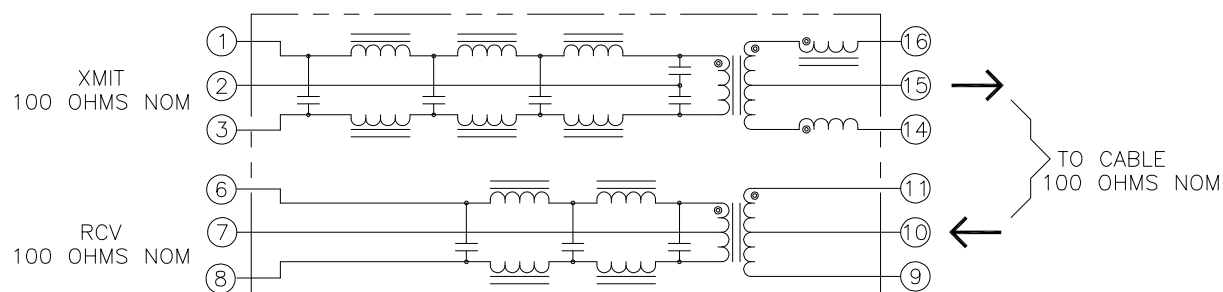
FINAL OUTLINE

© Copyright, 2016. Pulse Electronics Corp. All rights reserved. Pulse confidential & proprietary. (10/08/16)

| PRODUCT DESCRIPTION    | TLA DRAWING | PS DRAWING | SHEET  | PART NO. | DATASHEET REV. |
|------------------------|-------------|------------|--------|----------|----------------|
| MDL,SIN,10F,1:1,THT,TU | FL1012NL-14 | PS-XXXX    | 1 OF 3 | FL1012NL | A              |

ELECTRICAL CHARACTERISTICS AT +25°C UNLESS OTHER SPECIFIED

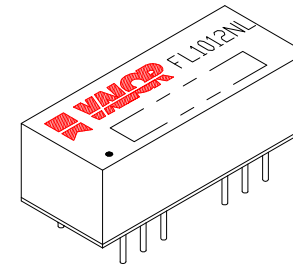
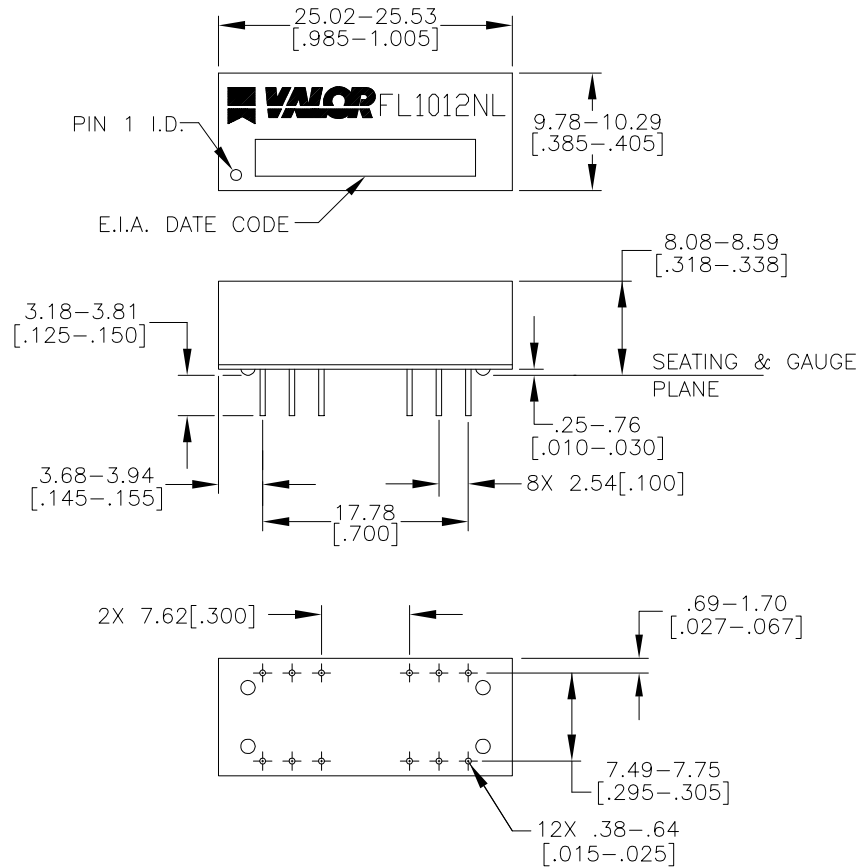
| PARAMETER                             | SPECIFICATIONS  |           |           |           |  |           |           |           |
|---------------------------------------|---|-----------|-----------|-----------|--|-----------|-----------|-----------|
| OPERATING TEMP                        | 0°C TO +70°C  |           |           |           |  |           |           |           |
| POLARITY                              | PER SCHEMATIC   |           |           |           |  |           |           |           |
| URNS RATIO                            | 1 : 1 ± 2%  |           |           |           |  |           |           |           |
| INSERTION LOSS<br>(1–10MHz)           | TX  |           |           |           | RX   |           |           |           |
|                                       | –1.0 dB MAXIMUM   |           |           |           | –0.8 dB MAXIMUM  |           |           |           |
| ATTENUATION                           | TX  |           |           |           | RX   |           |           |           |
|                                       | 20MHz   | 25MHz     | 30MHz     | 40MHz     | 20MHz  | 25MHz     | 30MHz     | 40MHz     |
|                                       | –7dB MIN  | –19dB MIN | –30dB MIN | –32dB MIN | –6dB MIN   | –14dB MIN | –20dB MIN | –31dB MIN |
| DCR                                   | TX  |           |           |           | RX   |           |           |           |
|                                       | .5 OHMS MAX (14–15)   |           |           |           | .5 OHMS MAX (9–10)<br>1.0 OHMS MAX (6–7)                   |           |           |           |
| COMMON MODE<br>REJECTION RATIO        | 30–100MHz   |           |           |           |  |           |           |           |
|                                       | –30 dB MIN  |           |           |           |  |           |           |           |
| RETURN LOSS<br>(Z OUT = 100 OHM ±15%) | 5–10MHz   |           |           |           |  |           |           |           |
|                                       | –17 dB MIN  |           |           |           |  |           |           |           |
| CROSS TALK                            | –30dB MIN (1–10MHz)   |           |           |           |  |           |           |           |
| INPUT – OUTPUT<br>ISOLATION           | TX  |           |           |           | RX   |           |           |           |
|                                       | 1500VRMS FOR 1 MINUTE<br>(PINS 1, 2 AND 3 TO 14, 15 AND 16) |           |           |           | 1500VRMS FOR 1 MINUTE<br>(PINS 6, 7 AND 8 TO 9, 10 AND 11) |           |           |           |



SCHEMATIC

© Copyright, 2016. Pulse Electronics Corp. All rights reserved. Pulse confidential & proprietary. (10/08/16)

| PRODUCT DESCRIPTION    | TLA DRAWING | PS DRAWING | SHEET  | PART NO. | DATASHEET REV. |
|------------------------|-------------|------------|--------|----------|----------------|
| MDL,SIN,10F,1:1,THT,TU | FL1012NL–14 | PS–XXXX    | 2 OF 3 | FL1012NL | A              |



DIMENSIONS ARE IN MILLIMETERS [INCHES] WITH THE FOLLOWING TOLERANCES: [INCHES] ARE FOR REFERENCE ONLY.  
X.XX= ±0.25 [±.010]

© Copyright, 2016. Pulse Electronics Corp. All rights reserved. Pulse confidential & proprietary. (10/08/16)

| PRODUCT DESCRIPTION    | TLA DRAWING | PS DRAWING | SHEET  | PART NO. | DATASHEET REV. |
|------------------------|-------------|------------|--------|----------|----------------|
| MDL,SIN,10F,1:1,THT,TU | FL1012NL-14 | PS-XXXX    | 3 OF 3 | FL1012NL | A              |

## X-ON Electronics

Largest Supplier of Electrical and Electronic Components

*Click to view similar products for [Audio Transformers](#) / [Signal Transformers](#) category:*

*Click to view products by [Pulse manufacturer](#):*

Other Similar products are found below :

[CX2041NLT](#) [MGPWT-00449-P](#) [PE-64961](#) [H1302FNLT](#) [H5008FNL](#) [H5012FNL](#) [H5020FNLT](#) [H5077NLT](#) [H5084FNLT](#)  
[B78476A9558A003](#) [1812WBT2-4](#) [1879479-1](#) [HX2260FNL](#) [HX5014FNL](#) [EX2024FNL](#) [FL1066](#) [T1137NLT](#) [T3012NL](#) [PE-65812FNL](#) [PE-65848FNLT](#) [H1174FNL](#) [H1302FNL](#) [H5015FNL](#) [H5019EFNL](#) [H5062FNLT](#) [CX2047LNL](#) [MGPWT-00059-P](#) [MGPWT-00266-P](#) [MGPWT-00278-P](#) [MGPWT-00431-P](#) [TTC-100](#) [TTC-143-H](#) [TTC-5032-1](#) [BX1194WNLT](#) [HX1234NLT](#) [HX5008FNLT](#) [HX5019FNL](#) [HX5084NL](#) [3-1879385-5](#) [TX1263NLT](#) [4-1879391-0](#) [T1142NL](#) [HX6101FNL](#) [HX5084FNL](#) [HX1148NL](#) [HX5020FNLT](#) [HX5014FNLT](#) [T1124NL](#)  
[1879732-1](#) [2-1879391-5](#)